

# ZP series

Subminiature pushbutton switches • metal bushing



## DISTINCTIVE FEATURES

Ø 4.83 mm threaded bushing

Solder lug and straight PC terminals



## ELECTRICAL SPECIFICATIONS

- Max. current/voltage rating with resistive load :
  - gold plated contacts : 0.4 VA 20 V max. AC or DC
  - silver plated contacts : 0.5 A 48V max. AC or DC
- Minimum load : 10 mA 50 mV - 10 µA 5 VDC
- Contact resistance : 50 mΩ max.
- Insulation resistance : 1,000 MΩ min. at 500 VDC
- Dielectric strength: 1,000 Vrms 50 Hz min. between terminals and frame / 500 Vrms 50 Hz min. between terminals
- Electrical life at full load :
  - gold plated contacts : 60,000 cycles
  - silver plated contacts: 20,000 cycles



## ENVIRONMENTAL SPECIFICATIONS

- Operating temperature : -30 °C to +85 °C (-22 °F to +185 °F)
- Moisture : 21 days 95 % (NFC 20-603 - IEC 68-2-3)



## GENERAL SPECIFICATIONS

- Travel :
  - function 2 (ON-MOM) : 1.2 mm (.047) ± 0.3 (.11)
  - function 3 (OFF-MOM) : 1 mm (.039) ± 0.3 (.11)
- Strength of terminals : pull-out force 10 N max.
- Torque : 1 Nm max. applied between the 2 nuts
- Max. panel thickness : 1.5 mm (.059) with 2 nuts



## SOLDERING

- Hand soldering : 280 °C (536 °F) max. for 5 seconds max.
- Wave soldering : 260 °C (500 °F) max. for 5 seconds max.

The company reserves the right to change specifications without notice.



# ZP series

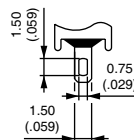
Subminiature pushbutton switches • metal bushing

## MATERIALS

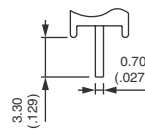
- Case : thermoplastic UL94-V0
- Actuator : thermoplastic UL94-V0
- Bushing : zamac, tin plated
- Contacts and terminals :
  - 0 : brass, gold plated (standard)
  - 1 : brass, silver plated
  - 3 : brass, gold plated (1.27 micron gold)
- Terminal seal : epoxy

APEM products may be recycled at end-of-life for the re-claiming of valuable metal components.

## TERMINALS

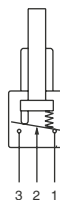


Solder lug

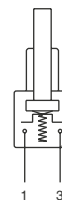


Straight PC

## ELECTRICAL FUNCTIONS



Function 2  
(ON - MOM)



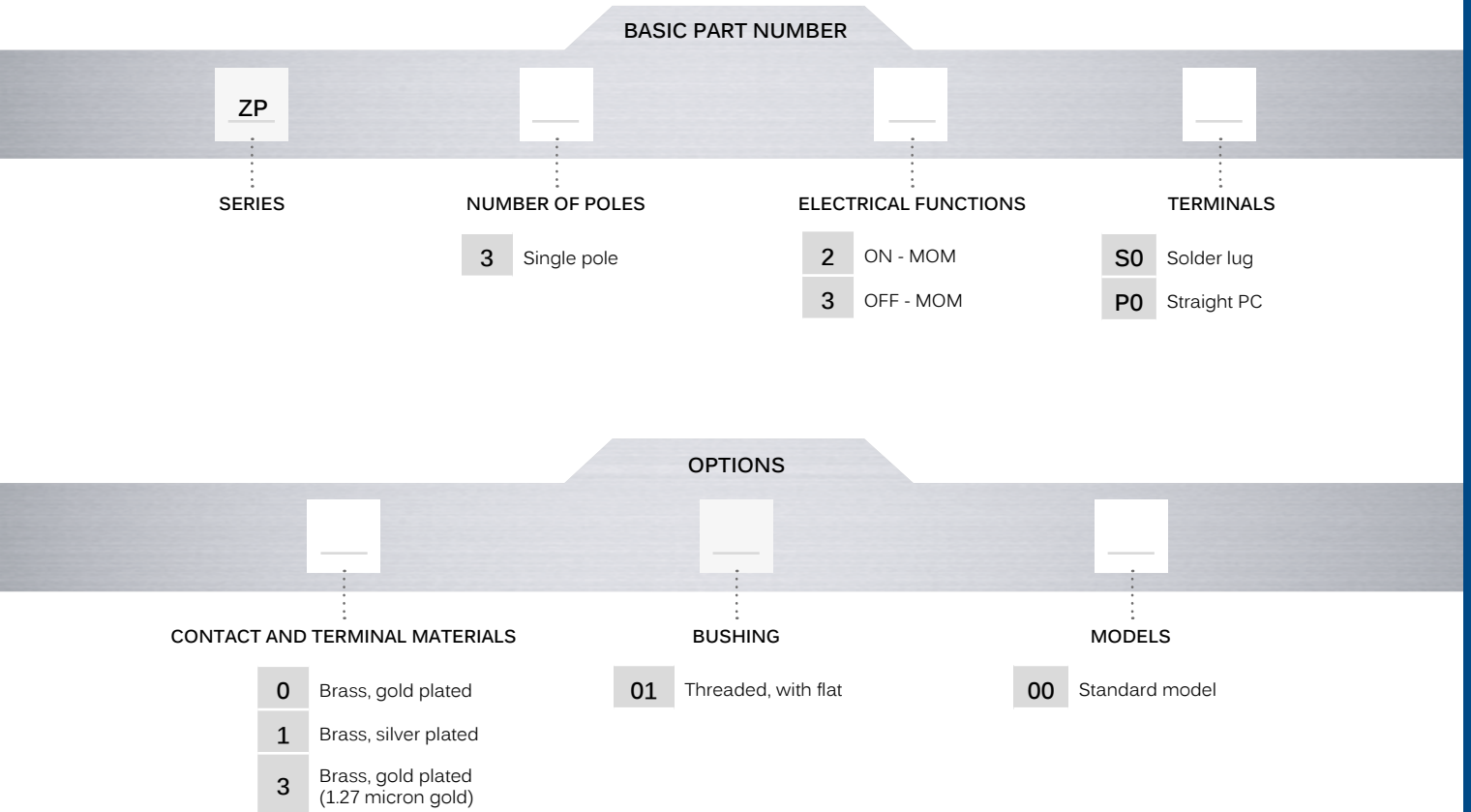
Function 3  
(OFF - MOM)

# ZP series

Subminiature pushbutton switches • metal bushing



## BUILD YOUR PART NUMBER



## ABOUT THIS SERIES

On the following pages, you will find successively basic part numbers of switches and options in the same order as in above chart

**Notice:** please note that not all combinations of above numbers are available. Refer to the following pages for further information.

**Mounting accessories:** Standard hardware supplied with all models : 2 hex nuts 7 mm (.275) across flats P/N U5731, 1 locking ring P/N U5831 and 1 lockwasher P/N U5841.

# ZP series

Subminiature pushbutton switches • metal bushing

## SOLDER LUG TERMINALS

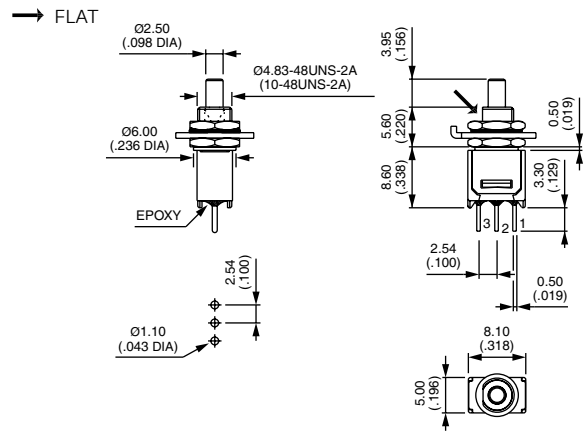
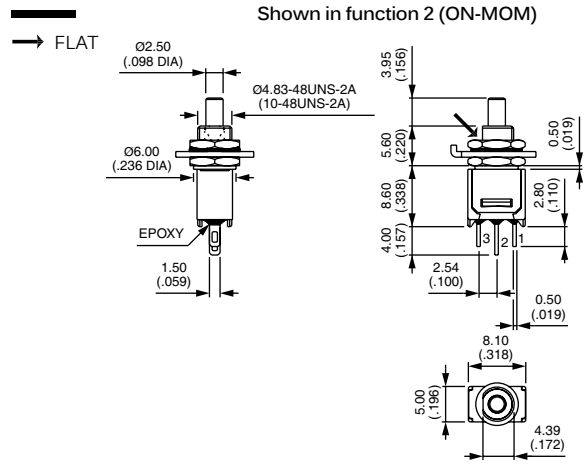


ZP32S0	ON	MOM
ZP33S0	OFF	MOM

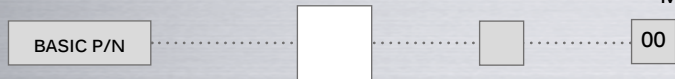
## SOLDER LUG TERMINALS



ZP32P0	ON	MOM
ZP33P0	OFF	MOM



### CONTACT & TERMINAL MATERIALS

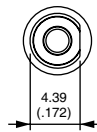


- 0 Brass, gold plated (standard)
- 1 Brass, silver plated
- 3 Brass, gold plated (1.27 micron gold)

### BUSHING



- 01 Threaded, with flat



## X-ON Electronics

Largest Supplier of Electrical and Electronic Components

*Click to view similar products for [Pushbutton Switches](#) category:*

*Click to view products by [Apem](#) manufacturer:*

Other Similar products are found below :

[8940K2012](#) [LW1L-M1C10V-A](#) [LW1L-M1C70-A](#) [LW2L-A1C20M-GD](#) [LW2L-M1C20M-A](#) [60324L](#) [M22-D-R-GB0/K11](#) [M7E-HRN2](#)  
[67021K512](#) [67081K512X](#) [701PB580](#) [7190K101](#) [7199K101](#) [810K12910](#) [810KSV30B](#) [MML21EA2ADK](#) [MML21KA3ABK](#)  
[MML23KA3AC05K-001](#) [MML23KW3AA01W](#) [8418K2](#) [8442K3](#) [8450K1](#) [860K11911T01A](#) [861901](#) [861K11911T01A07](#)  
[861K13810T00A14](#) [861K13911](#) [8646AB6X718UL](#) [8646ABUL](#) [9001KXRK](#) [907AYY100](#) [PMHD155A1](#) [95-313.000](#)  
[9533CD4+U574+U4922](#) [95-414.000](#) [99-450.837](#) [99-453.837](#) [PV3H2B0NN-341](#) [1203MRA](#) [A22NZBGANGA](#) [A22NZBMMNGA](#)  
[A22NZBNANGA](#) [A22NZMPATRA](#) [A2PMA1X03EC56](#) [A3A-5123-02](#) [A3A-7140](#) [A3A-7310](#) [A3A-7340](#) [A3U-TMW-A2C-5M](#) [A595](#)