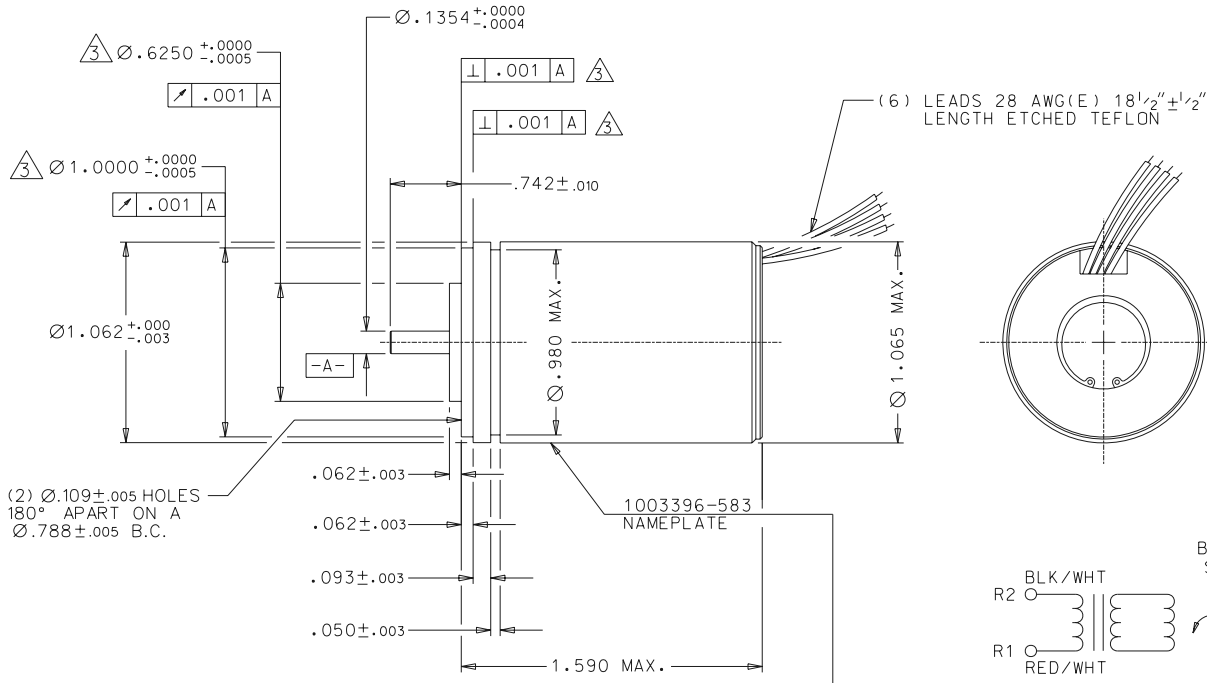


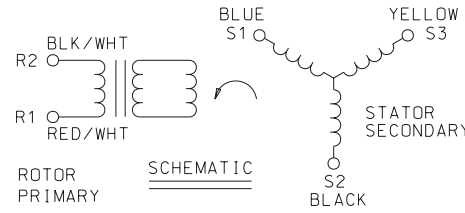
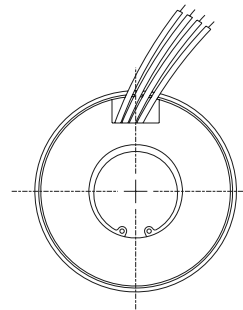
NOTES:

- ① SHAFT END PLAY MEASURED WITH AN 8 OZ. REVERSE GAGE LOAD.
- ② RADIAL PLAY MEASURED WITH A 4 OZ. REVERSE GAGE LOAD.
- ③ MEASURED IN A VERTICAL POSITION.



(2) Ø.109±.005 HOLES
180° APART ON A
Ø.788±.005 B.C.

HAROSYN-TX 11BTX-300-B100D
ROTOR(IN)26V STATOR(OUT)11.8V 400HZ
PATENTED



PHASING EQUATION
FOR CCW ROTATION OF SHAFT
FACING SHAFT END.
 $E(S1-S3)=KE(R2-R1) \sin \theta$
 $E(S3-S2)=KE(R2-R1)(\sin \theta + 120^\circ)$
 $E(S2-S1)=KE(R2-R1)(\sin \theta + 240^\circ)$

FILENAME: 11BTX-300-B100D.DGN

TYPICAL MECHANICAL DATA		
TEMPERATURE RANGE	°C	-55 to +105
SHAFT END PLAY		.005 TO .007
SHAFT RADIAL PLAY		.002 MAX.
SHAFT RUNOUT	F.I.R.	.002 MAX.
WEIGHT	GRAMS AVG.	116
TORQUE GRADIENT	MG-MM/DEG	1400 MIN.

TYPICAL ELECTRICAL DATA		
INPUT VOLTAGE	@400HZ VOLTS	26
INPUT CURRENT	MAX. MA	250
INPUT POWER	NOM. WATTS	3.5
IMPEDANCE ZSO	OHMS	15.6 +J 28
IMPEDANCE ZSS	OHMS	16 +J 10
IMPEDANCE ZRO	OHMS	70 +J 95
IMPEDANCE ZRS	OHMS	64 +J 31
TRANSFORMATION RATIO	±5%	.384
D.C. ROTOR RESISTANCE	±15% OHMS	18.5
D.C. STATOR RESISTANCE	±15% OHMS	8.5
ERROR FROM EZ	MAX. MINUTES	±30
PHASE SHIFT (OPEN CIRCUIT)		+19° REF.
NULL VOLTAGE (TOTAL) RMS	MV	40 MAX.
HIPOT TO CASE	60 HZ VRMS	500

THIS DRAWING HAS BEEN
CREATED BY CAD/CAM. DO NOT
MANUALLY REVISE OR UPDATE.

Tolerancing Complies
With ANSI/ASME
Y14.5M-1986

CHG.	REVISIONS	DATE	APPR.	CHG.	REVISIONS	DATE	APPR.	CHG.	REVISIONS	DATE	APPR.
								F	ECO#D7735	10/23/06	DRW
								E	ECO#15942	4/99	RKT
								D	ECO#13570	10/90	RKT
								C	ECO#13403	10/90	RKT
								B	LEADS WERE TYPE C (IRR)	10/90	DEH
								A	NEW DWG.	10/90	DEH

TOLERANCES
UNLESS SPECIFIED
DECIMAL .XXX ±.005
DECIMAL .XX ±.010
DECIMAL .X ±.030
FRACTION ±1/64
ANGLES ±0°30'

DRAWN
D. HERRINGTON

CHECKED
DST 10/91

ENGR
RKT 10/91

APPROV
DEH 11/91

CODE IDENT NO.
58655

DANAHER INDUSTRIAL CONTROLS

PROPRIETARY RIGHTS OF HARDWARE ARE INCLUDED IN THE INFORMATION DISCLOSED HEREIN. DO NOT DUPLICATE OR DISCLOSE TO THIRD PARTIES WITHOUT WRITTEN PERMISSION OF HARDWARE.

OUTLINE & PERFORMANCE SPECIFICATIONS

SYNCHRO TRANSMITTER (BRUSHLESS)

DWG. NO. 11BTX-300-B100D F

X-ON Electronics

Largest Supplier of Electrical and Electronic Components

Click to view similar products for [Encoders, Decoders, Multiplexers & Demultiplexers](#) *category:*

Click to view products by [API Delevan](#) *manufacturer:*

Other Similar products are found below :

[MC74HC163ADTG](#) [74HC253N](#) [NLV74VHC1G01DFT1G](#) [TC74AC138P\(F\)](#) [NLV14051BDR2G](#) [NLV74HC238ADTR2G](#) [COMX-CAR-210](#)
[5962-8607001EA](#) [NTE74LS247](#) [5962-8756601EA](#) [SN74LS148N](#) [8CA3052APGGI8](#) [TC74VHC138F\(EL,K,F\)](#) [PI3B3251LE](#) [PI3B3251QE](#)
[NTE4028B](#) [NTE4514B](#) [NTE4515B](#) [NTE4543B](#) [NTE4547B](#) [NTE74LS249](#) [NLV74HC4851AMNTWG](#) [MC74LVX257DG](#)
[M74HCT4851ADWR2G](#) [AP4373AW5-7-01](#) [NL7SZ19DBVT1G](#) [MC74LVX257DTR2G](#) [74VHC4066AFT\(BJ\)](#) [74VHCT138AFT\(BJ\)](#)
[74HC158D.652](#) [74HC4052D\(BJ\)](#) [74VHC138MTC](#) [COMX-CAR-P1](#) [JM38510/65852BEA](#) [74VHC138MTCX](#) [74HC138D\(BJ\)](#)
[NL7SZ19DFT2G](#) [74AHCT138T16-13](#) [74LCX138FT\(AJ\)](#) [74LCX157FT\(AJ\)](#) [NL7SZ18MUR2G](#) [PCA9540BD,118](#) [QS3VH16233PAG8](#)
[SNJ54HC251J](#) [SN54LS139AJ](#) [SN74CBTLV3257PWG4](#) [SN74ALS156DR](#) [SN74AHCT139PWR](#) [74HC251D.652](#) [74HC257D.652](#)