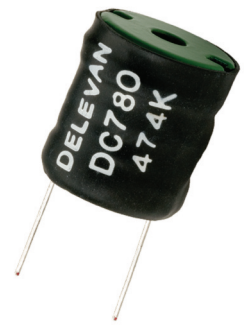


**SERIES**

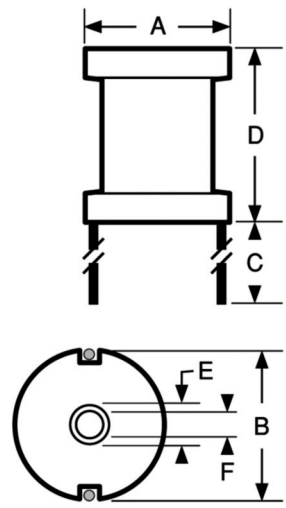
**DC780R**  
**DC780**



**High Current Power Line Chokes**



Actual Size



**Physical Parameters**

	Inches	Millimeters
A	0.775 ± 0.025	19.6 ± 0.6
B (C/L to C/L)	See Characteristics table	
C	0.750 Min.	19.05 Min.
D	0.815 ± 0.015	20.7 ± 0.4
E (Ref. only)	0.195 Max.	4.95 Max.
F	Clearance Hole for 4/40 Screw	

Leads Tinned to within 1/16" of Body

**Inductance** Measured @ 1 KHz with 0 Amps dc

**Mechanical Configuration** Center hole allows for mechanical mounting; insulated bobbins.

**Operating Temperature**

-55°C to +125°C;  
-55°C to +80°C @ full rated current

**Current Rating at 80°C Ambient** 45°C Rise

**Incremental Current** Minimum current which causes a 5% max. change in Inductance

**Power Dissipation at 80°C** 1.400 Watts Max.

**Dielectric Withstanding Voltage** 1000 V RMS Min.

**Marking** DELEVAN; DC780; dash number with tolerance letter. Note: An R after DC780 indicates a RoHS component.

Example: DC780R-103K  
DELEVAN  
DC780R  
103K

**Packaging** Bulk only

DASH NUMBER*	INDUCTANCE (µH)	NOMINAL TOLERANCE	DC RESISTANCE MAXIMUM (OHMS) @ 25°C	CURRENT RATING MAXIMUM (A DC)	INCREMENTAL CURRENT (A DC)	(Inches, Reference)	DIMENSION B (Inches, Reference)	LEAD DIAMETER (Inches, Reference)
--------------	-----------------	-------------------	-------------------------------------	-------------------------------	----------------------------	---------------------	---------------------------------	-----------------------------------

SERIES DC780								
-102L	1.0	± 15%	0.003	11.4	110.0	0.620	0.051	
-122L	1.2	± 15%	0.003	11.4	108.0	0.620	0.051	
-152L	1.5	± 15%	0.003	11.4	89.0	0.620	0.051	
-182L	1.8	± 15%	0.003	11.4	81.0	0.620	0.051	
-222L	2.2	± 15%	0.004	11.4	73.0	0.620	0.051	
-272L	2.7	± 15%	0.005	11.4	66.0	0.620	0.051	
-332L	3.3	± 15%	0.005	11.4	60.0	0.620	0.051	
-392L	3.9	± 15%	0.005	11.4	55.0	0.620	0.051	
-472L	4.7	± 15%	0.005	11.4	50.0	0.620	0.051	
-562L	5.6	± 15%	0.006	11.4	46.0	0.620	0.051	
-682L	6.8	± 15%	0.007	11.4	42.0	0.620	0.051	
-822L	8.2	± 15%	0.007	11.4	38.0	0.620	0.051	
-103K	10.0	± 10%	0.009	11.4	34.5	0.620	0.051	
-123K	12.0	± 10%	0.009	11.4	31.5	0.620	0.051	
-153K	15.0	± 10%	0.013	9.0	28.2	0.625	0.045	
-183K	18.0	± 10%	0.018	7.2	25.7	0.630	0.045	
-223K	22.0	± 10%	0.019	7.2	23.3	0.630	0.045	
-273K	27.0	± 10%	0.026	5.5	21.0	0.546	0.040	
-333K	33.0	± 10%	0.029	5.5	19.0	0.546	0.036	
-393K	39.0	± 10%	0.030	5.5	17.5	0.594	0.036	
-473K	47.0	± 10%	0.035	5.5	15.9	0.625	0.036	
-563K	56.0	± 10%	0.039	5.5	14.6	0.625	0.036	
-683K	68.0	± 10%	0.053	4.8	13.2	0.656	0.036	
-823K	82.0	± 10%	0.060	4.8	12.1	0.656	0.036	
-104K	100	± 10%	0.080	4.0	10.9	0.593	0.036	
-124K	120	± 10%	0.090	4.0	10.0	0.593	0.036	
-154K	150	± 10%	0.098	4.0	8.9	0.593	0.032	
-184K	180	± 10%	0.110	4.0	8.1	0.593	0.032	
-224K	220	± 10%	0.150	2.8	7.4	0.593	0.029	
-274K	270	± 10%	0.213	2.0	6.6	0.562	0.025	
-334K	330	± 10%	0.305	1.6	6.0	0.590	0.025	
-394K	390	± 10%	0.320	1.6	5.5	0.590	0.025	
-474K	470	± 10%	0.355	1.6	5.0	0.590	0.025	
-564K	560	± 10%	0.388	1.6	4.6	0.590	0.023	
-684K	680	± 10%	0.430	1.6	4.2	0.590	0.023	
-824K	820	± 10%	0.590	1.3	3.8	0.590	0.023	
-105K	1,000	± 10%	0.818	1.0	3.5	0.590	0.020	
-125K	1,200	± 10%	1.140	0.8	3.2	0.590	0.018	
-155K	1,500	± 10%	1.260	0.8	2.8	0.590	0.018	
-185K	1,800	± 10%	1.390	0.8	2.6	0.590	0.018	
-225K	2,200	± 10%	1.540	0.8	2.3	0.590	0.018	

\*Complete part # must include series # PLUS the dash #

## X-ON Electronics

Largest Supplier of Electrical and Electronic Components

*Click to view similar products for [Fixed Inductors](#) category:*

*Click to view products by [API Delevan](#) manufacturer:*

Other Similar products are found below :

[CR32NP-100KC](#) [CR43NP-680KC](#) [CR54NP-820KC](#) [CR54NP-8R5MC](#) [CTX32CT-100](#) [70F224AI](#) [MGDQ4-00004-P](#) [MHL1ECTTP18NJ](#)  
[MHL1JCTTD12NJ](#) [PE-51506NL](#) [PE-53601NL](#) [PE-53602NL](#) [PE-53630NL](#) [PE-53824SNLT](#) [PE-62892NL](#) [PE-92100NL](#) [PG0434.801NLT](#)  
[PG0936.113NLT](#) [9310-16](#) [PM06-2N7](#) [PM06-39NJ](#) [A01TK](#) [1206CS-471XJ](#) [HC2-2R2TR](#) [HC2LP-R47-R](#) [HC3-2R2-R](#) [HCF1305-3R3-R](#)  
[1206CS-151XG](#) [RCH664NP-140L](#) [RCH664NP-4R7M](#) [RCH8011NP-221L](#) [RCP1317NP-332L](#) [RCP1317NP-391L](#) [RCR1010NP-470M](#)  
[RCR110DNP-331L](#) [DH2280-4R7M](#) [DS1608C-106](#) [ASPI-4020HI-R10M-T](#) [B10TJ](#) [B82477P4333M](#) [B82498B3101J000](#) [B82498B3680J000](#)  
[ELJ-RE27NJF2](#) [1812CS-153XJ](#) [1812CS-183XJ](#) [1812CS-223XJ](#) [1812LS-104XJ](#) [1812LS-105XJ](#) [1812LS-124XJ](#) [1812LS-154XJ](#)