

SERIES

SP1210R
SP1210



Shielded Surface Mount Power Inductors

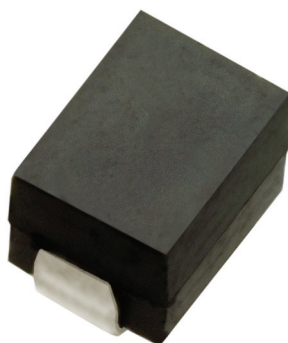
DASH NUMBER*

INDUCTANCE (μH)
±10% @100 kHz

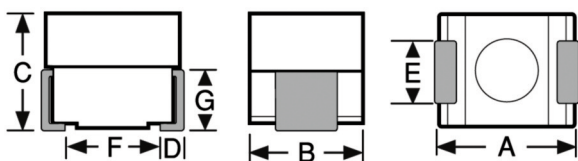
DC RESISTANCE
MAXIMUM (OHMS)

CURRENT RATING
MAXIMUM (mA DC)

INCREMENTAL
CURRENT (mA DC)



Actual Size



Physical Parameters

| | Inches | Millimeters |
|---|-------------------|------------------|
| A | 0.118 to 0.138 | 3.00 to 3.51 |
| B | 0.085 to 0.105 | 2.16 to 2.66 |
| C | 0.081 to 0.101 | 2.06 to 2.57 |
| D | 0.016 Min. | 0.41 Min. |
| E | 0.041 to 0.061 | 1.04 to 1.55 |
| F | 0.070 (Ref. Only) | 1.78 (Ref. Only) |
| G | 0.054 (Ref. Only) | 1.37 (Ref. Only) |

Dimensions "A" and "C" are over terminals.

Operating Temperature Range -55°C to +125°C

Current Rating at 90°C Ambient 35°C Rise

Maximum Power Dissipation at 90°C 0.287 W

Inductance Measured at 1V with no DC current

Incremental Current The current at which the inductance will be decreased by a maximum of 5% from its initial DC value

Marking Delevan, dash number followed by an SP, date code/lot (YYWWL). Note: An R before the date code/lot symbol indicates a RoHS component.

Example: SP1210R-102J

DELEVAN
102 SP
R1742A

Packaging Tape & reel (12mm): 7" reel, 650 pieces max.; 13" reel, 2500 pieces max.

Coupling 5% Typical (Ref. M83446, 1mm spacing)

Made In the U.S.A.

| SERIES SP1210 FERRITE CORE | | | | |
|----------------------------|-------|-------|------|------|
| -471K | 0.470 | 0.100 | 1440 | 1870 |
| -561K | 0.560 | 0.109 | 1380 | 1720 |
| -681K | 0.680 | 0.119 | 1320 | 1580 |
| -821K | 0.820 | 0.133 | 1250 | 1420 |
| -102K | 1.00 | 0.147 | 1190 | 1290 |
| -122K | 1.20 | 0.160 | 1140 | 1180 |
| -152K | 1.5 | 0.175 | 1080 | 1060 |
| -182K | 1.80 | 0.195 | 1030 | 965 |
| -222K | 2.20 | 0.211 | 992 | 892 |
| -272K | 2.70 | 0.305 | 826 | 784 |
| -332K | 3.30 | 0.440 | 692 | 718 |
| -392K | 3.90 | 0.470 | 665 | 665 |
| -472K | 4.70 | 0.520 | 633 | 601 |
| -562K | 5.60 | 0.570 | 606 | 550 |
| -682K | 6.80 | 0.630 | 576 | 497 |
| -822K | 8.20 | 0.880 | 487 | 454 |
| -103K | 10.0 | 0.960 | 464 | 410 |
| -123K | 12.0 | 1.3 | 400 | 375 |
| -153K | 15.0 | 1.8 | 338 | 336 |
| -183K | 18.0 | 2.0 | 322 | 304 |
| -223K | 22.0 | 2.2 | 306 | 275 |
| -273K | 27.0 | 2.5 | 291 | 249 |
| -333K | 33.0 | 3.5 | 243 | 225 |
| -393K | 39.0 | 4.6 | 212 | 207 |
| -473K | 47.0 | 5.0 | 203 | 189 |
| -563K | 56.0 | 5.5 | 194 | 174 |
| -683K | 68.0 | 6.1 | 185 | 157 |
| -823K | 82.0 | 7.9 | 162 | 143 |
| -104K | 100 | 8.7 | 154 | 129 |
| -124K | 120 | 9.6 | 147 | 118 |
| -154K | 150 | 13.5 | 124 | 106 |
| -184K | 180 | 14.7 | 119 | 96 |
| -224K | 220 | 20.7 | 100 | 87 |
| -274K | 270 | 23.0 | 95 | 79 |
| -334K | 330 | 26.8 | 88 | 71 |
| -394K | 390 | 32.4 | 80 | 65 |

Optional Tolerances: J = 5% H = 3% G = 2%

*Complete part # must include series # PLUS the dash #

X-ON Electronics

Largest Supplier of Electrical and Electronic Components

Click to view similar products for [Fixed Inductors](#) category:

Click to view products by [API Delevan](#) manufacturer:

Other Similar products are found below :

[CR43NP-680KC](#) [CR54NP-820KC](#) [CR54NP-8R5MC](#) [CTX32CT-100](#) [70F224AI](#) [MGDQ4-00004-P](#) [MHL1ECTTP18NJ](#) [MHL1JCTTD12NJ](#)
[PE-51506NL](#) [PE-53601NL](#) [PE-53630NL](#) [PE-53824SNLT](#) [PE-62892NL](#) [PE-92100NL](#) [PG0434.801NLT](#) [PG0936.113NLT](#) [9310-16](#) [PM06-2N7](#) [PM06-39NJ](#) [A01TK](#) [1206CS-471XJ](#) [HC2-2R2TR](#) [HC2LP-R47-R](#) [HC3-2R2-R](#) [HCF1305-3R3-R](#) [1206CS-151XG](#) [RCH664NP-140L](#)
[RCH664NP-4R7M](#) [RCH8011NP-221L](#) [RCP1317NP-332L](#) [RCP1317NP-391L](#) [RCR1010NP-470M](#) [RCR110DNP-331L](#) [DH2280-4R7M](#)
[DS1608C-106](#) [ASPI-4020HI-R10M-T](#) [B10TJ](#) [B82477P4333M](#) [B82498B3101J000](#) [B82498B3680J000](#) [ELJ-RE27NJF2](#) [1812CS-153XJ](#)
[1812CS-183XJ](#) [1812CS-223XJ](#) [1812LS-104XJ](#) [1812LS-105XJ](#) [1812LS-124XJ](#) [1812LS-154XJ](#) [1812LS-223XJ](#) [1812LS-224XJ](#)