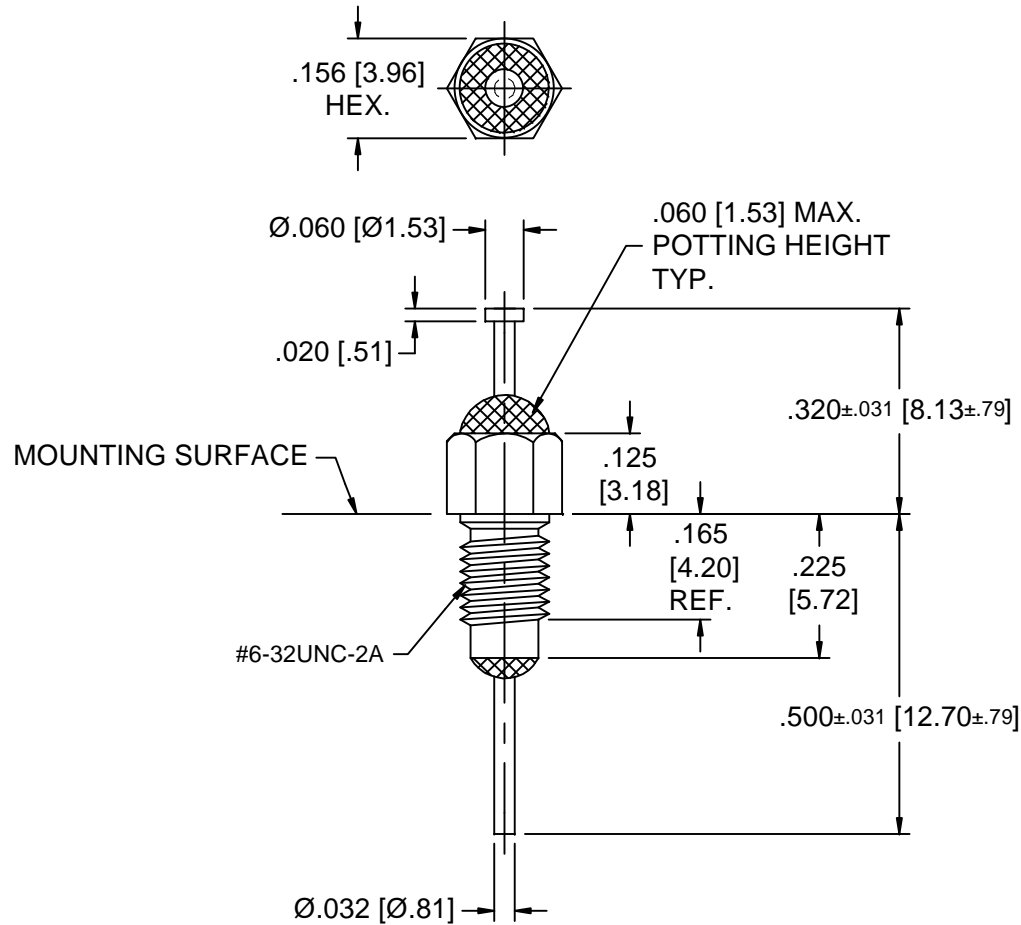


NOTES:

1. SUGGESTED MOUNTING HOLE  $\varnothing$ .147 [3.73]
2. HARDWARE IS INCLUDED
3. MAXIMUM MOUNTING TORQUE: 3 IN-LBS
4. THIS IS A LEAD FREE PRODUCT
5. MAXIMUM REFLOW IS 245°C FOR 5 SECONDS

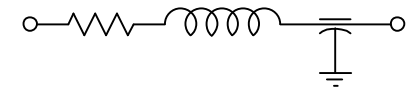


BUSHING FINISH	SILVER
LEAD FINISH	SILVER
CAPACITANCE	22 nF GMV
TEMP. RANGE	-55°C TO +125°C
CURRENT	10 AMPS MAX.
WORKING VOLTAGE	125°C, 100 VDC MAX.
DC RESISTANCE	.01 OHMS MAX.

I.L. PER MIL-STD-220 @ 25°C (NO LOAD)

FREQ. MHz	I.L. (dB)
1 MHz	7
10 MHz	27
30 MHz	34
100 MHz	43
300 MHz	50
1 GHz	60

SCHEMATIC

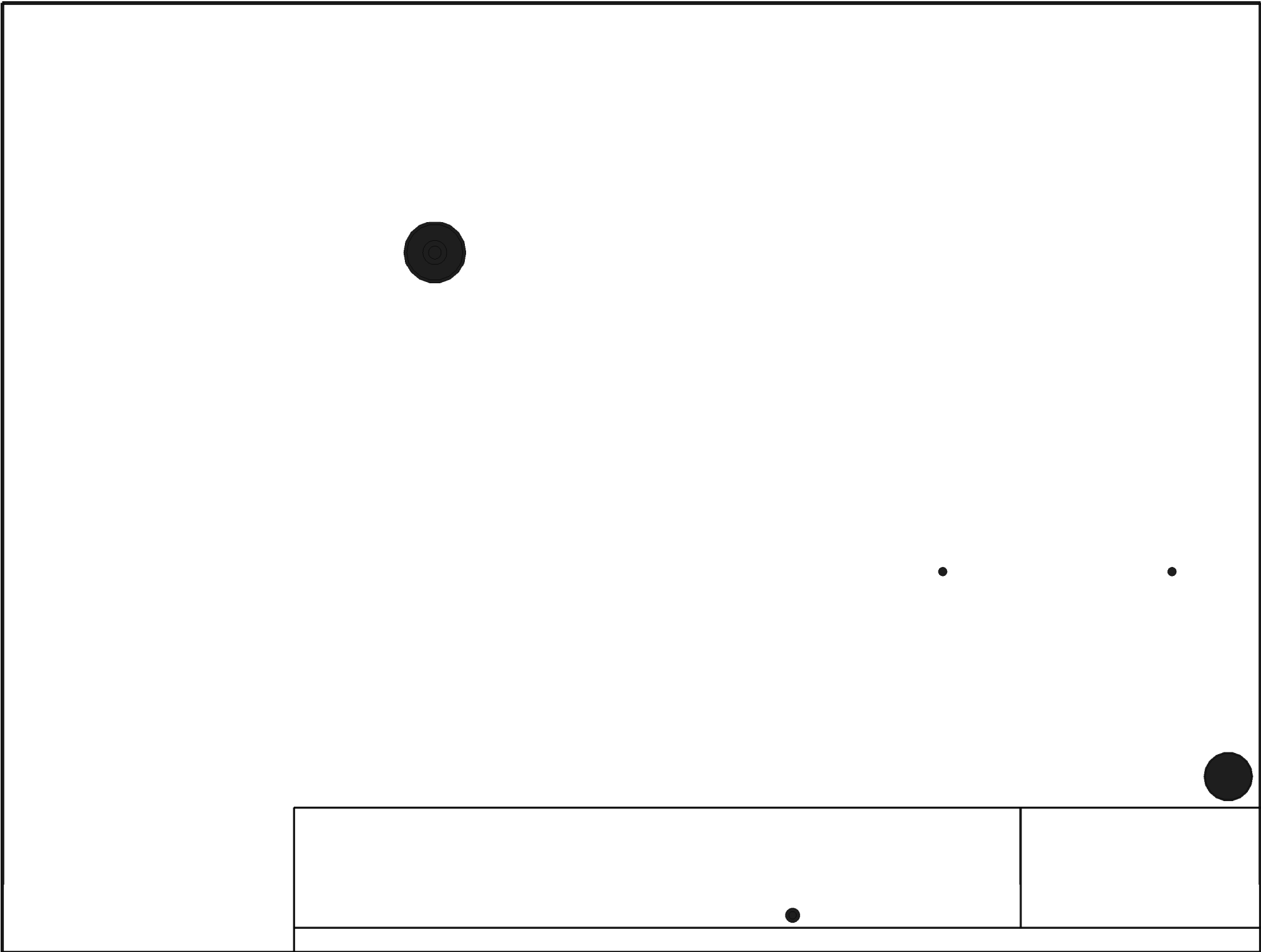


MARKING: PART: S726F002  
 BAG: 51F-726-002  
 DATE CODE  
 QTY. / PACK  
 (50 / BAG MAX.)



										00	REV. NO.	UNLESS OTHERWISE SPECIFIED DIMENSIONS ARE IN INCHES [MILLIMETERS] DO NOT SCALE	TOLERANCES UNLESS OTHERWISE SPECIFIED Dec. .x ± Dec. .xx ± Dec. .xxx ±.010 [25] Angles ± 0° 30"	SPECTRUM CONTROL INC. Dwn. Hassett Date 2-16-06 Engr. Struchen Sheet 1 of 1	FAIRVIEW PENNSYLVANIA Description FEED THRU RESIN SEAL FILTER 51F-726-002	
										CN 25673-CPD	CHANGE NOTICE NO.					CODE IDENT. NO. 0LSP2

Quality Products From The Specialists In Electro-Magnetic Comptability



## X-ON Electronics

Largest Supplier of Electrical and Electronic Components

*Click to view similar products for [EMI Feedthrough Filters](#) category:*

*Click to view products by [Api Technologies](#) manufacturer:*

Other Similar products are found below :

[FN7611-63-M6](#) [FN7612-10-M3](#) [FN7660-100-M8](#) [1202F-054](#) [1609991-8](#) [1609992-2](#) [16DFC6-C](#) [16FFD6-HE](#) [2-1609992-2](#) [2443-007-X5S0-102MLF](#) [2443-007-X5W0-502ZLF](#) [1609990-8](#) [1609991-3](#) [1609992-1](#) [1609992-3](#) [1609993-1](#) [1609993-7](#) [200AFC6-P](#) [200DFC6-P](#) [FN7510-100-M8](#) [FN7510-32-M4](#) [FN7562-100-M8](#) [FN7562-200-M10](#) [FN7563-100-M8](#) [FN7611-10-M3](#) [FN7612-63-M6](#) [2450-001-X5U0-102PLF](#) [2499-003-X5S0-152MLF](#) [32AFC6-H](#) [4100-000LF](#) [4201-050LF](#) [4204-001LF](#) [4253-002LF](#) [4305-001LF](#) [4306-019LF](#) [4101-004LF](#) [4201-003LF](#) [4208-000LF](#) [4600-067](#) [094-6526-0000](#) [100AFC6-G](#) [10AFC6-B](#) [10DFC6-C](#) [1-1609990-3](#) [1-1609990-7](#) [1-1609992-8](#) [1-1609990-1](#) [1-1609991-1](#) [FN7510-16-M4](#) [FN7514-32-M4](#)