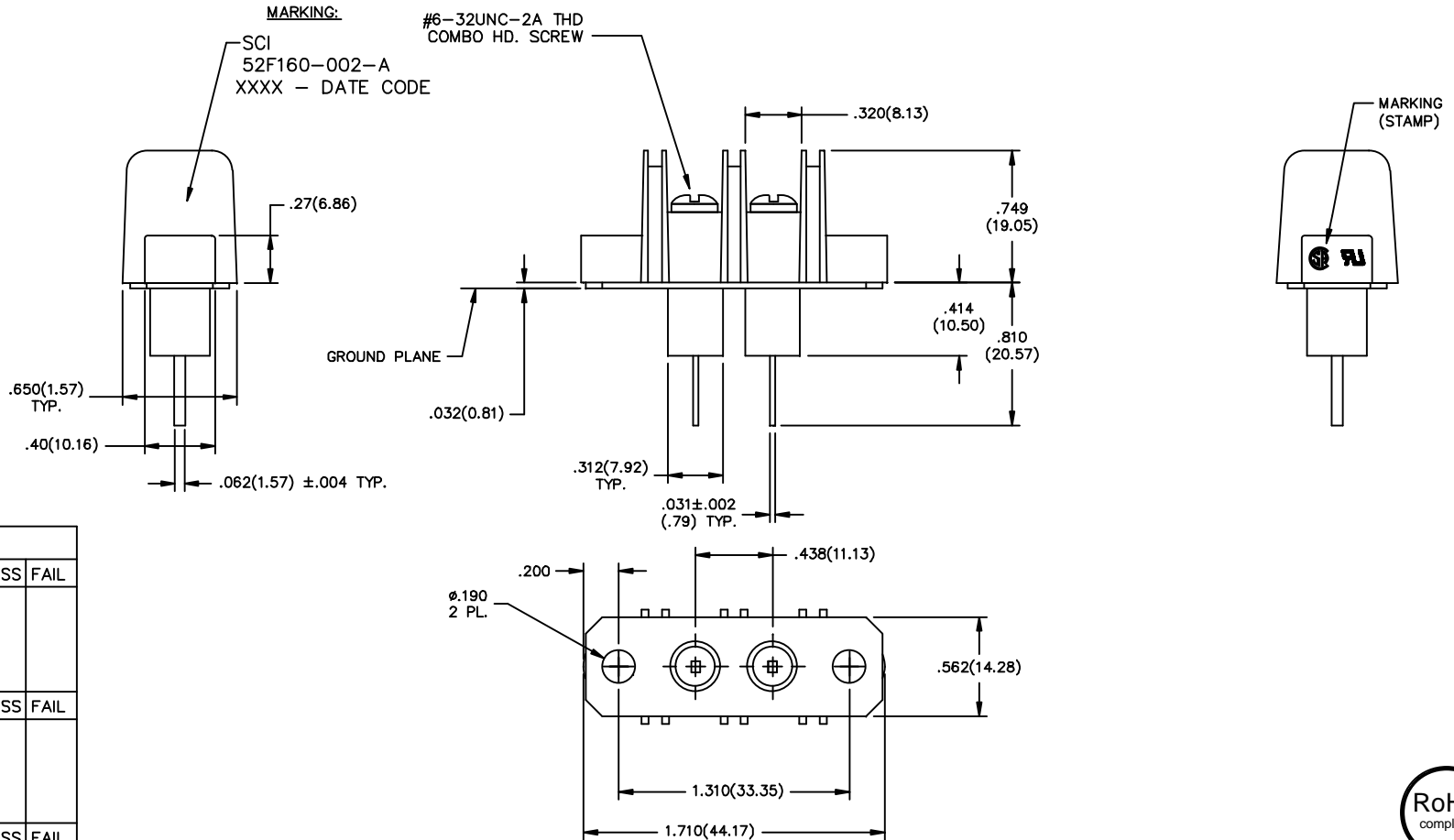


RECOMMENDED CUTOUT

MOUNTING HOLES AS REQUIRED

NOTES:

- 1) VOLTAGE: 100 VDC.
- 2) CURRENT: 20 AMPS.
- 3) OPERATING TEMPERATURE: -55°C TO +105°C.
- 4) MATERIAL: BLACK THERMOPLASTIC OR EQUIV.
- 5) SCREW TYPE: #6-32 PHILSLT HD.
- 6) MARKING: 4 PT. CHARACTERS, WHITE INK.
- 7) CAPACITANCE: 2500pF MIN./ 5200pF MAX.
- 8) GROUND PLANE IS TO BE FLAT WITHIN .012".
- 9) SHIPPING TRAY LABEL MARKING:
 SCI 52F160-002-A DATE CODE
 100V, 20A, 12-22AWG
 UL & CSA LOGOS



TEST SEQUENCE				
STEP	DESCRIPTION	VISUAL/MECH	PASS	FAIL
STEP 0400	INSPECTION	VISUAL/MECH	PASS	FAIL
PER IT 38-0468 INSPECT DIMENSIONS AND WORKMANSHIP. PER MIL-STD-105, LEVEL II, 1%AQL COMMENTS: 100%		OPER:		
STEP 0100	TESTING	CAP./D.F.	PASS	FAIL
PER IT 38-0245 CAP: 2500pF TO 5200pF DF: <4% MAX COMMENTS: 100%		OPER:		
STEP 0200	TESTING	DWV	PASS	FAIL
PER IT 38-0245 DWV: 2000 VDC 25°C 1 MINUTE MINIMUM COMMENTS: 100%		OPER:		
STEP 0300	TESTING	I.R.	PASS	FAIL
PER IT 38-0245 IR: 100VDC, 1000 Mohms MIN. 2 MINUTES MAX. COMMENTS: 100%		OPER:		

REV. NO.	DATE	DESCRIPTION
05		
04		
03		
02		
01		
00		

UNLESS OTHERWISE SPECIFIED
 DIMENSIONS ARE IN INCHES.
 (MILLIMETERS) DO NOT SCALE.

TOLERANCES UNLESS OTHERWISE SPECIFIED
 Fractions ± 1/64
 Dec. .xxx ± .03
 Dec. .xxx ± .020
 Angles ± 0° 30'

FAIRVIEW PENNSYLVANIA
 SPECTRUM CONTROL INC.
 Dwn. KAUFFMAN
 Date 3-18-09
 Engr. GRUNAUER
 Sheet 1 of 1

CODE IDENT. NO. DLSP2

THIRD ANGLE PROJECTION



X-ON Electronics

Largest Supplier of Electrical and Electronic Components

Click to view similar products for [Barrier Terminal Blocks](#) category:

Click to view products by [Api Technologies](#) manufacturer:

Other Similar products are found below :

[CR151D20104](#) [670A-RZ-15-KT20](#) [6C1N03](#) [6PCR-02](#) [6PCR-02-008](#) [6PCR-05-008](#) [6PCR-08-008](#) [6PCR-09-008](#) [6PCR-13-006](#) [6PCR-15-006](#) [6PCR-21-006](#) [6PCV-06-008](#) [6PCV-06-716](#) [6PCV-09-001](#) [6PCV-10-009](#) [6PCV-15-008](#) [6PCV-17-1206](#) [6PCV-20-323](#) [6PCV-20-720](#) [6PCV-30-006](#) [6STR-06-006](#) [6STR-08-006](#) [6STR-12-008](#) [6STR-13-006](#) [6STR-14-008](#) [6STR-16-008](#) [6STR-17-008](#) [6STR-21-008](#) [6STR-25-008](#) [6STR-27-008](#) [6STV-03-006](#) [6STV-03-008](#) [6STV-04-006](#) [6STV-09-006](#) [6STV-10-006](#) [6WWR-03-693](#) [6WWV-12-008](#) [72212603](#) [72504-C-50](#) [72506-C](#) [72507-C-50](#) [73203](#) [75505-C](#) [75505-C-50](#) [75510-C](#) [77010-50](#) [7C1N08](#) [812-GP-3/4ST-09](#) [8-1437402-5](#) [8PCR-06-006](#)