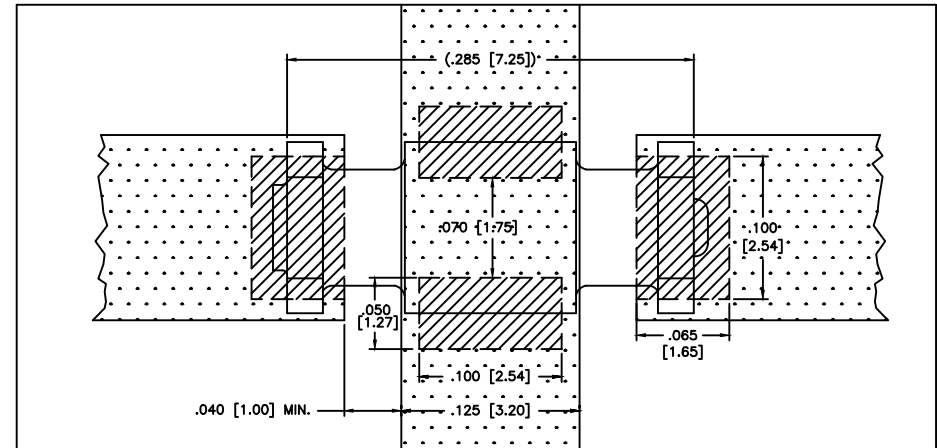
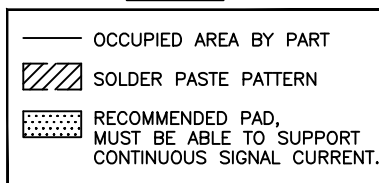


PART NUMBER	CURRENT RATING	TYPICAL INSERTION LOSS @ 25°C							
		1 MHz	10 MHz	30 MHz	50 MHz	100 MHz	300 MHz	500 MHz	1 GHz
PSM4F-103Z-02x *	2A	5	24	33	--	48	--	33	33
PSM4F-103Z-05x *	5A	* PACKAGING OPTIONS: x = B, BULK PACKAGE (1000 PCS MAX.) x = T0, TAPE & REEL, 7" (500 PCS) x = T2, TAPE & REEL, 13" (2000 PCS)							
PSM4F-103Z-10x *	10A								
PSM4F-103Z-15x *	15A								
PSM4F-103Z-20x *	20A								

MOUNTING INFORMATION

LEGEND

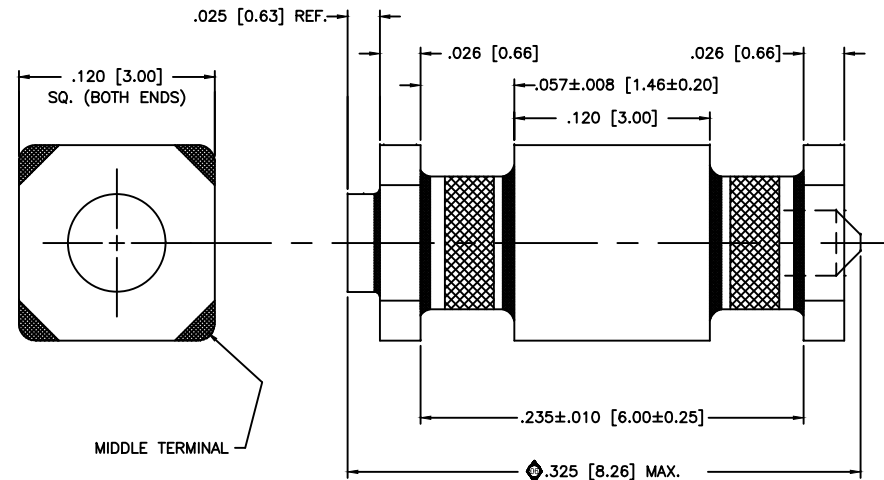


MARKING:

PART: NONE
 PACKAGE: PART NO.
 SCI DATE CODE
 QTY.

NOTES:

- 1) CAPACITANCE: 10,000pF
- 2) CAP TOLERANCE: +80%/-20%
- 3) INSULATION RESISTANCE: 25°C 1GOHM MIN.
- 4) 100 VDC RATED: -55°C to +125°C
- 5) DIELECTRIC WITHSTANDING VOLTAGE: 300 VDC
- 6) FINISH: SILVER
- 7) REFLOW TEMPERATURE LIMIT: +235°C FOR 5 SECONDS.



CIRCUIT CONFIGURATION



ECN 3569	06	CN 63986-ENG	05	CN 63227-ENG	04	REV. INCL.	UNLESS OTHERWISE SPECIFIED DIMENSIONS ARE IN INCHES [MILLIMETERS]	TOLERANCES UNLESS OTHERWISE SPECIFIED Fractions ± 1/64 Dec. .xxx ± .01(0.254) Dec. .xxx ± .005(0.127)	apl technologies corp.	FAIRVIEW PENNSYLVANIA
REDRAWN	CHANGE NOTICE	DO NOT SCALE	THIRD ANGLE PROJECTION	CODE IDENT. NO. 0LSP2	Angles ±0° 30'	Dwn. KAUFFMAN	Date 5-24-12	Apvd Devine	Description	SURFACE MOUNT FILTER
									Sheet 1 of 1	PSM4F-103Z-XX

Quality Products From The Specialists In Electro-Magnetic Compatibility

X-ON Electronics

Largest Supplier of Electrical and Electronic Components

Click to view similar products for [Feed Through Capacitors](#) category:

Click to view products by [Api Technologies](#) manufacturer:

Other Similar products are found below :

[PSM4-402Z-20B](#) [CKD110JB1E470S](#) [CKD510JB1E473S](#) [CKD510JB1H221S](#) [CKD510JB1H470S](#) [4700-003MLF](#) [4700-053LF](#) [4701-001MLF](#) [4701-002MLF](#) [SSM1-402E-10B](#) [SSM1-501P-10T1](#) [SSM1-402E-10T1](#) [SSM1-152P-05T1](#) [4700-009MLF](#) [SSM1-101Z-05B](#) [SSM1F-402E-10T1](#) [SSM1-202P-05T1](#) [0805J0500471MATE03](#) [PSM4-103Z-20T0](#) [0805J1000470MATE03](#) [SF0603C101SBNBB](#) [PSM4F-402Z-20T0](#) [CX0603MRX7R6BB104](#) [CX1206MKX7R9BB104](#) [CX0603MRX7R9BB103](#) [YFF15PC0J105MT000N](#) [NFM15CC222D1A3D](#) [NFM15CC223C1C3D](#) [NFM15CC223C1A3D](#) [NFM18PC225B1A3D](#) [CX0603MRX5R6BB224](#) [CX0603MRX7R9BB103](#) [CX0805MRX7R0BB103](#) [CX0805MRX7R8BB223](#) [CX1206MKX7R7BB224](#) [CX1206MKX7R9BB104](#) [NFM31HK104R1H3L](#) [NFM31HK223R1H3L](#) [NFM15PC224R1A3D](#) [DSS1NB32A223Q91A](#) [DSS1NB31H104Q91A](#) [NFE31PT101C1E9L](#) [NFE31PT220R1E9L](#) [NFE61PT330B1H9L](#) [NFE61PT681B1H9L](#) [NFM31KC104R1H3L](#) [NFM41CC223R2A3L](#) [DSS1NB32A103Q91A](#) [DSS1NB32A102Q91A](#) [NFE31PT471F1E9L](#)