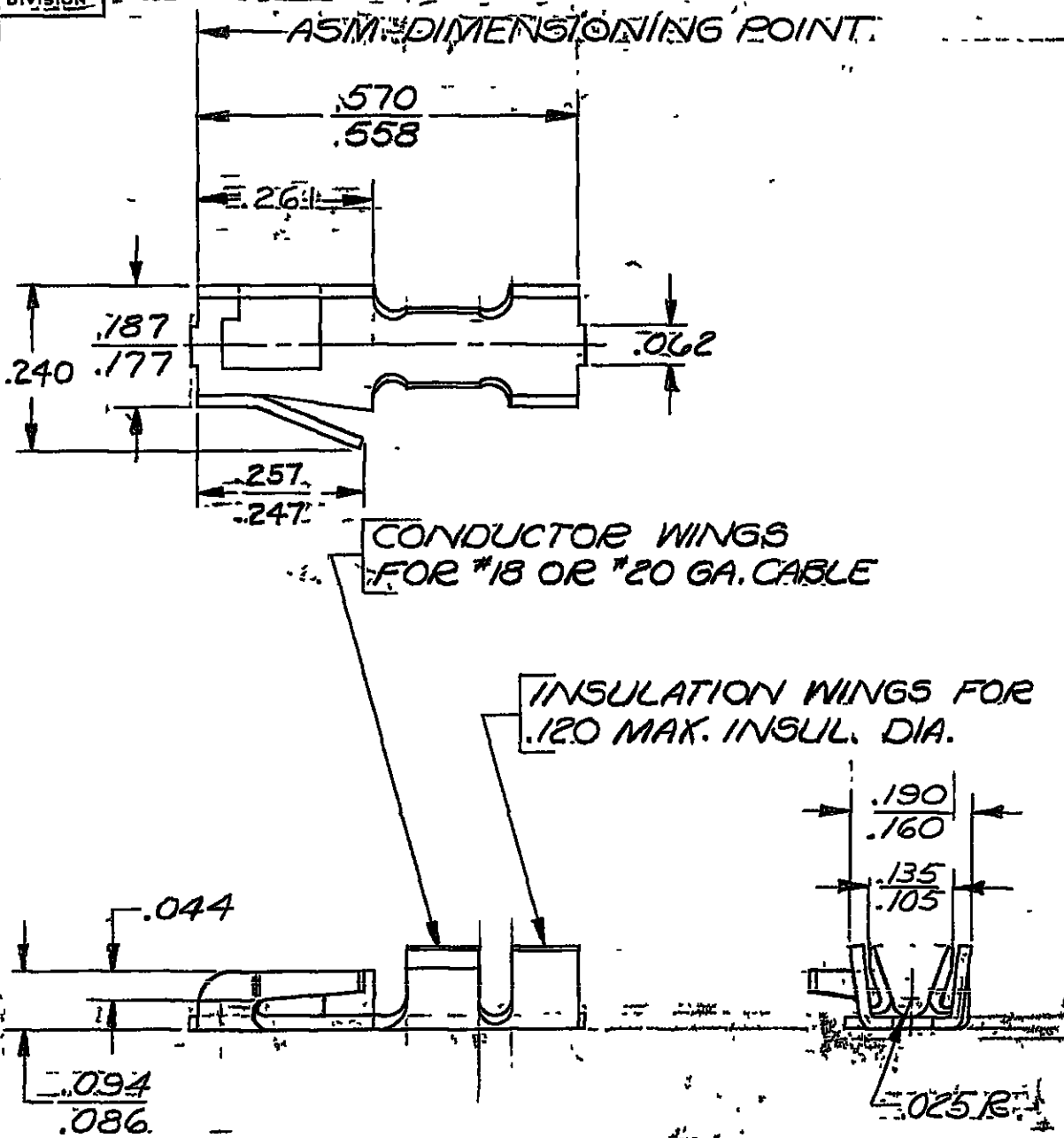


PACKARD ELECTRIC DIVISION
 GENERAL MOTORS CORPORATION
 WARREN, OHIO

WEK-A
 CHEV-V
 TR-V
 GMD-A
 19-A
 AM-P
 PEBA
 ACS-V
 BD-A
 99
 2240A

THIS DRAWING AND DESIGN, HEREON CONSTITUTES A PROPRIETARY DESIGN OF PACKARD ELECTRIC DIVISION AND IS NOT TO BE DUPLICATED OR REPRODUCED WITHOUT AUTHORITY OF PACKARD ELECTRIC DIVISION

D



C02D1788

PART NO. **2989637**

DATE	SYM	REVISION RECORD	C/N NO.
5-13-69	2	REDRAWN, MATZ. THICKNESS WAS .0179	35357
		DIMS. STANDARDIZED	
1-28-76	L	.257/.247 WAS .262/.252 .240 WAS .220	57697
16DE09	L1	UPDATED MAT'L CALLOUT	409658

CODE NO. **6900**
 TOLERANCE UNLESS OTHERWISE SPECIFIED
 DECIMAL ± .005
 FRACTIONAL ±
 ANGULAR ±

DWG. DATE **3-3-64** SCALE **NONE** DR. *Bowman*
 ROUTING DEPT. OUTST. CK. *B. Wilson* 3-6-64
 REFERENCE **2989637-C'SIZE** APPR. *Kennedy* 3/9

MATERIAL SPEC. METL NONFERROUS C26000 3/4 HD CODE NO.

NAME **TERMINAL - LAMP SOCKET FOR #18 OR #20 GA. CABLE**

PART NO. **2989637** SIZE **A**
OUTLINE DWG.

X-ON Electronics

Largest Supplier of Electrical and Electronic Components

Click to view similar products for [Automotive Connectors](#) category:

Click to view products by [APTIV](#) manufacturer:

Other Similar products are found below :

[003-018-000](#) [60403001](#) [60993906-B](#) [629515004020001](#) [M902-2131](#) [M902-2161](#) [72.330.1035.1](#) [73.353.4028.0](#) [F119300-B](#) [F166900](#)
[F258300-B](#) [F358300-B](#) [F407400](#) [F444110](#) [F487000](#) [F509500B-B](#) [827153-1](#) [8N1515-32-24P](#) [9-1326729-8](#) [925474-1](#) [928905-1](#) [964562-4](#)
[968782-1](#) [GT17SA-8DS-HU](#) [98891-1012](#) [98947-1016](#) [12004475-L](#) [12010290](#) [12010309-B](#) [12015454](#) [12020219-B](#) [12020308](#) [12041318-B](#)
[12052225-L](#) [12052466](#) [12059125](#) [12064869](#) [12004327-B](#) [12010503-B](#) [12015308](#) [12015384](#) [12015909](#) [1-21030-1](#) [12041254](#) [12041318](#)
[12047946-B](#) [12047957](#) [12047957-L](#) [12059473](#) [12066261](#)