

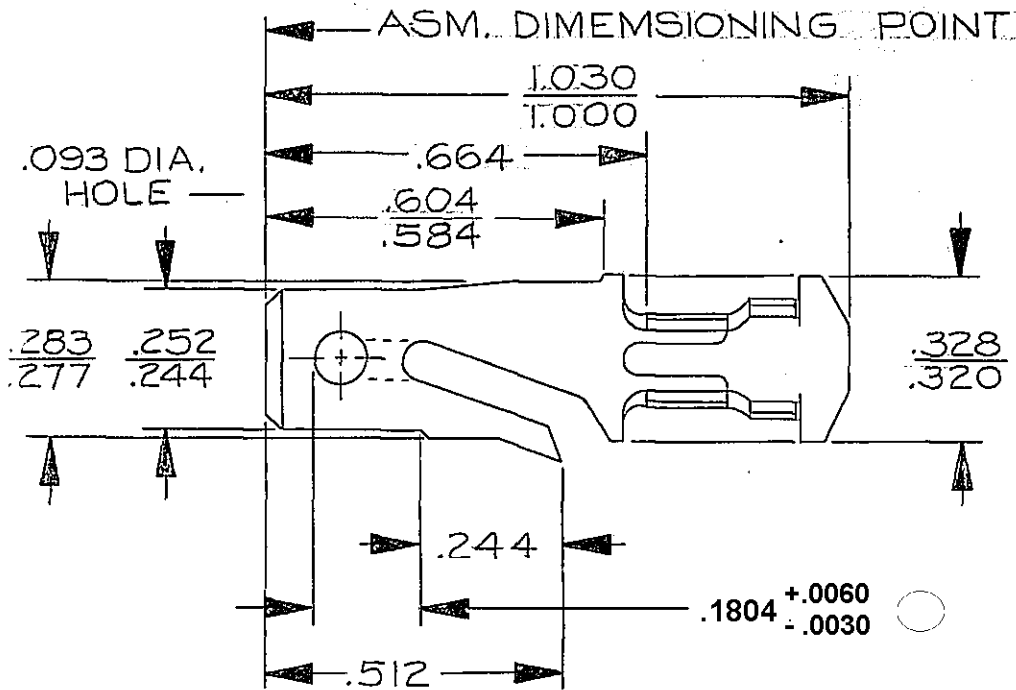
PACKARD ELECTRIC DIVISION
 GENERAL MOTORS CORPORATION
 WARREN, OHIO

0
 19-A
 1146
 ROUTING
 FEB 72
 65-R
 74-R
 76-R
 84-R
 830-R
 850-R
 875-R
 900-R
 952-R
 952-T-R
 1074-R
 PEE-R
 2052-R
 2371-R

DO NOT SCALE

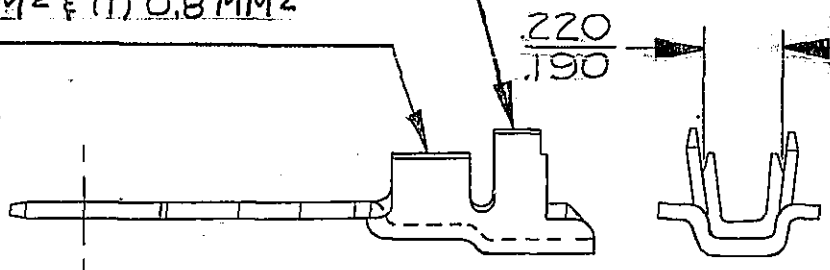
THIS DRAWING AND DESIGN HEREON CONSTITUTES A PROPRIETARY DESIGN OF PACKARD ELECTRIC DIVISION AND IS NOT TO BE DUPLICATED OR REPRODUCED WITHOUT AUTHORITY OF PACKARD ELECTRIC DIVISION.

D



INSULATION WINGS FOR (1) 2.40MM MAX. & (1) 3.13 MM MAX. INSULATION DIA. CABLES

CONDUCTOR WINGS FOR (1) 0.8-0.5MM² & (1) 0.8MM² CABLES



C02D2075

PART NO. **891 1677**

| DATE | SYM. | REVISION RECORD | C/NNO. | DR. | CK. |
|--------|------|---|--------|------|-----|
| 04SE79 | - | CABLE REVISED TO METRIC | 70645 | RAP | JJ |
| 08JN82 | AZ | REVISION SYMBOL ADV'D | 81339 | T.C. | Jm |
| 01SE82 | - | PICTURE REVISED | 82155 | T.W. | Jm |
| 01AU83 | BA | REV. SYM. ADVANCED | 86126 | MS | JM |
| 05DE05 | BA4 | ADDED DIM .1840 +.0060/-.0030 & REMOVED DIM (1 PLC) | 274727 | CCV | JVM |

CODE NO. 6900

TOLERANCE UNLESS OTHERWISE SPECIFIED
 DECIMAL:
 TWO PLACE ± .01
 THREE PLACE ± .005

QC

DWG. DATE 7-24-72 SCALE NONE

DR. *D. W. Sykes*

EST. NO. 101097

CK. *Hubbard* DATE 7-26-72

REFERENCE NO. "D" 2962864 SH.#1 SIZE

APPR. *J. Stanger* DATE 7-27-72

MATERIAL SPEC. 0320 THK. SAE CA. 260-BRASS 1/2 HARD-TIN PLATED

NAME TERMINAL-MALE-'56 SERIES

PART NO. **891 1677**
 OUTLINE DRAWING

SIZE **A**

2274-R 148-P - 3200 R - 2400 R 3000 R 99

4774-A

PACKARD ELECTRIC

X-ON Electronics

Largest Supplier of Electrical and Electronic Components

Click to view similar products for [Automotive Connectors](#) category:

Click to view products by [APTIV](#) manufacturer:

Other Similar products are found below :

[003-018-000](#) [60403001](#) [60993906-B](#) [629515004020001](#) [M902-2131](#) [M902-2161](#) [72.330.1035.1](#) [73.353.4028.0](#) [F119300-B](#) [F166900](#)
[F258300-B](#) [F358300-B](#) [F407400](#) [F444110](#) [F487000](#) [F509500B-B](#) [827153-1](#) [8N1515-32-24P](#) [9-1326729-8](#) [925474-1](#) [928905-1](#) [964562-4](#)
[968782-1](#) [GT17SA-8DS-HU](#) [98891-1012](#) [98947-1016](#) [12004475-L](#) [12010290](#) [12010309-B](#) [12015454](#) [12020219-B](#) [12020308](#) [12041318-B](#)
[12052225-L](#) [12052466](#) [12059125](#) [12064869](#) [12004327-B](#) [12010503-B](#) [12015308](#) [12015384](#) [12015909](#) [1-21030-1](#) [12041254](#) [12041318](#)
[12047946-B](#) [12047957](#) [12047957-L](#) [12059473](#) [12066261](#)