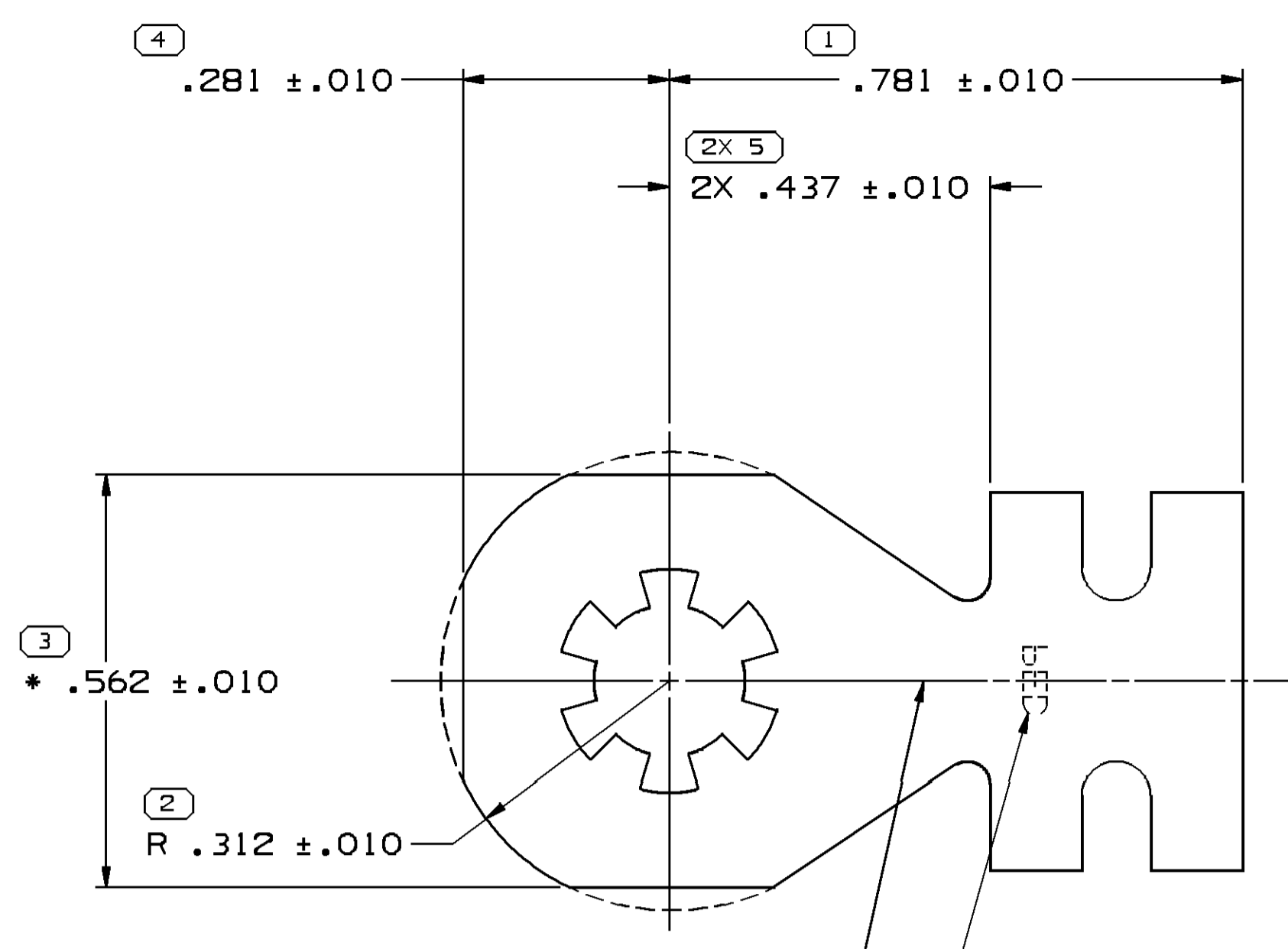


SYMBOL DEFINITION		TOTAL NO OF INSPECTIONS REQUIRED	MISSING SYMBOLS
A DIMENSION WITHOUT AN INSPECTION REPORT SYMBOL DOES NOT REQUIRE INSPECTION. IT MAY BE CONTROLLED ON THE INDIVIDUAL COMPONENT DRAWING.		21	NO MISSING SYMBOL NUMBER
		LAST NO. USED	19

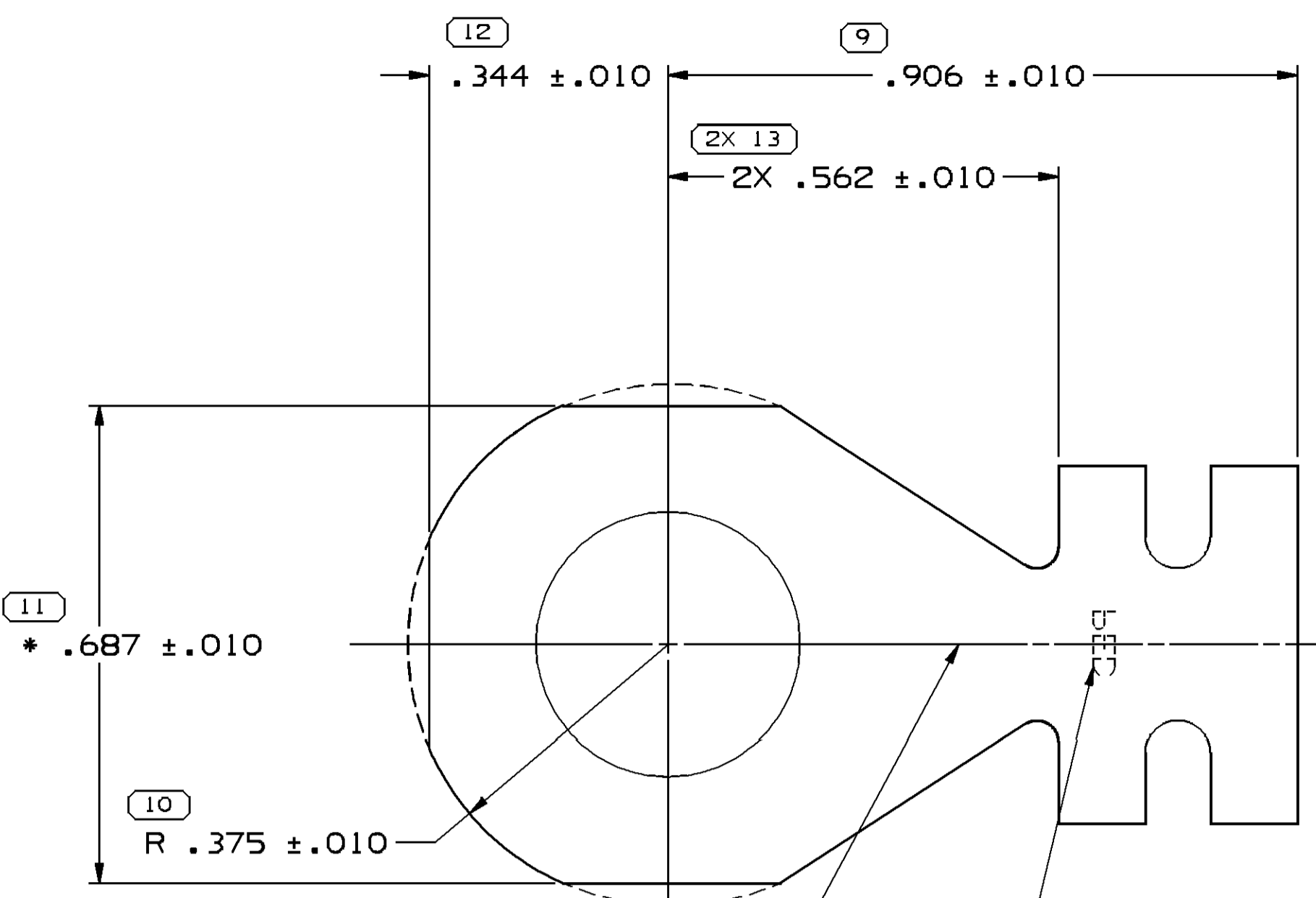
DWS STATUS				REVISION HISTORY				AUTH	DR	APVD	APVD	
DATE	STG	REV	N/P	CHG	ZONE							
10MR04	R	01	-	-		ALL PARTS - REDRAWN TO PD & REVISED SCREW/STUD CHART				252466	JTV/FKV	EH
14OC09	R	02	-	-		12004661, 12004469, 12004468, 12004466 & 12004464 - REVISED "I.D" NUMBER NOTE				409226	APR/RBC	APR



17) STAMP "I.D" NUMBER ON UNDERSIDE IN THIS AREA WITH .040 MIN HIGH CHARACTERS WHEN INDICATED IN CHART

18) STAMP "PED" ON UNDERSIDE IN THIS AREA WITH .040 MIN HIGH CHARACTERS WHEN INDICATED IN CHART.

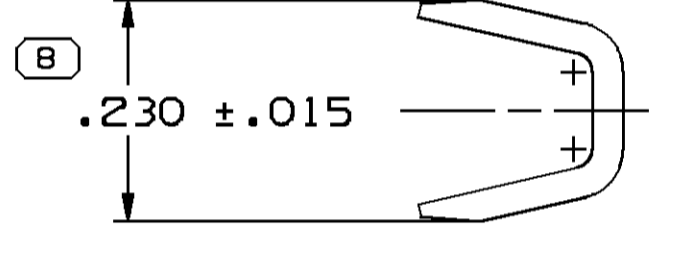
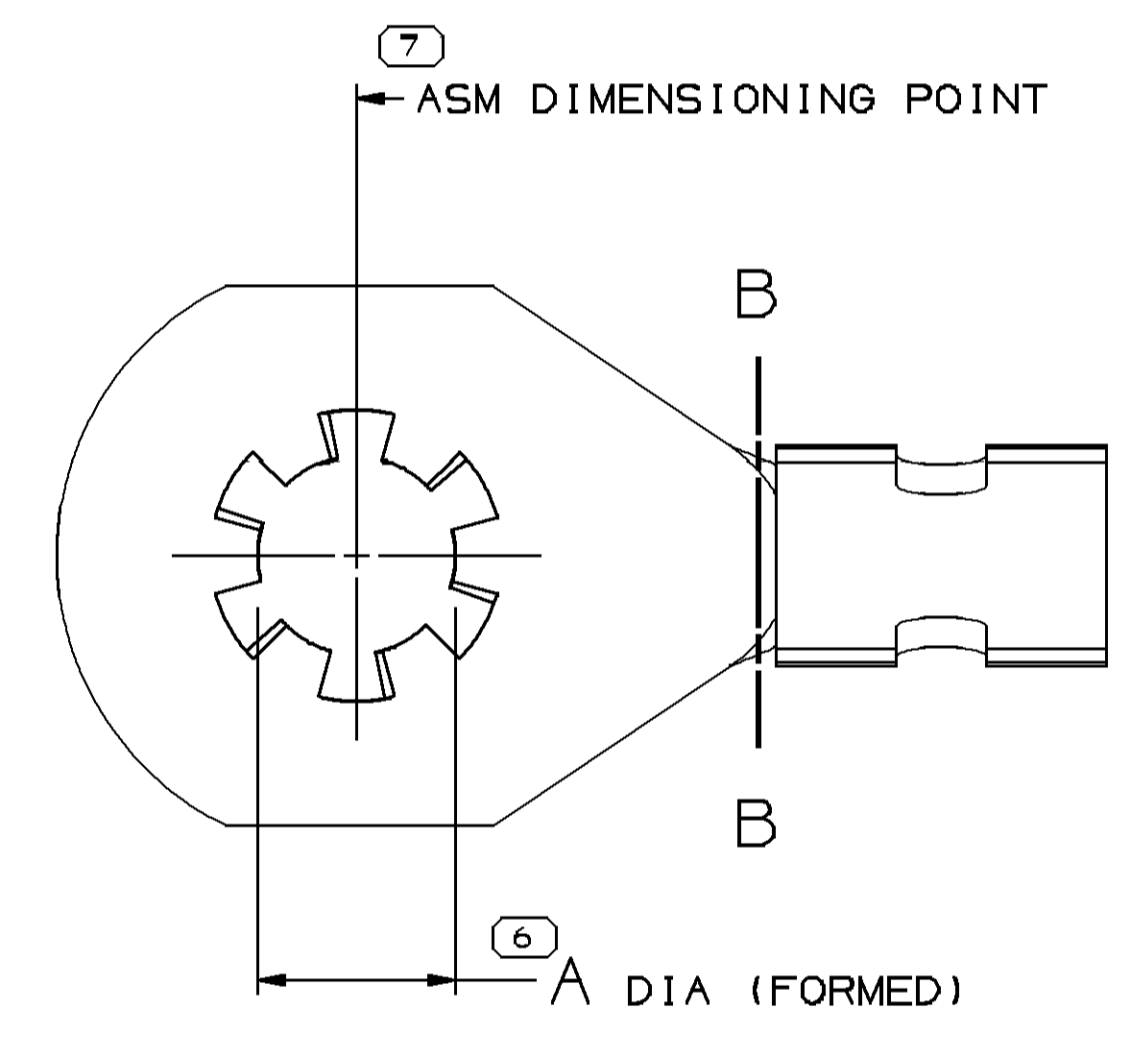
TYPE 101
BLANK VIEW (APPROX)



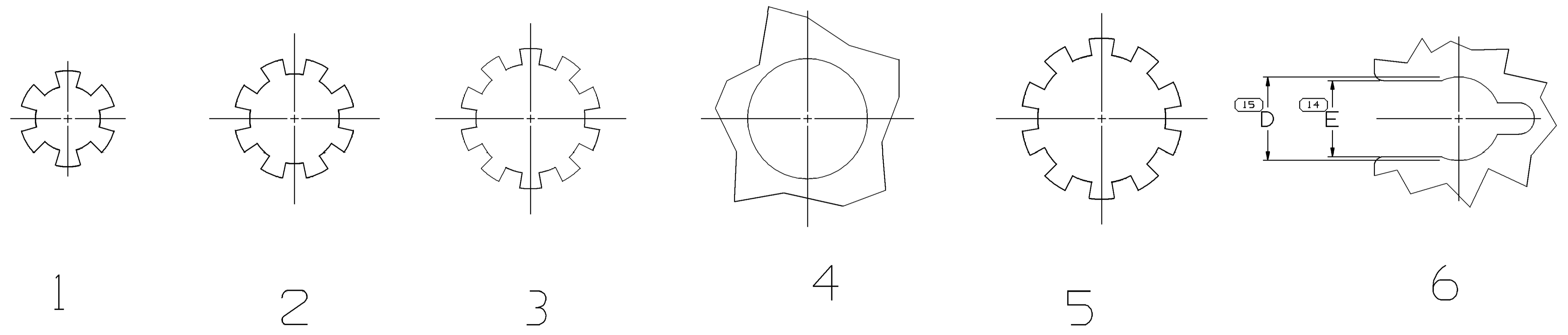
19) STAMP "I.D" NUMBER ON UNDERSIDE IN THIS AREA WITH .040 MIN HIGH CHARACTERS WHEN INDICATED IN CHART

18) STAMP "PED" ON UNDERSIDE IN THIS AREA WITH .040 MIN HIGH CHARACTERS.

TYPE 102
BLANK VIEW (APPROX)



VIEW TO B-B



HOLE CONSTRUCTIONS (BLANK)

- NOTES
- UNLESS OTHERWISE SPECIFIED AND/OR INDICATED: DIMENSIONS ARE TO FACE OF VIEW SHOWN AND AUTOMATICALLY ROUNDED BY COMPUTER FOR INSPECTION. (SEE MATH MODEL FOR PRECISE DIMENSIONS.) FOR ALL OTHER DIMENSIONS NOT SHOWN BUT REQUIRED FOR TOOL BUILD, SEE MATH MODEL FOR PRECISE TOOL PATH DATA.
 - * DENOTES DIMENSION IS TO BE MADE AT CUT OFF & CRIMP DIE
 - POSITION OF TABS MAY BE ROTATED ABOUT C OF HOLE
 - CRIMP WINGS ARE IDENTICAL
 - CRIMP WING ARE FOR 6.0 - 3.0 MM² BRAIDED GROUND STRAP

PART NO	REV	N/P	STATUS	MAT'L SIZE	MAT'L SPEC	PART NO	REV	N/P	STATUS	MAT'L SPEC	ID	TYPE	HOLE CONST	A	D	E	QC SPEC
				.032 X 1.062		12033839	B1	-		M3649134	102	4	.500				QC-C-1030
				.032 X 1.062		12004881	C2	-		M3649129	101	4	.343				QC-C-1030
12004474	A		OBSOLETE	.032 X 1.250	M1525134	12004475	B1	-		M3649134	102	5	.405				QC-C-1060
				.032 X 1.250		12004473	C1	-		M3649134	102	4	.405				QC-C-1030
				.032 X 1.250		12004472	C1	-		M3649134	102	4	.471				QC-C-1030
				.032 X 1.062		12004471	C	OBSOLETE		M3649129	101	6	.345	.296			QC-C-1029
				.032 X 1.062		12004470	C	OBSOLETE		M3649129	101	6	.264	.241			QC-C-1029
				.032 X 1.062		12004469	C2	-		M3649129	101	4	.280				QC-C-1030
12004462			OBSOLETE	.032 X 1.062	M1525129	12004468	B2	-		M3600129	101	3	.343				QC-C-1060
12004465	B		OBSOLETE	.032 X 1.062	M1525129	12004466	B2	-		M3600129	101	2	.280				QC-C-1060
12004463	A		OBSOLETE	.032 X 1.062	M1525129	12004464	B4	-		M3600129	101	1	.202				QC-C-1060
PART NO	REV <td>N/P</td> <td>STATUS</td> <td>MAT'L SIZE</td> <td>MAT'L SPEC</td> <td>PART NO</td> <td>REV</td> <td>N/P</td> <td>STATUS</td> <td>MAT'L SPEC</td> <td>ID</td> <td>TYPE</td> <td>HOLE CONST</td> <td>A</td> <td>D</td> <td>E</td> <td>QC SPEC</td>	N/P	STATUS	MAT'L SIZE	MAT'L SPEC	PART NO	REV	N/P	STATUS	MAT'L SPEC	ID	TYPE	HOLE CONST	A	D	E	QC SPEC
				UNPLATED						TIN PLATED							

DIA A/D	STANDARD	METRIC
.500	1/2	-
.471	7/16	-
.405	3/8	M10
.343	5/16	M8
.280	1/4	M6.3
.202	#10	-
DIA A/D		STANDARD METRIC
		SCREW/STUD SIZE

(N/A) PROCESS SENSITIVE DIMENSION	
DIMENSIONAL RANGE (IN)	CHART J
FROM 0	> 500
TO .500	
TOLERANCE UNLESS OTHERWISE SPECIFIED	
±.005	±.010
ANGULAR TOLERANCE ±2°	

PART DRAWING	
STYLE	
VOLUME (QTY)	DISTR CODE
UNLESS OTHERWISE SPECIFIED	
THIS DOCUMENT IS IN ACCORDANCE WITH ASME Y14.5M-1994 AS MODIFIED BY THE 2003 SUPPLEMENT AND TELEPHONING ADDENDUM-2001. SEPARATE PATTERNS OF FEATURES MAY BE SHOWN SEPARATELY REGARDLESS OF DATUM REFERENCES.	
ALL DIMENSIONS ARE IN INCHES	
THIRD ANGLE PROJECTION	DO NOT SCALE USE MATH DATA

DELPHI
DELPHI PACKARD ELECTRICAL/ELECTRONIC ARCHITECTURE
WARREN, OH

DR	DATE
APV01 JOSE LUIS TAPIA	10MR04
APV02 FRANCISCO KOPCA	10MR04
APV03 ERIC HAROLDSON	11MR04
APV04	
APV05	

SUBSTANCES OF CONCERN AND RECYCLED CONTENT PER DELPHI (0944990)

MATERIAL: SEE CHART

DRAWING NAME: TAXI TERM RING GRD STRAP

DRAWING NUMBER: 12004462

SIZE	SCALE	FRAME NO	SHEET NO	STG	REV	N/P
A0	5:1	1	1	OF 2	R	02

X-ON Electronics

Largest Supplier of Electrical and Electronic Components

Click to view similar products for [Automotive Connectors](#) category:

Click to view products by [APTIV](#) manufacturer:

Other Similar products are found below :

[003-018-000](#) [60403001](#) [60993906-B](#) [629515004020001](#) [M902-2131](#) [M902-2161](#) [72.330.1035.1](#) [73.353.4028.0](#) [F119300-B](#) [F166900](#)
[F258300-B](#) [F358300-B](#) [F407400](#) [F444110](#) [F487000](#) [F509500B-B](#) [827153-1](#) [8N1515-32-24P](#) [9-1326729-8](#) [925474-1](#) [928905-1](#) [964562-4](#)
[968782-1](#) [GT17SA-8DS-HU](#) [98891-1012](#) [98947-1016](#) [12004475-L](#) [12010290](#) [12010309-B](#) [12015454](#) [12020219-B](#) [12020308](#) [12041318-B](#)
[12052225-L](#) [12052466](#) [12059125](#) [12064869](#) [12004327-B](#) [12010503-B](#) [12015308](#) [12015384](#) [12015909](#) [1-21030-1](#) [12041254](#) [12041318](#)
[12047946-B](#) [12047957](#) [12047957-L](#) [12059473](#) [12066261](#)