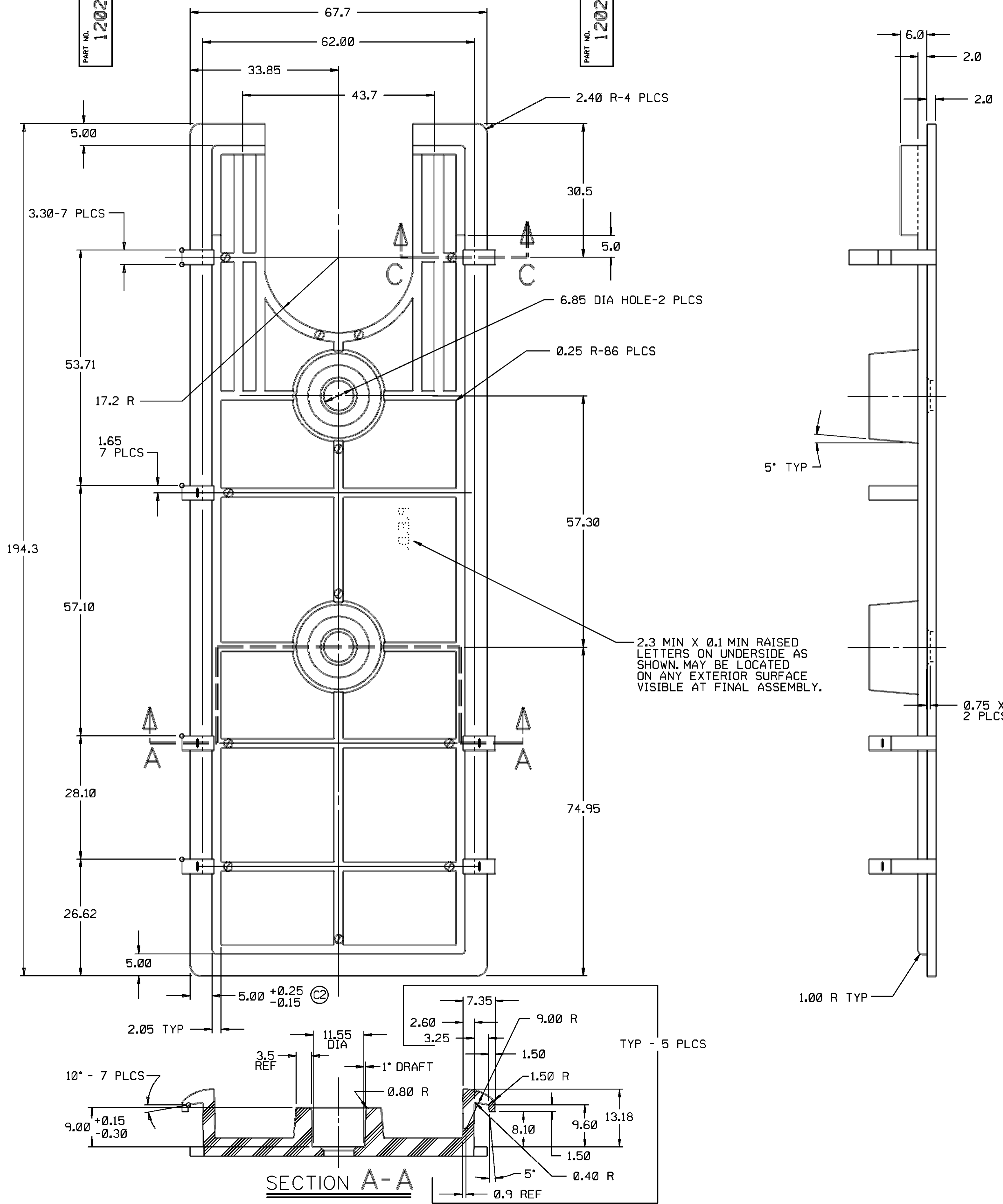


THIS DRAWING AND DESIGN HEREON CONSTITUTES A PROPRIETARY DESIGN OF PACKARD ELECTRIC DIVISION AND IS NOT TO BE DUPLICATED OR REPRODUCED WITHOUT AUTHORITY OF PACKARD ELECTRIC DIVISION.

DO NOT SCALE

PACKARD ELECTRIC DIVISION
GENERAL MOTORS CORPORATION
WARREN, OHIO



NOTES:—1. THIS PART IS NOT CONTROLLED FOR AUTOMATIC FEEDING.
2. MATES WITH 12015223 CONNECTOR.
3. Ⓞ DENOTES AREAS THAT MOLD EJECTION PINS ARE PERMISSIBLE.

DATE	SYM	REVISION RECORD	AUTHORITY	DR	CK
270C80	A	RELEASED	80005	DB	GF
26FE81		REVISED	75885	SAE	JK
06AP89	A1	ADDED DIM 1.00 R - 7 PLCS	125851	JS	JS
10AP90	B	REDRAWN AND REVISED	133890	SC	SC
15SE90	B1	9.00 ± 0.15 / -0.30 WAS 9.00,			
		R0071754 WAS R0067535	136945	TPM	TPM
08NO90	C	REVISED LOCK ARMS - 5 PLCS, REMOVED			
		61.10 DIM, AND SECTION B-B, ADDED			
		8.10 DIM, AND TYP - 7 PLCS TO			
		SECTION C-C	139149	SC	SC
10JA91	C1	REVISED FIVE LOCK ARMS & TYP-2 PLCS			
		WAS TYP-7 PLCS	139710	JC	JC
17JA13	C2	DIM 5.00 ± 0.25 / -0.15 WAS 5.00	411140	MNN	JPZ

PIE/D/INTEGRAPH MICROSTATION	FILE SPEC: ***USER*** DGN#SPECIFICATION#***** *****SYTIME*****
THIRD ANGLE PROJECTION	METRIC DIMENSIONS ARE IN MILLIMETERS UNLESS OTHERWISE SPECIFIED.
CODE NO. 6900	TOLERANCE UNLESS OTHERWISE SPECIFIED DECIMAL ANGULAR ± 2°
O.C. -C-4004	ONE PLACE ± 0.3 TWO PLACE ± 0.15
DWG. DATE 23SE80	SCALE 2:1
EST. NO.	DR. DAVE BOCK 270C80
REFERENCE NO.	CK. GREG FERRANCE DATE 25N080 APPR. C. NEATOS DATE 25N080 APPR. J.M. CHUPAK DATE 25N080
MATERIAL SPEC.	R0071754 (NY. - BLK.)
NAME	COVER - RELAY BLOCK
PART NO.	1202 0180

X-ON Electronics

Largest Supplier of Electrical and Electronic Components

Click to view similar products for [Automotive Connectors](#) category:

Click to view products by [APTIV](#) manufacturer:

Other Similar products are found below :

[003-018-000](#) [60403001](#) [60993906-B](#) [629515004020001](#) [M902-2131](#) [M902-2161](#) [72.330.1035.1](#) [73.353.4028.0](#) [F119300-B](#) [F166900](#)
[F258300-B](#) [F358300-B](#) [F407400](#) [F444110](#) [F487000](#) [F509500B-B](#) [827153-1](#) [8N1515-32-24P](#) [9-1326729-8](#) [925474-1](#) [928905-1](#) [964562-4](#)
[968782-1](#) [GT17SA-8DS-HU](#) [98891-1012](#) [98947-1016](#) [12004475-L](#) [12010290](#) [12010309-B](#) [12015454](#) [12020219-B](#) [12020308](#) [12041318-B](#)
[12052225-L](#) [12052466](#) [12059125](#) [12064869](#) [12004327-B](#) [12010503-B](#) [12015308](#) [12015384](#) [12015909](#) [1-21030-1](#) [12041254](#) [12041318](#)
[12047946-B](#) [12047957](#) [12047957-L](#) [12059473](#) [12066261](#)