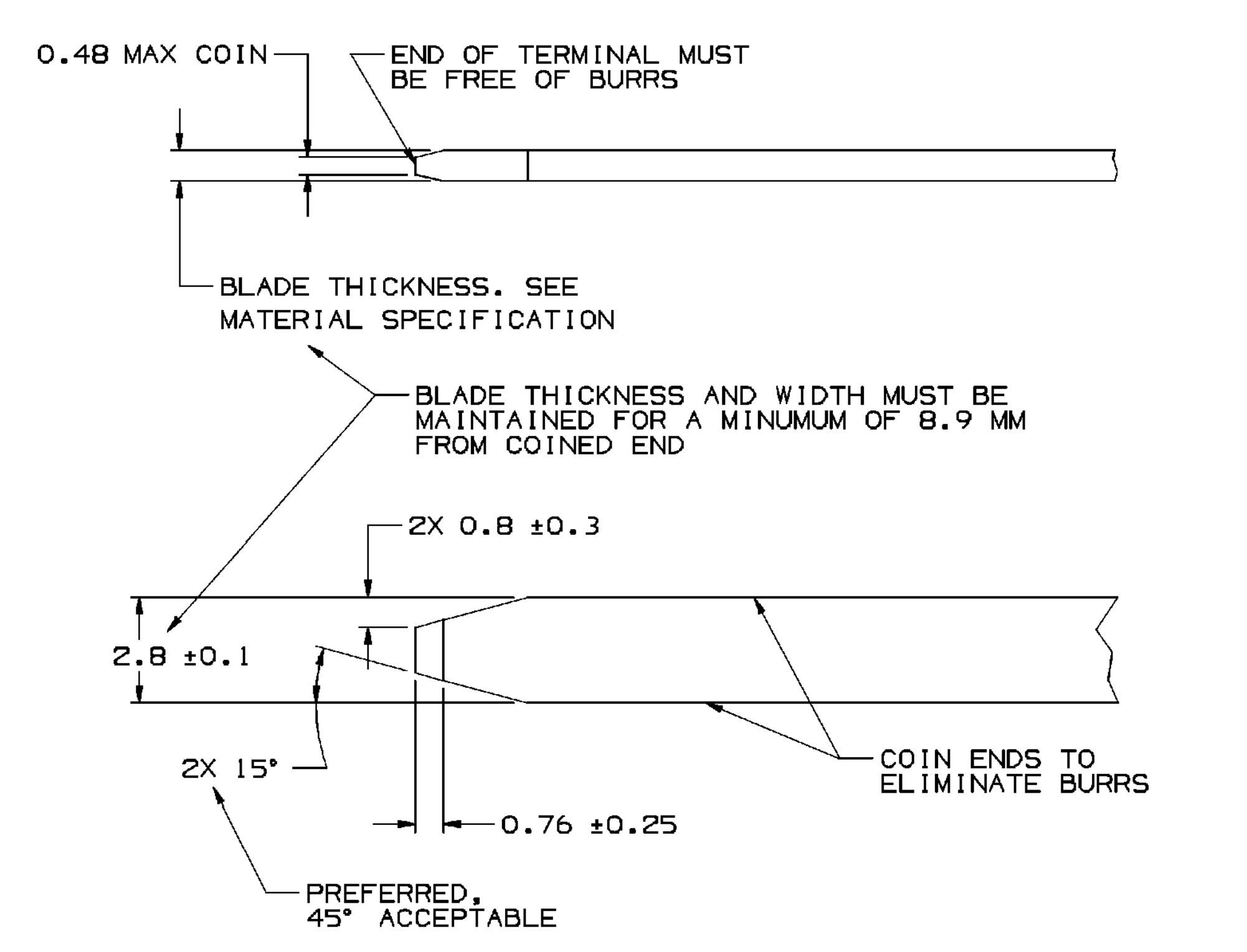


SYMBOL DEFINITION					TOTAL NO OF INSPECTIONS REQUIRED		MISSING SYMBOLS	
A DIMENSION WITHOUT AN INSPECTION REPORT SYMBOL DOES NOT REQUIRE INSPECTION. IT MAY BE CONTROLLED ON THE INDIVIDUAL COMPONENT DRAWING.					13		NO MISSING SYMBOL NUMBER	
					LAST NO. USED	13		

DWG STATUS				REVISION HISTORY				AUTH		DR		APPROV	
DATE	STD	REV	N/P	CHK	ZONE								
13JUN00	R	01	-	-		CLEARED REV COLUMN & ALL PARTS - REDRAWN TO PD & 30.4 +0.15/-0.2 WAS 30.4	201186	RTG	GMC	DN			
10MY06	R	02	-	-		ALL PARTS - ADDED CONN SEAL INFO	280308	JBD	JAA	WTM			



RECOMMENDED
 BASE METAL - CDA-210, GILDING, EXTRA SPRING TEMPER
 PLATING - 0.005±0.0025 MM THICK TIN

MINIMUMS
 ELECTRICAL CONDUCTIVITY - ≥ 20% IACS @ 20°C. USE OF A MATERIAL WITH CONDUCTIVITY < 20% IACS MUST BE APPROVED BY PACKARD ELECTRIC MATERIALS ENGINEERING.

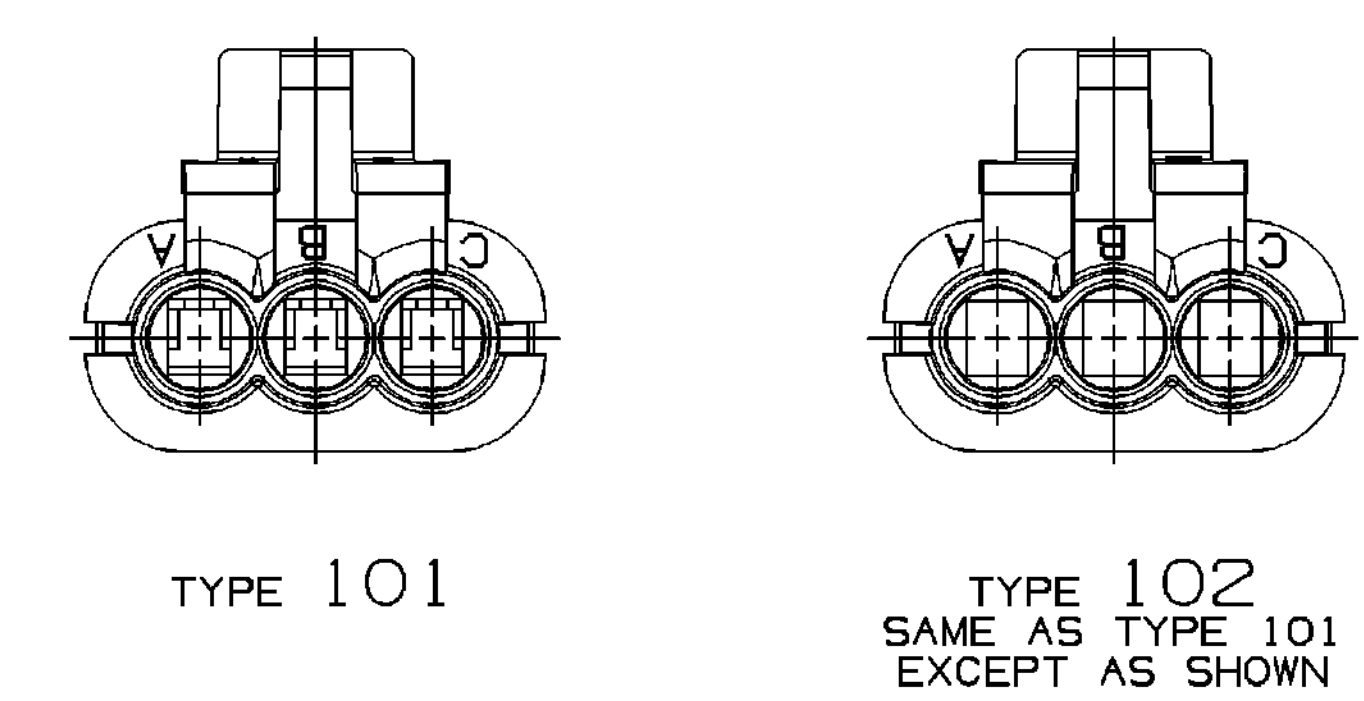
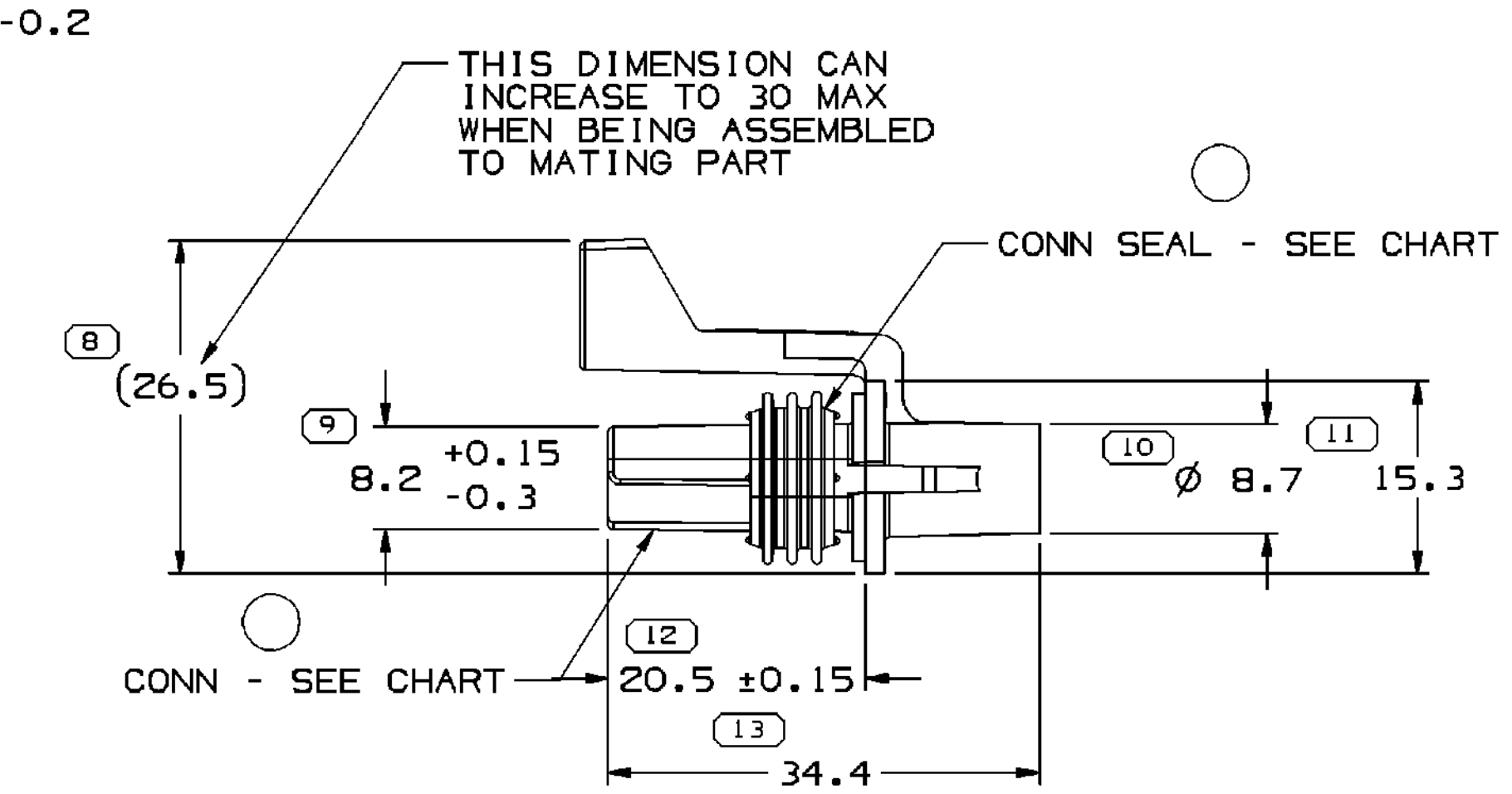
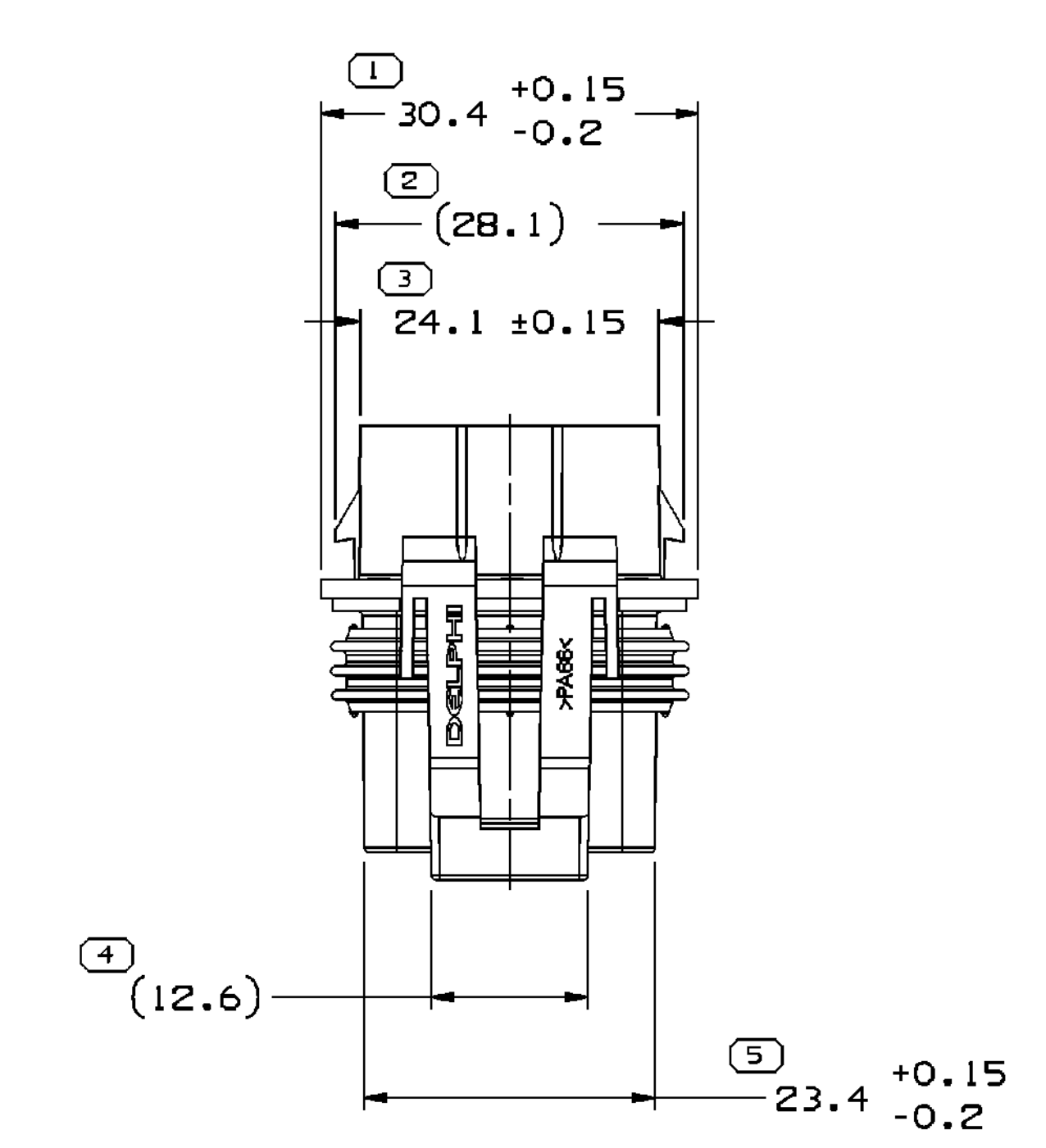
TENSILE STRENGTH - 407 MPa

PLATING - FOR LOW ENERGY (< 5V) AND NON-PASSENGER COMPARTMENT POWER CIRCUITS, 0.005±0.0025 MM THICK TIN. FOR MATERIALS CONTAINING 10% OR MORE ZINC, AN UNDERPLATE OF COPPER 0.005±0.0025 MM THICK IS REQUIRED.

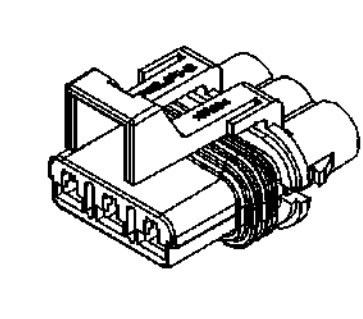
BLADE THICKNESS
 UNPLATED = 0.813 ± 0.025
 TIN PLATED = 0.823 ± 0.03

MATING TERMINAL INFORMATION
 SCALE 8:1

MATING CONNECTOR INFORMATION



- NOTES**
- UNLESS OTHERWISE SPECIFIED AND/OR INDICATED:
 DIMENSIONS ARE TO FACE OF VIEW SHOWN AND AUTOMATICALLY ROUNDED BY COMPUTER FOR INSPECTION (SEE MATH MODEL FOR PRECISE DIMENSIONS). FOR ALL OTHER DIMENSIONS NOT SHOWN BUT REQUIRED FOR TOOL BUILD, SEE MATH MODEL FOR PRECISE TOOL PATH DATA.
 - WHEN PARTS ARE SHIPPED THEY MUST BE PACKED IN PLASTIC BAGS OR SHIPPING CONTAINERS MUST BE LINED WITH PLASTIC LINERS. BAGS OR LINERS MUST BE SEALED TO AVOID FOREIGN MATTER.
 - SEALING CODE 3 - DESIGN WILL PASS SALT FOG AND IMMERSION TEST AFTER CONDITIONING AS SPECIFIED IN ESA-644 (WEATHER-PACK), ESA-710 (METRI-PACK), ESA-650 (UNDERHOOD MICRO-PACK), C-4006 (WORLD CONNECTOR), ETC WHEN MATED TO MATING PART OR EQUIVALENT.
 - THIS PART ACCEPTS THE FOLLOWING COMPONENTS OR EQUIVALENT:
 TERMINAL 12077411
 SECONDARY TERMINAL LOCK 12034145
 CABLE SEAL 12015323
 CONNECTOR POSITION ASSURANCE LOCK 12020833



TYPE 101

TYPE 101

TYPE 102
 SAME AS TYPE 101
 EXCEPT AS SHOWN

PART NO	REV	N/P	STATUS	TYPE	CONNECTOR	CONN COLOR	CONN SEAL	BLOCKED CAVITIES	MATING DEVICE	MATING CONNECTOR
12177244	A2	-	-	102	12176686	GRAY	12034144	-	-	15300003
12040977	A2	-	-	101	12040951	BLACK	12034144	-	AC25007562	15300003

DIMENSIONAL RANGE (MM)		TOLERANCE UNLESS OTHERWISE SPECIFIED	
FROM	TO	±	ANGULAR TOLERANCE
> 0	> 30	±0.15	±0.5
30	75	±0.2	±0.6
75	150	±0.3	±0.8
150	300	±0.4	±1.0
300	400	±0.5	±1.2

DELPHI
 DELPHI PACKARD ELECTRIC SYSTEMS
 WARREN, MI

DATE: 13 JUN 95

DR: W. TURNBULL
 APV02: D. BRANTINGHAM
 APV03: R. KEEN
 APV04:

SUBSTANCES OF CONCERN AND RECYCLED CONTENT PER DELPHI 1044901

SEE CHART

DRAWING NAME:
 TAXI ASM CONN F M/P 280 SLD

DRAWING NUMBER:
 12177245

SCALE: 2:1
 SHEET NO: 1 OF 1
 REV: R 02

DATE: 03/27/06 08:00:00 AM
 Dwg: 33-Aug-06
 Title: 1133

X-ON Electronics

Largest Supplier of Electrical and Electronic Components

Click to view similar products for [Automotive Connectors](#) category:

Click to view products by [APTIV](#) manufacturer:

Other Similar products are found below :

[003-018-000](#) [60993906-B](#) [72.330.1035.1](#) [776880-1](#) [827153-1](#) [9-1326729-8](#) [9-221607-5](#) [925474-1](#) [928905-1](#) [964562-4](#) [968782-1](#) [12004468](#)
[12004475-L](#) [12004483](#) [12052466](#) [12066163](#) [12015909](#) [12077753](#) [1-21030-1](#) [12047957](#) [12047958](#) [12084688](#) [12185550](#) [12336-12](#) [1-](#)
[326211-1](#) [13681974](#) [13688972](#) [13755420](#) [13779834](#) [13783086](#) [13843152](#) [13522378](#) [13581967](#) [13669624](#) [13675513](#) [13753471](#) [13946876](#)
[13953457](#) [13955963](#) [13964573](#) [13971791](#) [13790534-L](#) [13797473](#) [13805590](#) [13888202](#) [1428188-1](#) [1437287-3](#) [1428188-2](#) [DS07-19S-5020](#)
[1456983-5](#)