
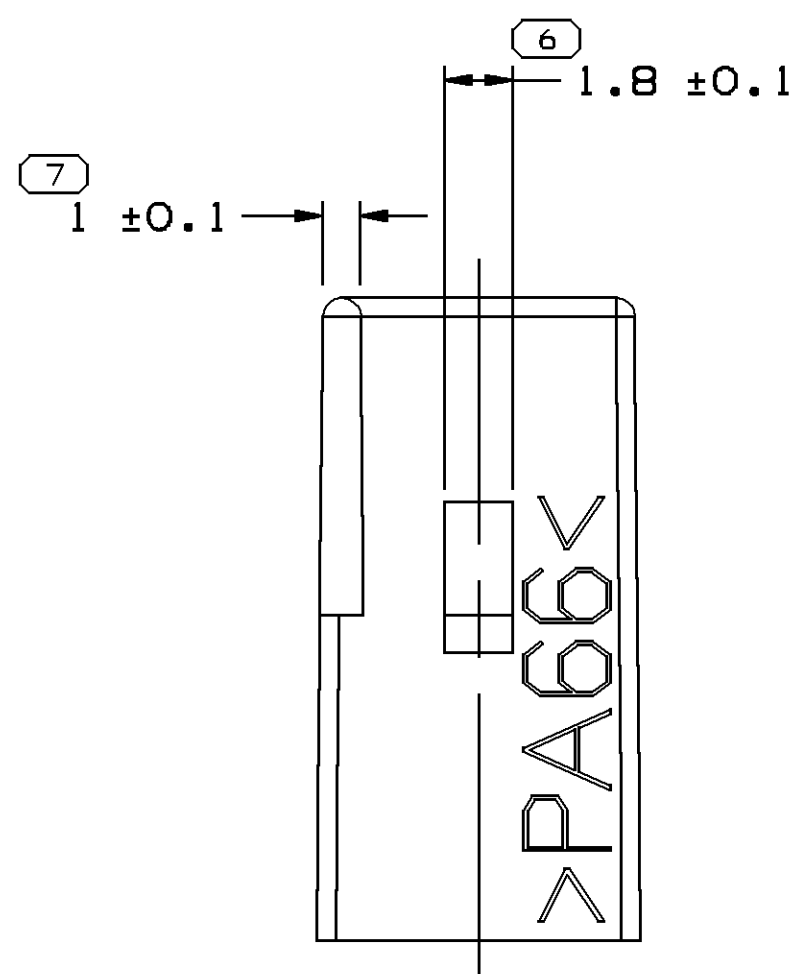
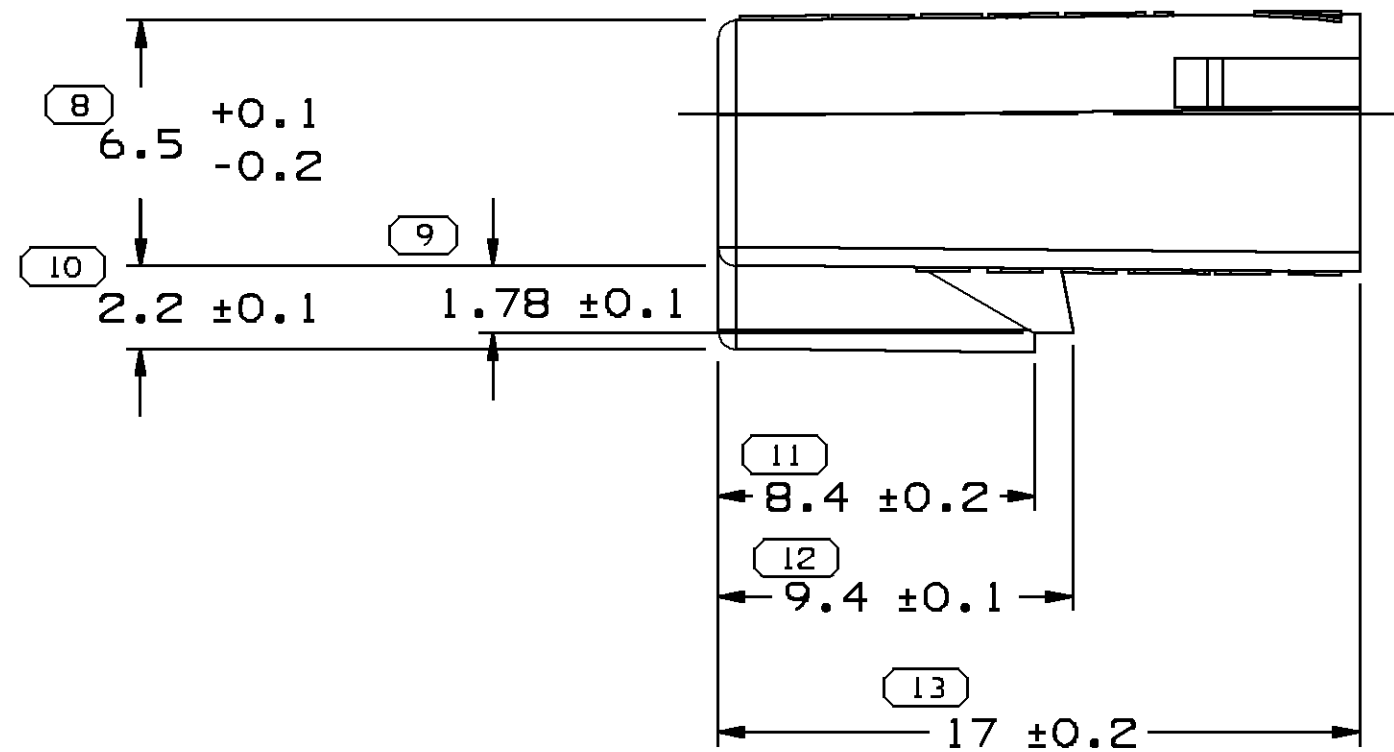
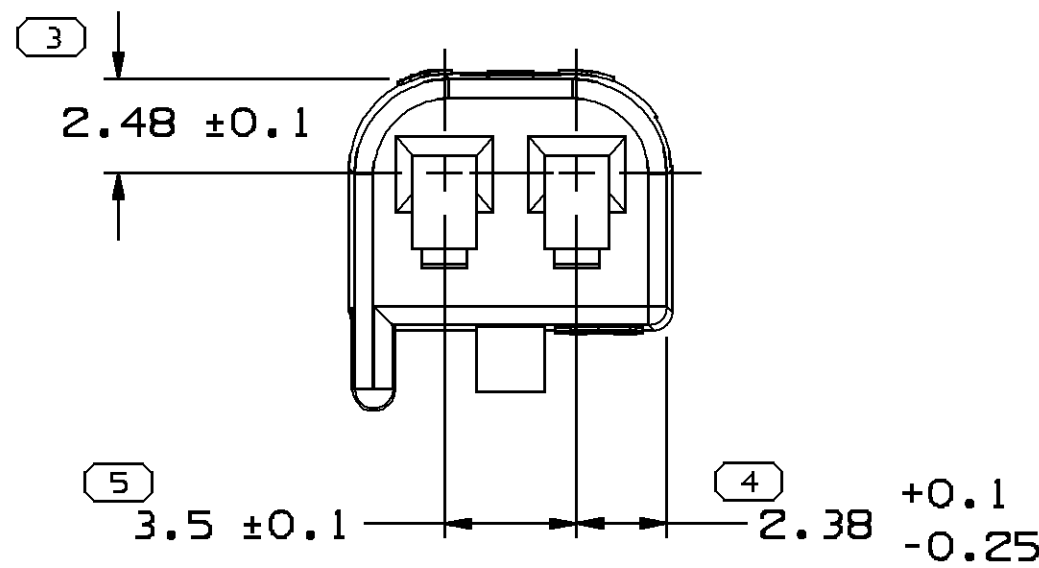
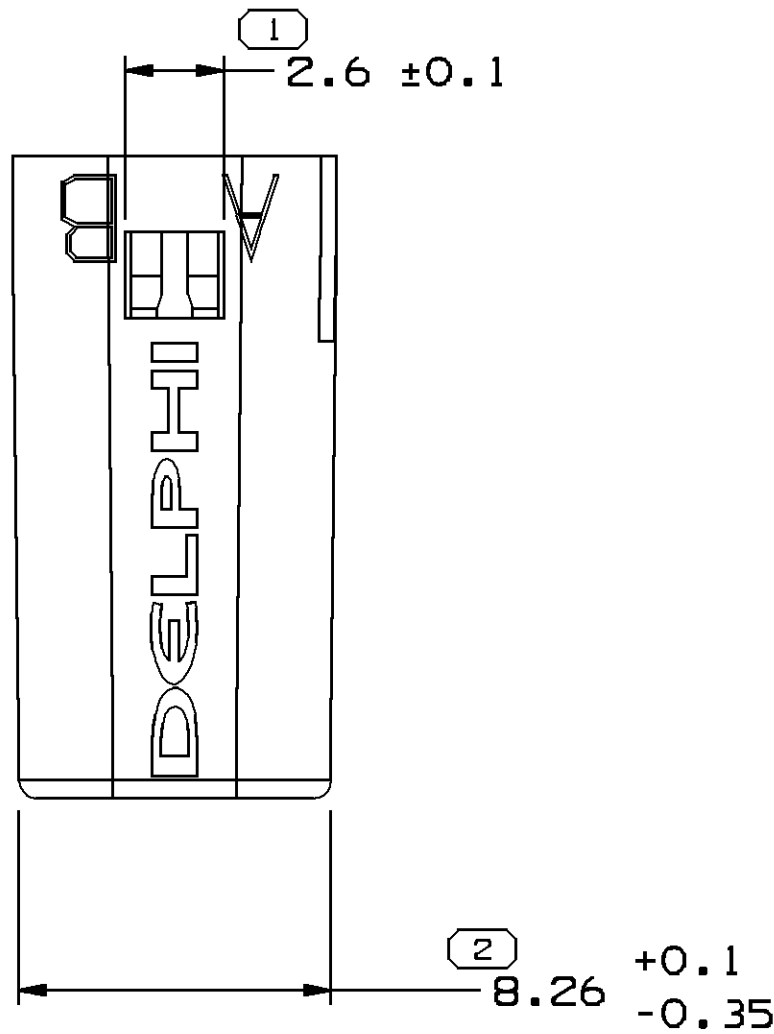
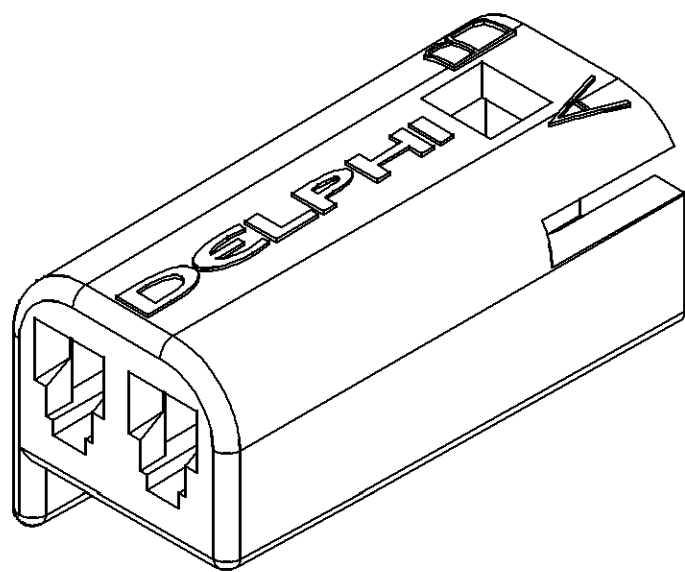


SYMBOL DEFINITION			MISSING NUMBERS
THE NUMBER INSIDE THE SYMBOL  CORRESPONDS TO THE NUMBER ON THE INSPECTION REPORT FOR THIS DRAWING/PART NUMBER	TOTAL NO. OF SYMBOLS ON DRAWING	13	
	LAST NO. USED	13	

DWG STATUS					ZONE	REVISION HISTORY			AUTH	DR	APVD 1	APVD 2
DATE	STG	REV	N/P	CHG								
25N099	R	01	-	-			ALL PARTS - REDRAWN TO PD			196858	CMP	GMC DN
170C01	R	02	-	-			ALL PARTS - ADDED OPTIONAL CONSTRUCTION & MATERIAL RECYCLING CODE NOTES & REVISED CAVITIES ID LOCATIONS			215985	EOV	EOV GMC
04SE02	R	03	-	-			ALL PARTS - SECONDARY TERMINAL LOCK NOTE WAS 12047664			230019	RVP	RVP GMC
23N005	R	04	-	-			ALL PARTS - ADDED NOTE 7			274632	BB	BB BG
30MR06	R	05	-	-			12059249 - MAT'L SPEC WAS M3592002			278565	GPS	FRG JGS



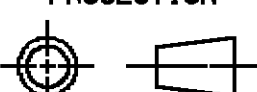

#### NOTES

- UNLESS OTHERWISE SPECIFIED AND/OR INDICATED:  
DIMENSIONS ARE TO FACE OF VIEW SHOWN AND AUTOMATICALLY ROUNDED BY COMPUTER FOR INSPECTION (SEE MATH MODEL FOR PRECISE DIMENSIONS). FOR ALL OTHER DIMENSIONS NOT SHOWN BUT REQUIRED FOR TOOL BUILD, SEE MATH MODEL FOR PRECISE TOOL PATH DATA.
- MATERIAL RECYCLING CODE PER ISO 11469. (2.3)X(0.1) CHARACTERS AS SHOWN TO BE LOCATED ON ANY EXTERIOR SURFACE. OPTIONAL CONSTRUCTION TO BE NO MATERIAL RECYCLING CODE.
- THIS PART IS NOT CONTROLLED FOR AUTOMATIC FEEDING.
- REFERENCE MATING COMPONENTS OR EQUIVALENT:  
CONNECTOR SEE CHART
- THIS PART ACCEPTS THE FOLLOWING COMPONENTS OR EQUIVALENT:  
TERMINAL 12047883  
MAX INSULATION CRIMP MUST BE LESS THAN 2.3 HIGH AND 2.7 WIDE.  
SECONDARY TERMINAL LOCK 15324070
- (2.3)X(0.1) DELPHI CORPORATE BRAND TO BE LOCATED ON ANY EXTERIOR SURFACE, PREFERABLY VISIBLE AT FINAL ASSEMBLY. OPTIONAL CONSTRUCTION TO BE "PED" OR NO LOGO.
- FOR MATING CONFIGURATION REQUIREMENTS, SEE PART NUMBER 13548762.

12059249	02	-	-	M3592024 PA66 HS IM CRM	12059250	0.583
12059247	A4	-	-	M3592025 PA66 HS IM GRA MD	12059248	0.583
12047662	A5	-	-	M3592001 PA66 HS IM BLK	12047663	0.583
PART NO	REV	N/P	STATUS	MATERIAL SPECIFICATION AND COLOR	MATING CONNECTOR	VOLUME CM³

(13) PROCESS SENSITIVE DIMENSION									
DIMENSIONS ENCLOSED IN ( ) INDICATE REFERENCE DIMENSIONS AND NO TOLERANCE LIMITS ARE ESTABLISHED									

DIMENSIONAL RANGE (MM)									
FROM TO	> 0 20	> 20 30	> 30 70	> 70 100	> 100 150	> 150 200	> 200 250	> 250 300	> 300 400
TOLERANCE UNLESS OTHERWISE SPECIFIED									
ANGULAR TOLERANCE #2°									

DWG TYPE		PART DRAWING	
STYLE			
VOLUME (CM <sup>3</sup> )		DISTR CODE	
SEE CHART		D	
UNLESS OTHERWISE SPECIFIED			
THIS DOCUMENT IS IN ACCORDANCE WITH ASME Y14.5M-1994 AS AMENDED BY THE 2018 GLOBAL DIMENSIONING AND TOLERANCING ADDENDUM - 1997. ALL GEOMETRIC TOLERANCES AND RELATED DATUMS APPLY RFS. RULE #1 (PERFECT FORM AT MMC) DOES NOT APPLY WHEN RELATIONSHIP BETWEEN FEATURES IS ESTABLISHED BY ORIENTATION OR LOCATION TOLERANCES. SEPARATE POSITION CALLOUTS MAY BE GAGED SEPARATELY, REGARDLESS OF DATUM REFERENCE.			
ALL DIMENSIONS ARE IN MILLIMETERS			
REFERENCE			
THIRD ANGLE PROJECTION		DO NOT SCALE	
		USE MATH DATA	
			

DELPHI				
DELPHI PACKARD ELECTRIC SYSTEMS WARREN, OH				
DR			DATE	
APVD1	C.MIRANDA		25N099	
APVD2	G.MACIAS		20JA00	
APVD3	D.NAVARRO		26JA00	
APVD4				
APVD5				
SUBSTANCES OF CONCERN AND RECYCLED CONTENT PER DELPHI 10949001				
MATERIAL				
SEE CHART				
DRAWING NAME				
TAXI CONN F M/P 150				
DRAWING NUMBER				
12059281				
SIZE	SCALE	FRAME NO	SHEET NO	STG
A1	5:1	1 OF 1	1 OF 1	R
				REV
				05
				N/P

## X-ON Electronics

Largest Supplier of Electrical and Electronic Components

*Click to view similar products for [Automotive Connectors](#) category:*

*Click to view products by [APTIV](#) manufacturer:*

Other Similar products are found below :

[003-018-000](#) [60403001](#) [60993906-B](#) [629515004020001](#) [M902-2131](#) [M902-2161](#) [72.330.1035.1](#) [73.353.4028.0](#) [F119300-B](#) [F166900](#)  
[F258300-B](#) [F358300-B](#) [F407400](#) [F444110](#) [F487000](#) [F509500B-B](#) [827153-1](#) [8N1515-32-24P](#) [9-1326729-8](#) [925474-1](#) [928905-1](#) [964562-4](#)  
[968782-1](#) [GT17SA-8DS-HU](#) [98891-1012](#) [98947-1016](#) [12004475-L](#) [12010290](#) [12010309-B](#) [12015454](#) [12020219-B](#) [12020308](#) [12041318-B](#)  
[12052225-L](#) [12052466](#) [12059125](#) [12064869](#) [12004327-B](#) [12010503-B](#) [12015308](#) [12015384](#) [12015909](#) [1-21030-1](#) [12041254](#) [12041318](#)  
[12047946-B](#) [12047957](#) [12047957-L](#) [12059473](#) [12066261](#)