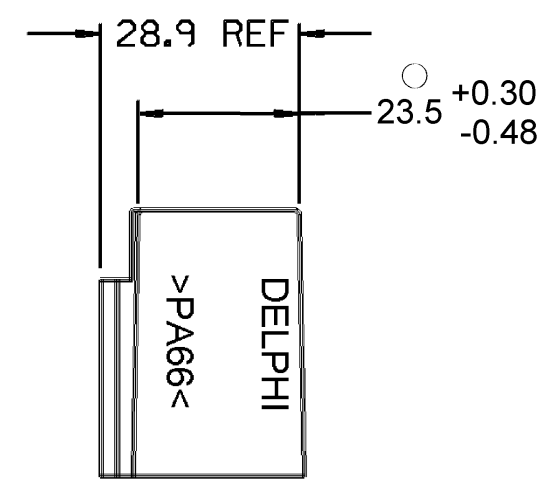
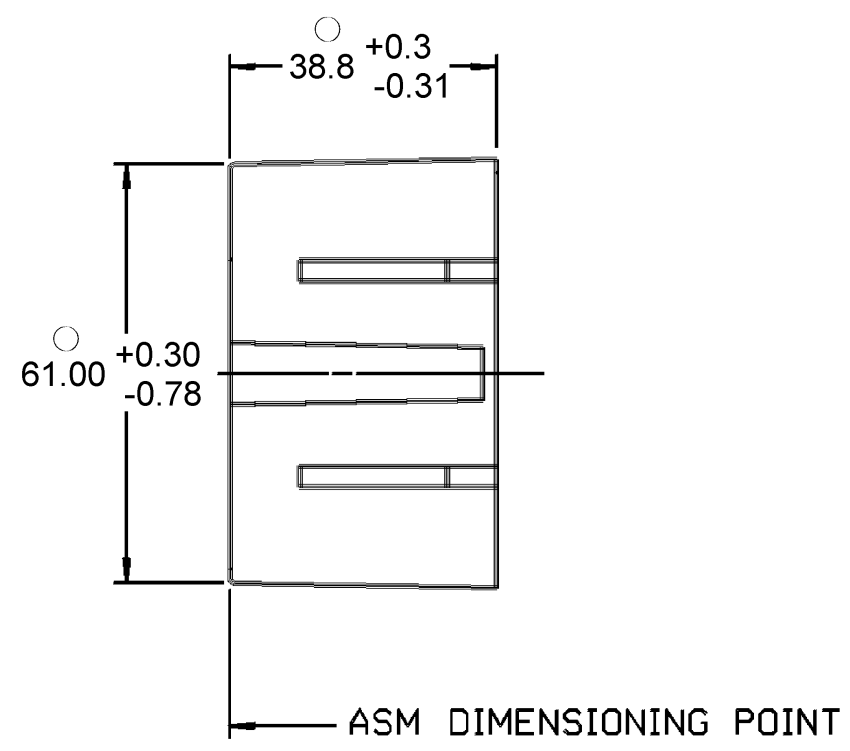
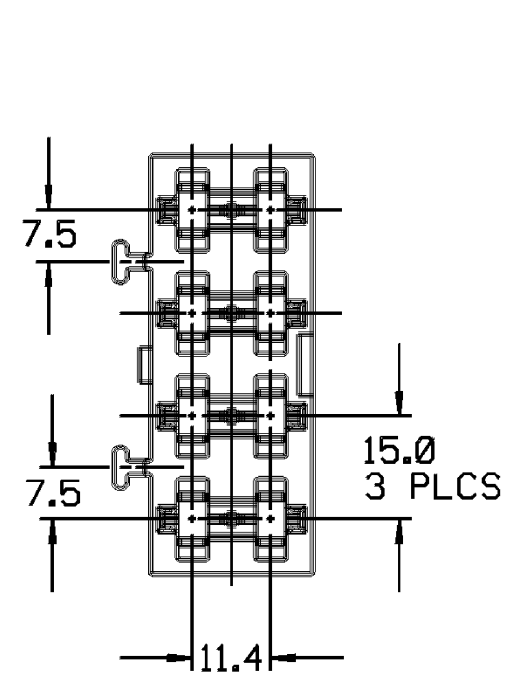


DWG STATUS					ZONE		REVISION HISTORY		AUTH	DR	APP	APP
DATE	STG	REV	IMP	CHG								
20MAY02	R	02	-	-				CLEARED REV COL & MAT'L SPEC WAS NYLON - TYPE 6 (BLACK) AND ADDED NOTES 6, LOGO NOTE & RECYCLE CODE NOTE	225192	OGG	OGG	AL
05APR06	R	02	AA	-				DIM 61.00 +0.30/-0.78 WAS 61.00 +/-0.15 DIM 23.5 +0.30/-0.48 WAS 23.5 +/-0.3 AND DIM 38.8 +0.3/-0.31 WAS 38.8 +/-0.3	279380	JBD	JMM	EST



- NOTES**
1. DIMENSIONS ARE TO FACE OF VIEW SHOWN, UNLESS OTHERWISE INDICATED.
 2. TERMINAL CAVITIES ARE IDENTICAL, EXCEPT AS SHOWN.
 3. MOUNTING RAILS ARE IDENTICAL.
 4. MOUNTING RAIL SLOTS ARE IDENTICAL.
 5. *RAIL SLOT DIMENSION MAY READ SMALLER AT THE BOTTOM OF PART THAN AT TOP BECAUSE OF PART BOW.
 6. THIS PART ACCEPTS THE FOLLOWING COMPONENTS OR EQUIVALENTS: CAVITIES TO ACCEPT 100480 AND 100400 TERMINALS.
 7. (2.3 X (0.1) RAISED DELPHI CORPORATE BRAND TO BE LOCATED ON ANY EXTERIOR SURFACE, PREFERABLY VISIBLE AT FINAL ASSEMBLY. OPTIONAL CONSTRUCTION TO BE "PED" OR NO LOGO.
 8. MATERIAL RECYCLING CODE >PA66< PER SAE J1344. (2.3 X (0.1) RAISED CHARACTERS AS SHOWN TO BE LOCATED ON ANY EXTERIOR SURFACE. OPTIONAL CONSTRUCTION TO BE NO MATERIAL RECYCLING CODE.

DWG TYPE: PART DRAWING

STYLE: []

VOLUME (CM): [] DISTN CODE: D

ROLLING: 6900

UNLESS OTHERWISE SPECIFIED:
THIS DRAWING IS IN ACCORDANCE WITH ASME Y14.5-2001, AS APPLICABLE.
IF THE USE OF UNLESS OTHERWISE SPECIFIED IS REQUIRED, IT SHALL BE INDICATED BY A NOTE.
SPECIFIC TOLERANCES AND RELATED DATUMS SHALL BE AS SHOWN IN THE DRAWING.
THE USER OF THIS DRAWING SHALL BE RESPONSIBLE FOR THE CORRECT INTERPRETATION OF THE DRAWING.
DIMENSIONS SHALL BE IN MILLIMETERS UNLESS OTHERWISE SPECIFIED.
DIMENSIONS SHALL BE IN MILLIMETERS UNLESS OTHERWISE SPECIFIED.

REFERENCE: 12052472 "D" SIZE

THIRD ANGLE PROJECTION

DELPHI
DELPHI PACKARD ELECTRIC SYSTEMS
WARREN, OHIO

DR: K. STURGEON	DATE: 30NOB04
APP'D: F. HESTON	03DEB04
APP'D: K. PHILLIPS	05DEB04
APP'D: []	[]
APP'D: []	[]

SUBSTANCES OF CONCERN AND RECYCLED CONTENT PER DELPHI A 5084001

MATERIAL: M3592001 PA66 IM HS BLK

DRAWING NAME: BASE FUSBLK PAC/ON III

DRAWING NUMBER: 12052472

SCALE: NONE

FRAME NO: 1 OF 1

SHEET NO: 1 OF 1

REV: R 02

APP: AA

X-ON Electronics

Largest Supplier of Electrical and Electronic Components

Click to view similar products for [Automotive Connectors](#) category:

Click to view products by [APTIV](#) manufacturer:

Other Similar products are found below :

[003-018-000](#) [60403001](#) [60993906-B](#) [629515004020001](#) [M902-2131](#) [M902-2161](#) [72.330.1035.1](#) [73.353.4028.0](#) [F119300-B](#) [F166900](#)
[F258300-B](#) [F358300-B](#) [F407400](#) [F444110](#) [F487000](#) [F509500B-B](#) [827153-1](#) [8N1515-32-24P](#) [9-1326729-8](#) [925474-1](#) [928905-1](#) [964562-4](#)
[968782-1](#) [GT17SA-8DS-HU](#) [98891-1012](#) [98947-1016](#) [12004475-L](#) [12010290](#) [12010309-B](#) [12015454](#) [12020219-B](#) [12020308](#) [12041318-B](#)
[12052225-L](#) [12052466](#) [12059125](#) [12064869](#) [12004327-B](#) [12010503-B](#) [12015308](#) [12015384](#) [12015909](#) [1-21030-1](#) [12041254](#) [12041318](#)
[12047946-B](#) [12047957](#) [12047957-L](#) [12059473](#) [12066261](#)