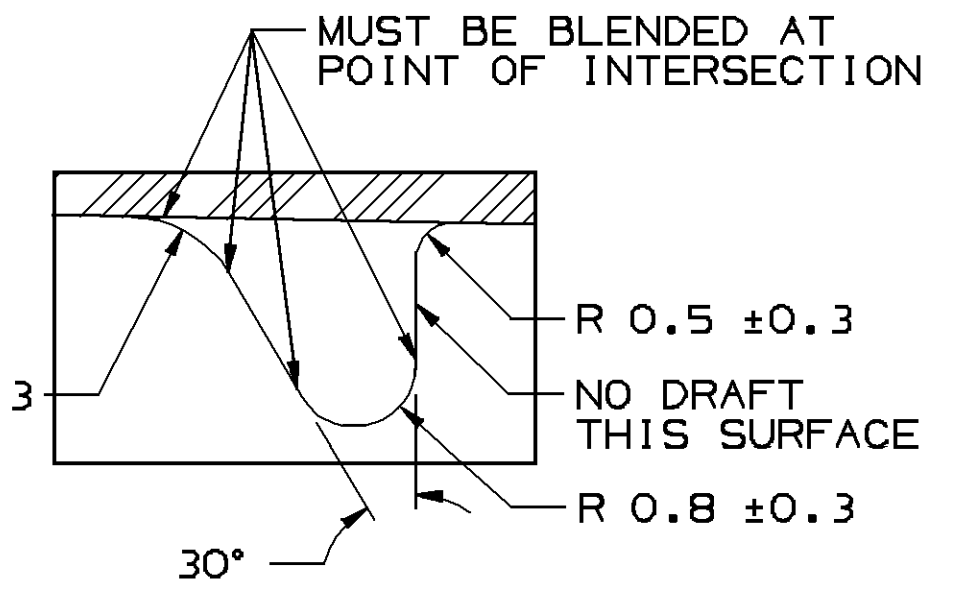
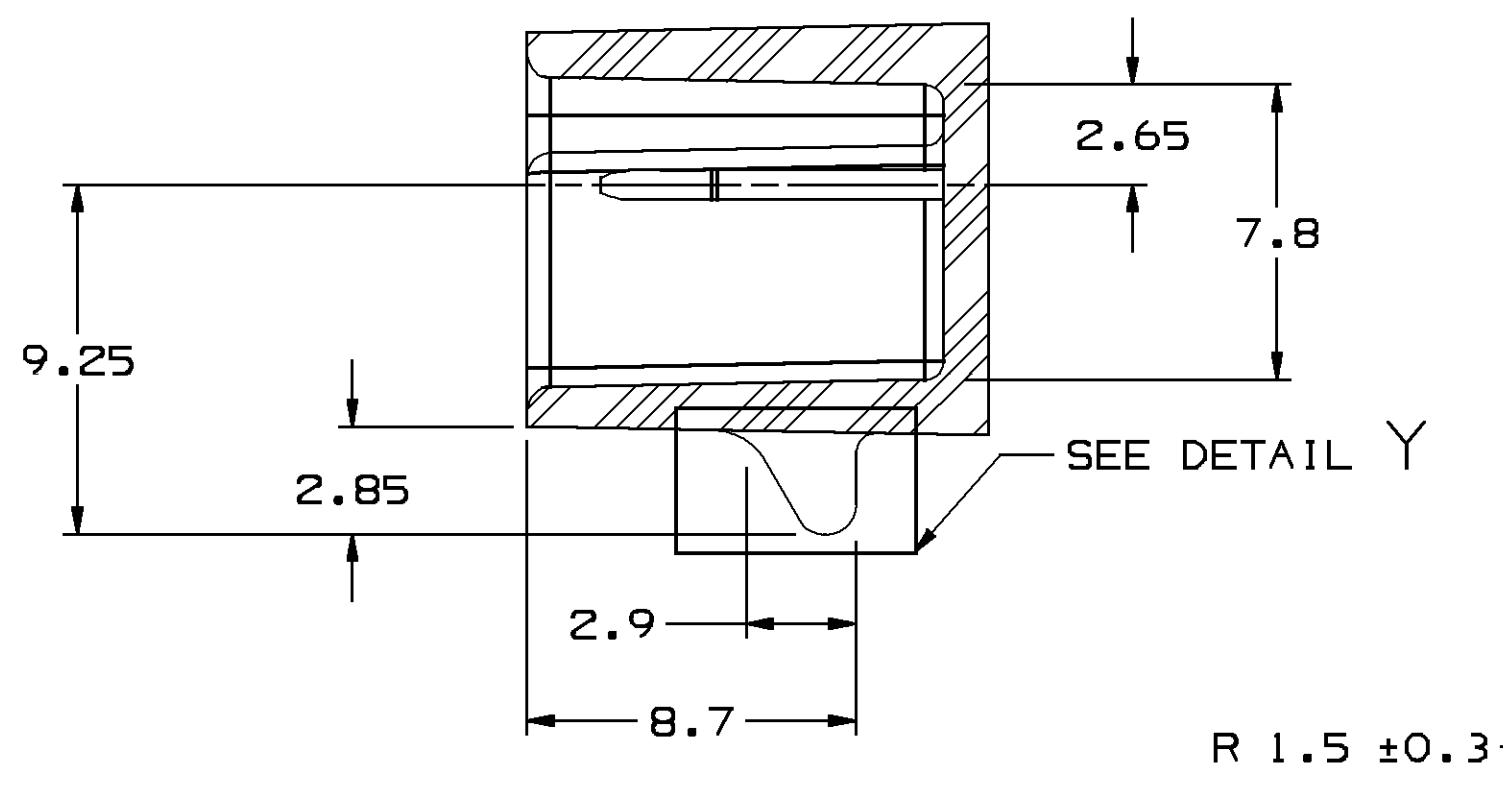
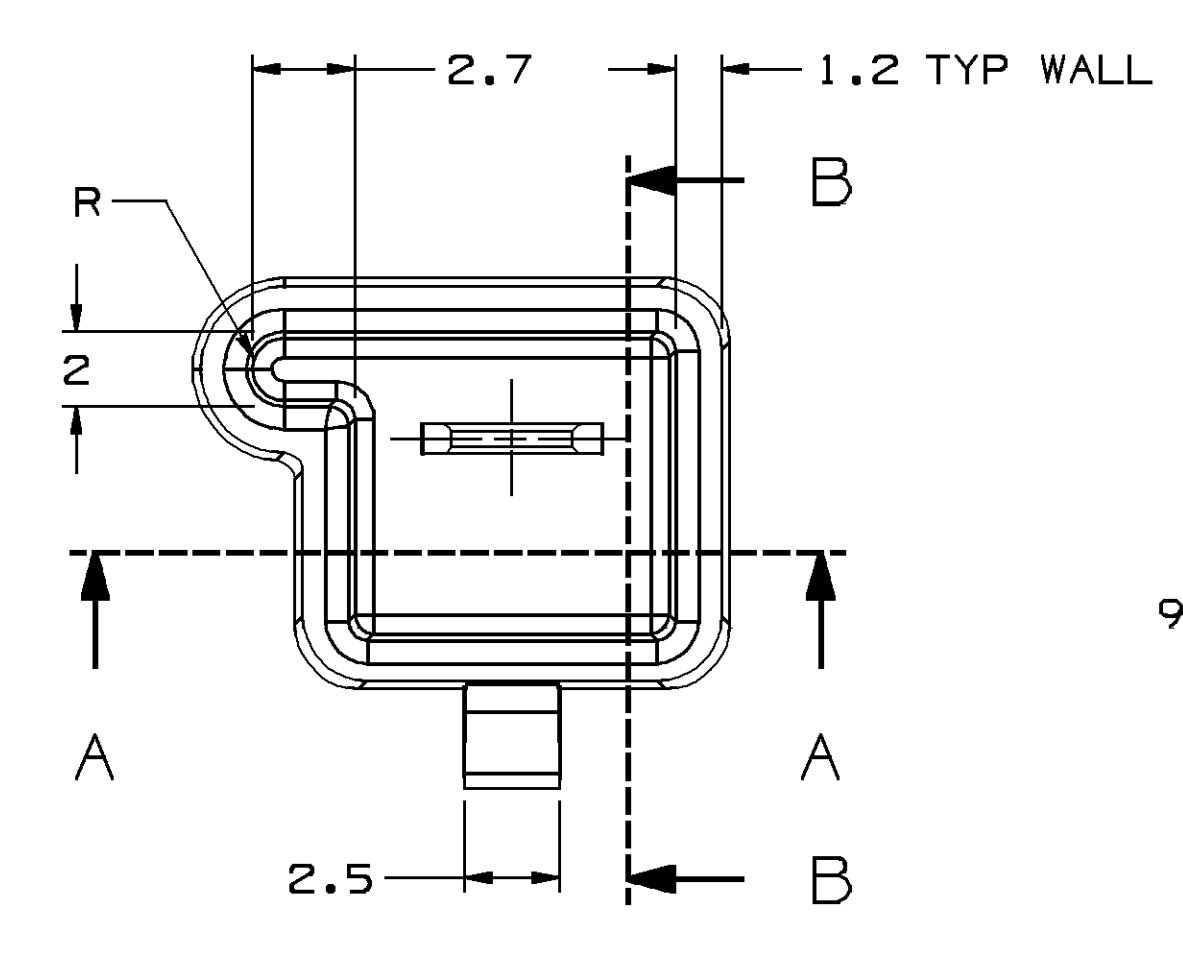


● THESE DIMENSIONS ARE CRITICAL TO THE MECHANICAL AND ELECTRICAL PERFORMANCE OF THE CONNECTION SYSTEM.

MATERIAL SPECIFICATIONS

- RECOMMENDED
- BASE METAL - CDA-210, EXTRA SPRING TEMPER
 - TIN PLATING (WHERE APPLICABLE TO 125°C MAX CONTINUOUS USAGE): 0.0050 \pm 0.0025 MM (200 \pm 100 μ IN) ELECTROPLATED TIN.
 - USAGE OF PLATING TYPES OTHER THAN RECOMMENDED MUST BE APPROVED BY DELPHI PACKARD ELECTRIC SYSTEMS ENGINEERING.
- MINIMUMS
- ELECTRICAL CONDUCTIVITY - $\geq 28\%$ IACS AT 20 °C. USE OF A MATERIAL WITH CONDUCTIVITY $< 28\%$ IACS MUST BE APPROVED BY PACKARD ELECTRIC MATERIALS ENGINEERING.
 - TENSILE STRENGTH - 430 - 480 MPa
 - UNDERPLATING FOR TIN PLATING - FOR BASE MATERIALS CONTAINING 10% OR MORE ZINC, AN UNDERPLATE OF COPPER 0.0025 MM (100 μ IN) MINIMUM THICK IS REQUIRED.
 - PROCESSING LUBRICANT - ANY PROCESSING LUBRICANT REMAINING ON TERMINALS MUST NOT VARNISH OR DEGRADE THE ELECTRICAL PERFORMANCE OF THE CONNECTION UP TO A MAXIMUM TEMPERATURE OF 150°C. PROCESSING LUBRICANTS MUST BE APPROVED BY DELPHI PACKARD ELECTRIC SYSTEMS ENGINEERING.

MATING BLADE INFORMATION

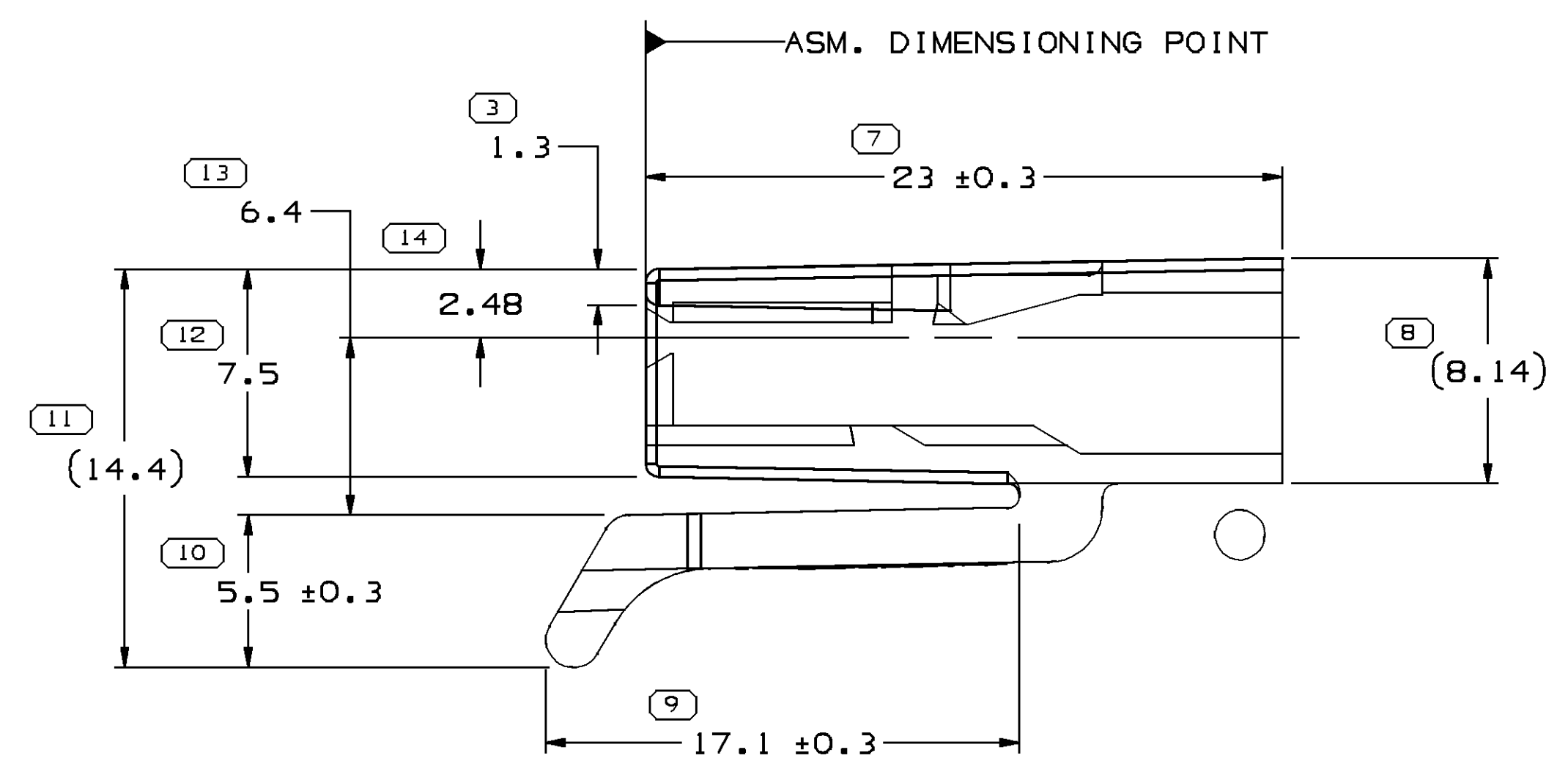
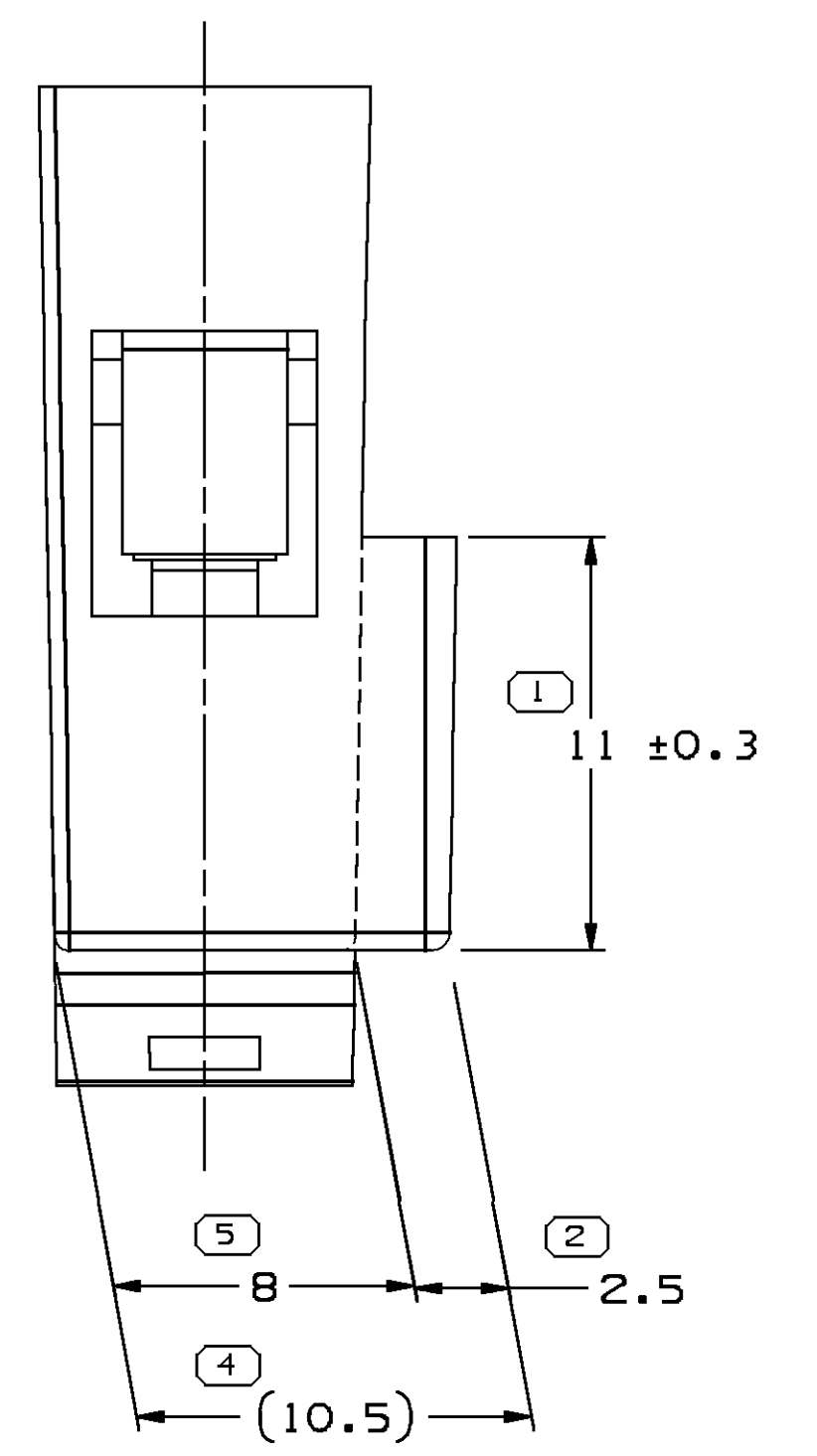
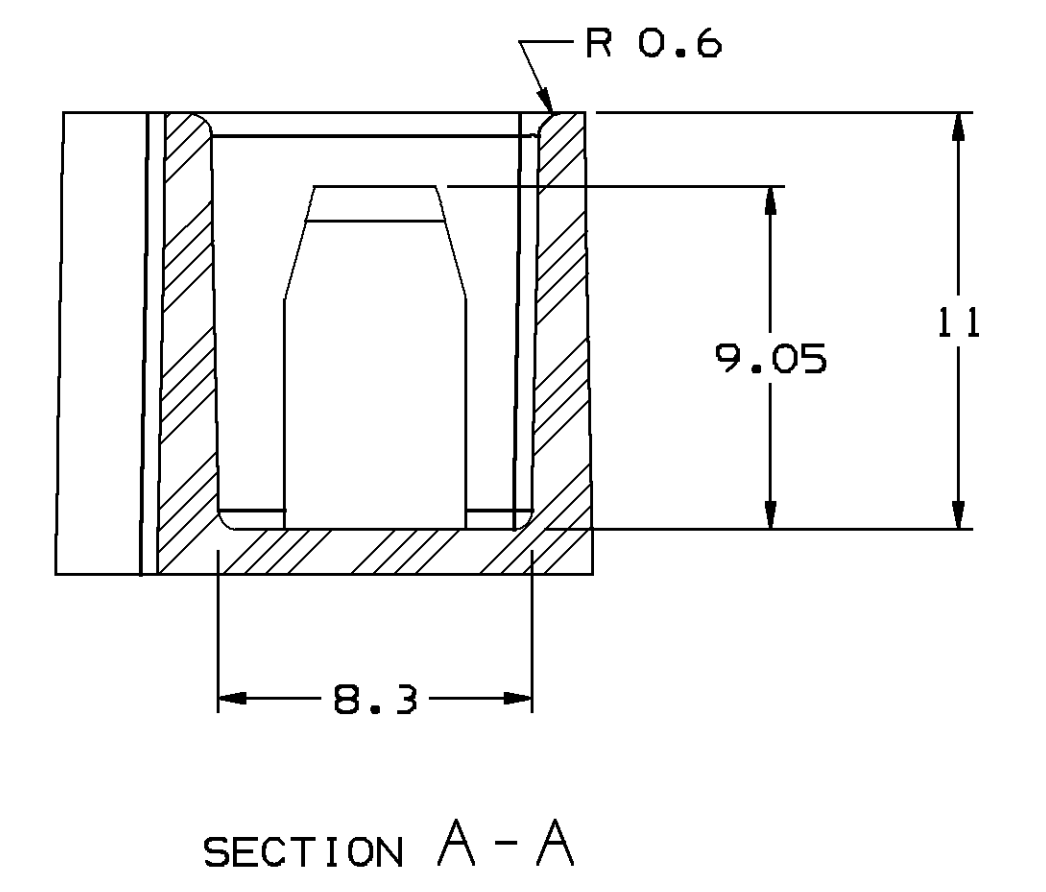


DETAIL Y
SCALE 10:1

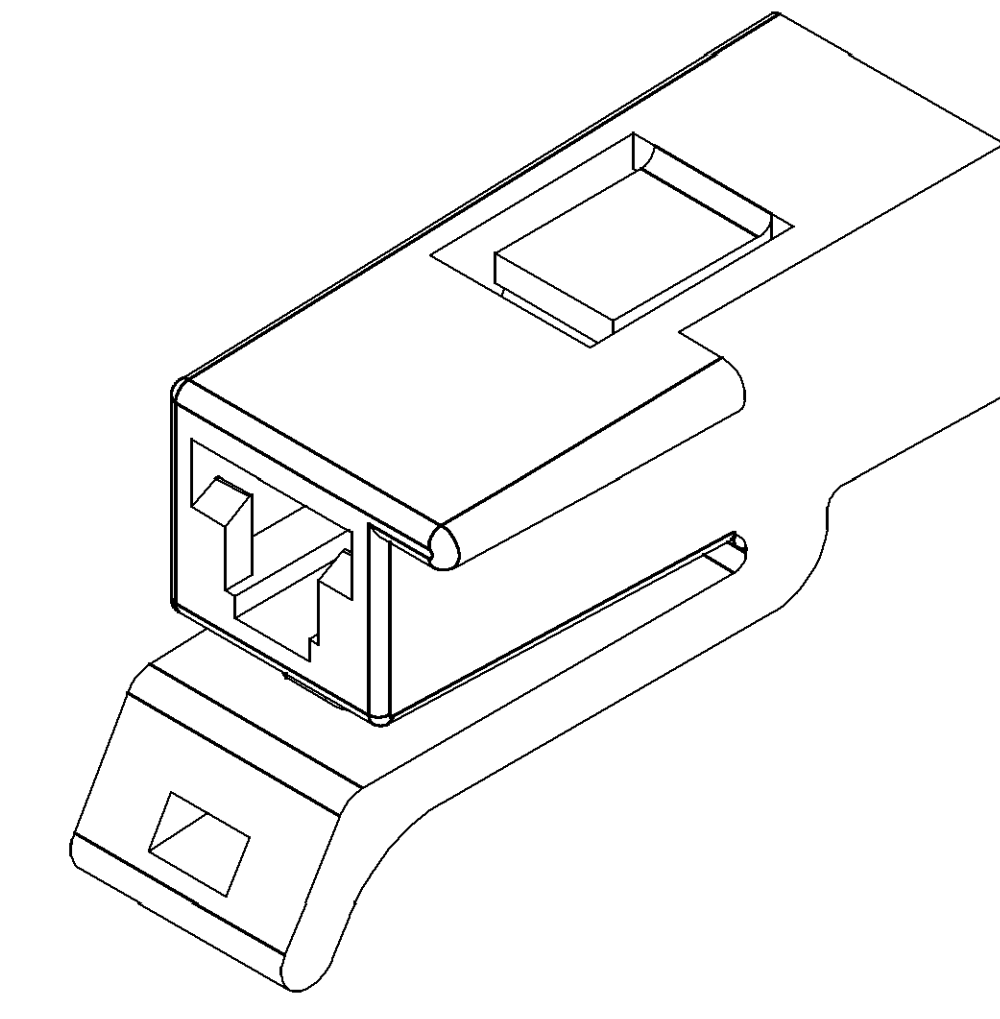
MATING CONNECTOR INFORMATION

RECOMMENDED MATERIAL - UNMODIFIED POLYESTER

- NOTES
- UNLESS OTHERWISE SPECIFIED AND/OR INDICATED: DIMENSIONS ARE TO FACE OF VIEW SHOWN AND AUTOMATICALLY ROUNDED BY COMPUTER FOR INSPECTION (SEE MATH MODEL FOR PRECISE DIMENSIONS). FOR ALL OTHER DIMENSIONS NOT SHOWN BUT REQUIRED FOR TOOL BUILD, SEE MATH MODEL FOR PRECISE TOOL PATH DATA. ALL RADIUS 0.5 DRAFT IS 1° MAX ON ALL OUTSIDE SURFACES.



- NOTES
- UNLESS OTHERWISE SPECIFIED AND/OR INDICATED: DIMENSIONS ARE TO FACE OF VIEW SHOWN AND AUTOMATICALLY ROUNDED BY COMPUTER FOR INSPECTION (SEE MATH MODEL FOR PRECISE DIMENSIONS). FOR ALL OTHER DIMENSIONS NOT SHOWN BUT REQUIRED FOR TOOL BUILD, SEE MATH MODEL FOR PRECISE TOOL PATH DATA.
 - MATERIAL RECYCLING CODE PER ISO 11469. (2.3)X(0.1) CHARACTERS AS SHOWN TO BE LOCATED ON ANY EXTERIOR SURFACE. OPTIONAL CONSTRUCTION TO BE NO MATERIAL RECYCLING CODE.
 - THIS PART IS NOT CONTROLLED FOR AUTOMATIC FEEDING.
 - REFERENCE MATING COMPONENTS OR EQUIVALENT: CONNECTOR 12059885
 - (2.3)X(0.1) DELPHI CORPORATE BRAND TO BE LOCATED ON ANY EXTERIOR SURFACE, PREFERABLY VISIBLE AT FINAL ASSEMBLY. OPTIONAL CONSTRUCTION TO BE PED OR NO LOGO.



SYMBOL DEFINITION				TOTAL NO OF INSPECTIONS REQUIRED	MISSING SYMBOLS
A	DIMENSION WITHOUT AN INSPECTION REPORT SYMBOL	DOES NOT REQUIRE INSPECTION. IT MAY BE CONTROLLED ON THE INDIVIDUAL COMPONENT DRAWING.	14	NO MISSING SYMBOL NUMBER	
			LAST NO. USED	14	

DWG STATUS				ZONE		REVISION HISTORY		AUTH	DR	AP/VD
DATE	STD	REV	N/P	CHG						
27FE06	R	B3	-	-		CLEARED REV COL & CREATED PART DRAWING	277643	ACB	FKV	B06
18M06	R	B4	-	-		REMOVED DRAFT ON TOP SURFACE BEHIND LOCK AND REMOVED BLENDS TO MAKE MODEL MATCH PART	280075	RH	RH	B06

DIMENSIONAL RANGE (MM)	TOLERANCE UNLESS OTHERWISE SPECIFIED	SHORT ET
FROM > 0	> 20	> 30
TO	20	30
	30	70
	70	100
	100	150
	150	200
	200	250
	250	300
	300	400
	400	500
	500	600
	600	800
	800	1000
	1000	1500
	1500	2000
	2000	3000
	3000	4000
	4000	5000
	5000	6000
	6000	8000
	8000	10000
	10000	15000
	15000	20000
	20000	30000
	30000	40000
	40000	50000
	50000	60000
	60000	80000
	80000	100000
	100000	150000
	150000	200000
	200000	300000
	300000	400000
	400000	500000
	500000	600000
	600000	800000
	800000	1000000
	1000000	1500000
	1500000	2000000
	2000000	3000000
	3000000	4000000
	4000000	5000000
	5000000	6000000
	6000000	8000000
	8000000	10000000
	10000000	15000000
	15000000	20000000
	20000000	30000000
	30000000	40000000
	40000000	50000000
	50000000	60000000
	60000000	80000000
	80000000	100000000
	100000000	150000000
	150000000	200000000
	200000000	300000000
	300000000	400000000
	400000000	500000000
	500000000	600000000
	600000000	800000000
	800000000	1000000000
	1000000000	1500000000
	1500000000	2000000000
	2000000000	3000000000
	3000000000	4000000000
	4000000000	5000000000
	5000000000	6000000000
	6000000000	8000000000
	8000000000	10000000000
	10000000000	15000000000
	15000000000	20000000000
	20000000000	30000000000
	30000000000	40000000000
	40000000000	50000000000
	50000000000	60000000000
	60000000000	80000000000
	80000000000	100000000000
	100000000000	150000000000
	150000000000	200000000000
	200000000000	300000000000
	300000000000	400000000000
	400000000000	500000000000
	500000000000	600000000000
	600000000000	800000000000
	800000000000	1000000000000
	1000000000000	1500000000000
	1500000000000	2000000000000
	2000000000000	3000000000000
	3000000000000	4000000000000
	4000000000000	5000000000000
	5000000000000	6000000000000
	6000000000000	8000000000000
	8000000000000	10000000000000
	10000000000000	15000000000000
	15000000000000	20000000000000
	20000000000000	30000000000000
	30000000000000	40000000000000
	40000000000000	50000000000000
	50000000000000	60000000000000
	60000000000000	80000000000000
	80000000000000	100000000000000
	100000000000000	150000000000000
	150000000000000	200000000000000
	200000000000000	300000000000000
	300000000000000	400000000000000
	400000000000000	500000000000000
	500000000000000	600000000000000
	600000000000000	800000000000000
	800000000000000	1000000000000000
	1000000000000000	1500000000000000
	1500000000000000	2000000000000000
	2000000000000000	3000000000000000
	3000000000000000	4000000000000000
	4000000000000000	5000000000000000
	5000000000000000	6000000000000000
	6000000000000000	8000000000000000
	8000000000000000	10000000000000000
	10000000000000000	15000000000000000
	15000000000000000	20000000000000000
	20000000000000000	30000000000000000
	30000000000000000	40000000000000000
	40000000000000000	50000000000000000
	50000000000000000	60000000000000000
	60000000000000000	80000000000000000
	80000000000000000	100000000000000000
	100000000000000000	150000000000000000
	150000000000000000	200000000000000000
	200000000000000000	300000000000000000
	300000000000000000	400000000000000000
	400000000000000000	500000000000000000
	500000000000000000	600000000000000000
	600000000000000000	800000000000000000
	800000000000000000	1000000000000000000
	1000000000000000000	1500000000000000000
	1500000000000000000	2000000000000000000
	2000000000000000000	3000000000000000000
	3000000000000000000	4000000000000000000
	4000000000000000000	5000000000000000000
	5000000000000000000	6000000000000000000
	6000000000000000000	8000000000000000000
	8000000000000000000	10000000000000000000
	10000000000000000000	15000000000000000000
	15000000000000000000	20000000000000000000
	20000000000000000000	30000000000000000000
	30000000000000000000	40000000000000000000
	40000000000000000000	50000000000000000000
	50000000000000000000	60000000000000000000
	60000000000000000000	80000000000000000000
	80000000000000000000	100000000000000000000
	100000000000000000000	150000000000000000000
	150000000000000000000	200000000000000000000
	200000000000000000000	300000000000000000000
	300000000000000000000	400000000000000000000
	400000000000000000000	500000000000000000000
	500000000000000000000	600000000000000000000
	600000000000000000000	800000000000000000000
	800000000000000000000	1000000000000000000000
	1000000000000000000000	1500000000000000000000
	1500000000000000000000	2000000000000000000000
	2000000000000000000000	3000000000000000000000
	3000000000000000000000	4000000000000000000000
	4000000000000000000000	5000000000000000000000
	5000000000000000000000	6000000000000000000000
	6000000000000000000000	8000000000000000000000
	8000000000000000000000	10000000000000000000000
	10000000000000000000000	15000000000000000000000
	15000000000000000000000	20000000000000000000000
	20000000000000000000000	30000000000000000000000
	30000000000000000000000	40000000000000000000000
	40000000000000000000000	50000000000000000000000
	50000000000000000000000	60000000000000000000000
	60000000000000000000000	80000000000000000000000
	80000000000000000000000	100000000000000000000000
	100000000000000000000000	150000000000000000000000
	150000000000000000000000	200000000000000000000000
	200000000000000000000000	300000000000000000000000
	300000000000000000000000	400000000000000000000000
	400000000000000000000000	500000000000000000000000
	500000000000000000000000	600000000000000000000000
	600000000000000000000000	800000000000000000000000
	800000000000000000000000	1000000000000000000000000
	1000000000000000000000000	1500000000000000000000000
	1500000000000000000000000	2000000000000000000000000
	2000000000000000000000000	3000000000000000000000000
	3000000000000000000000000	4000000000000000000000000
	4000000000000000000000000	5000000000000000000000000
	5000000000000000000000000	6000000000000000000000000</

X-ON Electronics

Largest Supplier of Electrical and Electronic Components

Click to view similar products for [Automotive Connectors](#) category:

Click to view products by [APTIV](#) manufacturer:

Other Similar products are found below :

[003-018-000](#) [60403001](#) [60993906-B](#) [629515004020001](#) [M902-2131](#) [M902-2161](#) [72.330.1035.1](#) [73.353.4028.0](#) [F119300-B](#) [F166900](#)
[F258300-B](#) [F358300-B](#) [F407400](#) [F444110](#) [F487000](#) [F509500B-B](#) [827153-1](#) [8N1515-32-24P](#) [9-1326729-8](#) [925474-1](#) [928905-1](#) [964562-4](#)
[968782-1](#) [GT17SA-8DS-HU](#) [98891-1012](#) [98947-1016](#) [12004475-L](#) [12010290](#) [12010309-B](#) [12015454](#) [12020219-B](#) [12020308](#) [12041318-B](#)
[12052225-L](#) [12052466](#) [12059125](#) [12064869](#) [12004327-B](#) [12010503-B](#) [12015308](#) [12015384](#) [12015909](#) [1-21030-1](#) [12041254](#) [12041318](#)
[12047946-B](#) [12047957](#) [12047957-L](#) [12059473](#) [12066261](#)