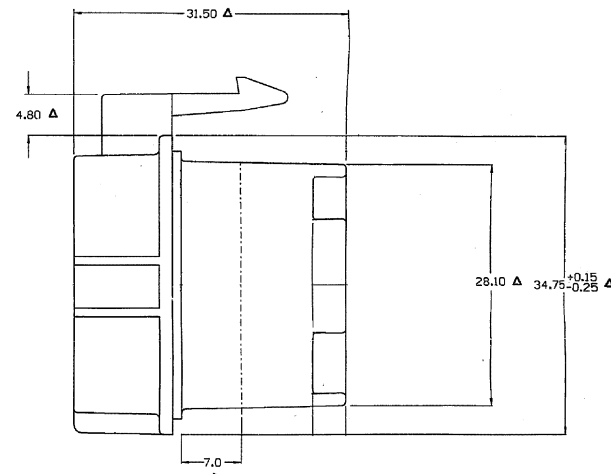
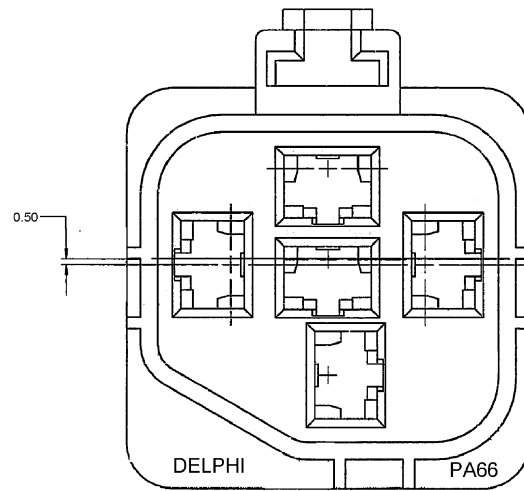
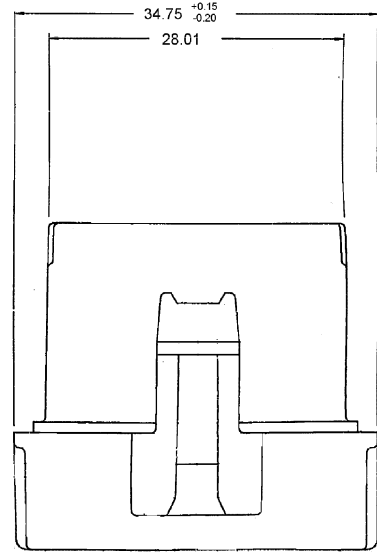
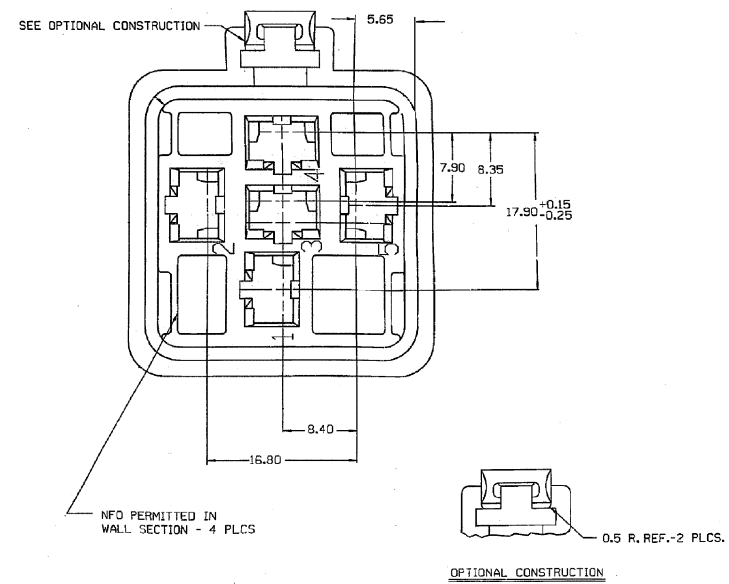


DELPHI PACKARD ELECTRIC SYSTEMS  
WARREN, OHIO 44486

DWG STATUS				REVISION HISTORY				DATE	BY	CHK	APPV
DATE	STG	REV	CHK	N/P	ZONE	DATE	BY	CHK	APPV		
31JAO2	R	G4	-	-		CREATED PART DRAWING AND MATL SPEC WAS R0067547 NYLON 6 - BLK	219215	OGG	OGG	ET	
18MR02	R	008	-	-		MATL SPEC WAS M3596002-PA6	222835	ESF	ESF	JH	



THIS OUTSIDE SURFACE MUST BE FREE OF DEFECTS FOR SEALING, ALL AROUND FOR DISTANCE SHOWN.



- NOTES**
1. ALL RADII 0.40 UNLESS OTHERWISE SPECIFIED.
  2. DIMENSIONS ARE TO FACE OF VIEW SHOWN, UNLESS OTHERWISE INDICATED.
  3. 1° DRAFT ON ALL OUTSIDE SURFACES, UNLESS OTHERWISE SPECIFIED.
  4. CAVITIES ARE IDENTICAL.
  5. CAVITIES TO ACCEPT 12033997 TERMINAL OR EQUIVALENT.
  6. MATING SHROUD REQUIREMENTS - 12068665.
  7. PART IS TO ACCEPT 12065664 CABLE SEAL OR EQUIVALENT.
  8. CENTERLINE OF BLADE TO CENTERLINE OF SEAL IS 2.10.
  9. CONNECTOR TO ACCEPT CPA 12052834 OR EQUIVALENT.
  10. THIS PART IS CONTROLLED FOR AUTOMATIC FEEDING AS DENOTED ON DRAWING WITH Δ.
  11. ALL TOOLS BUILT AFTER 2-1-90 TO BE BUILT TO OPTIONAL CONSTRUCTION.
  12. (2.3)(0.1) RAISED DELPHI CORPORATE BRAND TO BE LOCATED ON ANY EXTERIOR SURFACE, PREFERABLY VISIBLE AT FINAL ASSEMBLY. OPTIONAL CONSTRUCTION TO BE "FED" OR NO LOGO.
  13. MATERIAL RECYCLE CODE "PA66" PER SAE J1344 (2.3)(0.1) RAISED CHARACTERS AS SHOWN TO BE LOCATED ON ANY EXTERIOR SURFACE. OPTIONAL CONSTRUCTION TO BE NO MATERIAL RECYCLE CODE.

<b>DELPHI</b> Automotive Systems		TOLERANCE UNLESS OTHERWISE SPECIFIED: DIMENSIONS: 3 DECIMAL PLACES ANGLES: 2 DP	
MATERIAL SPEC M3592001 PA66 IM HS BLK		SUBSTANCES OF CONCERN AND RECYCLED CONTENT PER DELPHI - A 10949001	
<b>PART DRAWING</b>			
CODE NUMBER: 6900	DWG DATE: 180284	SCALE: 4:1	DISTR CODE: <b>D</b>
DC SPEC:	STYLE:	UNLESS OTHERWISE SPECIFIED: THIS DOCUMENT IS IN ACCORDANCE WITH ASME Y14.5M - 1994 AS AMENDED BY THE 0M GLOBAL DIMENSIONING AND TOLERANCING ADDENDUM - 1992. ALL DIMENSIONAL TOLERANCES AND RELATED DATUMS APPLY. RULE #1 (PREFER FORM AT MMC) DOES NOT APPLY WHEN RELATIONSHIP BETWEEN FEATURES IS ESTABLISHED BY ORIENTATION OR LOCATION TOLERANCES. SEPARATE POSITION CALLOUTS MAY BE GAGED SEPARATELY REGARDLESS OF DATUM REFERENCES.	
PART GEOMETRY 2D PLANAR	REFERENCE	DR	DATE
 CHANGE RESTRICTED NO MANUAL CHANGES	DO NOT SCALE	APV01 D. GOMEZ	31JAO2
	 METRIC UNLESS OTHERWISE SPECIFIED ALL DIMENSIONS ARE IN MILLIMETERS	APV02 D. GOMEZ	31JAO2
		APV03 E. TRACEY	04FE02
		APV04	
		APV05	
DRAWING NAME <b>CONN 5F M/P 630 P2S</b>			
SHEET NUMBER 1 OF 1	DRAWING NUMBER 12065662	DWG STATUS R 008	SIZE AO

## X-ON Electronics

Largest Supplier of Electrical and Electronic Components

*Click to view similar products for [Automotive Connectors](#) category:*

*Click to view products by [APTIV](#) manufacturer:*

Other Similar products are found below :

[003-018-000](#) [60403001](#) [60993906-B](#) [629515004020001](#) [M902-2131](#) [M902-2161](#) [72.330.1035.1](#) [73.353.4028.0](#) [F119300-B](#) [F166900](#)  
[F258300-B](#) [F358300-B](#) [F407400](#) [F444110](#) [F487000](#) [F509500B-B](#) [827153-1](#) [8N1515-32-24P](#) [9-1326729-8](#) [925474-1](#) [928905-1](#) [964562-4](#)  
[968782-1](#) [GT17SA-8DS-HU](#) [98891-1012](#) [98947-1016](#) [12004475-L](#) [12010290](#) [12010309-B](#) [12015454](#) [12020219-B](#) [12020308](#) [12041318-B](#)  
[12052225-L](#) [12052466](#) [12059125](#) [12064869](#) [12004327-B](#) [12010503-B](#) [12015308](#) [12015384](#) [12015909](#) [1-21030-1](#) [12041254](#) [12041318](#)  
[12047946-B](#) [12047957](#) [12047957-L](#) [12059473](#) [12066261](#)