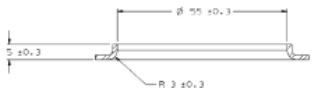
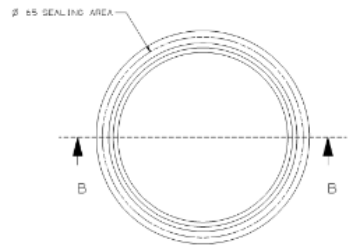
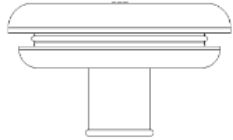
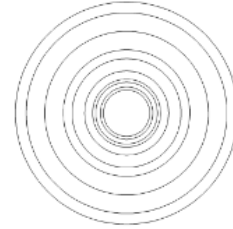
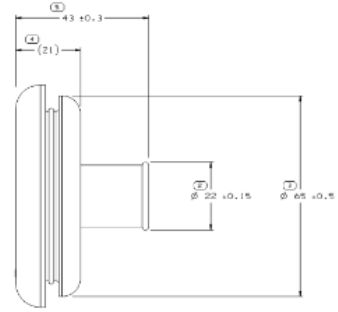
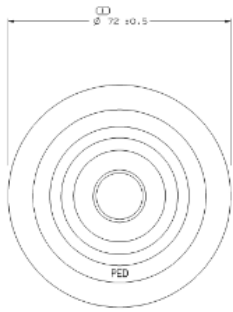
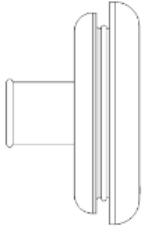
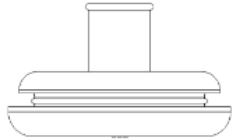


SYMBOL DEFINITION		MISSING SYMBOLS		REVISED		REVISION HISTORY		APPN	DATE
A DIMENSION WITHOUT AN INSPECTION REPORT SYMBOL (□) DOES NOT REQUIRE INSPECTION. IT MAY BE CONTROLLED ON THE INDIVIDUAL COMPONENT DRAWING.	TOTAL NO OF INSPECTIONS REQUIRED	NO MISSING SYMBOL NUMBER	APPROV	BY	DATE	DESCRIPTION	BY	DATE	DESCRIPTION
	5								
	LAST NO. USED								
	5								



SECTION B-B  
MOUNTING HOLE INFORMATION  
SCALE 2:1



- NOTES:
- UNLESS OTHERWISE SPECIFIED AND/OR INDICATED, DIMENSIONS ARE TO FACE OF VIEW SHOWN AND AUTOMATICALLY ROUNDED BY COMPUTER FOR INSPECTION. (SEE MATH MODEL FOR PRECISE DIMENSION) FOR ALL OTHER DIMENSIONS NOT SHOWN, BUT REQUIRED FOR TOOL BUILD, SEE MATH MODEL FOR PRECISE TOOL PATH DATA.
  - THIS ORGNET TO BE USED WITH HARNESS SINGLE SMOOTH TAPE WRAPPED USING 3 MIL TAPE HAVING NO SLITS ON EDGES.
  - PART IS SYMMETRICAL ABOUT CENTERLINE, EXCEPT AS NOTED.
  - REFERENCE QUALITOND PART NUMBER 8201 9-01070.
  - THIS PART IS NOT CONTROLLED FOR AUTOMATIC FEEDING.
  - AS 31X(0,1) DELPHI CORPORATE BRAND TO BE LOCATED ON ANY EXTERIOR SURFACE, PREFERABLY VISIBLE AT FINAL ASSEMBLY. OPTIONAL CONSTRUCTION TO BE "PED".

MAXIMUM ALLOWABLE DIMENSION OF STRETCHED ORGNET REEL WHEN USING A 4 MILL SPEAKER

PART DRAWING	
DATE	REV
DATE OF 25,802	1D
SELECT CONSTRUCTION SPECIFICATIONS	
<small>THIS DRAWING IS A COMPUTER GENERATED DRAWING. IT IS NOT TO BE USED FOR MANUFACTURING PURPOSES WITHOUT THE APPROVAL OF THE DESIGN ENGINEER. THE USER OF THIS DRAWING IS RESPONSIBLE FOR THE ACCURACY OF THE DATA. THE USER OF THIS DRAWING IS RESPONSIBLE FOR THE ACCURACY OF THE DATA. THE USER OF THIS DRAWING IS RESPONSIBLE FOR THE ACCURACY OF THE DATA.</small>	
REVISED	12045255

<b>DELPHI</b>	
DELPHI PREPARED ELECTRIC SYSTEMS	
PART NO. 12066591	
DATE	REV
DATE 21, 1	REV 1, 1, 1
DATE 21, 1	REV 1, 1, 1

## X-ON Electronics

Largest Supplier of Electrical and Electronic Components

*Click to view similar products for [Automotive Connectors](#) category:*

*Click to view products by [APTIV](#) manufacturer:*

Other Similar products are found below :

[003-018-000](#) [60403001](#) [60993906-B](#) [629515004020001](#) [M902-2131](#) [M902-2161](#) [72.330.1035.1](#) [73.353.4028.0](#) [F119300-B](#) [F166900](#)  
[F258300-B](#) [F358300-B](#) [F407400](#) [F444110](#) [F487000](#) [F509500B-B](#) [827153-1](#) [8N1515-32-24P](#) [9-1326729-8](#) [925474-1](#) [928905-1](#) [964562-4](#)  
[968782-1](#) [GT17SA-8DS-HU](#) [98891-1012](#) [98947-1016](#) [12004475-L](#) [12010290](#) [12010309-B](#) [12015454](#) [12020219-B](#) [12020308](#) [12041318-B](#)  
[12052225-L](#) [12052466](#) [12059125](#) [12064869](#) [12004327-B](#) [12010503-B](#) [12015308](#) [12015384](#) [12015909](#) [1-21030-1](#) [12041254](#) [12041318](#)  
[12047946-B](#) [12047957](#) [12047957-L](#) [12059473](#) [12066261](#)