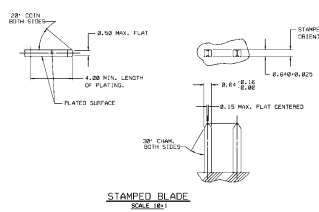
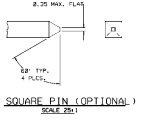
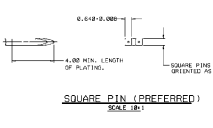
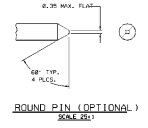
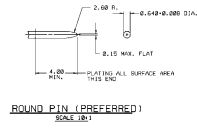


8
7
6
5
4
3
2
1

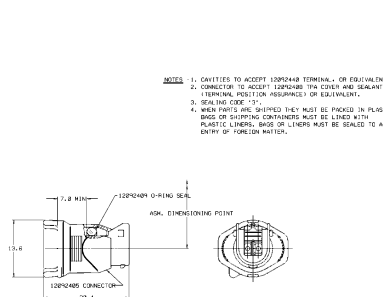
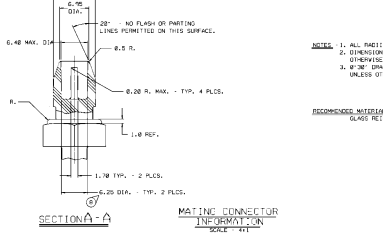
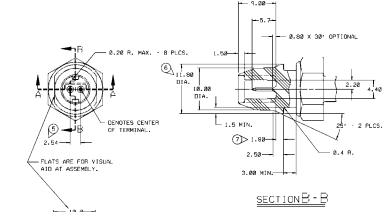
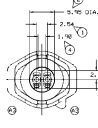
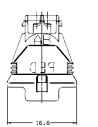
H
G
F
E
D
C
B
A

PACKAGED ELECTRONIC COMPONENTS
www.mouser.com



MATING TERMINAL INFORMATION

- PLATING - CONTACT SURFACES**
- FOR APPLICATIONS WHERE SERVICE TEMP. DOES NOT EXCEED 100°C:
 TIN - MIL-1-28728 OR EQUIVALENT
 TYPE 0 OR TYPE 11, 0.0005 MM (0.0001 IN.) THK.
 MIN. BRIGHTENERS OPTIONAL
 - FOR APPLICATIONS WHERE SERVICE TEMP. EXCEEDS 100°C:
 GOLD - MIL-C-14500C OR EQUIVALENT
 TYPE 11-C, CLASS 90
- PLATING - BASE MATERIAL (UNDESIG)**
- COPPER - USE WITH TIN WHERE REQUIRED
 MIL-C-14500B, CLASS 3, 0.0005 MM (0.0001 IN.) THK.
 OR EQUIVALENT
 - NICKEL - USE WITH GOLD
 30 IN 300A LOW STRESS SULFUR
 0.0005 MM (0.0001 IN.) THK. OR EQUIVALENT
- TERMINAL - BASE MATERIAL OPTIONS**
- BRASS - CDA 268, HARD
 - PHOS. BRONZE - CDA 510, GRADE A, HARD



REV	DATE	DESCRIPTION	BY	CHK
1	12/09/09	ISSUE
2
3
4
5
6
7
8

NOTE:

- ALL RADI 0.40, UNLESS OTHERWISE SPECIFIED.
- DIMENSIONS ARE TO FACE OF VIEW UNLESS OTHERWISE INDICATED.
- 0.050 TOLERANCE ON ALL DIMENSIONS AND SURFACE FINISHES UNLESS OTHERWISE SPECIFIED.

RECOMMENDED MATERIAL:
GLASS REINFORCED THERMOPLASTIC

GENERAL NOTE

THIS DRAWING INDICATES DIMENSIONS AND CHARACTERISTICS THAT ARE IMPORTANT TO THE FUNCTION AND/OR PROCESSING OF THE PART. IT DOES NOT NECESSARILY INDICATE AN ASSEMBLY SEQUENCE OR DIMENSIONS. THIS DRAWING HAS 8 SHOWINGS.

REV	DATE	DESCRIPTION	BY	CHK
1	12/09/09	ISSUE
2
3
4
5
6
7
8

X-ON Electronics

Largest Supplier of Electrical and Electronic Components

Click to view similar products for [Automotive Connectors](#) category:

Click to view products by [APTIV](#) manufacturer:

Other Similar products are found below :

[003-018-000](#) [60403001](#) [60993906-B](#) [629515004020001](#) [M902-2131](#) [M902-2161](#) [72.330.1035.1](#) [73.353.4028.0](#) [F119300-B](#) [F166900](#)
[F258300-B](#) [F358300-B](#) [F407400](#) [F444110](#) [F487000](#) [F509500B-B](#) [827153-1](#) [8N1515-32-24P](#) [9-1326729-8](#) [925474-1](#) [928905-1](#) [964562-4](#)
[968782-1](#) [GT17SA-8DS-HU](#) [98891-1012](#) [98947-1016](#) [12004475-L](#) [12010290](#) [12010309-B](#) [12015454](#) [12020219-B](#) [12020308](#) [12041318-B](#)
[12052225-L](#) [12052466](#) [12059125](#) [12064869](#) [12004327-B](#) [12010503-B](#) [12015308](#) [12015384](#) [12015909](#) [1-21030-1](#) [12041254](#) [12041318](#)
[12047946-B](#) [12047957](#) [12047957-L](#) [12059473](#) [12066261](#)