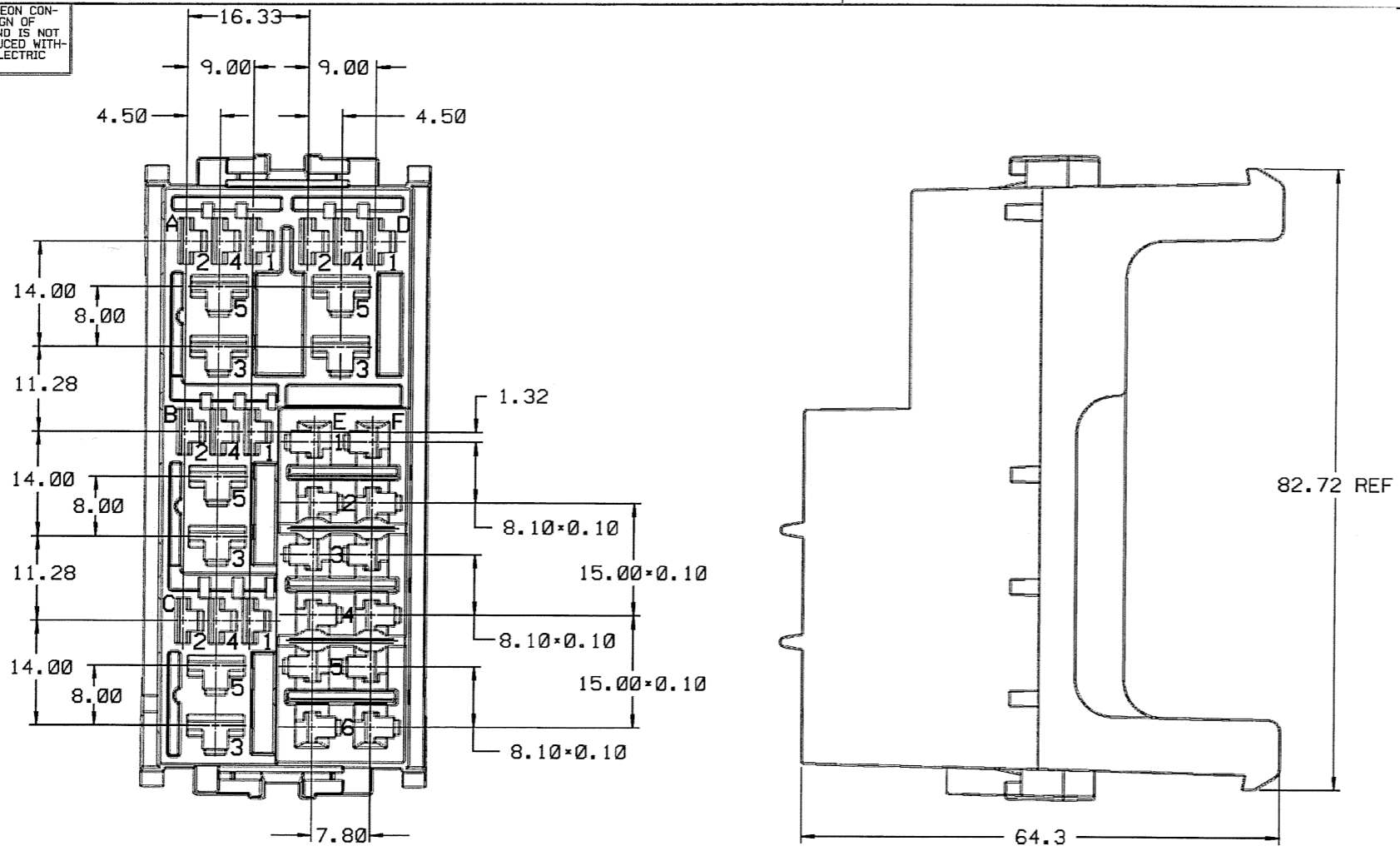


D THIS DRAWING AND DESIGN HEREON CONSTITUTES A PROPRIETARY DESIGN OF PACKARD ELECTRIC DIVISION AND IS NOT TO BE DUPLICATED OR REPRODUCED WITHOUT AUTHORITY OF PACKARD ELECTRIC DIVISION.

DO NOT SCALE



NOTES

1. DIMENSIONS ARE TO FACE OF VIEW UNLESS OTHERWISE INDICATED.
2. CAVITIES A3,A5,B3,B5,C3,C5,D3,& D5 ARE IDENTICAL, EXCEPT AS SHOWN, AND ACCEPT 12015869 TERMINAL OR EQUIVALENT. MAX. INSULATION CRIMP MUST BE LESS THAN 5.65 HIGH AND 7.50 WIDE.
3. CAVITIES A1,A2,A4,B1,B2,B4,C1,C2,C4,D1,D2,&D4 ARE IDENTICAL, EXCEPT AS SHOWN, AND ACCEPT 12065892 TERMINAL OR EQUIVALENT. MAX. INSULATION CRIMP MUST BE LESS THAN 6.30 HIGH AND 5.55 WIDE.
4. CAVITIES E1,E3,E5,F1,F3,&F5 ARE IDENTICAL, EXCEPT AS SHOWN, AND ACCEPT 12092556 TERMINAL OR EQUIVALENT. MAX. INSULATION CRIMP MUST BE LESS THAN 4.75 HIGH AND 4.00 WIDE.
5. CAVITIES E2,E4,E6,F2,F4,&F6 ARE IDENTICAL, EXCEPT AS SHOWN, AND ACCEPT 12092525 TERMINAL BUS BAR OR EQUIVALENT. MAX. INSULATION CRIMP MUST BE LESS THAN 6.30 HIGH AND 5.55 WIDE.
6. THIS PART ACCEPTS 12110595 COMB OR EQUIVALENT.
7. THIS PART ACCEPTS 12110602 COVER OR EQUIVALENT.
8. THIS PART ACCEPTS 12077530 COVER CLIP OR EQUIVALENT, 2 REQ'D.
9. THIS PART MATES WITH 12084910 MOUNTING BASE OR EQUIVALENT.
10. PLATED TERMINALS ARE REQUIRED TO ENSURE ADEQUATE RELAY RETENTION IN ANY APPLICATION WHICH POSITIONS THE RELAYS FACING DOWN.
11. SEALING CODE 0.
12. DIMENSIONS MARKED 'REF' ARE FOR REFERENCE ONLY, AND NO TOLERANCE LIMITS ARE ESTABLISHED.
13. MATERIAL RECYCLING CODE PER ISO 11469. (2.3) X (0.1) RAISED CHARACTERS AS SHOWN TO BE LOCATED ON ANY EXTERIOR SURFACE. OPTIONAL CONSTRUCTION TO BE NO MATERIAL RECYCLING CODE.
14. (2.3) X (0.1) RAISED DELPHI CORPORATE BRAND TO BE LOCATED ON ANY EXTERIOR SURFACE, PREFERABLY VISIBLE AT FINAL ASSEMBLY. OPTIONAL CONSTRUCTION TO BE "PED" OR NO LOGO.

PACKARD ELECTRIC DIVISION
GENERAL MOTORS CORPORATION
WARREN, OHIO

DATE	SYM	REVISION RECORD	AUTHORITY	DR	CK
14DE90	B	RELEASED	900005	BPM	BPM
10JA91	C	MOVED INDEXING FEATURE	139865	BPM	BPM
02DE91	D	ADDED 15.00±0.10, REMOVED 30.00±0.10 AND RELOCATED 15.00±0.10	146092	BKD	BKD
27MR06	D1	UPDATED MAT'L SPEC & ADDED DELPHI LOGO & RECYCLING			
		CODE NOTES	279007	RMG	JAA

PED / INERGRAPH MICROSTATION		FILE: ****USER**** SPEC: DGN#SPECIFICATION***** *****SYTIME*****
THIRD ANGLE PROJECTION		METRIC DIMENSIONS ARE IN MILLIMETERS UNLESS OTHERWISE SPECIFIED.
CODE NO. 6900	TOLERANCE UNLESS OTHERWISE SPECIFIED DECIMAL: ONE PLACE ± 0.3 ANGULAR ± 2° TWO PLACE ± 0.15	
DWG. DATE: 21 JN 90	SCALE: NONE	DR. BRIAN MADISON 13DE90
EST. NO.	CK. BRIAN MADISON	DATE 13DE90
REFERENCE NO. 12110594 *R* SIZE	APPR. JOSEPH LYTLE	DATE 11JA91
	APPR. R.A. PETROSKY	DATE 11JA91
MATERIAL SPEC. M2279001 PA66 GF14 HS IM BLK		
NAME CONVENIENCE CTR		
PART NO. 1211 0594	SIZE C	
OUTLINE DRAWING		

X-ON Electronics

Largest Supplier of Electrical and Electronic Components

Click to view similar products for [Automotive Connectors](#) category:

Click to view products by [APTIV](#) manufacturer:

Other Similar products are found below :

[003-018-000](#) [60403001](#) [60993906-B](#) [629515004020001](#) [M902-2131](#) [M902-2161](#) [72.330.1035.1](#) [73.353.4028.0](#) [F119300-B](#) [F166900](#)
[F258300-B](#) [F358300-B](#) [F407400](#) [F444110](#) [F487000](#) [F509500B-B](#) [827153-1](#) [8N1515-32-24P](#) [9-1326729-8](#) [925474-1](#) [928905-1](#) [964562-4](#)
[968782-1](#) [GT17SA-8DS-HU](#) [98891-1012](#) [98947-1016](#) [12004475-L](#) [12010290](#) [12010309-B](#) [12015454](#) [12020219-B](#) [12020308](#) [12041318-B](#)
[12052225-L](#) [12052466](#) [12059125](#) [12064869](#) [12004327-B](#) [12010503-B](#) [12015308](#) [12015384](#) [12015909](#) [1-21030-1](#) [12041254](#) [12041318](#)
[12047946-B](#) [12047957](#) [12047957-L](#) [12059473](#) [12066261](#)