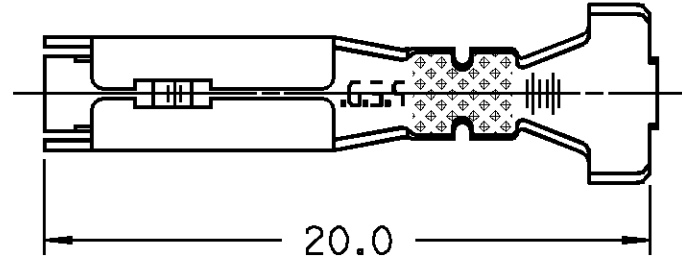


D

THIS DRAWING AND DESIGN HEREON CONSTITUTES A PROPRIETARY DESIGN OF PACKARD ELECTRIC DIVISION AND IS NOT TO BE DUPLICATED OR REPRODUCED WITHOUT AUTHORITY OF PACKARD ELECTRIC DIVISION.

DO NOT SCALE

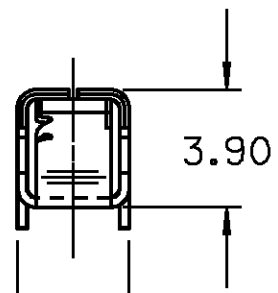
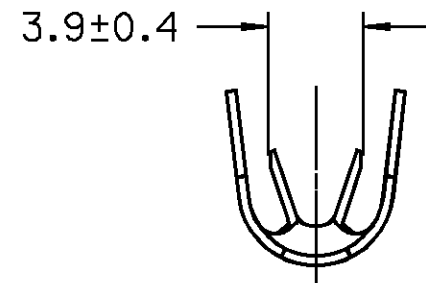
PART NO. 1211 0845



PACKARD ELECTRIC DIVISION
GENERAL MOTORS CORPORATION
WARREN, OHIO

CONDUCTOR WINGS FOR
3.0 - 2.0 MM² CABLE

INSULATION WINGS FOR
3.65 - 2.50 INSULATION DIAMETER



3.70 +0.20
-0.15

NOTE - MATING TERMINAL 12048159 OR EQUIVALENT.

DATE	SYM	REVISION RECORD	AUTHORITY	DR	CK
26MR91	D	RELEASED	910005	BKD	BKD
06MY91	E	ADDED TABS 2 PLCS	141852	BAR	BAR
01JL91	F	REVISED GRAPHICS	143053	BKD	BKD
02FE92	G	ADVANCED REVISION LEVEL	147002	WHP	HH
12JL93	H	ADVANCED REVISION LEVEL	156472	TEB	TEB
30JL96	—	REVISED DETAIL- NO REV UPDATE REQ'D FOR P.I.D.	156472	TEB	TEB
			173849	HH	HH

PED/INTEGRATED EMS		FILE SPEC: ***USER*** DGN SPECIFICATION***** *****SYTIME*****
THIRD ANGLE PROJECTION 		METRIC DIMENSIONS ARE IN MILLIMETERS UNLESS OTHERWISE SPECIFIED.
CODE NO. 6900	TOLERANCE UNLESS OTHERWISE SPECIFIED DECIMAL: ANGULAR ± 2° ONE PLACE ± 0.3 TWO PLACE ± 0.15	
G.C.	DR. BRIAN K. DEW	26MR91
DWG. DATE 26MR91	SCALE NONE	
EST. NO.	CK. BRIAN K. DEW	DATE 26MR91
REFERENCE NO. 12110848 "D" SIZE	APPR. AL HERRMANN	DATE 27MR91
	APPR. R. A. PETROSKY	DATE 27MR91
MATERIAL SPEC. 0.32 THK. CA425 BRASS		
NAME TERM F M/P 280 SEALED TANGLESS		
PART NO.	1211 0845	SIZE B
OUTLINE DRAWING		

X-ON Electronics

Largest Supplier of Electrical and Electronic Components

Click to view similar products for [Automotive Connectors](#) category:

Click to view products by [APTIV](#) manufacturer:

Other Similar products are found below :

[003-018-000](#) [60403001](#) [60993906-B](#) [629515004020001](#) [M902-2131](#) [M902-2161](#) [72.330.1035.1](#) [73.353.4028.0](#) [F119300-B](#) [F166900](#)
[F258300-B](#) [F358300-B](#) [F407400](#) [F444110](#) [F487000](#) [F509500B-B](#) [827153-1](#) [8N1515-32-24P](#) [9-1326729-8](#) [925474-1](#) [928905-1](#) [964562-4](#)
[968782-1](#) [GT17SA-8DS-HU](#) [98891-1012](#) [98947-1016](#) [12004475-L](#) [12010290](#) [12010309-B](#) [12015454](#) [12020219-B](#) [12020308](#) [12041318-B](#)
[12052225-L](#) [12052466](#) [12059125](#) [12064869](#) [12004327-B](#) [12010503-B](#) [12015308](#) [12015384](#) [12015909](#) [1-21030-1](#) [12041254](#) [12041318](#)
[12047946-B](#) [12047957](#) [12047957-L](#) [12059473](#) [12066261](#)