
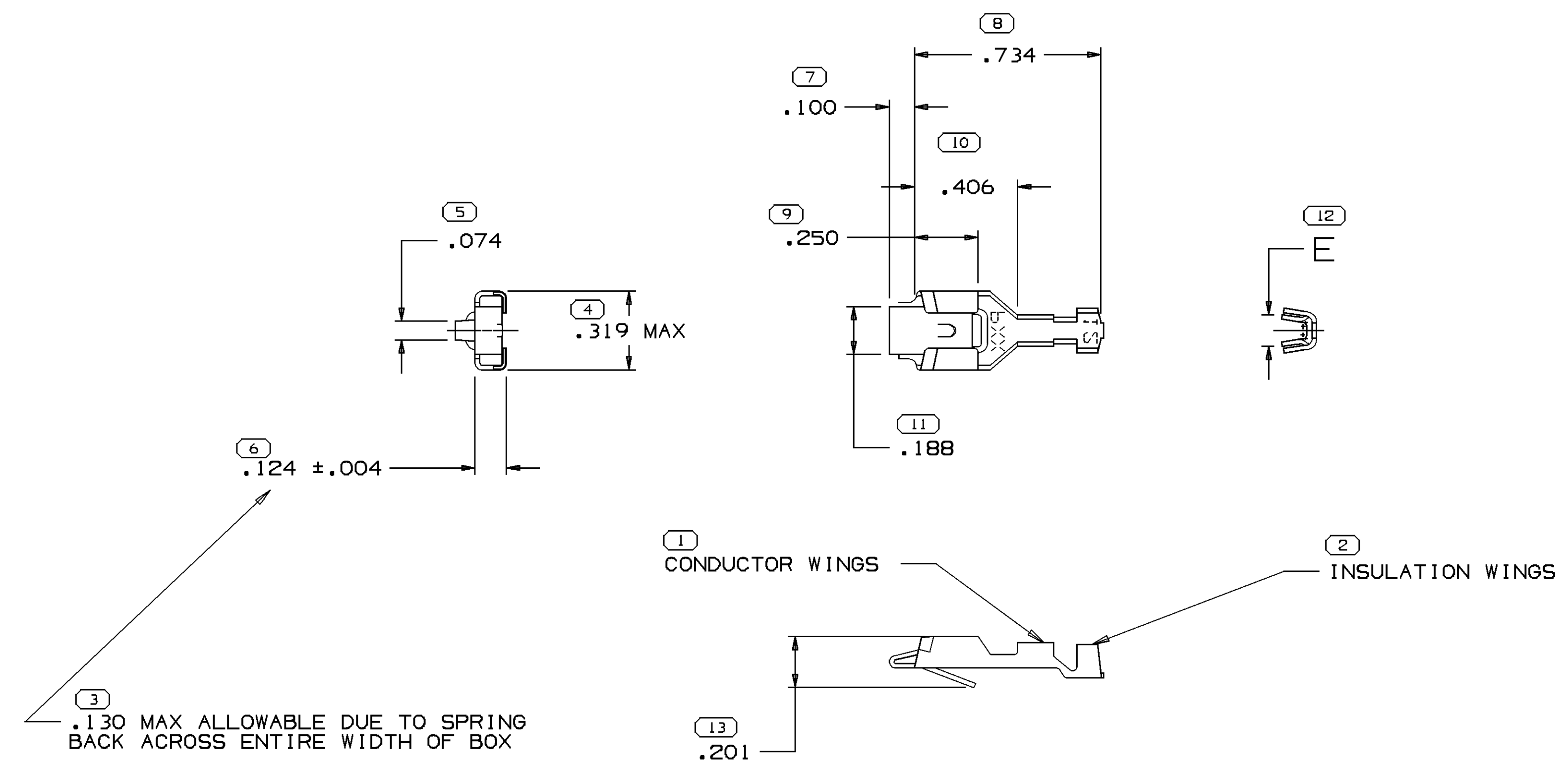


SYMBOL DEFINITION		MISSING NUMBERS	
THE NUMBER INSIDE THE SYMBOL 	TOTAL NO. OF SYMBOLS ON DRAWING		13
	LAST NO. USED		13

DWG STATUS				ZONE	REVISION HISTORY			AUTH	DR	APVD1	APVD2	
DATE	STG	REV	N/P		CHG							
04JA00	R	01	-	-		ALL PARTS - UPATED PDM ATTRIBUTES AND REDRAW TO PD			198110	RB	GMC	JA
26JN08		02	-	-		12124505 & 12124506 - OBSOLETE AND ADDED "REPLACED BY" COLUMN TO CHART			405119	EF5	JVM	RAP

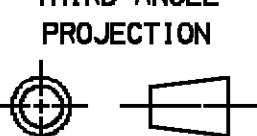
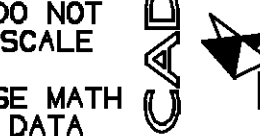


NOTES:

- UNLESS OTHERWISE SPECIFIED AND/OR INDICATED;  
DIMENSIONS ARE TO FACE OF VIEW SHOWN AND AUTOMATICALLY ROUNDED BY COMPUTER FOR INSPECTION. (SEE MATH MODEL FOR PRECISE DIMENSION) FOR ALL OTHER DIMENSIONS NOT SHOWN BUT REQUIRED FOR TOOL BUILD, SEE MATH MODEL FOR PRECISE TOOL PATH DATA.
- THIS TERMINAL FOR MOLD-ON APPLICATIONS ONLY.
- TO FIT .032 X .250 BLADE.

PART NO	REV	N/P	STATUS	MAT'L SIZE	MAT'L SPEC	REPLACED BY	PART NO	REV	N/P	STATUS	MAT'L SPEC	NIB	TANG	FOOT	SIZE MM²	DIA	ID	TYPE	WING CONST	E
12124511	B		OBSOLETE	.0180 X 1.375	M1546222		12124526	B		OBSOLETE	M1598222	X	X	X	5	4.48-4.32	10	101	I	.245
12124506	B2		OBSOLETE	.0180 X 1.375	M1546222	12124519	12124519	B4			M1598222	X	X	X	3	3.65-3.49	12	101	I	.214
12124505	B2		OBSOLETE	.0180 X 1.375	M1546222	12124518	12124518	B5			M1598222	X	X	X	3	3.65-3.49	12	101	I	.214
				UNPLATED					TIN PLATED				FEATURES				CABLE			

(13) PROCESS SENSITIVE DIMENSION	
DIMENSIONS ENCLOSED IN ( ) INDICATE REFERENCE DIMENSIONS AND NO TOLERANCE LIMITS ARE ESTABLISHED	
DIMENSIONAL RANGE (IN)	CHART J
FROM 0	>.500
TO .500	>.500
TOLERANCE UNLESS OTHERWISE SPECIFIED ±.005 ±.010	
ANGULAR TOLERANCE ±2°	

DWG TYPE PART DRAWING	
STYLE	
VOLUME (C/P)	DISTR CODE D
UNLESS OTHERWISE SPECIFIED PERFECT FORM REQUIRED FOR FEATURES OF SIZE AT MMC. TRUE POSITION TOLERANCES AND RELATED DATUMS APPLY AT CONDITION OF SIZE INDICATED IN FEATURE CONTROL FRAME. ALL OTHER GEOMETRIC TOLERANCES AND RELATED DATUMS APPLY RFS. SEPARATE TRUE POSITION CALLOUTS MAY BE GAGED SEPARATELY, REGARDLESS OF DATUM REFERENCE.	
ALL DIMENSIONS ARE IN INCHES	
THIRD ANGLE PROJECTION	DO NOT SCALE USE MATH DATA
	

**DELPHI**  
DELPHI PACKARD ELECTRICAL/ELECTRONIC ARCHITECTURE  
WARREN, OH

DR	DATE
APVD1 R. BARBOZA	04JA00
APVD2 G. MACIAS	04JA00
APVD3 J. ALVAREZ	04JA00
APVD4	
APVD5	

SUBSTANCES OF CONCERN AND RECYCLED CONTENT PER DELPHI 10949001

MATERIAL  
SEE CHART

DRAWING NAME  
TAXI TERM F 56 SERIES

DRAWING NUMBER  
12124500

SIZE	SCALE	FRAME NO	SHEET NO	STG	REV	N/P
A1	4:1	1 OF 1	2 OF 2	R	02	-

## X-ON Electronics

Largest Supplier of Electrical and Electronic Components

*Click to view similar products for [Automotive Connectors](#) category:*

*Click to view products by [APTIV](#) manufacturer:*

Other Similar products are found below :

[003-018-000](#) [60403001](#) [60993906-B](#) [629515004020001](#) [M902-2131](#) [M902-2161](#) [72.330.1035.1](#) [73.353.4028.0](#) [F119300-B](#) [F166900](#)  
[F258300-B](#) [F358300-B](#) [F407400](#) [F444110](#) [F487000](#) [F509500B-B](#) [827153-1](#) [8N1515-32-24P](#) [9-1326729-8](#) [925474-1](#) [928905-1](#) [964562-4](#)  
[968782-1](#) [GT17SA-8DS-HU](#) [98891-1012](#) [98947-1016](#) [12004475-L](#) [12010290](#) [12010309-B](#) [12015454](#) [12020219-B](#) [12020308](#) [12041318-B](#)  
[12052225-L](#) [12052466](#) [12059125](#) [12064869](#) [12004327-B](#) [12010503-B](#) [12015308](#) [12015384](#) [12015909](#) [1-21030-1](#) [12041254](#) [12041318](#)  
[12047946-B](#) [12047957](#) [12047957-L](#) [12059473](#) [12066261](#)