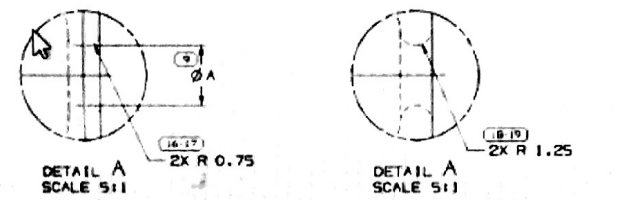
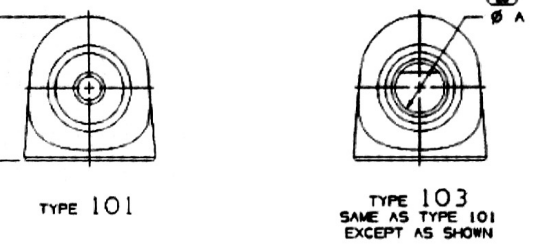
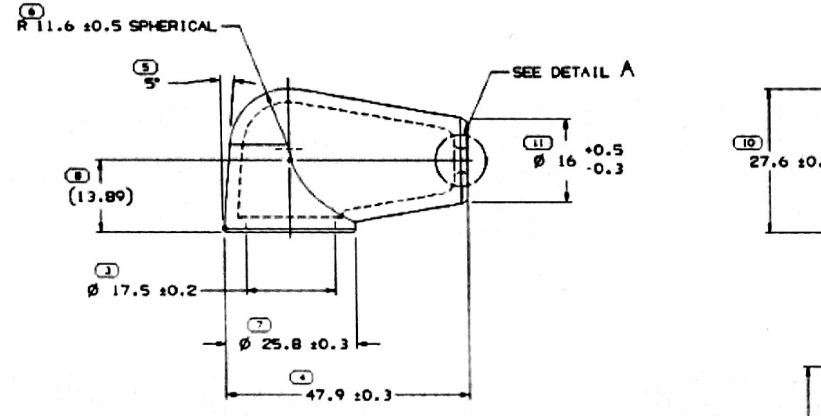
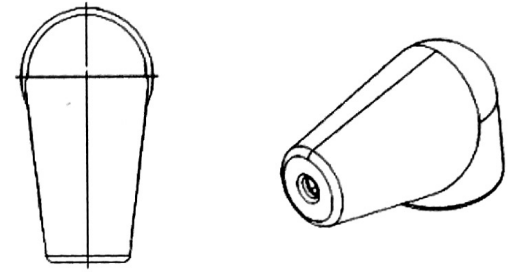


SYMBOL DEFINITION		MISSING NUMBERS	
A DIMENSION WITHOUT AN INSPECTION REPORT SYMBOL \square DOES NOT REQUIRE INSPECTION. IT MAY BE CONTROLLED ON AN INDIVIDUAL COMPONENT DRAWING.	TOTAL NO. OF SYMBOLS ON DRAWING	19	
	LAST NO. USED	22	

REV STATUS				ZONE	REVISION HISTORY	AUTH	DR	APP'D
DATE	STG	REV	N/P					
210200	R	01	-		ALL PARTS - RETURN TO PD, ADDED RIBS & REVISED HOLE CONSTRUCTION	200463	JLZ	PC
210200	R	02	-		12146809 - UPDATED PDM ATTRIBUTES; 12146808 & 12146810 - R 0.75 WAS 1.25	204020	PC	PC
210200	R	03	-		ALL PARTS - REVISED HOLE CONSTRUCTION	205320	PC	PC
120201	R	04	-		ALL PARTS - UPDATED PDM ATTRIBUTES	211660	PC	LA
130201	R	05	-		PROCESS SENSITIVE DIMENSION 9 WAS 2	218574	DM	AL
210703	R	06	-		12146808, 10 - REVISED CABLE OD DIM	241451	LP	MP
151004	-	07	-		15497352 - ADDED TO TAXI AND RELEASED	230253	AK	AK
301004	R	08	-		15497352 - DIM "A" WAS 7.00	256394	AK	AK
040004	R	09	-		ALL PARTS - 17.5 +/- 0.2 WAS 17.5; 15497352 - 0.5 +/- 0.2 WAS 0.5	264973	SE	SE
130205	R	10	-		12146810 - ADDED DETAIL A 1 DIMENSION A WAS 4.50	273635	MC	MC
100206	R	11	-		ALL PARTS - REVISED MAT'L SPEC	282237	RTV	MS
080206	R	12	-		ALL PARTS - ϕ 16 +/- 0.3 WAS ϕ 16	287319	MM	MM
080407	R	13	-		ALL PARTS - ADDED NOTE #4 WALL THICKNESS	402835	MM	MM



- NOTES
- UNLESS OTHERWISE SPECIFIED AND/OR INDICATED: DIMENSIONS ARE TO FACE OF VIEW SHOWN AND AUTOMATICALLY ROUNDED BY COMPUTER FOR INSPECTION (SEE MATH MODEL FOR PRECISE DIMENSIONS). FOR ALL OTHER DIMENSIONS NOT SHOWN BUT REQUIRED FOR TOOL BUILD, SEE MATH MODEL FOR PRECISE TOOL PATH DATA.
 - REFERENCE MATING COMPONENTS OR EQUIVALENT: RING TERMINAL 12146363
 - PART SURFACE MUST BE SMOOTH AND NONPOROUS.
 - WALL THICKNESS TO BE 2.5 +0.2/-0.3 CONSTANT; UNLESS OTHERWISE NOTED.

PART NO	REV	N/P	STATUS	TYPE	SIZE MM	OD MM	ϕ A	VOL CM ³
15497352	02	AD	-	103	19.0	8.01	9.5 ± 0.2	8.192
12146810	06	AK	-	102	8.0 - 5.0	6.06/4.32	4.8	7.751
12146807	06	AH	-	101	19.0 - 13.0	8.01/6.63	6.3 ± 0.5	8.270
12146808	06	AJ	-	101	8.0 - 5.0	6.06/4.32	4.58	8.243

PROCESS SENSITIVE DIMENSION	
1	2
3	4
5	6
7	8
9	10
11	12
13	14
15	16
17	18
19	20
21	22

PART DRAWING

DATE: _____

WALLS: SEE CHART **D**

THIRD ANGLE PROJECTION DO NOT SCALE USE MATH DATA

DELPHI
DELPHI PIONEER ELECTRICAL/ELECTRONIC ARCHITECTURE
MORRIS, MI

DATE: 210200

BY: J. ZAMUDIO
CHKD: R. CHACON
APP'D: R. CORVAS

SUBMITTALS OF COMPONENTS ARE RECEIVED
CONTAINED PER DELPHI 12146810

DATE: 210200

DRAWING NAME: TAXI SLEEV BOOT

DRAWING NUMBER: 12146811

SCALE: 2:1 | 1 OF 1 | 1 OF 1 | R 13

X-ON Electronics

Largest Supplier of Electrical and Electronic Components

Click to view similar products for [Automotive Connectors](#) category:

Click to view products by [APTIV](#) manufacturer:

Other Similar products are found below :

[003-018-000](#) [60403001](#) [60993906-B](#) [629515004020001](#) [M902-2131](#) [M902-2161](#) [72.330.1035.1](#) [73.353.4028.0](#) [F119300-B](#) [F166900](#)
[F258300-B](#) [F358300-B](#) [F407400](#) [F444110](#) [F487000](#) [F509500B-B](#) [827153-1](#) [8N1515-32-24P](#) [9-1326729-8](#) [925474-1](#) [928905-1](#) [964562-4](#)
[968782-1](#) [GT17SA-8DS-HU](#) [98891-1012](#) [98947-1016](#) [12004475-L](#) [12010290](#) [12010309-B](#) [12015454](#) [12020219-B](#) [12020308](#) [12041318-B](#)
[12052225-L](#) [12052466](#) [12059125](#) [12064869](#) [12004327-B](#) [12010503-B](#) [12015308](#) [12015384](#) [12015909](#) [1-21030-1](#) [12041254](#) [12041318](#)
[12047946-B](#) [12047957](#) [12047957-L](#) [12059473](#) [12066261](#)