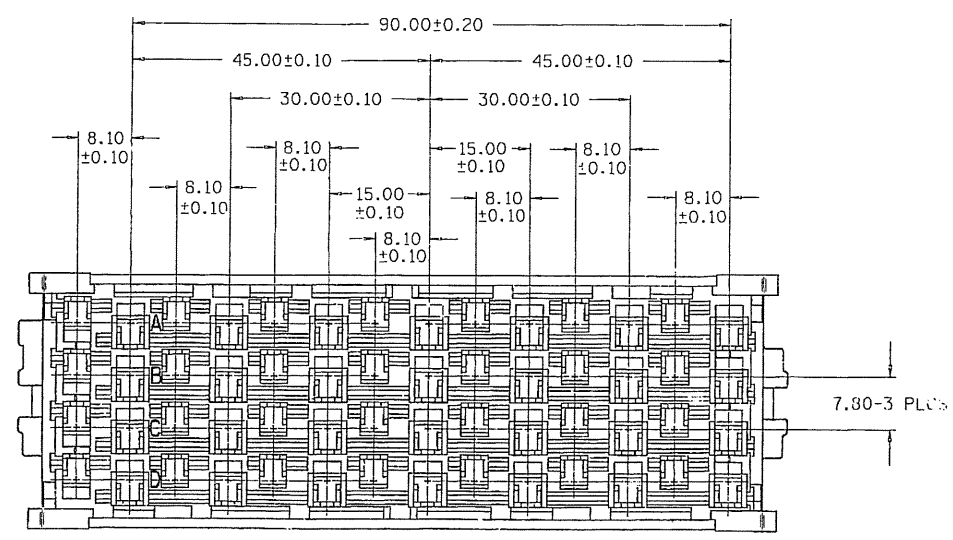
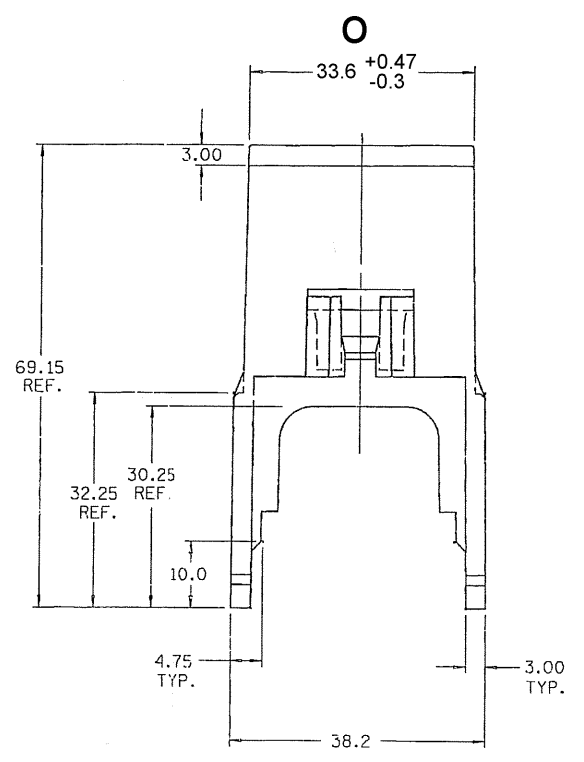
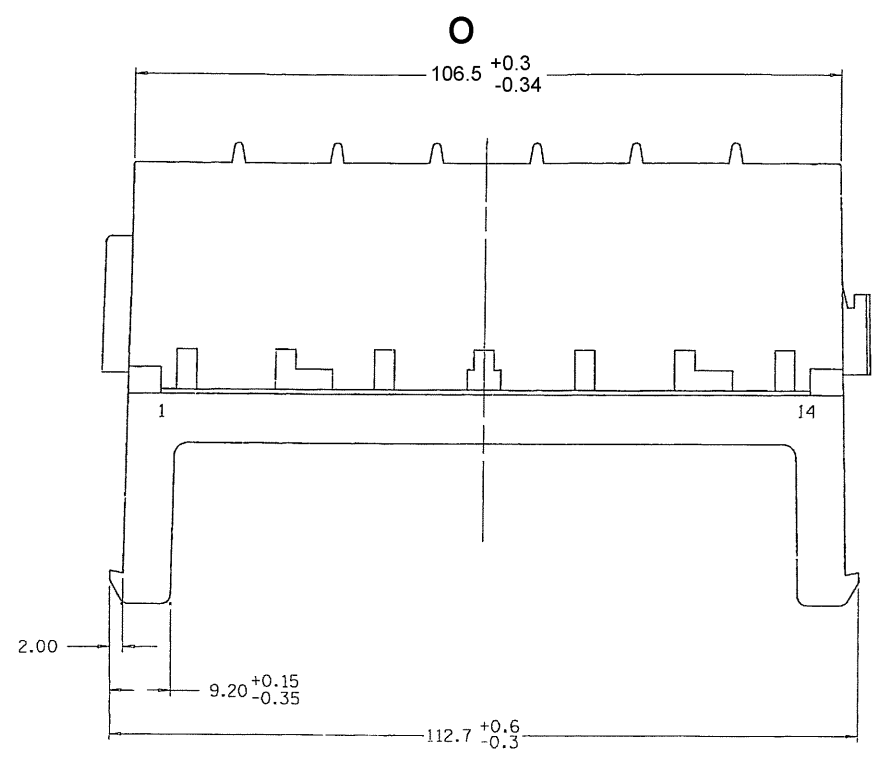


PACKARD ELECTRIC DIVISION  
GENERAL MOTORS CORPORATION  
WARREN, OHIO

DATE	SYM	REVISION RECORD	AUTHORITY	DR	CK
15MY95	A	RELEASED	950005	RLB	RLB
23OC95	A1	REVISED - MAT'L	167530	RLB	RLB
28MR06	A2	MAT'L SPEC WAS R0071713 AND ADDED NOTES 10 & 11	279078	JTZ	FRG
01MY06	A3	106.5 +0.3/-0.34 WAS 106.5 AND 33.6 +0.47/-0.3 WAS 33.6	280134	MDH	FRG



- NOTES** -
- THIS PART ACCEPTS 12092507 SECONDARY TERMINAL LOCK.
  - THIS PART ACCEPTS 12092823 COVER OR EQUIVALENT.
  - THIS PART ACCEPTS (2) 12077530 COVER CLIP OR EQUIVALENT
  - THIS PART MATES WITH 12092327 MOUNTING BASE OR EQUIVALENT.
  - MAX. INSULATION CRIMP MUST BE LESS THAN 4.75 HIGH AND 4.00 WIDE FOR ROWS A,B,C, & D - CAVITIES 3,5,7,9,11 & 13.
  - MAX. INSULATION CRIMP MUST BE LESS THAN 6.30 HIGH AND 5.55 WIDE FOR ROWS A,B,C, & D - CAVITIES 1,2,4,6,8,10,12 & 14.
  - THESE CAVITIES ACCEPT 12092556 TERMINAL OR EQUIVALENT: ROWS A,B,C, & D - CAVITIES 1,3,5,7,9,11 & 13.
  - THESE CAVITIES ACCEPT 12092525 TERMINAL BUS BAR OR EQUIVALENT: ROWS A,B,C, & D - CAVITIES 2,4,6,8,10,12 & 14.
  - SEALING CODE 0.
  - MATERIAL RECYCLING CODE PER ISO 11469. (2.3)(0.1) CHARACTERS AS SHOWN TO BE LOCATED ON ANY EXTERIOR SURFACE. OPTIONAL CONSTRUCTION TO BE NO MATERIAL RECYCLING CODE.
  - (2.3)(0.1) RAISED DELPHI CORPORATE BRAND TO BE LOCATED ON ANY EXTERIOR SURFACE, PREFERABLY VISIBLE AT FINAL ASSEMBLY. OPTIONAL CONSTRUCTION TO BE "PED" OR NO LOGO.

**WARNING**  
GEOMETRY MAY NOT BE  
DRAWN TO SCALE

		FILE SPEC: <b>PED/NEGATI</b> ***USER*** DGN SPECIFICATION ***** *****
THIRD ANGLE PROJECTION		<b>METRIC</b> DIMENSIONS ARE IN MILLIMETERS UNLESS OTHERWISE SPECIFIED.
CODE NO. <b>6900</b>	TOLERANCE UNLESS OTHERWISE SPECIFIED: DECIMAL: ONE PLACE ± 0.3 TWO PLACE ± 0.15 ANGULAR ± 2°	
Dwg. DATE <b>15MY95</b>	SCALE <b>NONE</b>	DR. <b>RON BURNS</b>
EST. NO. <b>12177145 R10 SIZE</b>	CK. <b>RON BURNS</b>	DATE <b>15MY95</b>
REFERENCE NO. <b>12177145 R10 SIZE</b>	APPR. <b>A. HERRMANN</b>	DATE <b>17MY95</b>
MATERIAL SPEC <b>M2279001 PA66 GF14 HS IM BLK</b>		
NAME <b>BASE FUSBLK MINI 56F</b>		
PART NO. <b>1217 7145</b>	SIZE <b>D</b>	
PRODUCT INFORMATION DRAWING		

## X-ON Electronics

Largest Supplier of Electrical and Electronic Components

*Click to view similar products for [Automotive Connectors](#) category:*

*Click to view products by [APTIV](#) manufacturer:*

Other Similar products are found below :

[003-018-000](#) [60403001](#) [60993906-B](#) [629515004020001](#) [M902-2131](#) [M902-2161](#) [72.330.1035.1](#) [73.353.4028.0](#) [F119300-B](#) [F166900](#)  
[F258300-B](#) [F358300-B](#) [F407400](#) [F444110](#) [F487000](#) [F509500B-B](#) [827153-1](#) [8N1515-32-24P](#) [9-1326729-8](#) [925474-1](#) [928905-1](#) [964562-4](#)  
[968782-1](#) [GT17SA-8DS-HU](#) [98891-1012](#) [98947-1016](#) [12004475-L](#) [12010290](#) [12010309-B](#) [12015454](#) [12020219-B](#) [12020308](#) [12041318-B](#)  
[12052225-L](#) [12052466](#) [12059125](#) [12064869](#) [12004327-B](#) [12010503-B](#) [12015308](#) [12015384](#) [12015909](#) [1-21030-1](#) [12041254](#) [12041318](#)  
[12047946-B](#) [12047957](#) [12047957-L](#) [12059473](#) [12066261](#)