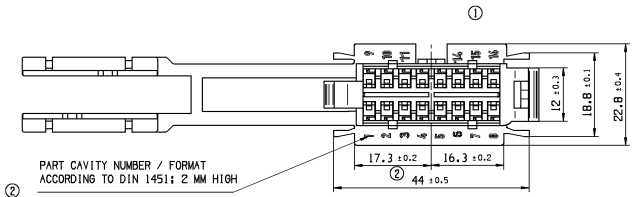
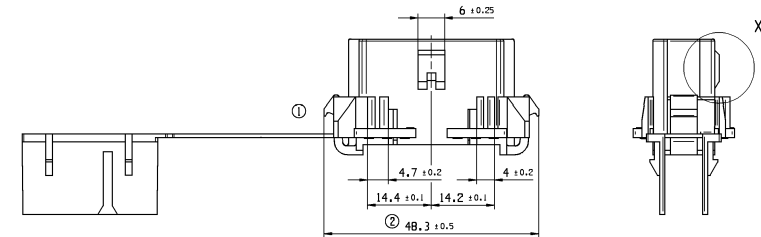


POS	TITLE BENENNUNG	PART-NO.1	PART-REV	DATE DATUM	AMOUNT ANZAHL	MATERIAL WERKSTOFF	MATING PART-NO.1 BEZUGSUEBER TEILE-NR.1
1	RECEPTACLE HOUSING 16 WAY FLACHSTECKHUELSENGEHAEUSE 16 POL.	15397536	02	135E01	1	PA 6.6 BLK	
2	RECEPTACLE HOUSING 16 WAY FLACHSTECKHUELSENGEHAEUSE 16 POL.	15397594	02	135E01	1	PA 6.6 WHT	15345505
3	RECEPTACLE HOUSING 16 WAY FLACHSTECKHUELSENGEHAEUSE 16 POL.	12185280	02	135E01	1	PA 6.6 WHT	12185279
4	RECEPTACLE HOUSING 16 WAY FLACHSTECKHUELSENGEHAEUSE 16 POL.	15343993	02	135E01	1	PA 6.6 BLK	

ZONE	REV IN / PPR	STATUS	REVISION HISTORY	DATE	NAME	CHECK	STOCK
01			INITIAL RELEASE	200E00	HORN, HACKELER, WIS.		
01	AA		PART NO. 15397536 WAS 15397535 PART NO. 15397594 WAS 15397593	31JUN01	HORN, HACKELER, WIS.		
01	AB		SHAPE CHANGE				
01	AD		POSITION OF MOUNTING DEVICE CHANGED POSITION FOR COMPACT MOUNTING				
01	AD		PART CAVITY NUMBER 1.6.11.14 ADDED DIMENSIONS CHANGED 1.6.11.14 ADDED	19MRO1	HORN, HACKELER, WIS.		
02			- MOUNTING ACTUATOR WITH 12.4 MM WAS 12.4 MM - MOUNTING ACTUATOR WITH 12.4 MM WAS 12.4 MM				
02			- PART CAVITY NO. WAS 1.6 MM HIGH - DIMENSIONS CHANGED 1.6 MM HIGH				
01	AA		DIM. 48.3 WAS 48.1 DIMS 48.3 WAS 48.1				
01	AB		DIM. 48.3 WAS 48.1 DIMS 48.3 WAS 48.1				
15	AC		ADDED DIMENSIONS AND DIMS PART REV AND DATUM CHANGED	135E01	ENG. SIHORAR, WIS.		

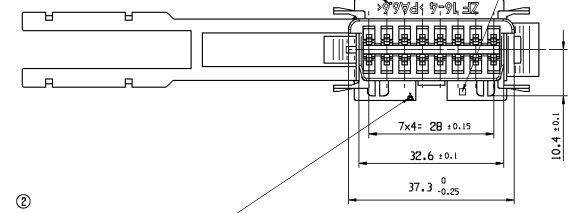


① PART CAVITY NUMBER / FORMAT
ACCORDING TO DIN 1451: 2 MM HIGH
KAMMERKENNZEICHNUNG / SCHRIFTFART
NACH DIN 1451: 2 MM HOCH

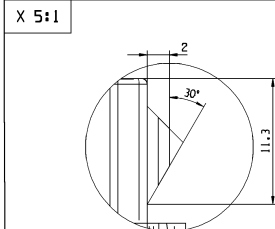
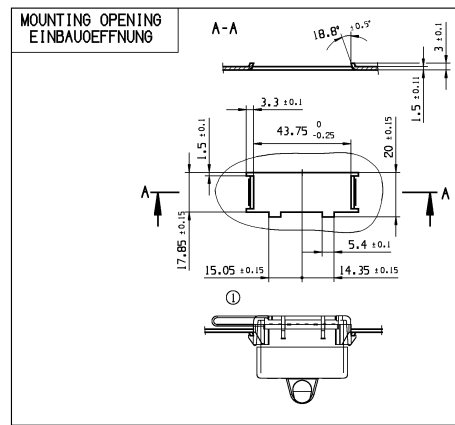


MATERIAL NAME ACCORDING TO VDA 260 /
FORMAT ACCORDING TO DIN 1451: 2,5 MM HIGH
WERKSTOFFKENNZEICHNUNG NACH VDA 260 /
SCHRIFTFART NACH DIN 1451: 2,5 MM HOCH

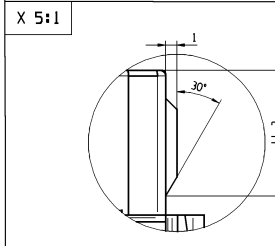
TOOL CAVITY NUMBER / FORMAT
ACCORDING TO DIN 1451: 1.6 MM HIGH
FORM- UND NESTKENNZEICHNUNG / SCHRIFTFART
NACH DIN 1451: 1.6 MM HOCH



② MANUFACTURER MARK X=1.6 MM
HERSTELLERZEICHEN X=1.6 MM



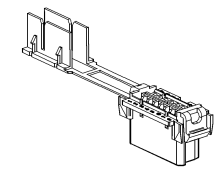
POS	PART-NO.1	MATERIAL WERKSTOFF
1	15397536	PA 6.6 BLK
2	15397594	PA 6.6 WHT



POS	PART-NO.1	MATERIAL WERKSTOFF
3	12185280	PA 6.6 WHT
4	15343993	PA 6.6 BLK

ZONE	REV IN / PPR	STATUS	REVISION HISTORY	DATE	NAME	CHECK	STOCK
01			INITIAL RELEASE	200E00	HORN, HACKELER, WIS.		
01	AA		PART NO. 15397536 WAS 15397535 PART NO. 15397594 WAS 15397593	31JUN01	HORN, HACKELER, WIS.		
01	AB		SHAPE CHANGE				
01	AD		POSITION OF MOUNTING DEVICE CHANGED POSITION FOR COMPACT MOUNTING				
01	AD		PART CAVITY NUMBER 1.6.11.14 ADDED DIMENSIONS CHANGED 1.6.11.14 ADDED	19MRO1	HORN, HACKELER, WIS.		
02			- MOUNTING ACTUATOR WITH 12.4 MM WAS 12.4 MM - MOUNTING ACTUATOR WITH 12.4 MM WAS 12.4 MM				
02			- PART CAVITY NO. WAS 1.6 MM HIGH - DIMENSIONS CHANGED 1.6 MM HIGH				
01	AA		DIM. 48.3 WAS 48.1 DIMS 48.3 WAS 48.1				
01	AB		DIM. 48.3 WAS 48.1 DIMS 48.3 WAS 48.1				
15	AC		ADDED DIMENSIONS AND DIMS PART REV AND DATUM CHANGED	135E01	ENG. SIHORAR, WIS.		

SCALE: 1:1



DELPHI D-42119 HUPPERTAL

DATE: 198000
BY: HORN, HACKELER, WIS.
CHECKED BY: HORN, HACKELER, WIS.
SCALE: 200000 P. WIS.

VOLUME: 1 / PART: 1

MATERIAL: SEE CHART / SIEHE TABELLE

TITLE: RECEPTACLE HOUSING 16 WAY
FOR METRI-PACK 150
FLACHSTECKHUELSENGEHAEUSE 16 POL.
FUER METRI-PACK 150

PROJECTION: 15397593 01-01 K

SCALE: 2:1
DATE: 11:15:11

METRI-PACK 150	0,35 - 0,50 mm ²	FEMALE	12129373	CUSH-SN	DELPHI
METRI-PACK 150	0,75 - 1,00 mm ²	FEMALE	12129494	CUSH-SN	DELPHI

TERMINAL KONTAKTEILE	CROSS SECTION QUERSCHNITT	VERSION AUSFUEHRUNG	PART-NO.1	MATERIAL WERKSTOFF	REMARK BEMERKUNG

DRIVING NO. 1	FRASE -- FROM	STATUS	SCALE
			2:1

X-ON Electronics

Largest Supplier of Electrical and Electronic Components

Click to view similar products for [Automotive Connectors](#) category:

Click to view products by [APTIV](#) manufacturer:

Other Similar products are found below :

[003-018-000](#) [60403001](#) [60993906-B](#) [629515004020001](#) [M902-2131](#) [M902-2161](#) [72.330.1035.1](#) [73.353.4028.0](#) [F119300-B](#) [F166900](#)
[F258300-B](#) [F358300-B](#) [F407400](#) [F444110](#) [F487000](#) [F509500B-B](#) [827153-1](#) [8N1515-32-24P](#) [9-1326729-8](#) [925474-1](#) [928905-1](#) [964562-4](#)
[968782-1](#) [GT17SA-8DS-HU](#) [98891-1012](#) [98947-1016](#) [12004475-L](#) [12010290](#) [12010309-B](#) [12015454](#) [12020219-B](#) [12020308](#) [12041318-B](#)
[12052225-L](#) [12052466](#) [12059125](#) [12064869](#) [12004327-B](#) [12010503-B](#) [12015308](#) [12015384](#) [12015909](#) [1-21030-1](#) [12041254](#) [12041318](#)
[12047946-B](#) [12047957](#) [12047957-L](#) [12059473](#) [12066261](#)