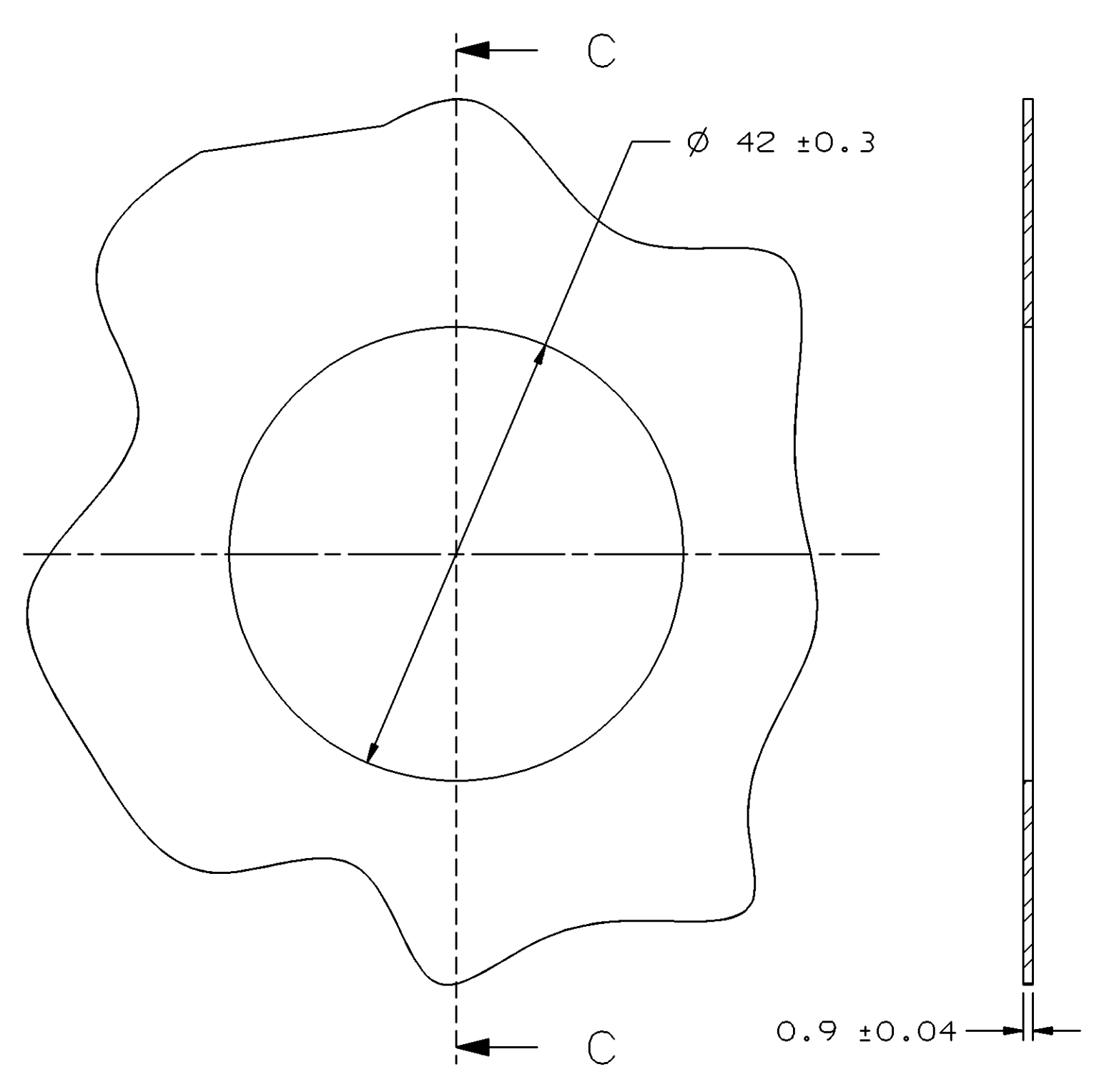
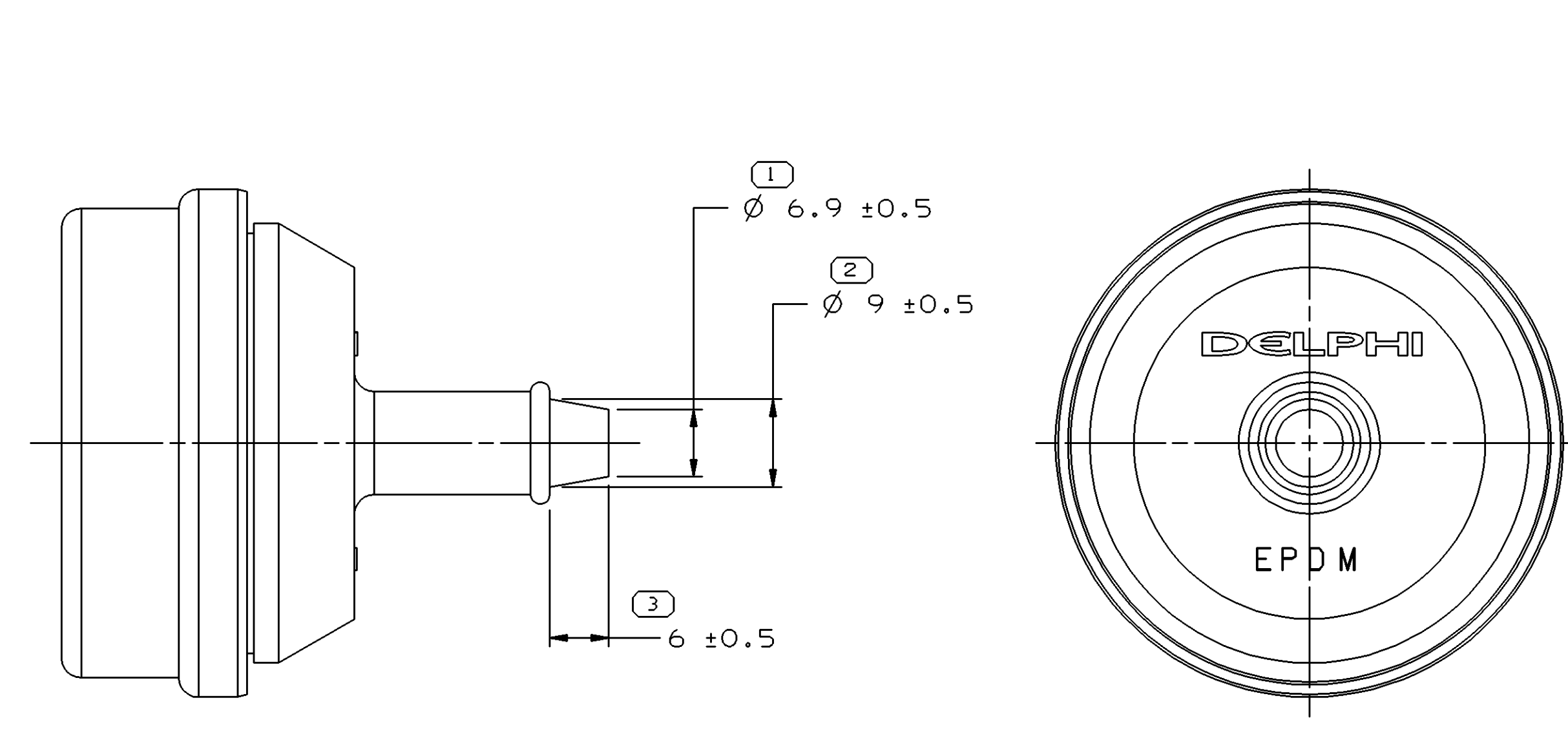


SYMBOL DEFINITION		TOTAL NO OF INSPECTIONS REQUIRED	
A DIMENSION WITHOUT AN INSPECTION REPORT SYMBOL DOES NOT REQUIRE INSPECTION. IT MAY BE CONTROLLED ON THE INDIVIDUAL COMPONENT DRAWING.		12	
	LAST NO. USED	12	

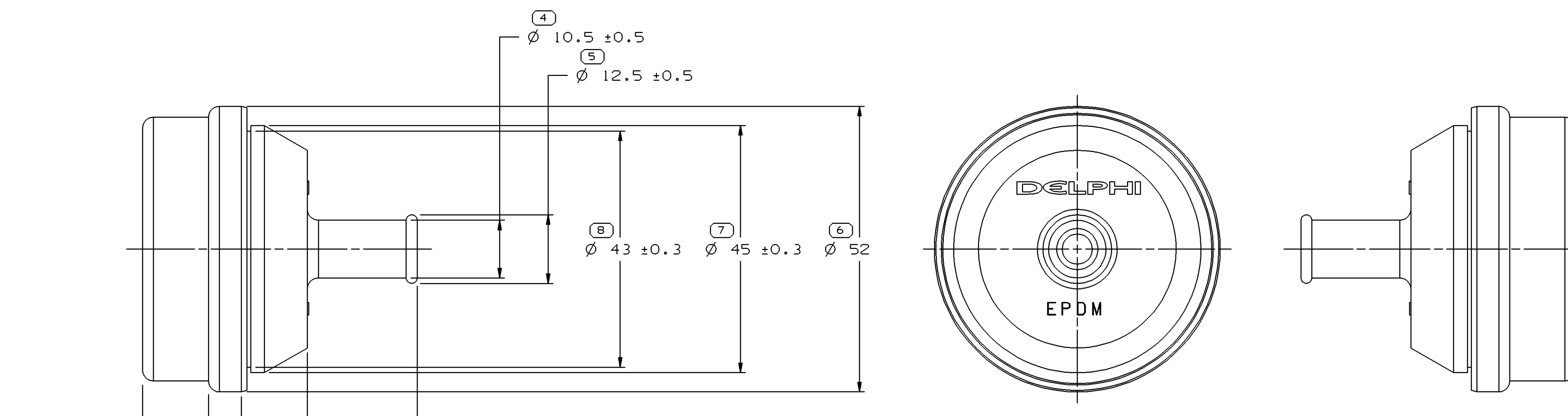
DWO STATUS				REVISION HISTORY				AUTH	DR	APVD	APVD
DATE	STG	REV	N/P	CHG	ZONE	DESCRIPTION					
05JN02	R	01	-	-		CREATED PD	226169	RH	RH	JDV	
16FE05	R	02	-	-		ALL PARTS - ADDED PROCESSING NOTES & REVISED MAT'L SPEC	264730	JRA	JVM	JAS	



SECTION C-C  
MOUNTING HOLE INFORMATION



TYPE 102  
SAME AS TYPE 101  
EXCEPT AS SHOWN



TYPE 101

NOTES

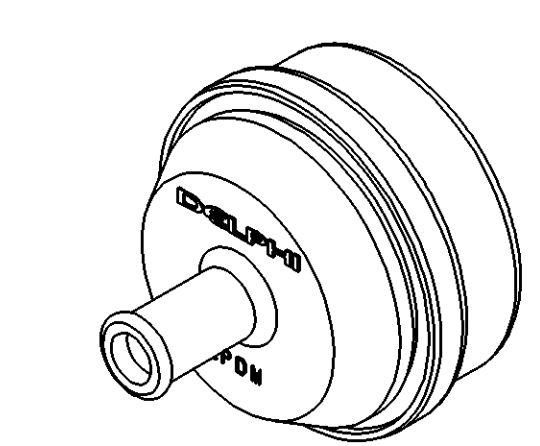
- UNLESS OTHERWISE SPECIFIED AND/OR INDICATED:  
DIMENSIONS ARE TO FACE OF VIEW SHOWN AND AUTOMATICALLY ROUNDED BY COMPUTER FOR INSPECTION (SEE MATH MODEL FOR PRECISE DIMENSIONS). FOR ALL OTHER DIMENSIONS NOT SHOWN BUT REQUIRED FOR TOOL BUILD, SEE MATH MODEL FOR PRECISE TOOL PATH DATA.
- MATERIAL RECYCLING CODE PER ISO 11469. (2.3)X(0.1) CHARACTERS AS SHOWN TO BE LOCATED ON ANY EXTERIOR SURFACE.
- REFERENCE MATING COMPONENTS OR EQUIVALENT:  
ACOUSTIC INSERT 12191565
- PART IS SYMMETRICAL ABOUT CENTERLINES EXCEPT AS NOTED.
- SEALING SURFACES MUST BE FREE OF SINKS, NFO'S, VOIDS, KNIT/FLOW LINES, ETC.
- (2.3)X(0.1) DELPHI CORPORATE BRAND TO BE LOCATED ON ANY EXTERIOR SURFACE, PREFERABLY VISIBLE AT FINAL ASSEMBLY. OPTIONAL CONSTRUCTION TO BE "PED" OR NO LOGO.
- THIS GROMMET IS DESIGNED FOR USE ON A Ø 6 MM MIN HARNESS BUNDLE.
- THIS GROMMET TO BE USED WITH HARNESS BUNDLE SMOOTH TAPE WRAPPED USING 5 MM TAPE HAVING NO SLITS ON EDGES.

PROCESSING NOTES

- THE FOLLOWING NUMBER IS TO BE PUT ON THE PRODUCT DRAWING AS THE MAXIMUM ALLOWABLE STRETCH DIMENSION: 22MM AS MEASURED IN THE FOLLOWING FASHION:



PART NO	REV	N/P	STATUS	TYPE	VOL	CM³
15336270	B2	-		102	20.130	
12191566	A2	-		101	19.913	



DWO TYPE		PART DRAWING	
STYLE		DISTR CODE	D
VOLUME (CM³)	SEE CHART		
UNLESS OTHERWISE SPECIFIED			
THIS DOCUMENT IS IN ACCORDANCE WITH ASME Y14.5M-1994 AS AMENDED BY THE 2018 DIMENSIONING AND TOLERANCING ADDENDUM - 1997. ALL GEOMETRIC TOLERANCES AND RELATED DATUM APPLIES TO ALL DIMENSIONS UNLESS OTHERWISE SPECIFIED.			
MATERIAL DOES NOT APPLY RELATIONSHIP BETWEEN FEATURES IS ESTABLISHED BY ORIENTATION OR LOCATION TOLERANCES. SEPARATE POSITION DATUMS MAY BE OBTAINED SEPARATELY. REGARDLESS OF DATUM REFERENCE.			
ALL DIMENSIONS ARE IN MILLIMETERS			
DIMENSIONAL RANGE (MM)		CHART C	
FROM	> 0	> 25	> 60
TO	<= 0	<= 25	<= 60
TOLERANCE UNLESS OTHERWISE SPECIFIED			
±0.3		±0.5	±0.6
ANGULAR TOLERANCE 12°			
THIRD ANGLE PROJECTION		DO NOT SCALE	
USE MATH DATA		UNGRAPHS	

DELPHI	
DELPHI PACKARD ELECTRIC SYSTEMS	
WARREN, OH	
DR	DATE
APVD1 R. HERMOSILLO	05JN02
APVD2 R. HERMOSILLO	05JN02
APVD3 J. DEL VAL	06JN02
APVD4	
APVD5	
SUBSTANCES OF CONCERN AND RECYCLED CONTENT PER DELPHI 10949001	
MATERIAL M4433002	
DRAWING NAME TAXI GROM	
DRAWING NUMBER 12191567	
SIZE A0	SCALE 2:1
FRAME NO 1	SHEET NO 1
OF 2	REV 02

## X-ON Electronics

Largest Supplier of Electrical and Electronic Components

*Click to view similar products for [Automotive Connectors](#) category:*

*Click to view products by [APTIV](#) manufacturer:*

Other Similar products are found below :

[003-018-000](#) [60403001](#) [60993906-B](#) [M902-2131](#) [M902-2161](#) [72.330.1035.1](#) [73.353.4028.0](#) [F119300-B](#) [F166900](#) [F258300-B](#) [F358300-B](#)  
[F407400](#) [F444110](#) [F487000](#) [F509500B-B](#) [827153-1](#) [8N1515-32-24P](#) [9-1326729-8](#) [925474-1](#) [928905-1](#) [964562-4](#) [968782-1](#) [GT17SA-8DS-](#)  
[HU](#) [98891-1012](#) [98947-1016](#) [12004475-L](#) [12010290](#) [12010309-B](#) [12015454](#) [12020219-B](#) [12020308](#) [12041318-B](#) [12052225-L](#) [12052466](#)  
[12059125](#) [12064869](#) [12004327-B](#) [12010503-B](#) [12015308](#) [12015384](#) [12015909](#) [1-21030-1](#) [12041254](#) [12041318](#) [12047946-B](#) [12047957](#)  
[12047957-L](#) [12059473](#) [12066261](#) [12110546](#)