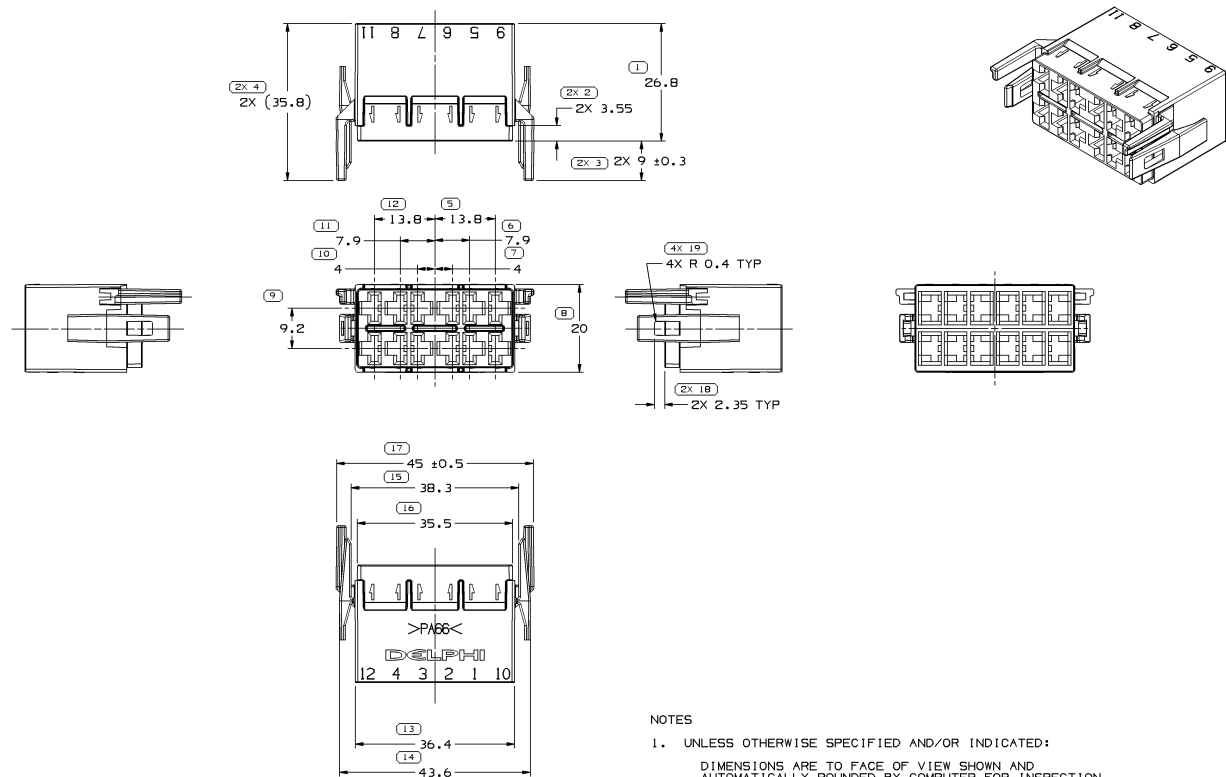


12 11 10 9 8 7 6 5 4 3 2 1

SYMBOL DEFINITION		MISSING SYMBOLS	
A DIMENSION WITHOUT AN INSPECTION REPORT SYMBOL DOES NOT REQUIRE INSPECTION. IT MAY BE CONTROLLED ON THE INDIVIDUAL COMPONENT DRAWING.	TOTAL NO OF INSPECTIONS REQUIRED	NO MISSING SYMBOL NUMBER	
	19		
LAST NO. USED	19		

DWG STATUS				REVISION HISTORY				AUTH		DR		AP/ID	
DATE	STG	REV	N/P	CHG	ZONE								
19N05	R	01	-	-	-	15466335 - WAS SEPARATE DWG: 2X 35.92 WAS 32, 23.37 WAS 19.5, 3.55 WAS 3.5, 36.14 WAS 36.21 AND REVISED EXTENSION LINES OF DIM 6, 13529700 & 13529701 - RELEASED				268062	AMG	AMG	JPC
03M06	R	02	-	-	-	ALL PARTS - REVISED TERMINAL CAVITIES UPDATED DIMENSIONS AND NOTES				277148	MM	MM	SAN
19JL06	R	03	-	-	-	ALL PARTS - UPDATED TOL'S 2 PLCS, ADDED 4X R 0.4 TYP, CORRECTED DRAFT AND PARTING LINES 4 PLACES				282369	MM	MM	SAN
090C06	R	04	-	-	-	ALL PARTS - ADDED MATING FORCE NOTE				283624	MAC	MAC	SAN



- NOTES
- UNLESS OTHERWISE SPECIFIED AND/OR INDICATED:
    - DIMENSIONS ARE TO FACE OF VIEW SHOWN AND AUTOMATICALLY ROUNDED BY COMPUTER FOR INSPECTION (SEE MATH MODEL FOR PRECISE DIMENSIONS). FOR ALL OTHER DIMENSIONS NOT SHOWN BUT REQUIRED FOR TOOL BUILD, SEE MATH MODEL FOR PRECISE TOOL PATH DATA.
  - MATERIAL RECYCLING CODE PER ISO 11469. (2,3)X(0,1) CHARACTERS AS SHOWN TO BE LOCATED ON ANY EXTERIOR SURFACE.
  - SEALING CODE 0 - UNSEALED
  - MATING COMPONENTS OR EQUIVALENT: CARLING SWITCHES TERMINAL: 12015828
  - (2,3)X(0,1) DELPHI CORPORATE BRAND TO BE LOCATED ON ANY EXTERIOR SURFACE, PREFERABLY VISIBLE AT FINAL ASSEMBLY. OPTIONAL CONSTRUCTION FOR EXISTING TOOLING MAY BE "PED".
  - ALL CONNECTORS EXCEED 135N MATING FORCE.

PART NO	REV	N/P	STATUS	MATERIAL SPECIFICATION AND COLOR	VOLUME CM <sup>3</sup>
13529701	02	AB		M3592006 PA66 HS 1M YEL	9.821
13529700	02	AB		M3592011 PA66 HS 1M WHI	9.821
15466335	04	AB		M3592001 PA66 HS 1M BLK	9.821

DIMENSIONAL TOLERANCE (MM)		SURFACE FINISH	
FROM	TO	> 30	> 400
> 0	> 20	> 70	> 100
> 20	> 30	> 100	> 150
> 30	> 40	> 150	> 200
> 40	> 50	> 200	> 250
> 50	> 60	> 250	> 300
> 60	> 70	> 300	> 400
TOLERANCE UNLESS OTHERWISE SPECIFIED		HOLE SURFACE TOLERANCE	
± 0.15	± 0.2	± 0.4	± 0.8
HOLE SURFACE TOLERANCE		HOLE SURFACE TOLERANCE	
± 0.05		± 0.1	

DWG TYPE		PART DRAWING	
STYLE	SEE CHART	DISTR CODE	D
UNLESS OTHERWISE SPECIFIED			
THIS DOCUMENT IS IN ACCORDANCE WITH ASME Y14.5M-1994 IS OWNED BY DELPHI OR ITS PARENT, FORD MOTOR COMPANY. NO REPRODUCTION OR TRANSMISSION OF ANY KIND IS PERMITTED WITHOUT THE WRITTEN PERMISSION OF DELPHI. ALL DIMENSIONS AND TOLERANCES ARE IN MILLIMETERS UNLESS OTHERWISE SPECIFIED. DIMENSIONS ARE TO FACE UNLESS OTHERWISE SPECIFIED. DIMENSIONS ARE TO FACE UNLESS OTHERWISE SPECIFIED. DIMENSIONS ARE TO FACE UNLESS OTHERWISE SPECIFIED. DIMENSIONS ARE TO FACE UNLESS OTHERWISE SPECIFIED.			
REFERENCE	THIRD ANGLE PROJECTION	DO NOT SCALE	USE MATH DATA

**DELPHI**  
DELPHI PACKARD ELECTRIC SYSTEMS  
WARREN, OH

DR	DATE
AP001 ANDRES MENDEZ	10M05
AP002 ANDRES MENDEZ	20M05
AP003 JAMES P. CYKON	23M05
AP004	

MATERIAL: SUBSTANCE OF CONCERN AND RECYCLED CONTENT PER DELPHI 10942001

SEE CHART

DRAWING NAME: TAXI CONN F W/P 480

DRAWING NUMBER: 13529702

SIZE: A1  
SCALE: 2:1  
SHEET NO: 1 OF 1  
REV: R  
N/P: -

12 11 10 9 8 7 6 5 4 3 2 1

## X-ON Electronics

Largest Supplier of Electrical and Electronic Components

*Click to view similar products for [Automotive Connectors](#) category:*

*Click to view products by [APTIV](#) manufacturer:*

Other Similar products are found below :

[003-018-000](#) [60403001](#) [60993906-B](#) [629515004020001](#) [M902-2131](#) [M902-2161](#) [72.330.1035.1](#) [73.353.4028.0](#) [F119300-B](#) [F166900](#)  
[F258300-B](#) [F358300-B](#) [F407400](#) [F444110](#) [F487000](#) [F509500B-B](#) [827153-1](#) [8N1515-32-24P](#) [9-1326729-8](#) [925474-1](#) [928905-1](#) [964562-4](#)  
[968782-1](#) [GT17SA-8DS-HU](#) [98891-1012](#) [98947-1016](#) [12004475-L](#) [12010290](#) [12010309-B](#) [12015454](#) [12020219-B](#) [12020308](#) [12041318-B](#)  
[12052225-L](#) [12052466](#) [12059125](#) [12064869](#) [12004327-B](#) [12010503-B](#) [12015308](#) [12015384](#) [12015909](#) [1-21030-1](#) [12041254](#) [12041318](#)  
[12047946-B](#) [12047957](#) [12047957-L](#) [12059473](#) [12066261](#)