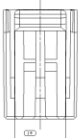
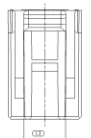
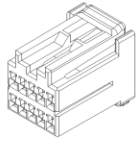
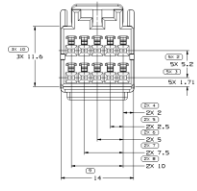
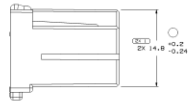


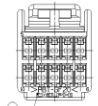
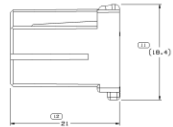
SYMBOL DEFINITION		MISSING SYMBOLS		REVISIONS	
A DIMENSION WITH AN INSPECTION REPORT SYMBOL (I) NEED NOT INCLUDE INSPECTION (I) BUT MUST BE CONTROLLED ON THE INDIVIDUAL COMPONENT DRAWING.		TOTAL NO. OF DIMENSIONS REQUIRED	NO MISSING SYMBOLS NUMBER	NO.	DESCRIPTION
		30		1	ISSUED FOR GENERAL DRAWING NO. 13600596
LAST REV.		14		2	ALL PARTS OF THIS DRAWING TO BE MADE TO THE LATEST REVISION OF THIS DRAWING UNLESS OTHERWISE SPECIFIED.
				3	ALL PARTS OF THIS DRAWING TO BE MADE TO THE LATEST REVISION OF THIS DRAWING UNLESS OTHERWISE SPECIFIED.



TYPE 100  
SAME AS TYPE 101  
EXCEPT AS SHOWN



TYPE 101



MATERIAL SPECIFICATION CODE OPTIONAL

- NOTES
- UNLESS OTHERWISE SPECIFIED AND/OR INDICATED DIMENSIONS ARE TO FACE OF VIEW SHOWN AND DIMENSIONALLY INDICATED DIMENSIONS FOR INSPECTION USE WITH HOLE FOR HELLER (I) INDICATED. DIMENSIONS SHOWN WITH HELLER (I) INDICATED ARE TO FACE OF HELLER (I) UNLESS OTHERWISE SPECIFIED.
  - MATERIAL SPECIFICATION CODE PER ISO 14406 (2012) 11 CHARACTERS AS SHOWN TO BE LOCATED ON ANY EXTERIOR SURFACE.
  - (D)X(D)X(L) DELPHI CORPORATE BRAND TO BE LOCATED ON ANY EXTERIOR SURFACE FOR IDENTIFICATION PURPOSES. OPTIONAL CODES FOR IDENTIFICATION SHALL BE NO LOGO.
  - MINIMUM EXTRACTION FORCE OF A TERMINAL 2.40N.
  - THIS PRODUCT IS NOT CATEGORIZED AS AN APPEARANCE ITEM. MINOR IMPERFECTIONS, INCLUDING BUT NOT LIMITED TO SURFACE DEFECTS, ARE PERMISSIBLE AS LONG AS THEY DO NOT AFFECT THE FIT, FORM, OR FUNCTION OF THE PART ARE PERMISSIBLE PER IOP 4.10-18.
  - FOR APPLICATION DATA SEE THE INDIVIDUAL APPLICATION DRAWINGS.

**DELPHI**  
GLOBAL POWER ELECTRONICS SYSTEMS

DATE	13600596
REV	
APP'D	
CHK'D	
DESIGN	
DRG	
ENG	
MANUFACTURING	
PRODUCTION	

REV	DATE	DESCRIPTION	BY	CHK
1	130621	ISSUE		
2	130621	ISSUE		

## X-ON Electronics

Largest Supplier of Electrical and Electronic Components

*Click to view similar products for [Automotive Connectors](#) category:*

*Click to view products by [APTIV](#) manufacturer:*

Other Similar products are found below :

[003-018-000](#) [60993906-B](#) [M902-2131](#) [M902-2161](#) [M902-2344](#) [72.330.1035.1](#) [73.353.4028.0](#) [F166900](#) [F358300-B](#) [F407400](#) [776880-1](#)  
[827153-1](#) [8N1515-32-24P](#) [9-1326729-8](#) [925474-1](#) [928905-1](#) [964562-4](#) [968782-1](#) [98891-1012](#) [12004475-L](#) [12020308](#) [12041318-B](#)  
[12052466](#) [12064869](#) [12015909](#) [1-21030-1](#) [12041254](#) [12041318](#) [12047946-B](#) [12110546-B](#) [12131792](#) [12084688](#) [12092346](#) [HD34-18-14PT](#)  
[HD46-24-23SN-059](#) [HDB36-24-16PN-059](#) [HDP26-24-9SE-L015](#) [12185280](#) [12185550](#) [12336-12](#) [12191172-B](#) [12S](#) [13545280](#) [13577943](#)  
[13681974](#) [13737722-B](#) [13830674](#) [13832576](#) [13849772](#) [13542772](#)