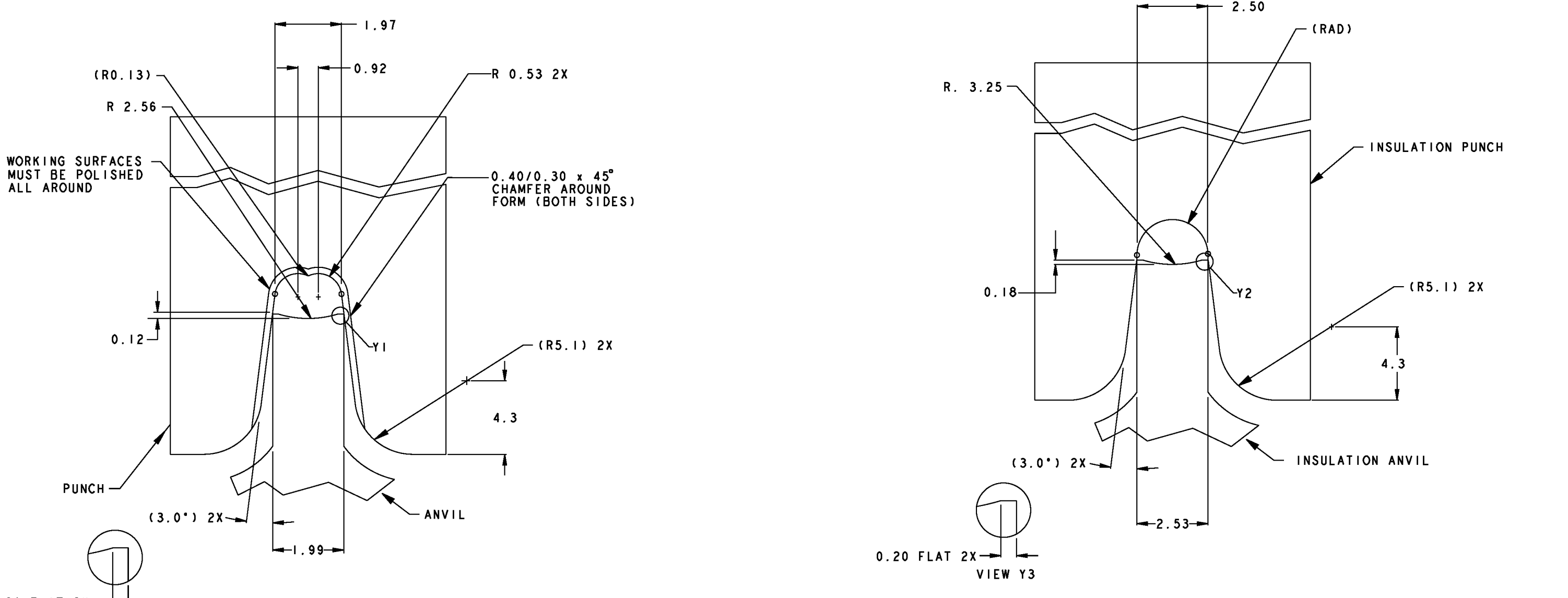
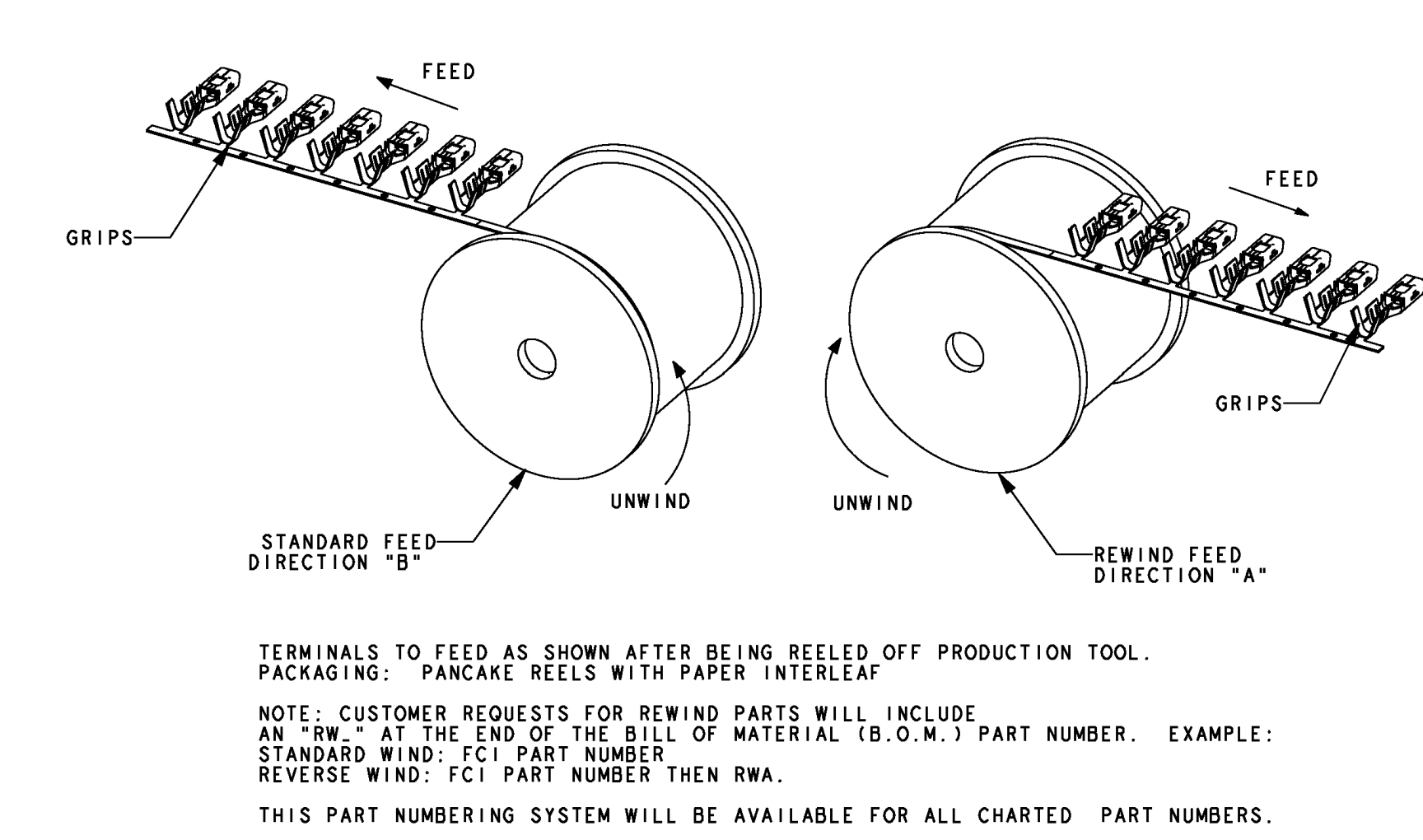
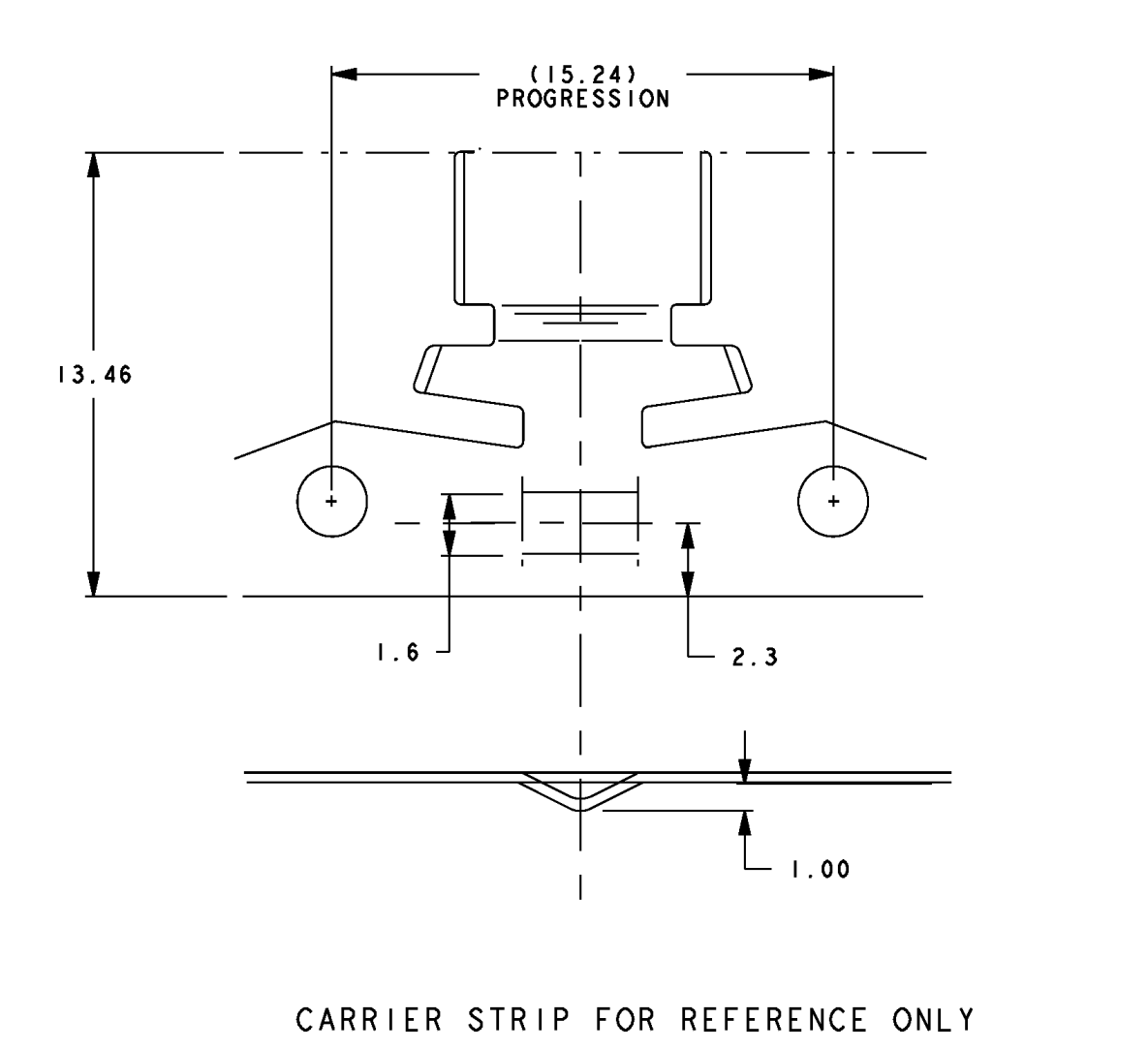
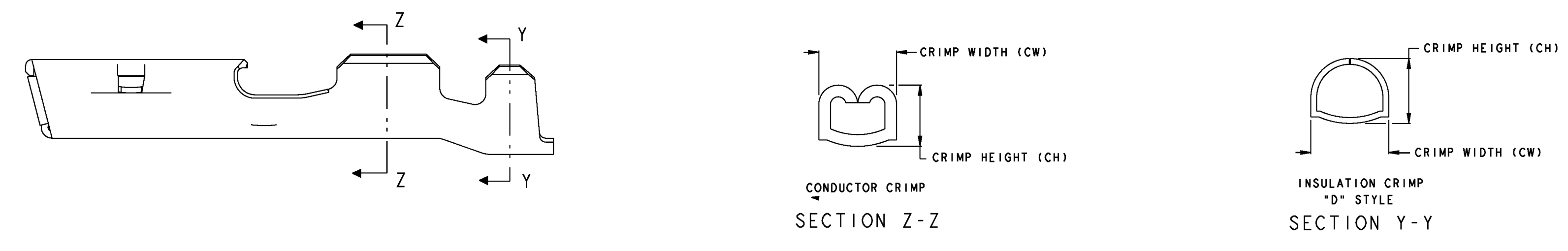
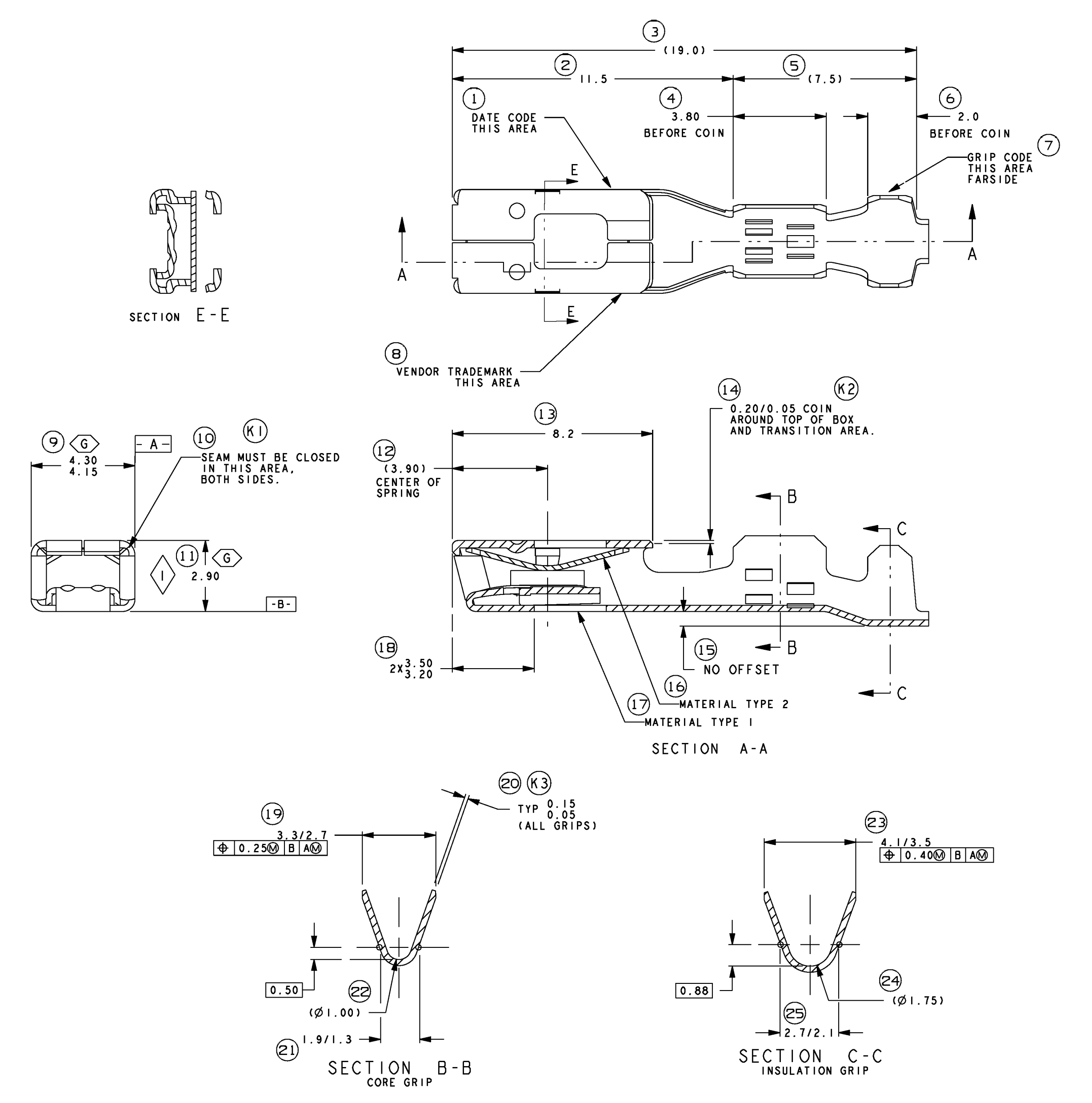


DWS STATUS:		ZONE:		REVISION HISTORY:		AUTH:		DR:		APVD:	
DATE	STG	REV	N/P	CHG	1386754 - WAS SEPARATE DRAWING:	424169	000	JAA	DAB	1	2
210C13	R	01	-	-	33122460 - RELEASED						

FCI PART NUMBER	GRIP CODE	WIRE SIZE		CONDUCTOR CH (SECT 2-7)		CONDUCTOR CH (SECT 7-1)		INSULATION CH (SECT 1-1)		INSULATION CH (SECT 7-1)	
		AWG	METRIC	(+/-0.05) AWG	(+/-0.05) AWG	(+/-0.10) AWG	(+/-0.10) METRIC	(+/-0.10) AWG	(+/-0.10) METRIC	(+/-0.10) AWG	(+/-0.10) METRIC
54001847	18	---	---	1.15	---	---	---	2.15	---	---	---
		20	---	1.05	---	2.00	---	---	---	---	---
		---	1.00	---	1.20	2.05	---	---	---	2.15	---
		---	0.75	---	1.10	---	---	---	---	2.00	---
---	---	0.50	---	1.00	---	---	---	---	1.90	---	



CRIMP TOOL INFORMATION (REF. ONLY)



- NOTES:**
- CONFORMS TO ALL APPLICABLE SECTIONS OF SAE/USCAR-2 REV. 3 EXCEPT TERMINAL BEND RESISTANCE SECTION 2.2 SAE/USCAR-12 REV. 2 SAE/USCAR-21 REV. 3 FORD SDS VER 11
  - MATERIALS**  
MATERIAL TYPE 1: C14530 Cu TO ASTM B-152 THICKNESS: 0.248±0.005 TENSILE STRENGTH: 372-442 MPa YIELD STRENGTH: 158-197 MPa MINIMUM ELONGATION: 2% IN 51 mm PLATING 100% HOT TIN DIP: 0.0005-0.0025 mm
  - MATERIAL TYPE 2: C17410 BeCu TO ASTM B-768 THICKNESS: 0.293±0.008 TENSILE STRENGTH: 655-682 MPa YIELD STRENGTH: 158-197 MPa MINIMUM ELONGATION: 7% IN 51 mm PLATING 100% HOT TIN DIP: 0.0005-0.0025 mm
  - THE APEX 2 & TERMINAL SYMMETRICAL ABOUT CENTERLINE AND CAN BE INSERTED 180° EXCEPT AS SHOWN.
  - DIMENSIONAL TOLERANCE:**  
1 PLACE ±0.25  
2 PLACE ±0.10  
ANGULAR ±1°
  - FOR CAVITY SPECIFICATION INFORMATION REFERENCE F. 11 DRAWING C15001 FOR UNSEALED CAVITY AND F. C. 1 DRAWING C15008 FOR SEALED CAVITY.
  - SEE USCAR DRAWING EWCA-001 FOR DIRECT CONNECT MATING BLADE INFORMATION.
  - ANNUAL QUALITY REQUIREMENTS:**  
FCI SPECIFICATION BAGA-021 INSTEAD OF ANNUAL LAYOUT & ANNUAL PV REQUIREMENTS OF QS-9000 SECTION 2
  - QUALITY ASSURANCE REQUIREMENTS:** 1 REQUIRED.
  - INDICATES IN PROCESS INSPECTION FOR MANUFACTURING DIMENSIONS OR SPECIFICATIONS: 3 REQUIRED.
  - 10) <G> DENOTES GAGE REQUIREMENTS FOR USER AND MANUFACTURER 2 REQUIRED

REV	DATE	BY	CHK	DESCRIPTION
11-0002	11/07/11	J	-	UPDATE VIEW, ADD "X" DIMS, REMOVE CHAMFERED METRIC WIRES
0102	08-07-01	H	-	REVISED PER BOM
0103	08-31-08	D	P-F	DIMENSION 12.841 RND 2.50
2	1	P-F	-	SECTION 12 CENTERLINE ADDED
0034	07-24-08	F	P-F	0.154-0.05 DIMENSION ADDED
1	1	F29	-	"T" TERRY 2X LOCATION CORRECTED
1	1	-	-	NOTES REVISED TO MATCH WIRE DIMS
0102	01-21-05	E	-	INITIAL RELEASE

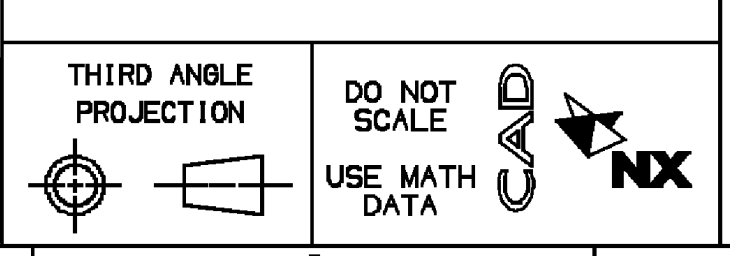
LAST BALLOON: 35 FCI PART NUMBER: 54001847 TERMINAL IS FOR MATT SEALED OR UNSEALED APPLICATIONS.

**NOTES**

1. UNLESS OTHERWISE SPECIFIED AND/OR INDICATED:  
DIMENSIONS ARE TO FACE OF VIEW SHOWN AND AUTOMATICALLY ROUNDED BY COMPUTER FOR INSPECTION (SEE MATH MODEL FOR PRECISE DIMENSIONS). FOR ALL OTHER DIMENSIONS NOT SHOWN BUT REQUIRED FOR TOOL BUILD, SEE MATH MODEL FOR PRECISE TOOL PATH DATA.

54001847/F097700	J	13866754	01	AF	-	-	M6554H89	M6552H80
54001847RWA/F097700RWA	J	-	-	-	33122460	01	13866754	-
PART NUMBER	REV	PART NUMBER	REV	N/P	REWIND PART NUMBER	REV	N/P	BASE MAT'L SPEC
MVL					DELPHI			SPRING MAT'L SPEC

TOLERANCE UNLESS OTHERWISE SPECIFIED:  
DECIMAL: ANGULAR 12°  
TWO PLACE SEE DRAWING  
THREE PLACE SEE DRAWING



**DELPHI**  
DELPHI PACKARD ELECTRICAL/ELECTRONIC ARCHITECTURE  
WARREN, OH  
COPYRIGHT 2013 DELPHI CORPORATION AND/OR ITS AFFILIATES. ALL RIGHTS RESERVED.

THIS DRAWING IS THE PROPERTY OF DELPHI CORPORATION AND CONTAINS DELPHI CONFIDENTIAL INFORMATION. THE REPRODUCTION, DISTRIBUTION AND UTILIZATION OF THIS DOCUMENT OR ITS CONTENTS OR DATA AS WELL AS COMMUNICATION OF ANY CONTENT TO OTHERS, WITHOUT EXPRESS AUTHORIZATION, IS PROHIBITED.

DWG TYPE: PART DRAWING

DATE: 210C13

APV01	CARLOS DELGADILLO	210C13
APV02	J. S. ALVARADO	210C13
APV03	DANIEL A. BUCCINO	210C13
APV04		

THIS DOCUMENT IS IN ACCORDANCE WITH ASME Y14.5M-1994 AS MODIFIED BY THE 2003 SUPPLEMENT AND TELEPHONIC ADDENDUM-2001. SEPARATE PATTERNS OF FEATURES MAY BE SHOWN SEPARATELY, IRRESPECTIVE OF DATUM REFERENCES.

ALL DIMENSIONS ARE IN MILLIMETERS

DRAWING NUMBER: 33125476

SHEET NO: 1 OF 1

## X-ON Electronics

Largest Supplier of Electrical and Electronic Components

*Click to view similar products for [Automotive Connectors](#) category:*

*Click to view products by [APTIV](#) manufacturer:*

Other Similar products are found below :

[003-018-000](#) [60403001](#) [60993906-B](#) [629515004020001](#) [M902-2131](#) [M902-2161](#) [72.330.1035.1](#) [73.353.4028.0](#) [F119300-B](#) [F166900](#)  
[F258300-B](#) [F358300-B](#) [F407400](#) [F444110](#) [F487000](#) [F509500B-B](#) [827153-1](#) [8N1515-32-24P](#) [9-1326729-8](#) [925474-1](#) [928905-1](#) [964562-4](#)  
[968782-1](#) [GT17SA-8DS-HU](#) [98891-1012](#) [98947-1016](#) [12004475-L](#) [12010290](#) [12010309-B](#) [12015454](#) [12020219-B](#) [12020308](#) [12041318-B](#)  
[12052225-L](#) [12052466](#) [12059125](#) [12064869](#) [12004327-B](#) [12010503-B](#) [12015308](#) [12015384](#) [12015909](#) [1-21030-1](#) [12041254](#) [12041318](#)  
[12047946-B](#) [12047957](#) [12047957-L](#) [12059473](#) [12066261](#)