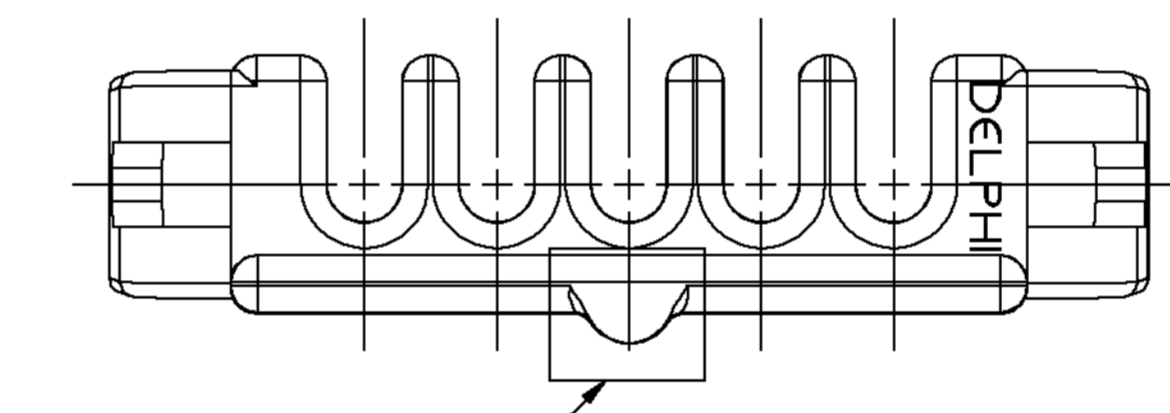
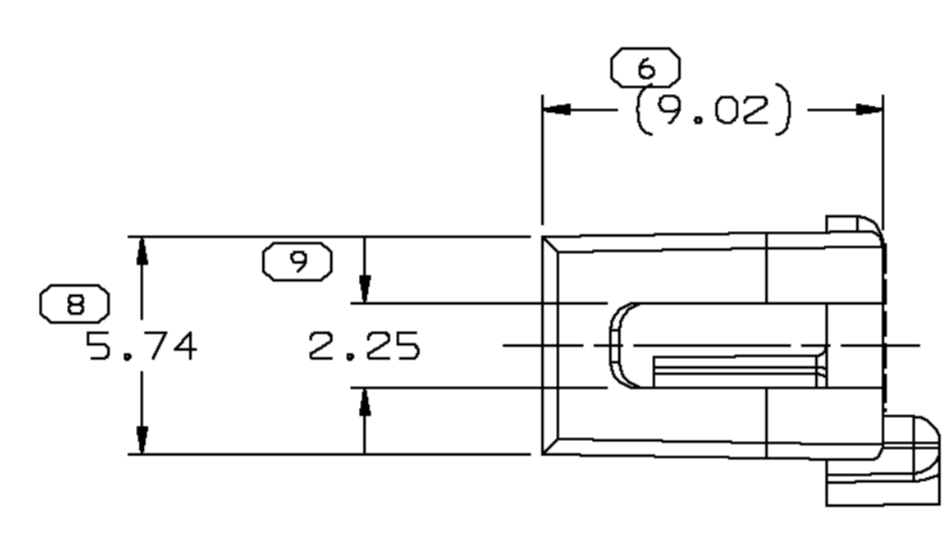
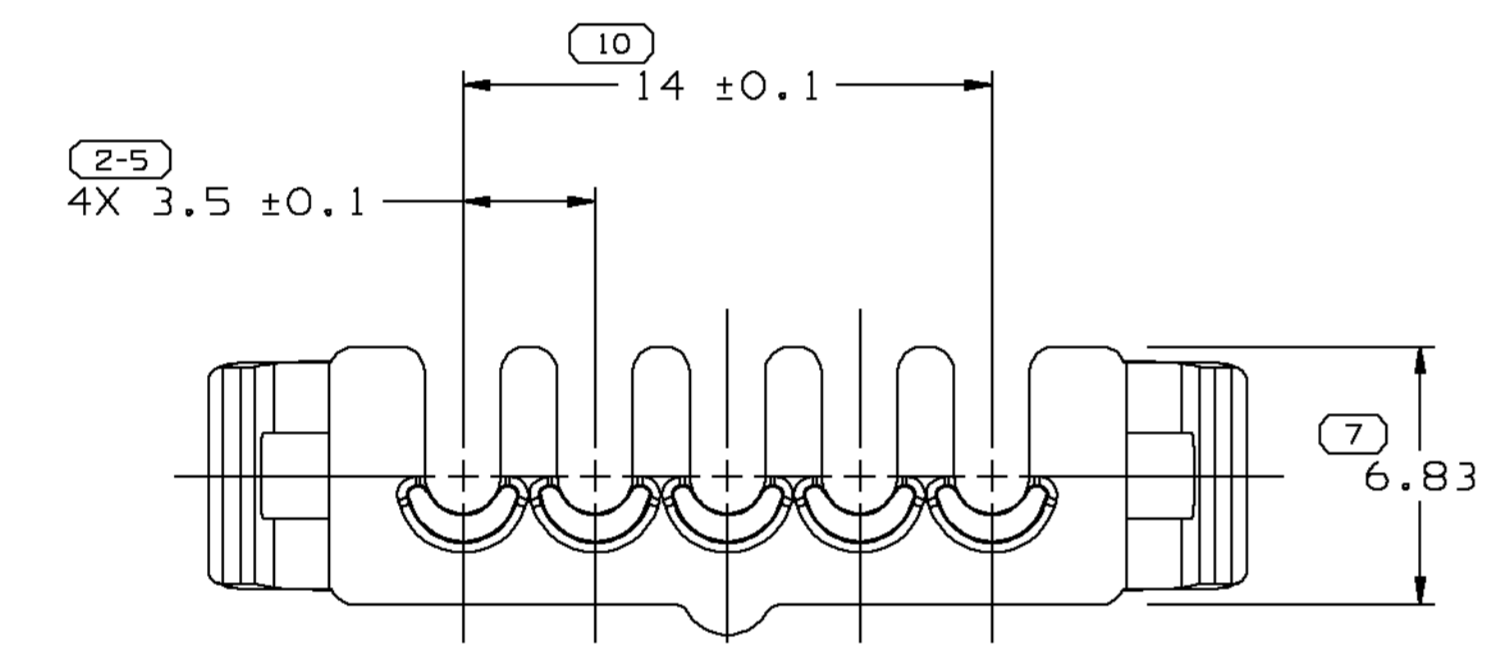
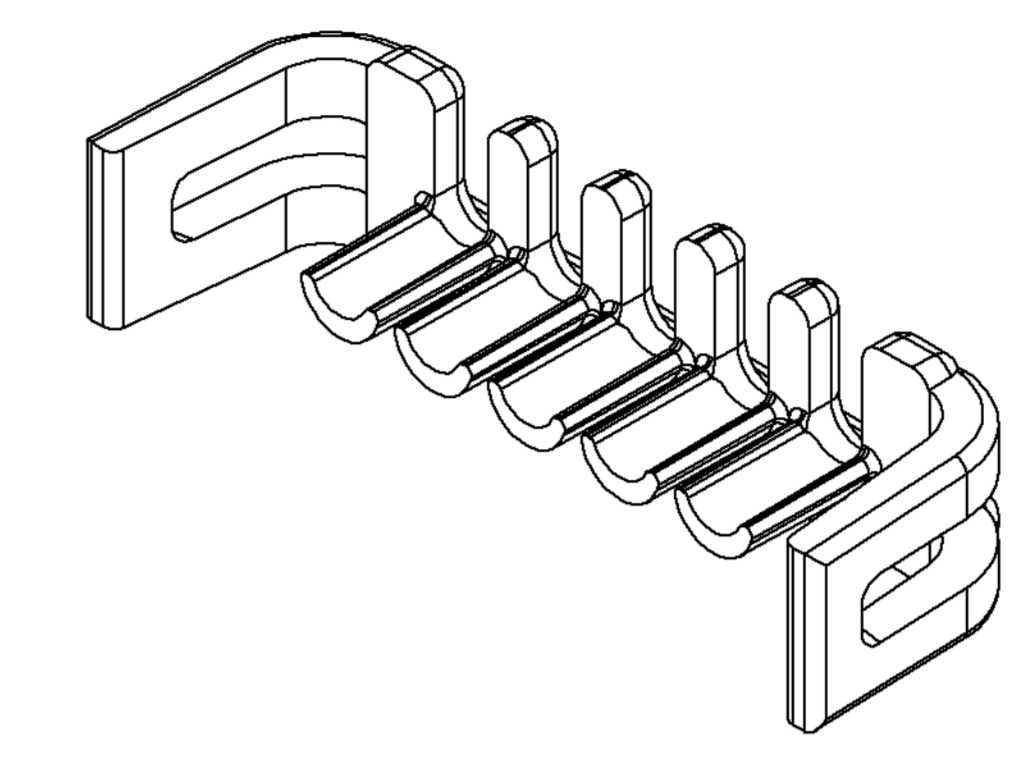
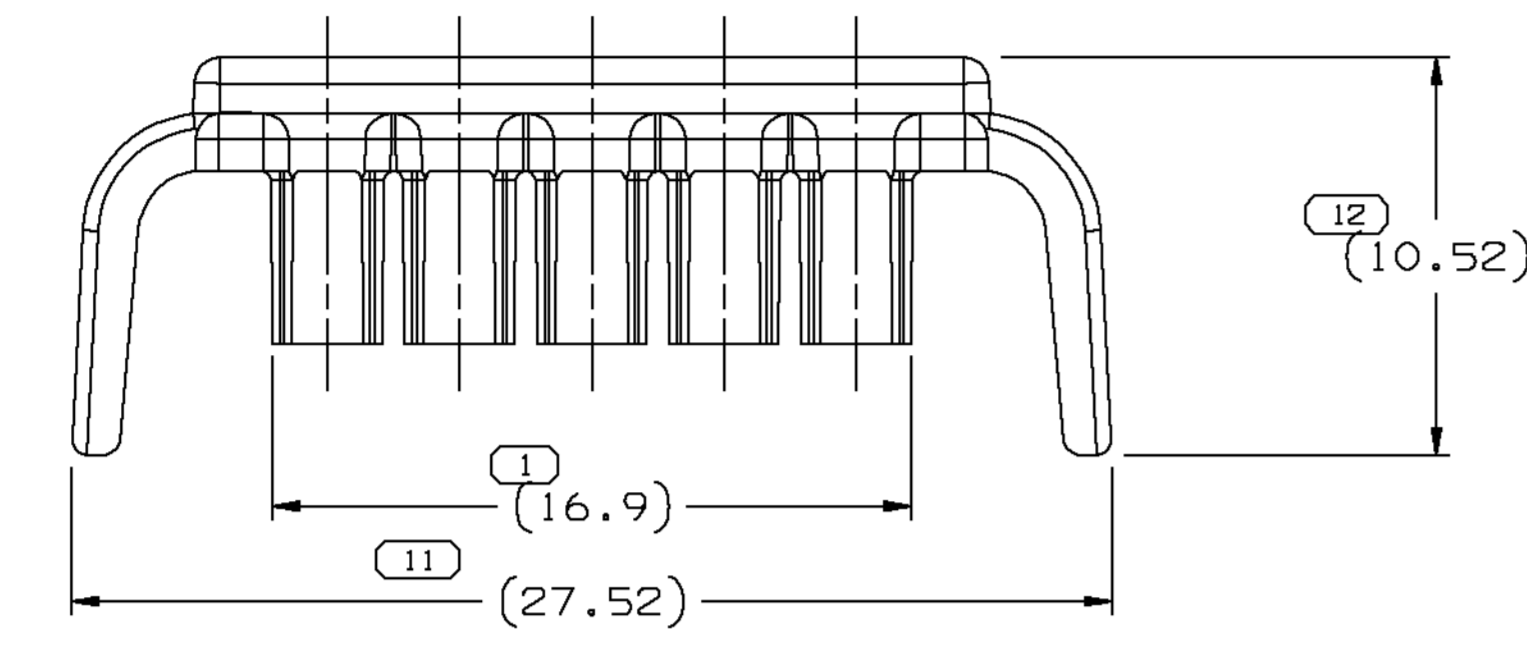
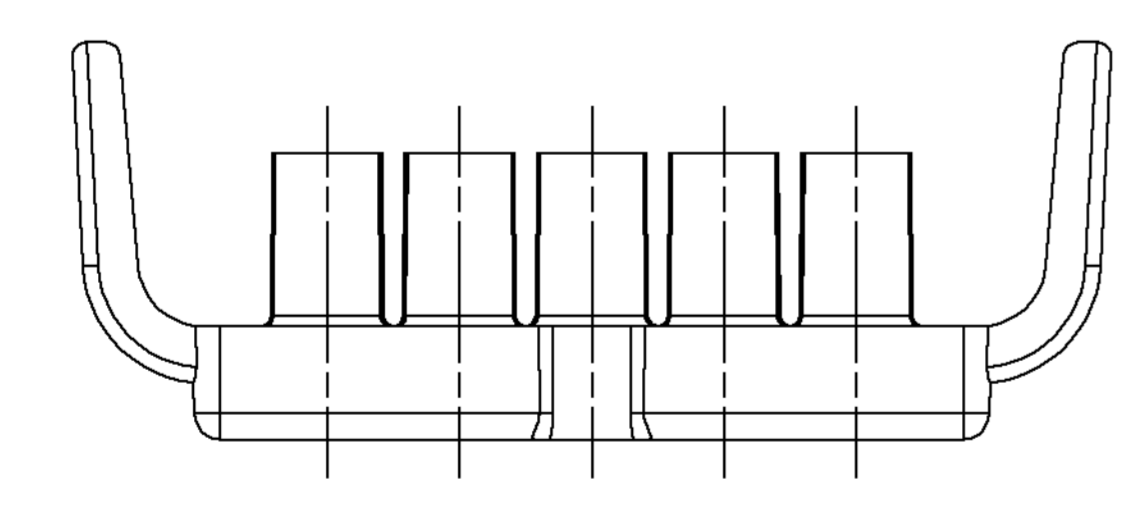


SYMBOL DEFINITION		MISSING NUMBERS	
THE NUMBER INSIDE THE SYMBOL CORRESPONDS TO THE NUMBER ON THE INSPECTION REPORT FOR THIS DRAWING/PART NUMBER	TOTAL NO. OF SYMBOLS ON DRAWING	9	
	LAST NO. USED	12	

DWG STATUS				REVISION HISTORY				AUTH	DR	CK	APVD
DATE	STG	REV	CHG	N/P	ZONE	CLEARED REV.	COLUMN/NEW FORMAT	204375	SHH	SHH	RF
01NO00	R	C3	-	-			CHANGED MATL. SPEC # FOR STANDARDIZATION				



EJECTOR PIN INDENTATION ACCEPTABLE IN THIS AREA



NOTES

- UNLESS OTHERWISE SPECIFIED AND/OR INDICATED: DIMENSIONS ARE TO FACE OF VIEW SHOWN AND AUTOMATICALLY ROUNDED BY COMPUTER FOR INSPECTION. (SEE MATH MODEL FOR PRECISE DIMENSIONS.) FOR ALL OTHER DIMENSIONS NOT SHOWN BUT REQUIRED FOR TOOL BUILD, SEE MATH MODEL FOR PRECISE TOOL PATH DATA.
- MATING COMPONENTS OR EQUIVALENT: CONNECTOR 15305556
- THIS PART IS NOT CONTROLLED FOR AUTOMATIC FEEDING.

DELPHI Automotive Systems			
MATERIAL SPEC PM003571 01B PA6 (GB20 + GF10) HS-ORA			
SUBSTANCES OF CONCERN AND RECYCLED CONTENT PER DELPHI-A 01949001			
PART DRAWING			DISTR CODE D
CODE NUMBER 6900	DWG DATE 01MY97	SCALE 5:1	
DC SPEC	STYLE	VOLUME cm³ 0.351	
PART GEOMETRY 3D SOLID	UNLESS OTHERWISE SPECIFIED: THIS DOCUMENT IS IN ACCORDANCE WITH ASME Y14.5M - 1994 AS AMENDED BY THE GM GLOBAL DIMENSIONING AND TOLERANCING ADDENDUM - 1997. ALL GEOMETRIC TOLERANCES AND RELATED DATUMS APPLY RFS. RULE #1 (PERFECT FORM AT MMC) DOES NOT APPLY WHEN RELATIONSHIP BETWEEN FEATURES IS ESTABLISHED BY ORIENTATION OR LOCATION TOLERANCES. SEPARATE POSITION CALLOUTS MAY BE GAGED SEPARATELY REGARDLESS OF DATUM REFERENCES.		
UG CHANGE RESTRICTED NO MANUAL CHANGES	REFERENCE	DR B. NAGY	DATE 01AP96
COPY OF MATH DATA DO NOT SCALE		APVD1 M. MCCALL	01MY97
		APVD2 M. MCCALL	01MY97
		APVD3 EDWARD ARANGO	03JN97
		APVD4	
		APVD5	
METRIC UNLESS OTHERWISE SPECIFIED, ALL DIMENSIONS ARE IN MILLIMETERS			
THIRD ANGLE PROJECTION	DRAWING NAME TPA 5W GT 150		

FROM	0	> 20	> 30	> 70	> 100	> 150	> 200	> 250	> 300	400	PROCESS SENSITIVE DIMENSION
TO	20	30	70	100	150	200	250	300	400		
DIMENSIONAL RANGE (MM)											
TOLERANCE UNLESS OTHERWISE SPECIFIED											
±0.15 ±0.2 ±0.3 ±0.4 ±0.5 ±0.6 ±0.8 ±1 ±1.2											
DIMENSIONS ENCLOSED IN () INDICATE REFERENCE DIMENSIONS AND NO TOLERANCE LIMITS ARE ESTABLISHED											
ANGULAR TOLERANCE ± 2°											
SHARP CORNER TOLERANCE											

SHEET NUMBER	DRAWING NUMBER	DWG STATUS	SIZE
1 OF 1	15305557	R C3 -	A0

X-ON Electronics

Largest Supplier of Electrical and Electronic Components

Click to view similar products for [Automotive Connectors](#) category:

Click to view products by [APTIV](#) manufacturer:

Other Similar products are found below :

[003-018-000](#) [60403001](#) [60993906-B](#) [629515004020001](#) [M902-2131](#) [M902-2161](#) [72.330.1035.1](#) [73.353.4028.0](#) [F119300-B](#) [F166900](#)
[F258300-B](#) [F358300-B](#) [F407400](#) [F444110](#) [F487000](#) [F509500B-B](#) [827153-1](#) [8N1515-32-24P](#) [9-1326729-8](#) [925474-1](#) [928905-1](#) [964562-4](#)
[968782-1](#) [GT17SA-8DS-HU](#) [98891-1012](#) [98947-1016](#) [12004475-L](#) [12010290](#) [12010309-B](#) [12015454](#) [12020219-B](#) [12020308](#) [12041318-B](#)
[12052225-L](#) [12052466](#) [12059125](#) [12064869](#) [12004327-B](#) [12010503-B](#) [12015308](#) [12015384](#) [12015909](#) [1-21030-1](#) [12041254](#) [12041318](#)
[12047946-B](#) [12047957](#) [12047957-L](#) [12059473](#) [12066261](#)