



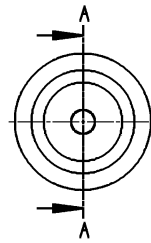


KEY PRODUCT CHARACTERISTICS

 SAFETY/COMPLIANCE	 FIT/FUNCTION	TOTAL ON DRAWING	0	
 S/C CHECKPOINTS	 F/F CHECKPOINTS	LAST NO. USED	0	
NO & TYPE	DESCRIPTION	RATIONALE	PTS	ZONE
-	-	-	-	-

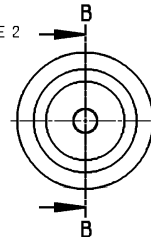
TYPE 1



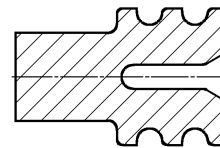
TOOL SEPARATION / INJECTION POINT PERMITTED
ON TWO EDGES MAX.
WZG.-TRENNUNG / ANSPRITZUNG
AN MAX. 2 KANTEN ZUL.

ANTI STICK RIP MAY BE DISRUPTED
ABSTANDSRING KANN UNTERBROCHEN SEIN

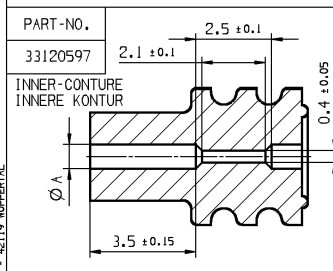
TYPE 2



B-B



D 10:1



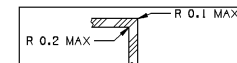
PART-NO.	PART-REV	DATE	TYPE	MATERIAL	COLOR FARBE	CABLE Ø	CAVITY Ø	DIMENSION MASS A ±0.10	MASS MASSE GR
15344938	03	25JUN99	1	SILICONE RUBBER WITH OIL CONTENT SILIKON MIT ÖLANTEIL	BLUE	1.2 - 1.6	4+0.1	0.8	0.05
15339560	03	25JUN99	1	SILICONE RUBBER WITH OIL CONTENT SILIKON MIT ÖLANTEIL	RED	1.7 - 2.1	4+0.1	1.3	0.05
10720807	03	25JUN99	1	SILICONE RUBBER WITH OIL CONTENT SILIKON MIT ÖLANTEIL	YELLOW	2.2 - 2.4	4+0.1	1.6	0.05
10720811	03	25JUN99	2	SILICONE RUBBER WITH OIL CONTENT SILIKON MIT ÖLANTEIL	GREEN	-	4+0.1	-	0.05
13735534	01	15OCT08	2	SILICONE RUBBER WITH OIL CONTENT SILIKON MIT ÖLANTEIL	WHITE	-	4+0.1	-	0.05
13735531	01	15OCT08	1	SILICONE RUBBER WITH OIL CONTENT SILIKON MIT ÖLANTEIL	GREY	1.7 - 2.1	4+0.1	1.3	0.05
13735532	01	15OCT08	1	SILICONE RUBBER WITH OIL CONTENT SILIKON MIT ÖLANTEIL	BLACK	1.7 - 2.1	4+0.1	1.3	0.05
33120597	01	15DEC11	1	SILICONE RUBBER WITH OIL CONTENT SILIKON MIT ÖLANTEIL	YELLOW	0.8 - 1.2	4+0.1	0.8	0.05

REMARKS

- DIMENSIONS IN MM
- NOT DIMENSIONED RADIUS R 0.2
- TYPE 2 SAME GEOMETRIE LIKE TYPE 1 EXCEPT AS SHOWN
- BURRS; FLASHES AND INJECTION POINTS MAX. 0.12 THICKNESS; 0.4 HIGHT

BEMERKUNG

- MASSE IN MM
- NICHT BEMASSTE RADIIEN R 0.2
- TYP 2 HAT GLEICHE GEOMETRIE WIE TYP 1 MIT AUSNAHME DER DARGESTELLTEN
- GRATE, HAUEU UND ANSPRITZPUNKTE MAX. 0.12 DICK; 0.4 HOCH



		SHARP CORNER TOLERANCE				
Ø	DIM TO CHECK PROEFMASSE	DIMENSIONAL RANGE (MM)		CHART C		
		FROM	> 0	> 25	> 60	> 80
(1)	DIM FOR HELP HILFMASSE	TO	25	60	80	
		TOLERANCE UNLESS OTHERWISE SPECIFIED				
(2)	THEORETIC DIM THEOR. MASSE		± 0.3	± 0.5	± 0.6	± 0.75
		WORLD TO CHART C				

DWG STATUS

DATE	STG	REV	N/P	CHG	ZONE
10OCT08	R	01			
15OCT08	R	02	--	A4	
03JUN14	R	03		C7	
01JUL14	R		AA	AB	
05MAY18	R	03	AB	A6	

REVISION HISTORY

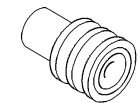
INITIAL RELEASE / FREIABGE						FRIMM	R.GUT	M.SKR
P-NO.: 13735534, 13735531, 13735532 ADDED P-NR.: 13735534, 13735531, 13735532 HINZU						W.SZO	FRIMM	M.SKR
P-NO.: 33120597 ADDED P-NR. 33120597 HINZU						A.KHG	A.URB	SYS
P-NO. CORRECTED / PARTNAMMER KORRIGIERT						A.KHG	A.URB	SYS
DIAMETER REMOVED AT TYPE2 PLUG / DURCHMESSER AUS DER TABELLE ENTFERT BEI DEN BLINDSTOPFEN						A.KHG	V.KAS	SYS

SCALE / MASSSTAB:

1:1

SCALE / MASSSTAB:

5:1



DELPHI

DELPHI DEUTSCHLAND GMBH
D-42119 WUPPERTAL
COPYRIGHT 2008 DELPHI CORPORATION AND/OR ITS AFFILIATES.
ALL RIGHTS RESERVED.
REVISED: 2014
THIS DRAWING IS THE PROPERTY OF DELPHI CORPORATION
AND CONTAINS DELPHI CONFIDENTIAL INFORMATION.
THE REPRODUCTION, DISTRIBUTION AND UTILIZATION
OF THIS DOCUMENT OR ITS RELATED CAD DATA
AS WELL AS COMMUNICATION OF ANY CONTENT TO OTHERS,
WITHOUT EXPRESS AUTHORIZATION, IS PROHIBITED.
DIESE ZEICHNUNG IST EIGENTUM VON DELPHI CORPORATION
ES IST NICHT GESTÄTTET, DIESE ZEICHNUNG FÜR ANDERE
ZWECKE ALS FÜR DIE BEREITSTELLUNG VON DIENSTLEISTUNGEN UND WAREN
AN DELPHI CORPORATION ZU NUTZEN

DR	DATE
G.FRIMMERSDORF	06OCT08
APVD1	APVD2
R.GUTENSWAGNER	10OCT08
M.SIKORA	14OCT08
APVD3	APVD4
APVD5	

SUBSTANCES OF CONCERN AND RECYCLED CONTENT PER DELPHI 10949001
POTENTIELL BEFÄHRLICHE STOFFE UND REZUKULANTANTEIL
GEMÄSS DELPHI 10949001

WATERIAL

SEE CHART / SIEHE TABELLE

DRAWING NAME

CABLE SEAL -
CAVITY PLUG

EINZELDRAHTDICHTUNG -
BLINDSTOPFEN

DRAWING NUMBER

13650896

SIZE	SCALE	FRAME NO	SHEET NO	STG	REV	N/P
A2	10:1	1 OF 1	1 OF 1	R	03	AB

CONTROLLED DOCUMENTS ARE ONLY AVAILABLE ON THE SERVER

Page: 13650896-0303-1-001 Date: 06-Mar-18 Time: 07:51

X-ON Electronics

Largest Supplier of Electrical and Electronic Components

Click to view similar products for [Automotive Connectors](#) category:

Click to view products by [APTIV](#) manufacturer:

Other Similar products are found below :

[003-018-000](#) [60403001](#) [60993906-B](#) [629515004020001](#) [M902-2131](#) [M902-2161](#) [72.330.1035.1](#) [73.353.4028.0](#) [F119300-B](#) [F166900](#)
[F258300-B](#) [F358300-B](#) [F407400](#) [F444110](#) [F487000](#) [F509500B-B](#) [827153-1](#) [8N1515-32-24P](#) [9-1326729-8](#) [925474-1](#) [928905-1](#) [964562-4](#)
[968782-1](#) [GT17SA-8DS-HU](#) [98891-1012](#) [98947-1016](#) [12004475-L](#) [12010290](#) [12010309-B](#) [12015454](#) [12020219-B](#) [12020308](#) [12041318-B](#)
[12052225-L](#) [12052466](#) [12059125](#) [12064869](#) [12004327-B](#) [12010503-B](#) [12015308](#) [12015384](#) [12015909](#) [1-21030-1](#) [12041254](#) [12041318](#)
[12047946-B](#) [12047957](#) [12047957-L](#) [12059473](#) [12066261](#)