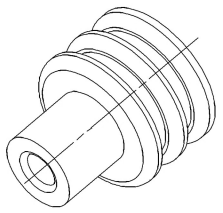
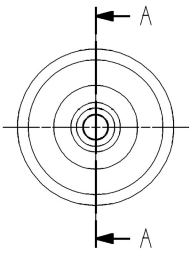
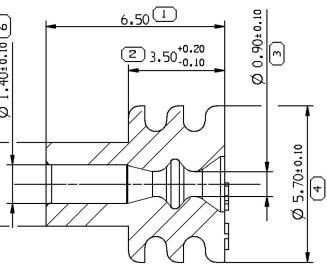


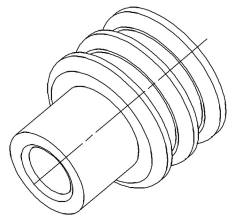
211 M 0009



SECTION A-A

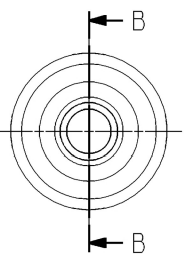
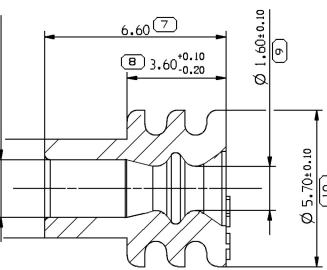


211 M 0010

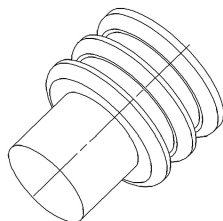


AUTRES COTES IDEM 211 M 0009  
OTHER DIMENSIONS AS 211 M 0009

SECTION B-B

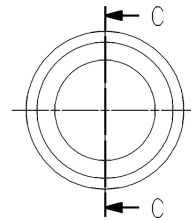
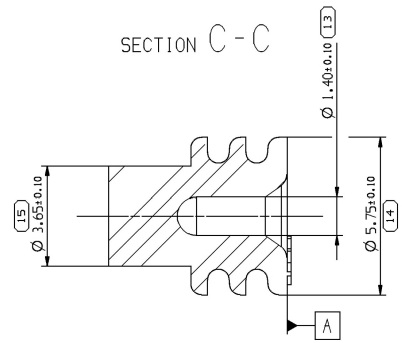


211 M 0013



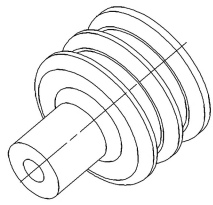
211 M 0013

SECTION C-C

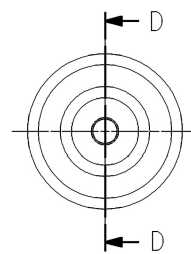
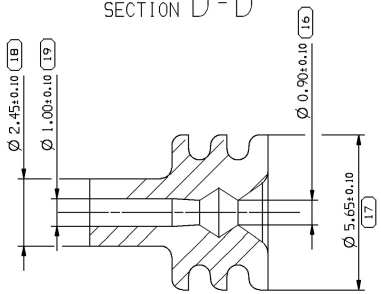


AUTRES COTES IDEM 211 M 0009  
OTHER DIMENSIONS AS 211 M 0009

211 M 0057



SECTION D-D



AUTRES COTES IDEM 211 M 0009  
OTHER DIMENSIONS AS 211 M 0009

PORT D'INSERTION DES BOUCHONS PLUGS INSERTION FORCE		SANCTION REQUIREMENT
FORCE MAXIMUM DU BOUCHON 211 M 0013 A PRESSION, BOUCHON ENFOINCE A 3MM 211 M 0013 MAXIMUM PRESSURE RESISTANCE, PLUG INSERTED TO 3MM		<OU>: 15 N
PREMIER DE MISE EN OEUVRE CONNECTIQUE BOUCHON POUR ALVEOLE USER'S MANUAL CAVITIES PLUGS		>OU>: 0.30 BAR PU 106

NOTA : DIAMETRE ISOLANT POUR INFORMATION, VOIR TABLEAU Ø  
DES FILS QUALIFIES SUR LES PLANS DES CONTACTS. NOTE: WIRE  
DIAMETER FOR INFORMATION SEE TABLE ON TERMINAL DRAWINGS  
FOR VALIDATED WIRES

DELPHI				COULEUR COLOR	TAUX HUILE RATE OF OIL	MATIERE MATERIAL	DURETE SHORE A TOUGHNESS	PRESSION D'ETANCHEITE SEALING PRESSURE (BAR)	DIAMETRE ISOLANT WIRE DIAMETER (mm)		MASSE WEIGHT (g)
INDICE REVISION	REF. PIECE PART NUM.	INDICE REVISION	MIN						MAX		
E	33514700	01	NOIR BLACK	2% ±0.10 %	LSR	54±4	0.3	(1.10)	(1.40)	0.085	
E	15327786	01	ROUGE RED	2% ±0.10 %	LSR	54±4	0.3	(1.25)	(1.90)	0.088	
E	10757056	01	BLEU BLUE	2% ±0.10 %	LSR	54±4	0.3	(1.75)	(3.00)	0.087	
F	15340284	01	BLANC WHITE	2 % ±0.10 %	LSR	51±4	0.3	BOUCHON PLUG		0.105	

DWG STATUS					ZONE		REVISION HISTORY		AUTH	DR	DATE
DATE	STAT	REV	PI	CHG							
01AUI14	R	01	-	-	-	-	FILE TRANSLATED FROM WVL SYSTEM			DGL	
02JAI16	R	01	AM	-	G11	-	DIMENSION Ø 0.90 ±0.10 WAS ADDED			J.MUG	
19AUI16	R	01	AB	-	-	-	DIMENSION NUMBERING ADDED			V.RAN	

DWG TIP  
PART DRAWING

WEIGHT (GR) \_\_\_\_\_

VOLUME (CM<sup>3</sup>) \_\_\_\_\_

ROUTING \_\_\_\_\_

UNLESS OTHERWISE SPECIFIED

GENERAL TOLERANCES  
ACCORDING TO:  
±0.2  
±0.1

GO&T  
ACCORDING TO:

CONTACT DELPHI SALES TO ASSURE  
AVAILABILITY OF PARTS.

LA LIGNE TRACÉE SUR LA RÉFÉRENCE  
PRÉCISE INDIQUE QUE LA PIÈCE N'EST PAS  
DISPONIBLE À LA COMMANDE.

LES RÉFÉRENCES PIÈCES QUI NE SONT PAS BARREES  
INDIQUENT QUE CELLES-CI SONT DISPONIBLES  
PROCHAINEMENT POUR ÊTRE COMMANDEES.

CONTACTER LE SERVICE COMMERCIAL DE DELPHI  
POUR S'ASSURER DE LA DISPONIBILITÉ DES PIÈCES

REFERENCE  
211P0051

FIRST ANGLE PROJECTION

DO NOT SCALE

USE MATH DATA

SHARP CORNER TOLERANCE

DO NOT CHECK  
COTES A VERIFIER  
COTES POUR INFO  
THEORETIC DIM  
COTES THEORIQUES

**DELPHI**  
DELPHI PACKARD ELECTRICAL/ELECTRONIC ARCHITECTURE  
WARREN, OH

© COPYRIGHT 2013 DELPHI CORPORATION AND/OR ITS AFFILIATED COMPANIES.  
ALL RIGHTS RESERVED.  
THIS DRAWING IS THE PROPERTY OF DELPHI CORPORATION AND CONTAINS DELPHI CONFIDENTIAL INFORMATION. THE REPRODUCTION, DISTRIBUTION AND UTILIZATION OF THIS DOCUMENT OR ITS RELATED CAD DATA, AS WELL AS COMMUNICATION OF ANY CONTENT TO OTHERS WITHOUT EXPRESS AUTHORIZATION, IS PROHIBITED.

CE PLAN EST LE PROPRIETE DE DELPHI CORPORATION ET CONTIEN DES INFORMATIONS DELPHI CONFIDENTIELLES. LA REPRODUCTION, LA DISTRIBUTION, LA REPRODUCTION, LA REPRODUCTION, LA REPRODUCTION ET L'UTILISATION DE CE DOCUMENT OU DE SES DONNEES ASSOCIEES SANS LA COMMUNICATION DE TOUT CONTENU A AUTRUI SANS L'EXPRESSION EST INTERDITE.

DR	BLANC	30
APV01	F FAURIE	05
APV02	S LACOTE	14
APV03	PASCAL MENARD	14
APV04		
APV05		

SUBSTANCES OF CONCERN AND RECYCLED CONTENT PER DELPHI MATERIALS PROSPECTUS ET CONTENU RECYCLABLE SEULEMENT DELPHI 10949001.

MATERIAL SPEC CHART

DRAWING NAME  
TERMINALS SICMA 2,8 RANGE 1 SINGLE WIRE SEAL & PLUG

DRAWING NUMBER  
**33514700**

SIZE AI SCALE 10:1 FRAME NO 1 OF 1 SHEET NO 1 OF 1

## X-ON Electronics

Largest Supplier of Electrical and Electronic Components

*Click to view similar products for [Automotive Connectors](#) category:*

*Click to view products by [APTIV](#) manufacturer:*

Other Similar products are found below :

[003-018-000](#) [60403001](#) [60993906-B](#) [629515004020001](#) [M902-2131](#) [M902-2161](#) [72.330.1035.1](#) [73.353.4028.0](#) [F119300-B](#) [F166900](#)  
[F258300-B](#) [F358300-B](#) [F407400](#) [F444110](#) [F487000](#) [F509500B-B](#) [827153-1](#) [8N1515-32-24P](#) [9-1326729-8](#) [925474-1](#) [928905-1](#) [964562-4](#)  
[968782-1](#) [GT17SA-8DS-HU](#) [98891-1012](#) [98947-1016](#) [12004475-L](#) [12010290](#) [12010309-B](#) [12015454](#) [12020219-B](#) [12020308](#) [12041318-B](#)  
[12052225-L](#) [12052466](#) [12059125](#) [12064869](#) [12004327-B](#) [12010503-B](#) [12015308](#) [12015384](#) [12015909](#) [1-21030-1](#) [12041254](#) [12041318](#)  
[12047946-B](#) [12047957](#) [12047957-L](#) [12059473](#) [12066261](#)