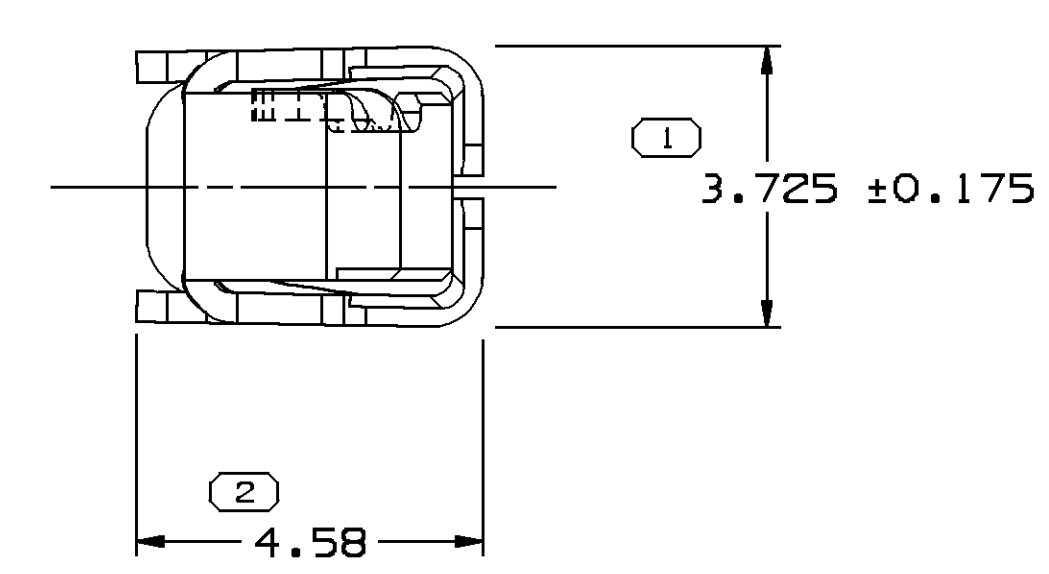
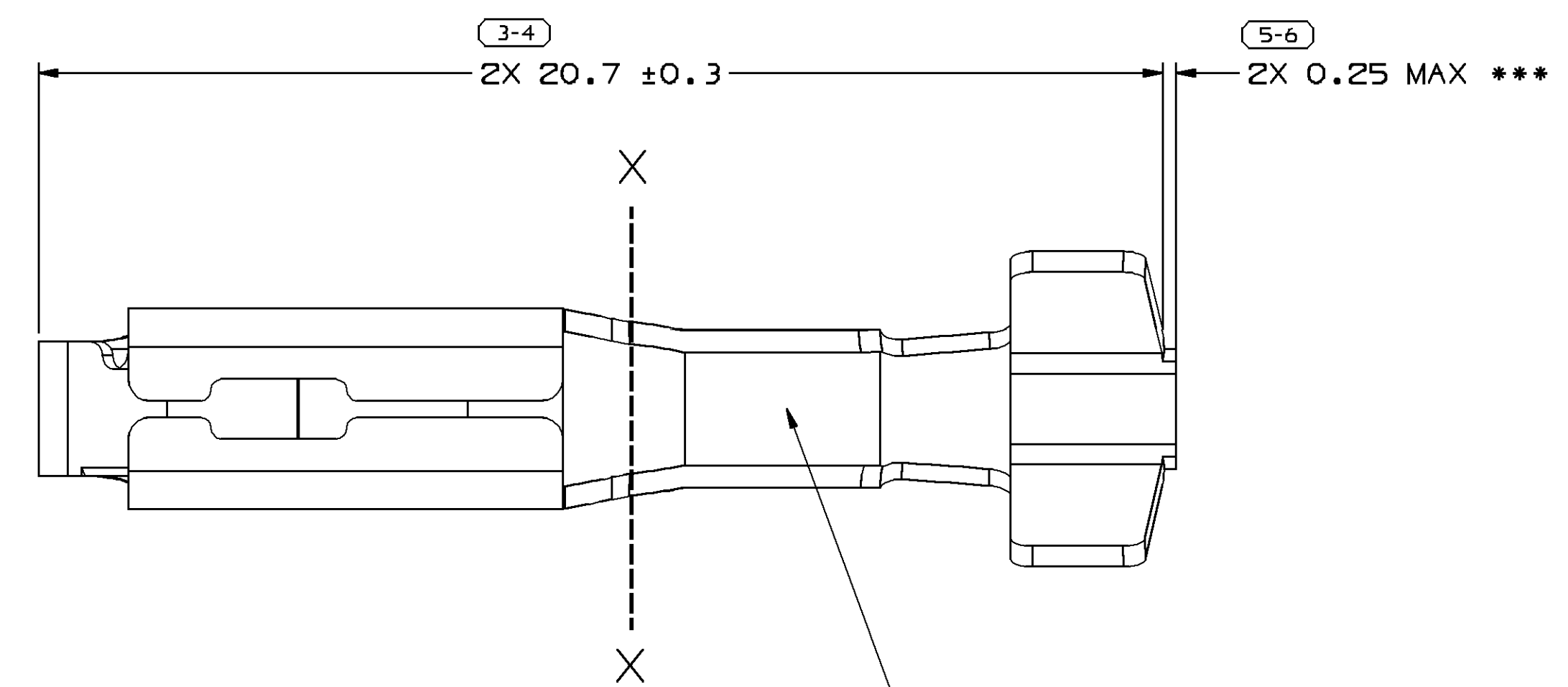


SYMBOL DEFINITION		MISSING NUMBERS		DATE		REV		ZONE		REVISION HISTORY		AUTH		DR		AP/VD	
A DIMENSION WITHOUT AN INSPECTION REPORT SYMBOL $\square$ DOES NOT REQUIRE INSPECTION. IT MAY BE CONTROLLED ON AN INDIVIDUAL COMPONENT DRAWING	TOTAL NO. OF SYMBOLS ON DRAWING	6		02MR99	R	01	-	-	15366698	-	RELEASED	990005	LMM	RMM	BSB		
	LAST NO. USED	8		07DE99	R	02	-	-	15366698	-	REVISED GRAPHICS	198031	TLP	TLP	BSB		
				19SE01	R	03	-	-	15366698	-	REVISED GRAPHICS	213899	JAA	JAA	BSB		
				19OC04	R	04	-	-	15366698	-	ADDED TERMINAL ID NOTE	260108	SPS	JAA	MKW		
				08SE06	R	05	-	-	15366698	-	ADDED PROBE NOTE	284253	MDH	FRG	WTM		

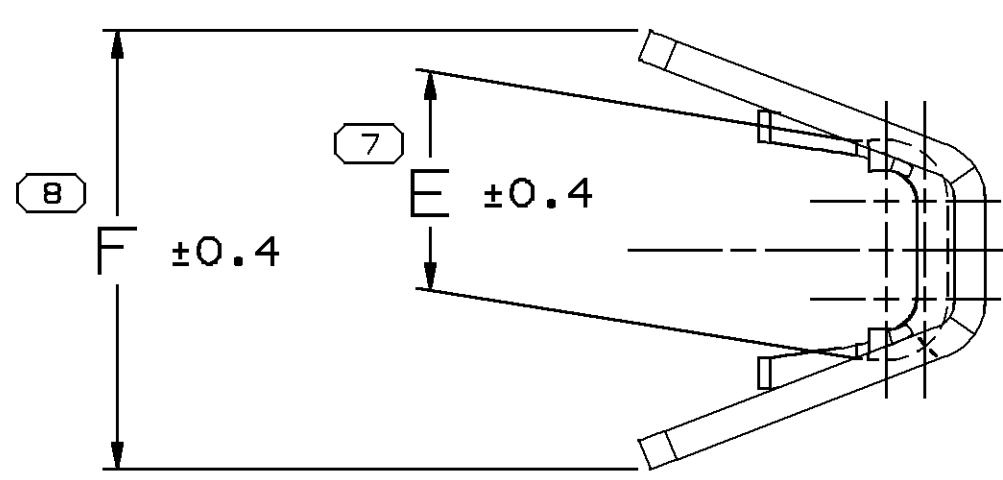


VIEW TO X-X

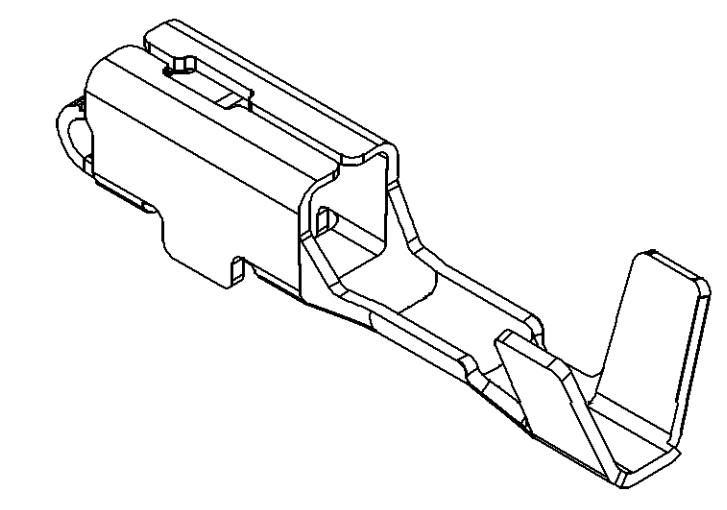
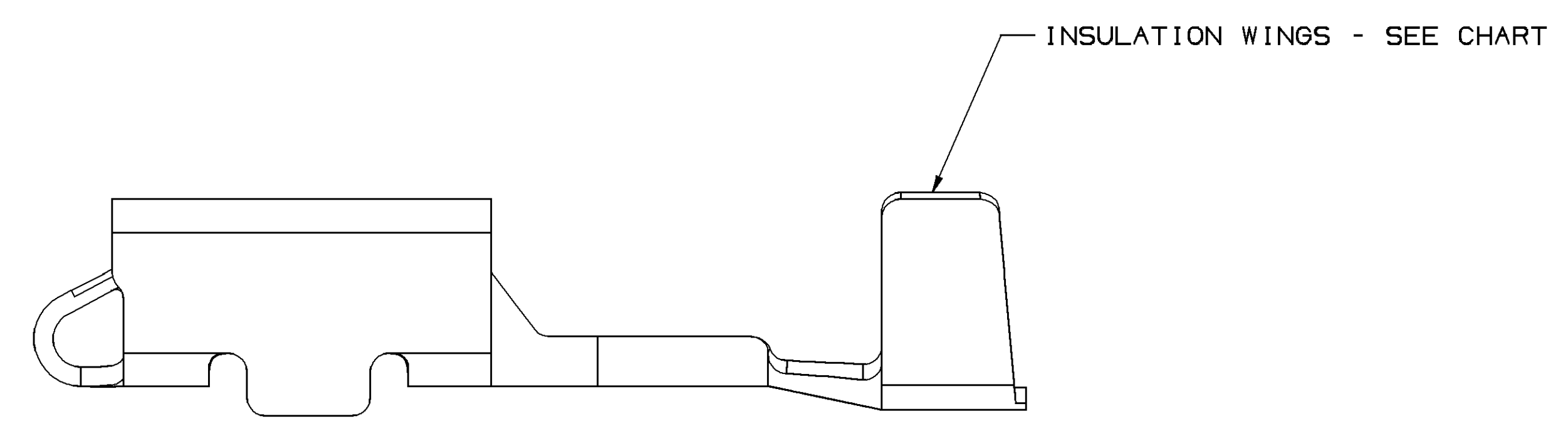


TYPE 201

STAMP DIE ID "PXX" IN THIS AREA (0.6) HIGH CHARACTERS XX DESIGNATES DIE NUMBER LOCATION IS APPROXIMATE



VIEW TO X-X



VIEW SCALE DOES NOT REFLECT ACTUAL PART SIZE

- NOTES
- UNLESS OTHERWISE SPECIFIED AND/OR INDICATED:  
DIMENSIONS ARE TO FACE OF VIEW SHOWN AND AUTOMATICALLY ROUNDED BY COMPUTER FOR INSPECTION. (SEE MATH MODEL FOR PRECISE DIMENSIONS.) FOR ALL OTHER DIMENSIONS NOT SHOWN BUT REQUIRED FOR TOOL BUILD, SEE MATH MODEL FOR PRECISE TOOL PATH DATA.
  - RECOMMENDED MATING BLADE WIDTH 2.8 ± 0.08 THICKNESS 0.825 ± 0.035
  - "\*\*\*" DENOTES DIMENSION IS MADE AT CUT OFF AND CRIMP DIE
  - VISIBLE CRACKS ARE NOT PERMISSIBLE
  - DO NOT PROBE, TEST OR OTHERWISE CONTACT THE INTERIOR REGION (THE SPRING OR ANY MOVING PART) OF THIS TERMINAL. SEVERE DAMAGE CAN OCCUR, COMPROMISING THE PERFORMANCE OF THE ELECTRICAL INTERFACE.

PART NO	REV	N/P	STATUS	MAT'L SIZE	MAT'L SPEC	PART NO	REV	N/P	STATUS	M1574CN9 C42500 EX HD	2 - 3	13	201	2,9	5,8
			UNPLATED	0.406 X 32.54		15366698	03		AB					E	F
									N/P						

PART DRAWING	
STYLE	D
VOLUME 10/P1	DISTR CODE
UNLESS OTHERWISE SPECIFIED	
THIS DOCUMENT IS IN ACCORDANCE WITH ASME Y14.5M-1994	
AS MODIFIED BY THE IN-SPEC DIMENSIONING AND TOLERANCING ADDENDUM-2001. SEPARATE NOTATIONS OF FEATURES MAY BE BASED SEPARATELY PER RELEASE OF DATUM REFERENCES.	
ALL DIMENSIONS ARE IN MILLIMETERS	
REFERENCE	
DIMENSIONAL RANGE: DIM	CHART D
FROM 0 TO 12	> 12
TOLERANCE UNLESS OTHERWISE SPECIFIED	
+0.1	+0.2
ANGULAR TOLERANCE 2°	
THIRD ANGLE PROJECTION	DO NOT SCALE
USE MATH DATA	UNIMAPHS

**DELPHI**  
DELPHI PACKARD ELECTRIC SYSTEMS  
WREN, OH

DR	DATE
APV01 L. MACIAS	02MR99
APV02 R. MOYSEN	02MR99
APV03 B. GUMP	16AP99
APV04	
APV05	

SUBSTANCES OF CONCERN AND RECYCLED CONTENT PER DELPHI 10949001

DRAWING NAME: TAXI TERM F M/P 280

DRAWING NUMBER: 12129412

SIZE: A0 SCALE: 10:1 FRAME NO: 1 OF 1 SHEET NO: 2 OF 2 REV: R 05

Date: 09-24-08 Time: 10:58

## X-ON Electronics

Largest Supplier of Electrical and Electronic Components

*Click to view similar products for [Automotive Connectors](#) category:*

*Click to view products by [APTIV](#) manufacturer:*

Other Similar products are found below :

[003-018-000](#) [60403001](#) [60993906-B](#) [629515004020001](#) [M902-2131](#) [M902-2161](#) [72.330.1035.1](#) [73.353.4028.0](#) [F119300-B](#) [F166900](#)  
[F258300-B](#) [F358300-B](#) [F407400](#) [F444110](#) [F487000](#) [F509500B-B](#) [827153-1](#) [8N1515-32-24P](#) [9-1326729-8](#) [925474-1](#) [928905-1](#) [964562-4](#)  
[968782-1](#) [GT17SA-8DS-HU](#) [98891-1012](#) [98947-1016](#) [12004475-L](#) [12010290](#) [12010309-B](#) [12015454](#) [12020219-B](#) [12020308](#) [12041318-B](#)  
[12052225-L](#) [12052466](#) [12059125](#) [12064869](#) [12004327-B](#) [12010503-B](#) [12015308](#) [12015384](#) [12015909](#) [1-21030-1](#) [12041254](#) [12041318](#)  
[12047946-B](#) [12047957](#) [12047957-L](#) [12059473](#) [12066261](#)