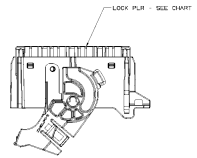
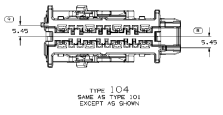
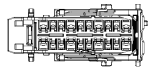
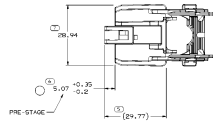
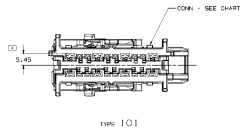
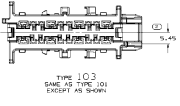
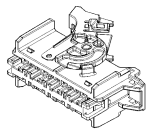
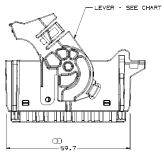
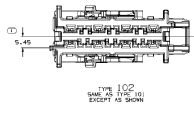


SYMBOL DEFINITION		TOTAL NO. OF INSPECTIONS REQUIRED		NO. MISSING SYMBOLS	
A	SYMBOLS WHICH ARE INSPECTION REPORT SYMBOLS. THESE DO NOT REQUIRE INSPECTION. (1 MAY BE CONTROLLED ON THE INDIVIDUAL COMPONENT DRAWING.)	19	0	0	0
B	SYMBOLS WHICH REQUIRE INSPECTION. (1 MAY BE CONTROLLED ON THE INDIVIDUAL COMPONENT DRAWING.)	0	0	0	0

REVISIONS		DATE		BY		REASON	
1	15547109	01/11/78	1	...	...	...	...
2	15547109	01/11/78	2	...	...	...	...



- NOTES
- UNLESS OTHERWISE SPECIFIED AND/OR INDICATED: DIMENSIONS ARE TO FACE OF VIEW UNLESS OTHERWISE INDICATED. DIMENSIONS FOR INSPECTION ARE INDICATED BY DIMENSION LINES. DIMENSIONS NOT SHOWN BUT REQUIRED FOR TOOLING, SEE DRAWING FOR PRECISION DIMENSIONS. FOR ALL DIMENSIONS, DATE LETTERS, AND SOFT FLIPS, THAT DO NOT AFFECT THE FIT, FORM, OR FUNCTION OF THE PART, THE DIMENSIONS FOR DIM-C, CS-D, AND CS-E, SHALL BE AS SHOWN.
  - THIS PRODUCT IS NOT CATEGORIZED AS AN APPEARANCE ITEM. MINOR IMPERFECTIONS INCLUDING, BUT NOT LIMITED TO, PUR APPEAR, GRAIN, SURFACE, DATE LETTERS, AND SOFT FLIPS, THAT DO NOT AFFECT THE FIT, FORM, OR FUNCTION OF THE PART ARE PERMISSIBLE FOR DIM-C, CS-D, AND CS-E.
  - FOR APPLICATION DATA SEE THE INDIVIDUAL APPLICATION DRAWINGS.
  - ASSEMBLY MANUAL FOR PRE-ASSEMBLY, HARNESS ASSEMBLY AND CAR ASSEMBLY SEE PART 1000000.

DELPHI	
DATE	15547109
REV	1
BY	...
CHECKED	...
APPROVED	...

REV	DATE	BY	CHKD	APP'D	REASON
1	01/11/78	...	...	...	...
2	01/11/78	...	...	...	...

## X-ON Electronics

Largest Supplier of Electrical and Electronic Components

*Click to view similar products for [Automotive Connectors](#) category:*

*Click to view products by [APTIV](#) manufacturer:*

Other Similar products are found below :

[003-018-000](#) [60403001](#) [60993906-B](#) [629515004020001](#) [M902-2131](#) [M902-2161](#) [72.330.1035.1](#) [73.353.4028.0](#) [F119300-B](#) [F166900](#)  
[F258300-B](#) [F358300-B](#) [F407400](#) [F444110](#) [F487000](#) [F509500B-B](#) [827153-1](#) [8N1515-32-24P](#) [9-1326729-8](#) [925474-1](#) [928905-1](#) [964562-4](#)  
[968782-1](#) [GT17SA-8DS-HU](#) [98891-1012](#) [98947-1016](#) [12004475-L](#) [12010290](#) [12010309-B](#) [12015454](#) [12020219-B](#) [12020308](#) [12041318-B](#)  
[12052225-L](#) [12052466](#) [12059125](#) [12064869](#) [12004327-B](#) [12010503-B](#) [12015308](#) [12015384](#) [12015909](#) [1-21030-1](#) [12041254](#) [12041318](#)  
[12047946-B](#) [12047957](#) [12047957-L](#) [12059473](#) [12066261](#)