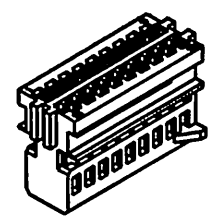
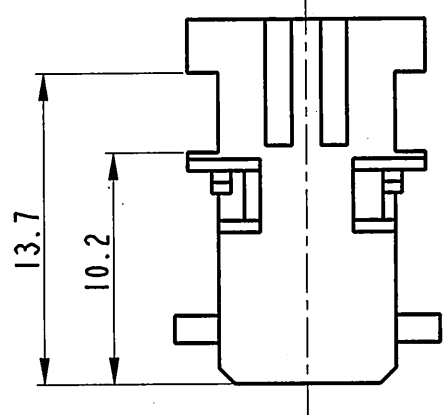
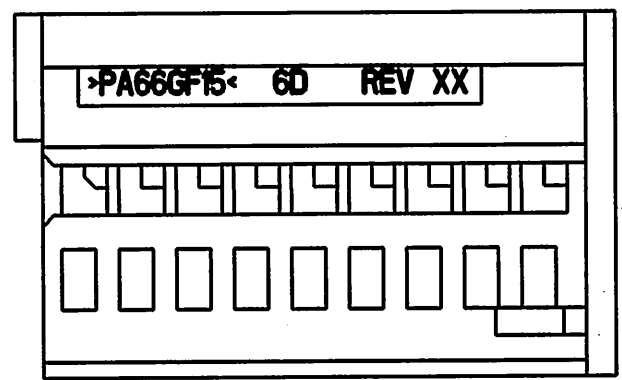


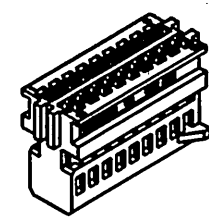
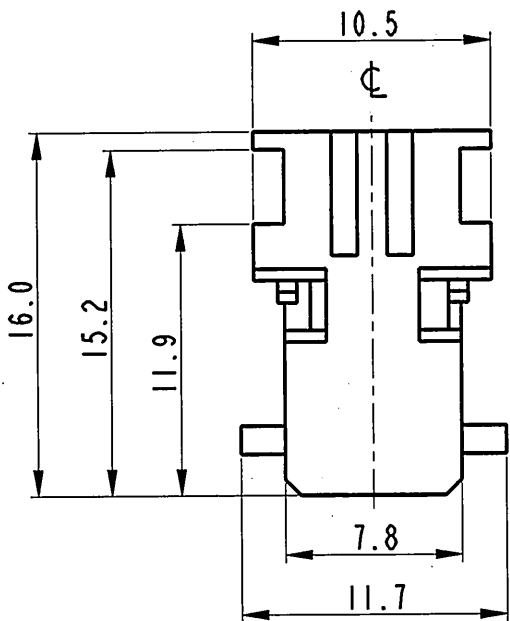
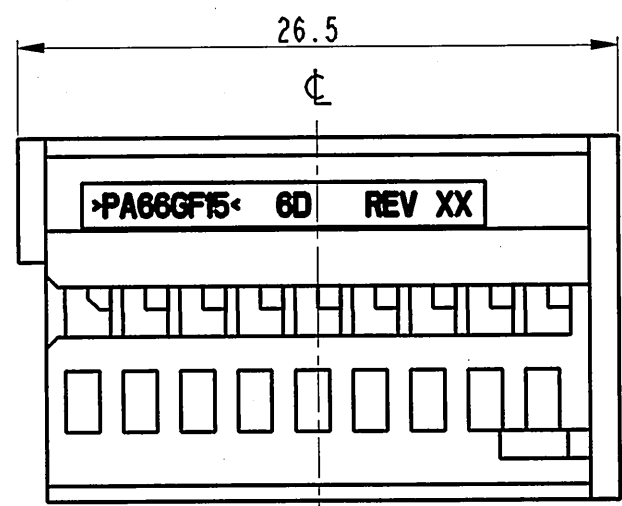
**STRICTLY
CONFIDENTIAL**



SCALE 1:1

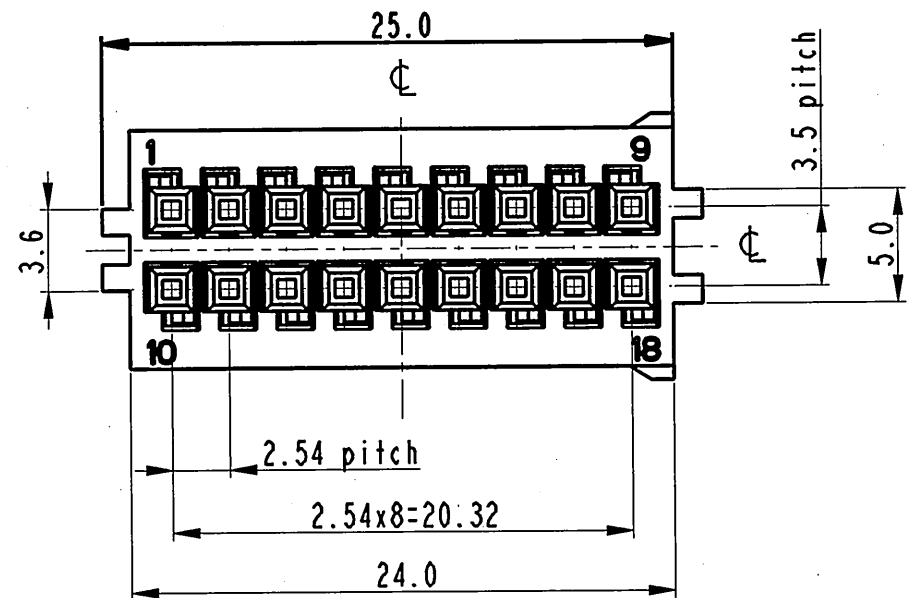
P/N 17281880	
MATERIAL	PA66-GF15
COLOUR	GREY

ⓘ CAVITIES SUITABLE FOR 0.64 DUO TWIN FEMALE CONTACTS: P/N 60080131-60080011
(Cavità per contatti femmina 0.64 Duo Twin P/N 60080131-60080011)



SCALE 1:1

P/N 17281800A	
MATERIAL	PA66-GF15
COLOUR	BLACK



37-08				02/10/2008		00-R		RELEASED FOR PRODUCTION Mould revision not necessary					
ECN-NO. NUMERO -ECN	DATE DATA	DD / MM / YY	REVISION REVISIONE	POSITION POSIZIONE	CHANGE DESCRIPTION DESCRIZIONE MODIFICA			DRAWN BY DISEGNATORE	CHK. BY CONTROLLATO	APPR. BY APPROVATO			
PRODUCT SPEC. SPEC. DI PRODOTTO	PACKAGING SPEC. SPEC. DI IMBALLAGGIO	APPLICATION SPEC. SPEC. DI APPLICAZIONE		THIS DRAWING AND ALL OTHER INFORMATION CONTAINED THEREIN IS PROPRIETARY AND THE PROPERTY OF FCI. This drawing may not be copied, reproduced or disclosed to any third party without the expressed written permission of FCI. © FCI April 1999			QUESTO DISEGNO ED OGNI ALTRA INFORMAZIONE IN ESSO CONTENUTA SONO ESCLUSIVI E DI PROPRIETA' DELLA FCI. Questo disegno non puo' essere copiato, riprodotto o divulgato a terzi senza l'espresso consenso scritto della FCI. © FCI April 1999						
TOLERANCES TOLLERANZE		±0.3mm / ±1°		MATERIAL : MATERIALE :		NYLON		SURFACE FINISH FINITURA SUPERFICIALE		-		CAD SYSTEM pro / eng.	
COUNTERPART Nr. CONTROPARTE Nr.		-		COLOUR : COLORE :		SEE TABLE		FCI		ISO PROJECTION PROIEZIONE ISO		DIMENSION IN MILLIMETERS DIMENSIONI IN MILLIMETRI	
DO NOT SCALE DRAWING DISEGNO FUORI SCALA				TOOL NO.		-		LOC. CODE NAZIONALITA'		IT		DRAWING NUMBER NUMERO DISEGNO	
DRAWN BY DISEGNATORE	DATE DATA	NAME NOME	TITLE DESCRIZIONE			DRAWING NUMBER NUMERO DISEGNO		SCALE		SHEET FOGLIO		of / di	
CHECKED BY CONTROLLATO	03/04/06	FP	HOUSING 18W 2.54x3.5 (Mono modulo 18vie 2.54x3.5)			FSC 309946		3:1		1		1 di	
APPROVED BY APPROVATO	03/04/06	MC	ESR NO. NUMERO ESR	EU 060094	CAT. NO. NUMERO CAT.	SEE TABLE	FILE NAME NOME FILE	fsc309946	SCALE SCALA		3:1		

X-ON Electronics

Largest Supplier of Electrical and Electronic Components

Click to view similar products for [Automotive Connectors](#) category:

Click to view products by [APTIV](#) manufacturer:

Other Similar products are found below :

[003-018-000](#) [60403001](#) [60993906-B](#) [629515004020001](#) [M902-2131](#) [M902-2161](#) [72.330.1035.1](#) [73.353.4028.0](#) [F119300-B](#) [F166900](#)
[F258300-B](#) [F358300-B](#) [F407400](#) [F444110](#) [F487000](#) [F509500B-B](#) [827153-1](#) [8N1515-32-24P](#) [9-1326729-8](#) [925474-1](#) [928905-1](#) [964562-4](#)
[968782-1](#) [GT17SA-8DS-HU](#) [98891-1012](#) [98947-1016](#) [12004475-L](#) [12010290](#) [12010309-B](#) [12015454](#) [12020219-B](#) [12020308](#) [12041318-B](#)
[12052225-L](#) [12052466](#) [12059125](#) [12064869](#) [12004327-B](#) [12010503-B](#) [12015308](#) [12015384](#) [12015909](#) [1-21030-1](#) [12041254](#) [12041318](#)
[12047946-B](#) [12047957](#) [12047957-L](#) [12059473](#) [12066261](#)