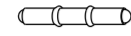
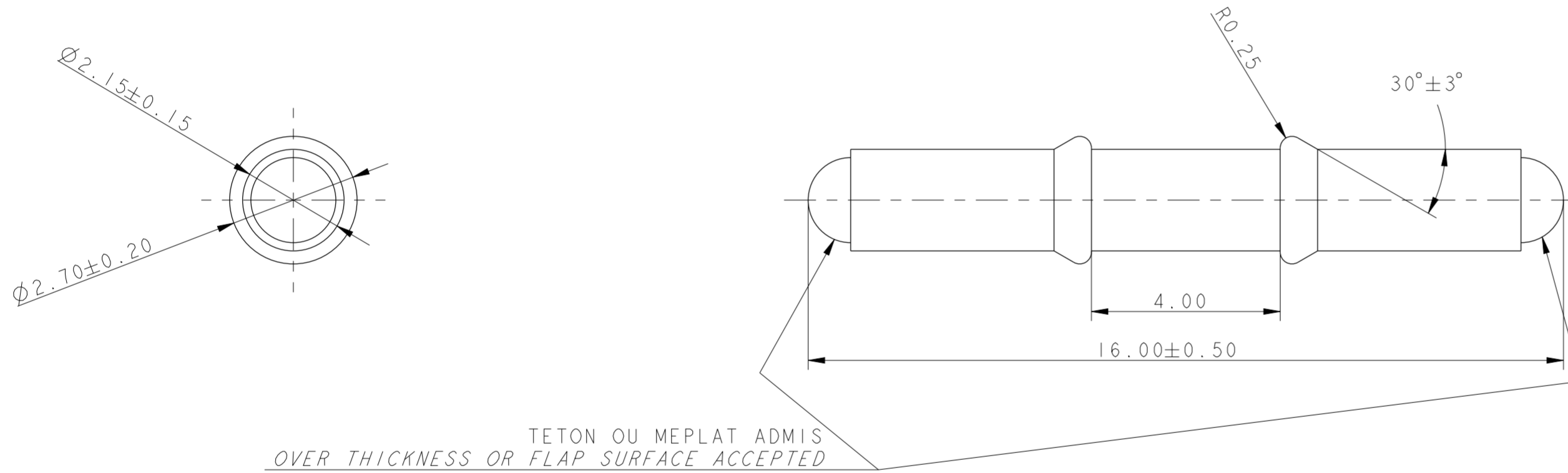


COULEUR COLOR	CONDITIONNEMENT PACKAGING	QUANTITE QUANTITY
VERT GREEN	A13	80 000



SCALE 1:1



EUR\_C04\_112\_F29\_PDS

	PART NUMBER	PART REV.
MVL REF.	210A015019	D
DELPHI REF.	15342610	-

ECN-NO. / NUMERO ECN		POSITION / POSITION		CHANGE DESCRIPTION / MODIFICATION	
PRODUCT SPEC. / SPECIF. PRODUIT		PACKAGING SPEC. / SPECIF. EMBALLAGE		APPLICATION SPEC. / SPECIF. APPLICATION	
TOLERANCES / TOLERANCES		MATERIAL / MATIERE		SURFACE FINISH / ETAT DE SURFACE	
COUNTERPART No. / CONTRE-PARTIE N°		COLOUR / COULEUR		DELPHI CORPORATION AND/OR ITS AFFILIATES. ALL RIGHTS RESERVED. REVISED	
DO NOT MEASURE DRAWING / NE PAS PRENDRE DE COTES		TOOL NO. / OUTIL N°		ECO Loc. Code / CODE B.E.	
CREATED BY / CREE PAR	DATE	NAME / NOM	TITLE / DESIGNATION	DRAWING NUMBER / REF. PLAN	REV. / IND.
MODIFIED BY / MODIF. PAR	2013/07/11	E. PHILIPPE	15 AND 28 CAVITY CAP	PCC0781042	B
CHECKED BY / VERIF. PAR	2013/07/15	S. LACOTE	STANDARD CAP ANO	SERIAL RELEASED	
APPROVED BY / APPR. PAR	2013/07/15	L. ETIPIER	STANDARD	210A015019	D
FILE NAME / NOM DE FICHIER	PCC0781042	ESR NO. / NUMERO ESR	STANDARD	DOCUMENT UNDER PDS CONTROL / DOCUMENT GERE SOUS P.D.S.	NO MODIFICATION ALLOWED OUTSIDE / PAS DE MODIFICATION EN DEHORS

**DELPHI**  
DELPHI PACKARD ELECTRICAL/ELECTRONIC ARCHITECTURE  
EPERNON, FRANCE

**C** ISO PROJECTION PROJECTION ISO

DIMENSION IN MILLIMETERS / DIMENSIONS EN MILLIMETRES

APPROVAL LEVEL / NIVEAU D'APPROBATION

SHEET / FEUILLE

of 1 sur 1

SCALE / ECH. 10:1

## X-ON Electronics

Largest Supplier of Electrical and Electronic Components

*Click to view similar products for [Automotive Connectors](#) category:*

*Click to view products by [APTIV](#) manufacturer:*

Other Similar products are found below :

[003-018-000](#) [60403001](#) [60993906-B](#) [629515004020001](#) [M902-2131](#) [M902-2161](#) [72.330.1035.1](#) [73.353.4028.0](#) [F119300-B](#) [F166900](#)  
[F258300-B](#) [F358300-B](#) [F407400](#) [F444110](#) [F487000](#) [F509500B-B](#) [827153-1](#) [8N1515-32-24P](#) [9-1326729-8](#) [925474-1](#) [928905-1](#) [964562-4](#)  
[968782-1](#) [GT17SA-8DS-HU](#) [98891-1012](#) [98947-1016](#) [12004475-L](#) [12010290](#) [12010309-B](#) [12015454](#) [12020219-B](#) [12020308](#) [12041318-B](#)  
[12052225-L](#) [12052466](#) [12059125](#) [12064869](#) [12004327-B](#) [12010503-B](#) [12015308](#) [12015384](#) [12015909](#) [1-21030-1](#) [12041254](#) [12041318](#)  
[12047946-B](#) [12047957](#) [12047957-L](#) [12059473](#) [12066261](#)