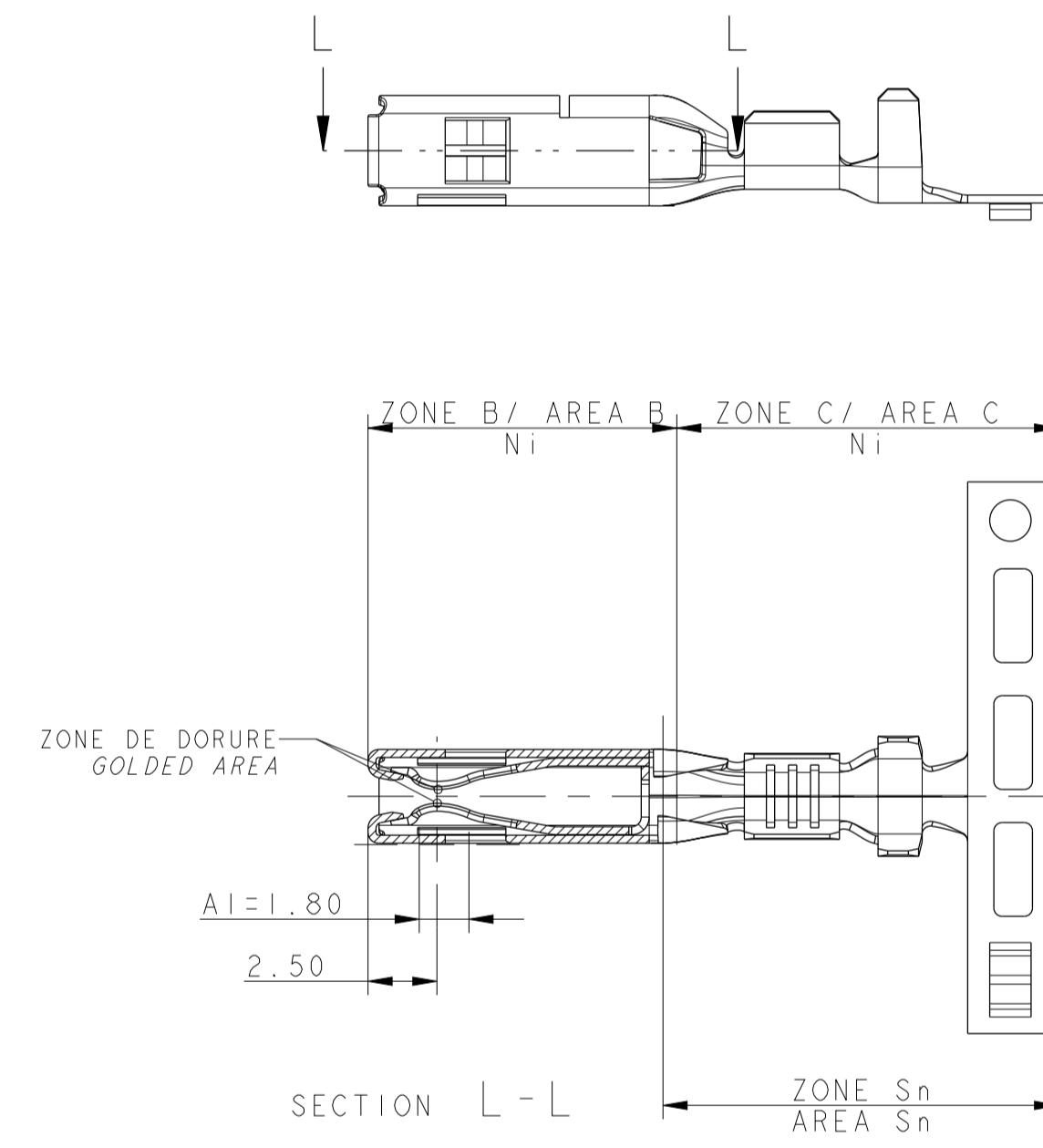
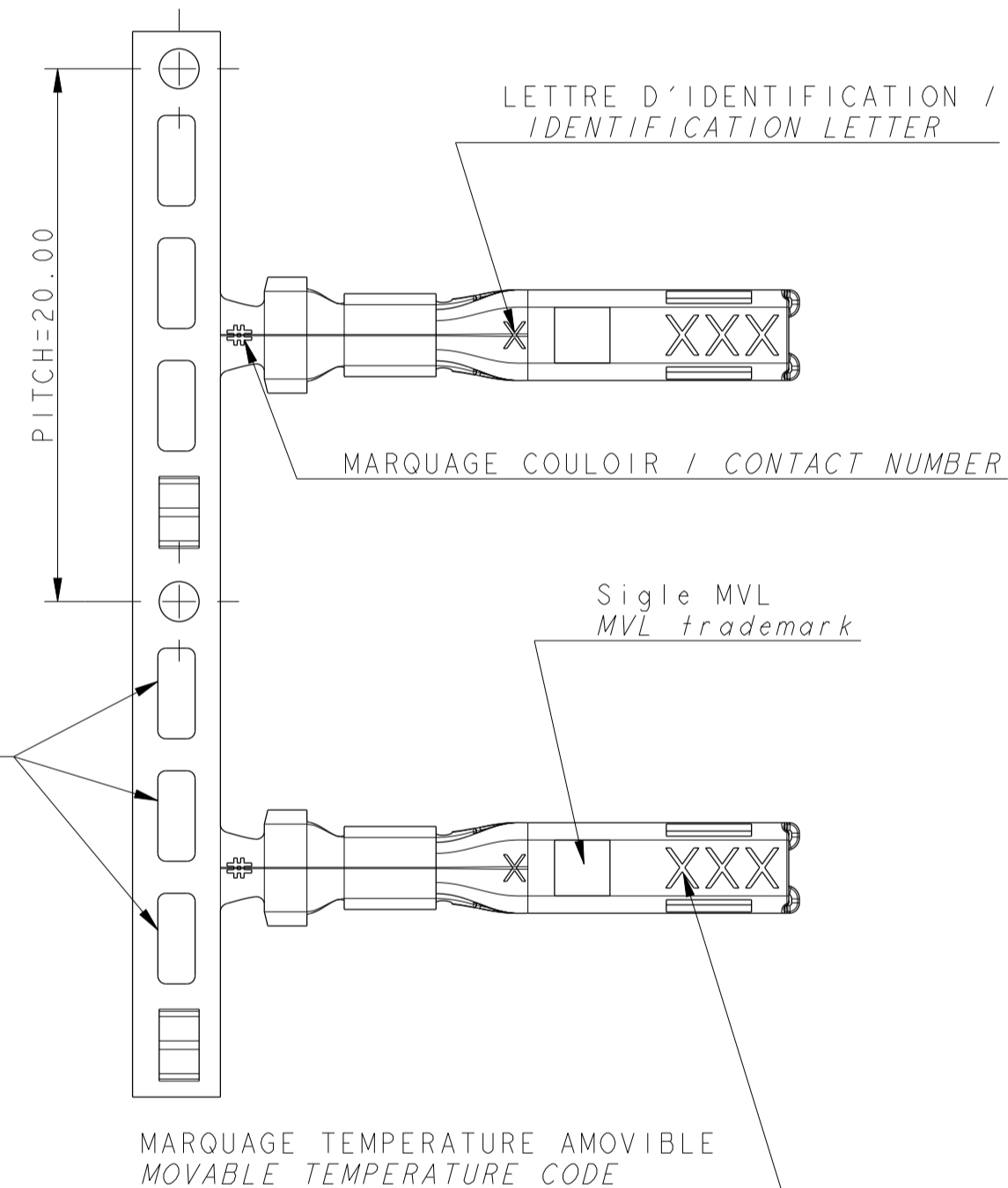
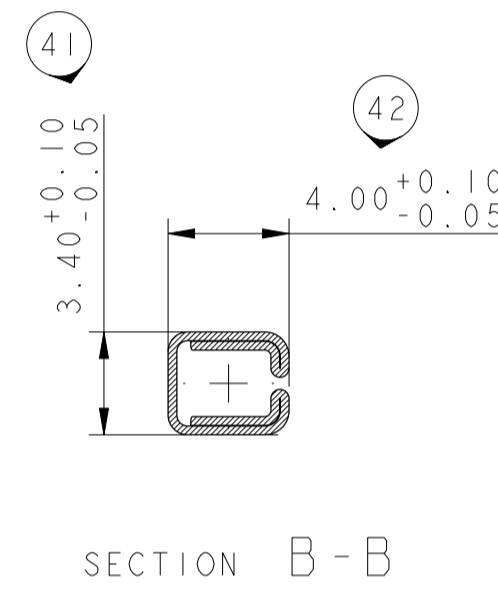
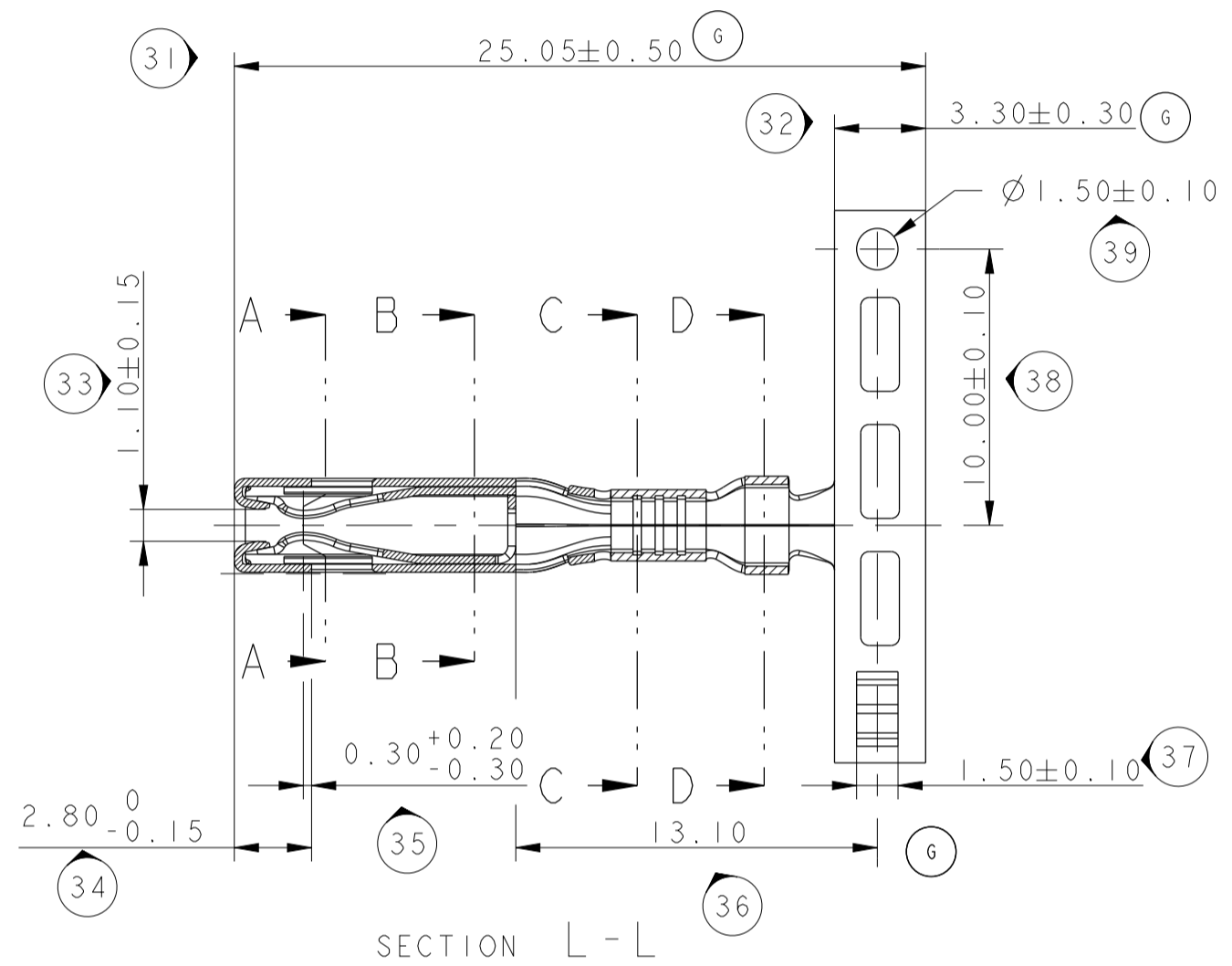
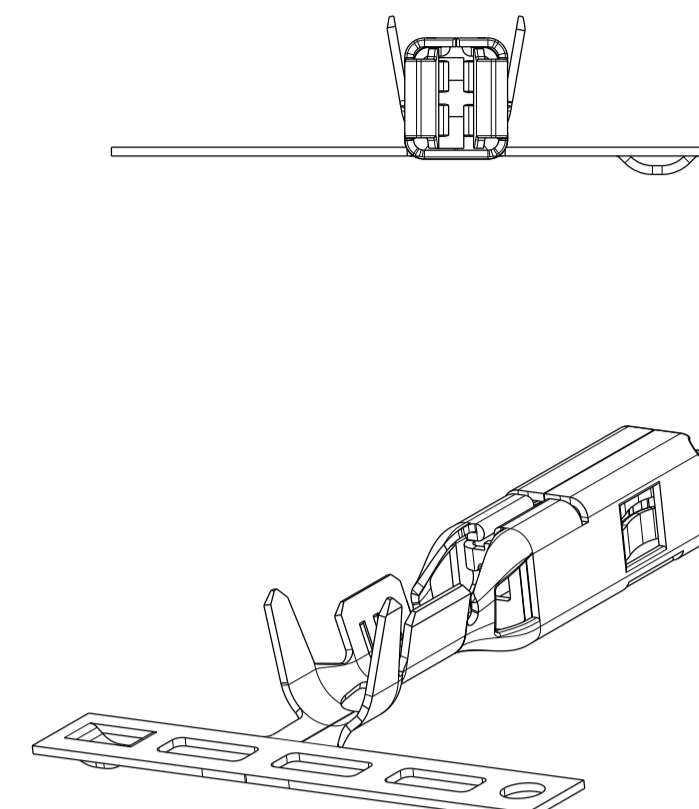
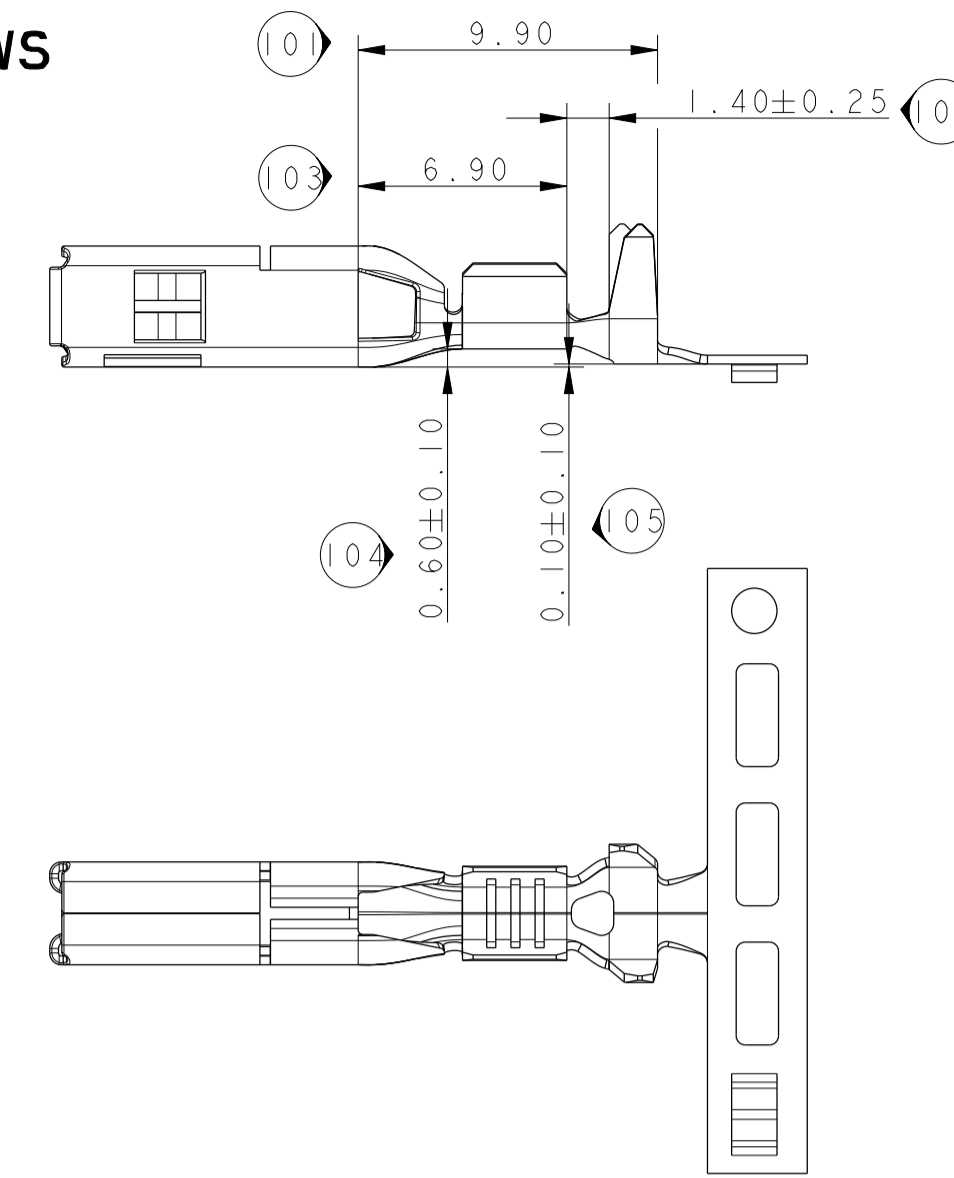
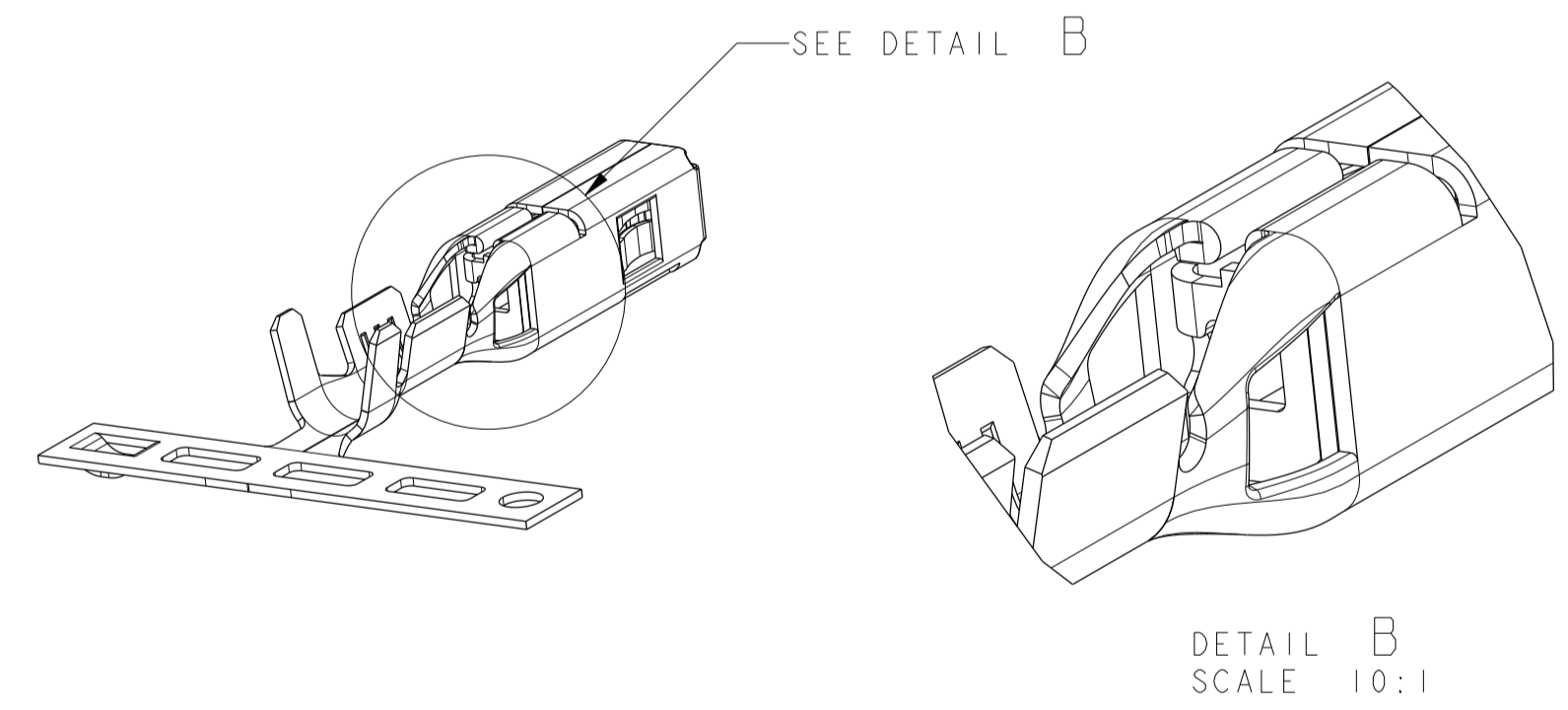


JUF /SWS



Reference	Area		Ni		Sn (µm)	Thickness Au	
	B	C	B	C		nominal	mini
211 CC 3S X 4 60	Al (INT) Contact point	1 µm MIN 2 µm MAX	1 µm MIN 0.1 µm MAX			1.52 µm	1.27 µm
	Ni				1 µm MIN 3 µm MAX		

NOMBRE DE DIMENSIONS NUMEROTEES / QUANTITY OF NUMBERING DIMENSIONS	38
Numéro non utilisé / Numbering not used	14-20; 30; 40; 43-100
Dernier numéro utilisé / last number used	105



DETAIL B
SCALE 10:1

ETAT STATE	Références																				Material	Classe								
	⑥				JUF / SWS ⑥				⑥				JUF / SWS ⑥				⑥													
	MVL	REV.	DELPHI	REV.	MVL	REV.	DELPHI	REV.	MVL	REV.	DELPHI	REV.	MVL	REV.	DELPHI	REV.	MVL	REV.	DELPHI	REV.	MVL	REV.	DELPHI	REV.						
Pré-étamé Pretinned	21ICC3S1150	D	10776116	01					21ICC3S4150	D	33510893	01					21ICC3S2150	D	10776330	01						Cu Zn 15	85°			
Pré-étamé Pre-tinned	21ICC3S1160	D	10781041	01	21ICC3S1161	D	10740375	01	21ICC3S4160	D	15522621	01	21ICC3S4161	D	13873373	01	21ICC3S2160	D	10726549	01	21ICC3S2161	D	10740376	01	F866700	D	33510896	01	Cu Fe 2P	125°
Pré-pisté Pre-tracked 1.27µ int	21ICC3S1460	D	13567906	01					21ICC3S4460	D	33510894	01					21ICC3S2460	D	33501949	01							Cu Fe 2P	125°		
Pré-étamé Pre-tinned	21ICC3S1190	D	33501947	01					21ICC3S4190	D	33501951	01					21ICC3S2190	D	33501948	01							Cu Cr Ag Fe Ti Si	150°		
Section Gauge	0.35 to 0.70				0.75 to 1.30				1.35 to 2.50				3.00 to 4.00																	
Isolant Insulation	⑥ 1.25 to 1.80				⑥ 1.60 to 2.40				2.1 to 3				3 to 4																	
A				2.9								3.1																4.65		
B				2.2								2.8																5.05		
R=C				0.9								0.9																1.3		
D ± 0.3			4				4.3				4.35																4.7		5	
E			3.3				4.1				4.15																4.9		5.3	
R=F			1.4				1.4				1.4																1.4		1.7	

14-01621

- 24.95; 12.35 BECOME 12.95; 13.10
- UPDATE INSULATION
- MODIFY CARRIER STRIP DESIGN AND FRONT SHAPE
- 0.80 BECOMES 0.60;
- DELPHI P/N ADDED; REV BECOME D

ECN-NO. / NUMBER ECN	POSITION	CHANGE DESCRIPTION / MODIFICATION

PROJECT SPEC: SPECIF. PRODUCT: APPLICATION SPEC: SPECIF. APPLICATION: COPYRIGHT DELPHI CORPORATION AND/OR ITS AFFILIATES. ALL RIGHTS RESERVED. REVISED THIS DRAWING IS THE PROPERTY OF DELPHI CORPORATION AND CONTAINS DELPHI CONFIDENTIAL INFORMATION. THE REPRODUCTION, DISTRIBUTION AND RELEASE OF THIS DOCUMENT OR ITS CONTENTS WITHOUT DELPHI'S WRITTEN PERMISSION IS PROHIBITED. CE DOCUMENT ET SES CONTENU SONT PROPRIÉTÉ DE DELPHI CORPORATION ET SONT DE NATURE CONFIDENTIELLE. LA REPRODUCTION, LA DISTRIBUTION ET LA DIVULGATION DE CE DOCUMENT SANS LAutorisation ECRITE DE DELPHI SONT PROHIBES.

TOLERANCES: ±0.2 ±0.2 MATERIAL: SEE TABLE ETAT DE SURFACE: DELPHI

CONTRACT NO. / CONTRAT: 20080711 TECHNIQUE PROJECT: 28 x 08 FEMALE TERMINAL DRAWING NUMBER: 211FT0437

DO NOT MEASURE DRAWING / NE PAS MESURER LE DRESSING: ECO: 100 PROJECTION: 1ST ANGLE CODE: A1

DATE: 20140409 NAME: P FALLAUX TITLE: DESIGNATION: 28 x 08 FEMALE TERMINAL DRAWING LEVEL: REF. PLAN

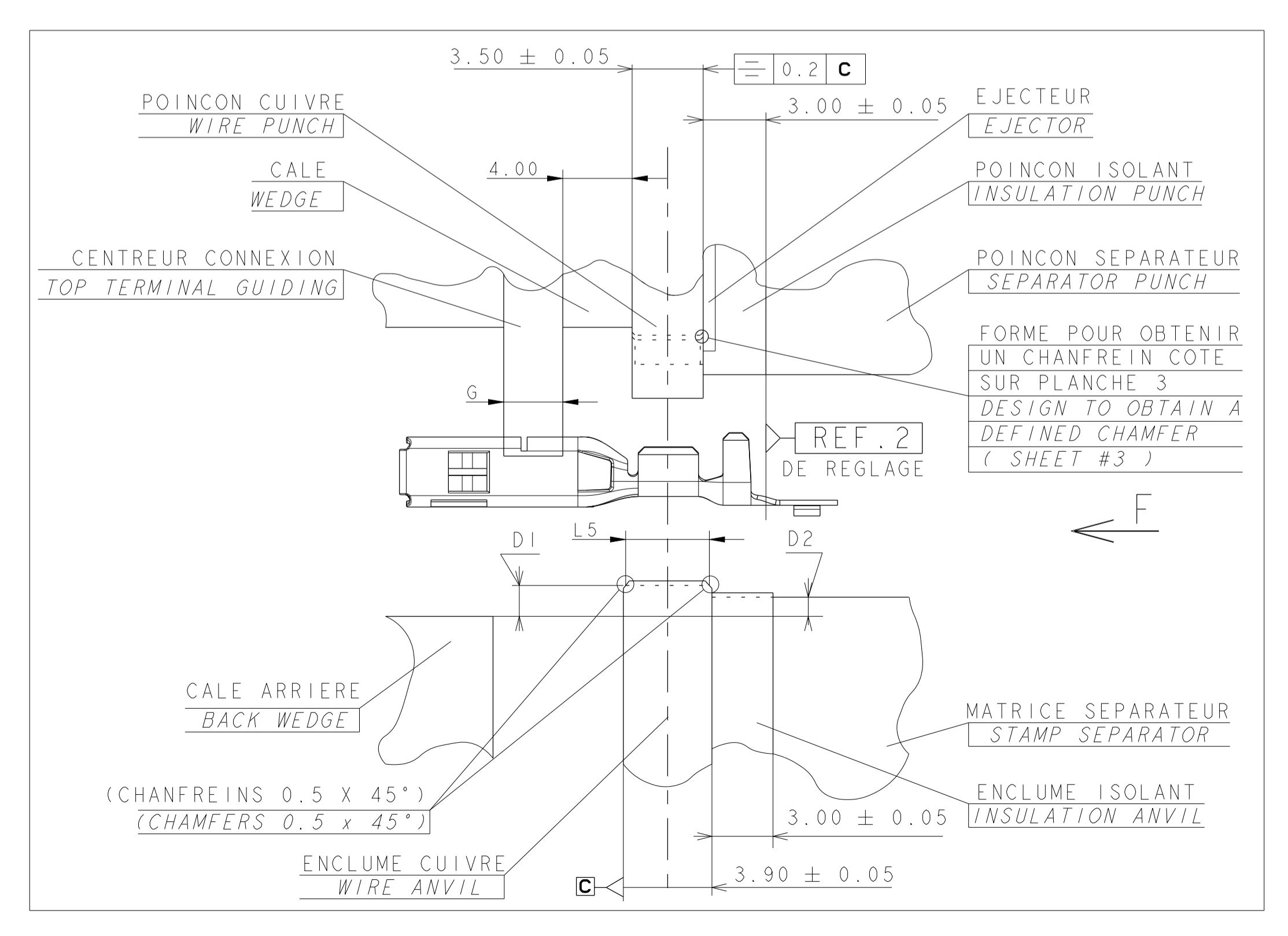
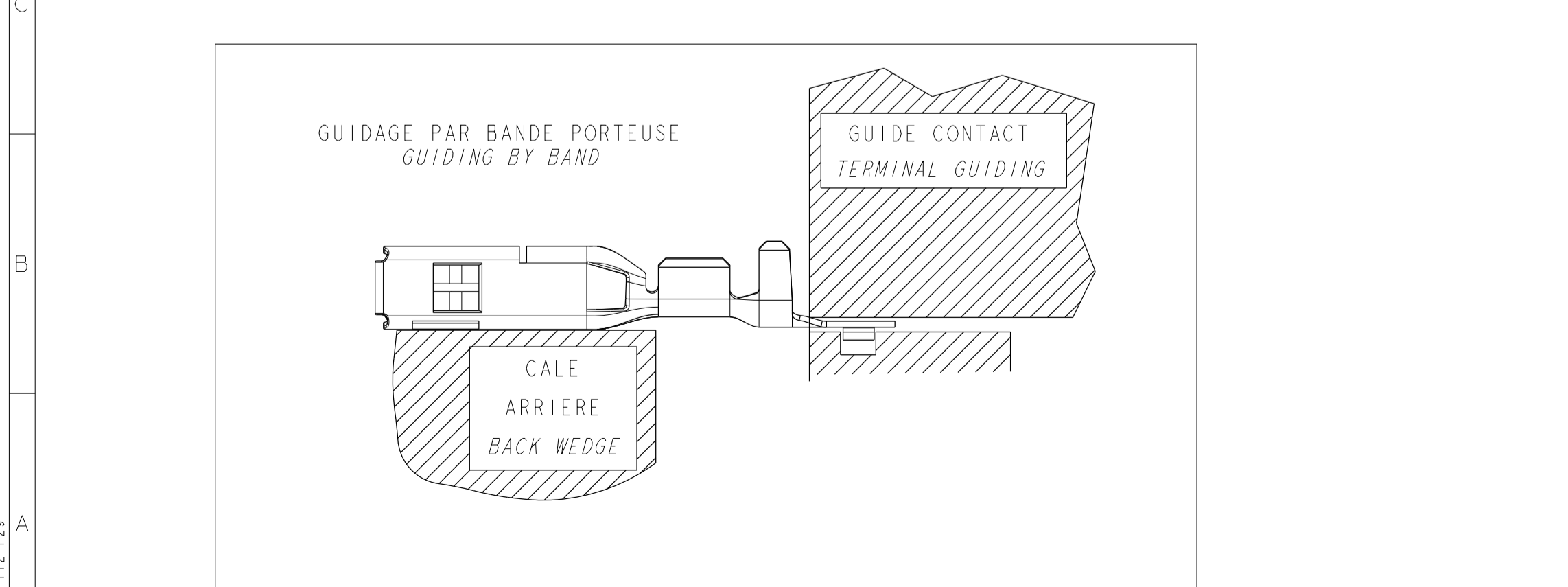
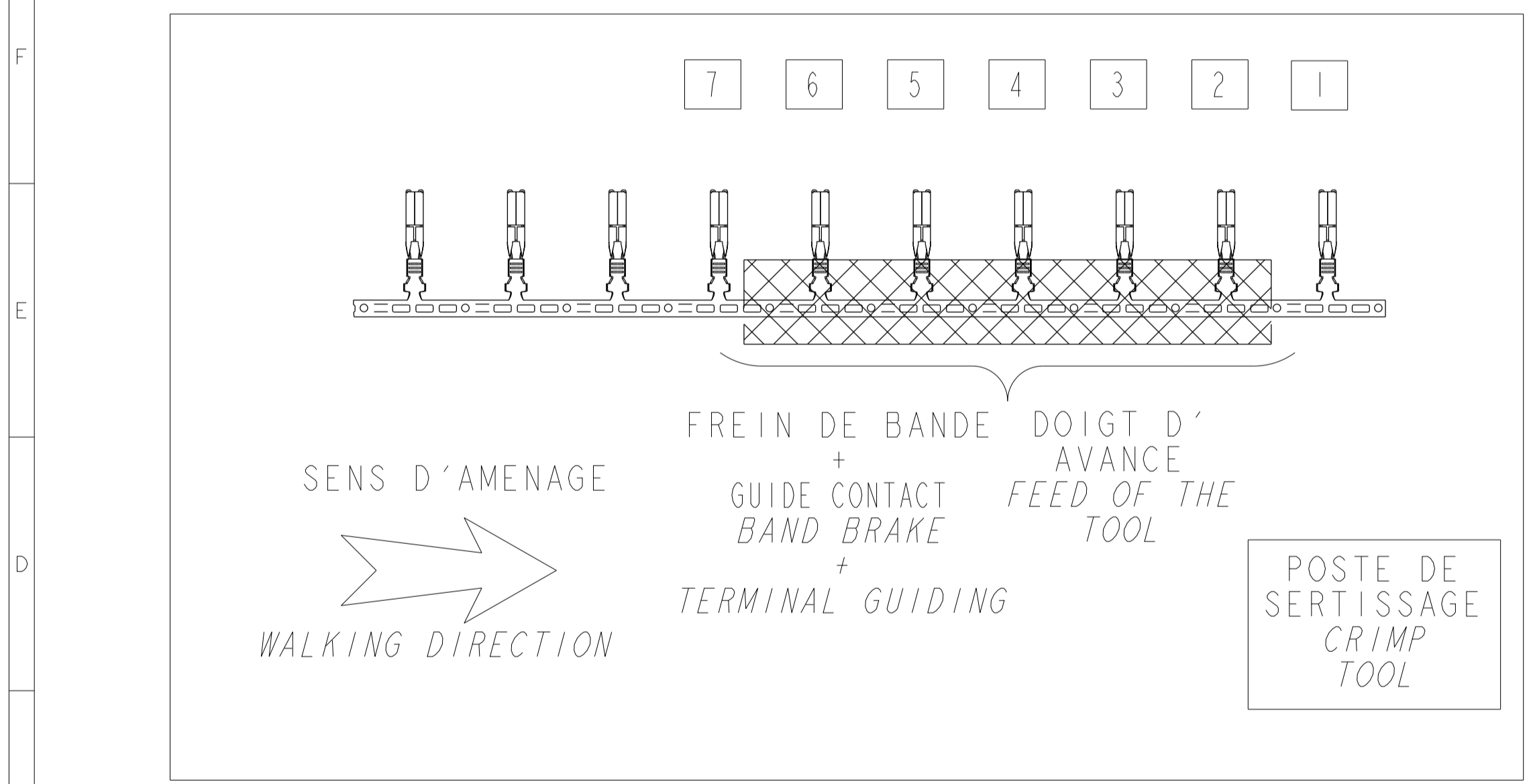
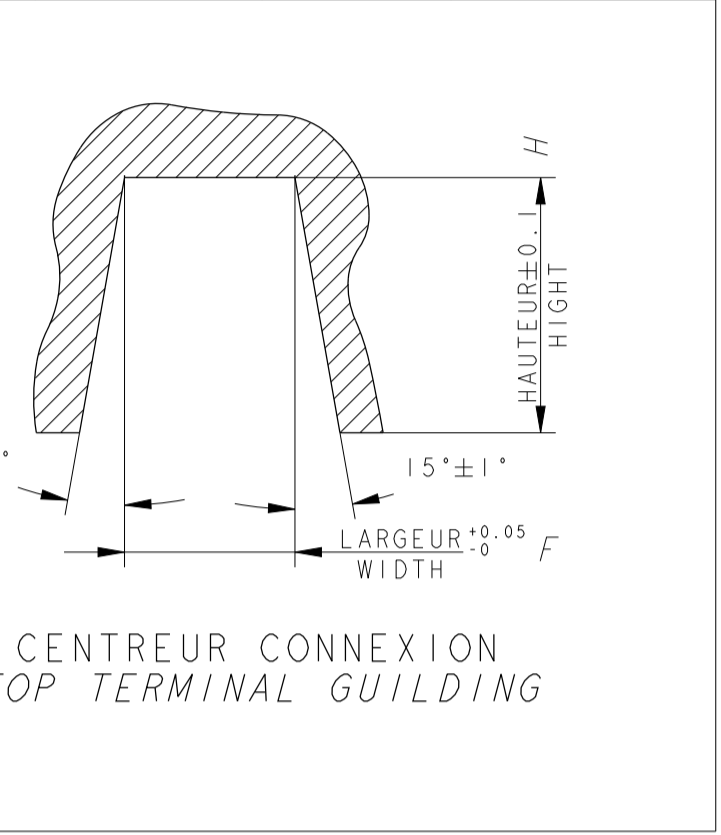
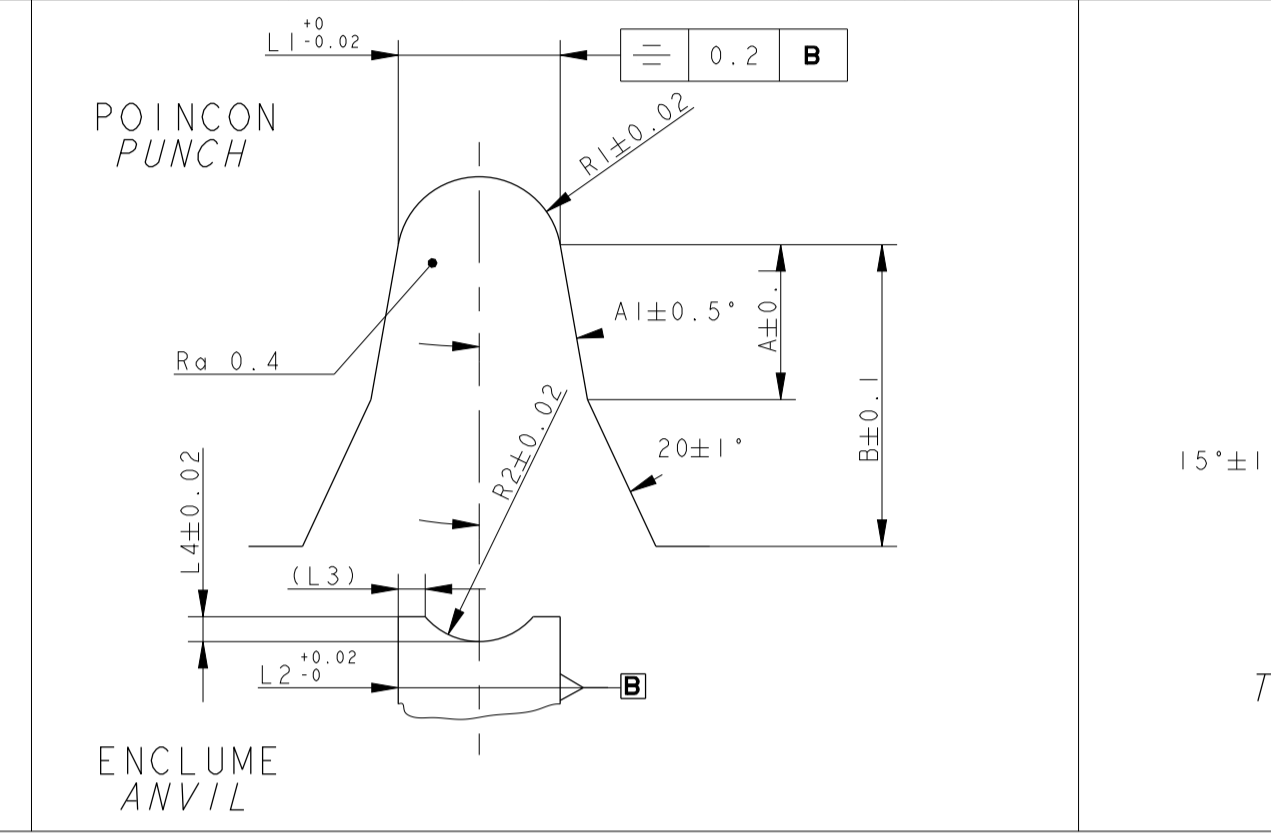
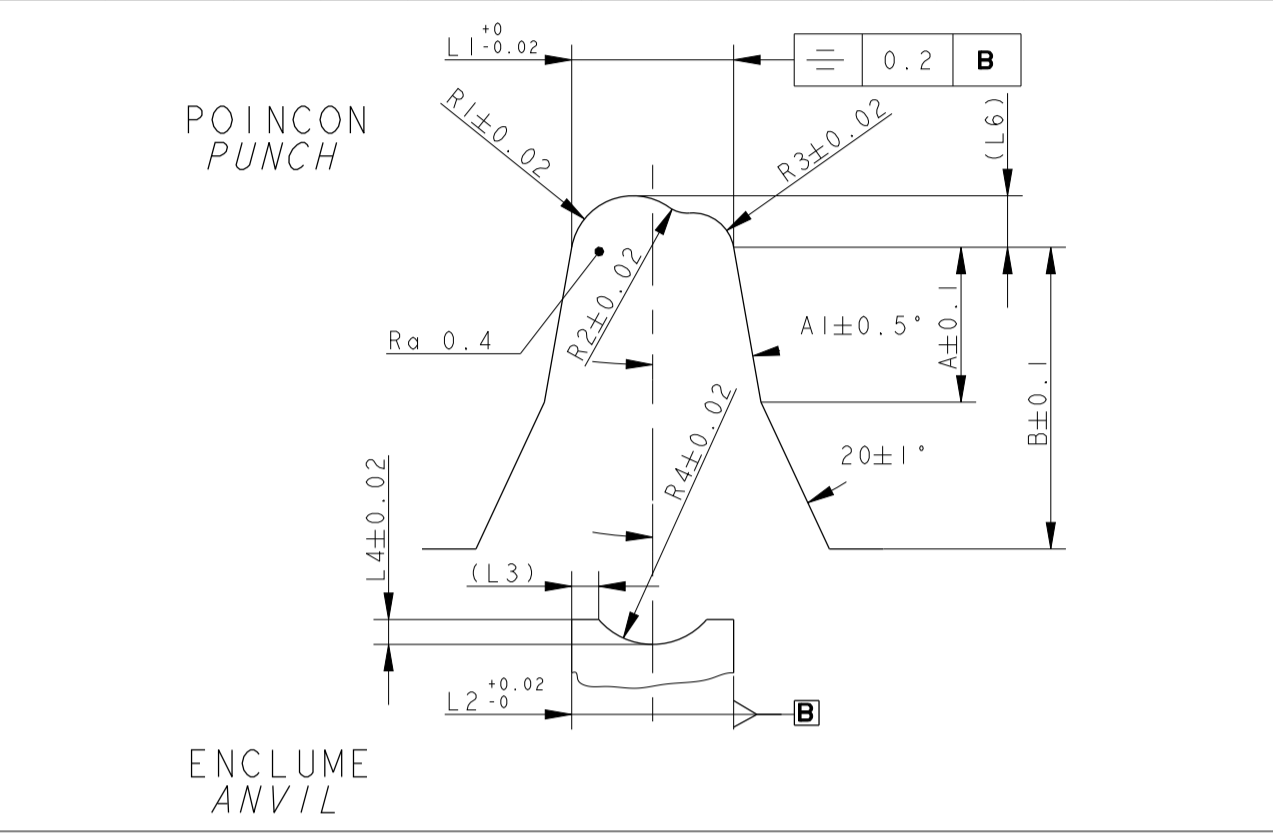
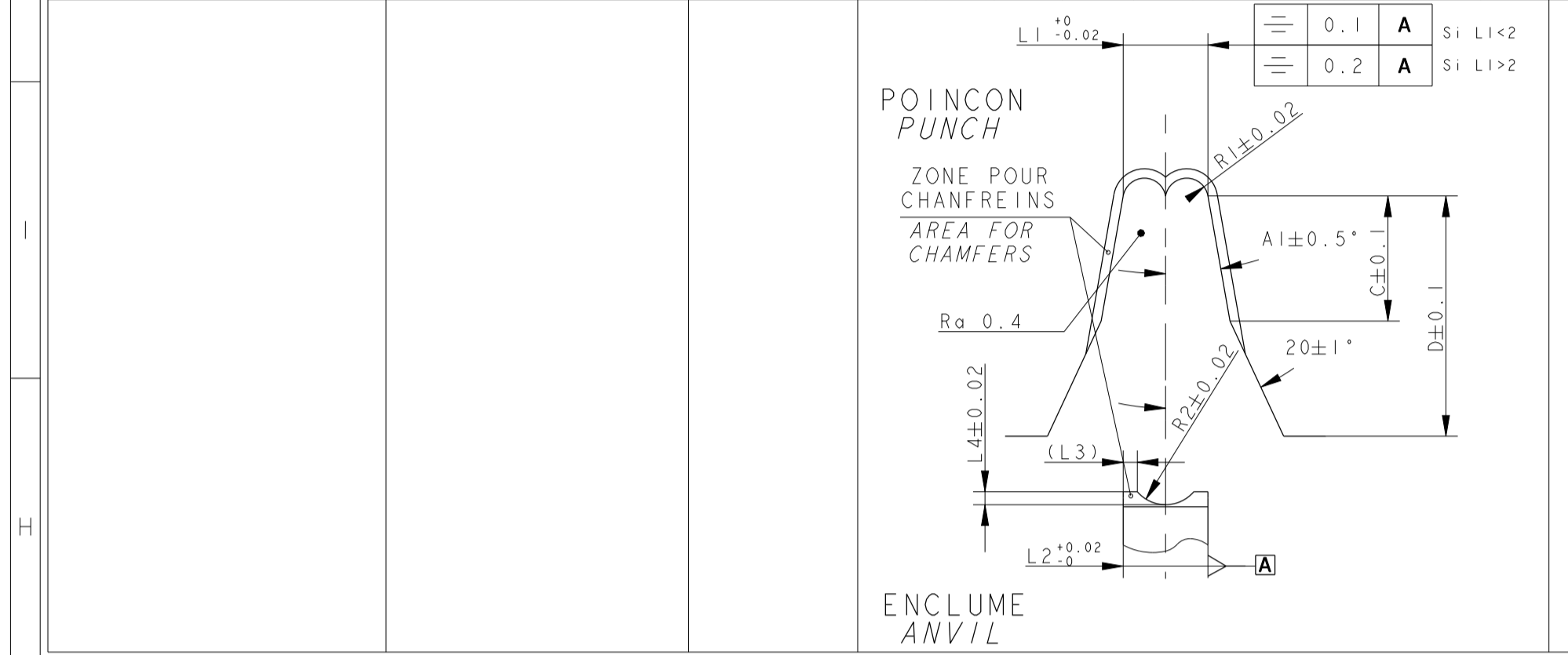
CREATED BY: 20140409 L DOMERGUE PROJECT: 211FT0437

APPROVED BY: 20140409 P FALLAUX

APP. NAME: 20140409 P FALLAUX

SCALE: 1:1

CONTACTS FEMALE TERMINAL		SECTION GAUGE	CUIVRE WIRE												ISOLANT INSULATION												CENTREUR CONNEXION CONNEXION TOP TERMINAL GUIDING														
REFERENCES REFERENCES			POINCON PUNCH						ENCLUME ANVIL						DEPORT STEP BETWEEN BARRELS		FRETTAGE PAR RECOUVREMENT INSULATION BARREL WITH OVERLAPPING						FRETTAGE AVEC JOINT UNITAIRE SUR FIL INSULATION BARREL WITH SINGLE SEAL						LARGEUR WIDTH (F)	EPAISSEUR THICKNESS (G)	HAUTEUR HEIGHT (H)	COURSE DISPLACEMENT (I)									
MVL	DELPHI		C	D	L1	R1	A1	L2	(L3)	L4	L5	R2	D1	D2	A	B	L1	R1	R2	R3	(L6)	A1	L2	(L3)	L4	R4	D1	D2					A	B	L1	R1	A1	L2	(L3)	L4	R2
211 CC 3S 1150 / 1160	10776116 / 10781041	0.35 to 0.70	3.50	7.90	1.60	0.43	2	1.60	(0.20)	0.21	3.46	0.96	0.85	0.75	3.60	8.10	2.50	0.93	0.50	0.65	(0.87)	4	2.50	(0.21)	0.42	1.50	0.75	0	3.50	7.80	3.55	1.77	4	3.55	(0.24)	0.89	1.77	(3.45 mini)	(5)	(3.50)	(9)
211 CC 3S 1460 / 1490	13567906 / 33510895		2.93	7.65	1.86	0.50	2	1.86	(0.23)	0.24	3.37	1.16	1.00	0.50	3.00	8.00	2.95	1.10	0.59	0.77	(1.02)	4	2.95	(0.25)	0.49	1.77	1.00	0.40	4.00	8.00	4.10	2.05	4	4.10	(0.27)	1.03	2.05				
211 CC 3S 2150 / 2160	10776330 / 10726549		3.70	8.20	2.85	0.77	4	2.85	(0.36)	0.44	3.79	1.50	1.00	0.20	4.40	8.60	3.85	1.42	0.77	1.00	1.32	4	3.85	(0.30)	0.67	2.31	0.90	-0.10	4.00	8.00	4.10	2.05	4	4.10	(0.27)	1.03	2.05				
211 CC 3S 2160 / 2190	33501949 / 33501948	135 to 250	3.70	8.20	2.85	0.77	4	2.85	(0.36)	0.44	3.79	1.50	1.00	0.20	4.40	8.60	3.85	1.42	0.77	1.00	1.32	4	3.85	(0.30)	0.67	2.31	0.90	-0.10	4.00	8.00	4.10	2.05	4	4.10	(0.27)	1.03	2.05				
211 CC 3S 2161	10740376		3.70	8.20	2.85	0.77	4	2.85	(0.36)	0.44	3.79	1.50	1.00	0.20	4.40	8.60	3.85	1.42	0.77	1.00	1.32	4	3.85	(0.30)	0.67	2.31	0.90	-0.10	4.00	8.00	4.10	2.05	4	4.10	(0.27)	1.03	2.05				
F866700	33510896	300 to 400	4.10	9.10	3.20	0.87	4	3.20	(0.40)	0.50	3.89	1.70	0.60	0.20	5.50	9.50	4.10	1.52	0.82	1.07	(1.41)	4	4.10	(0.34)	0.69	2.46															



* (VALEUR) UNIQUEMENT POUR INFORMATION (VALUE) FOR INFORMATION ONLY

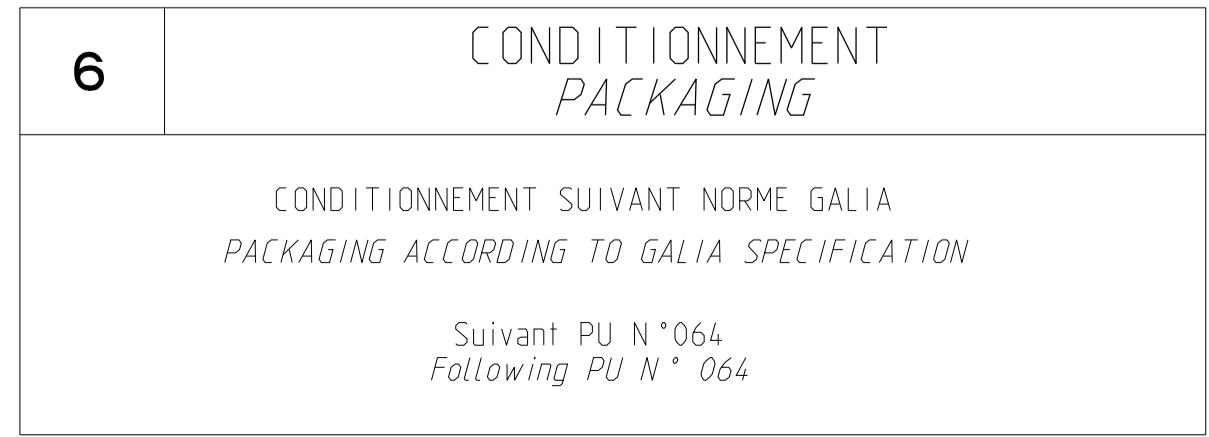
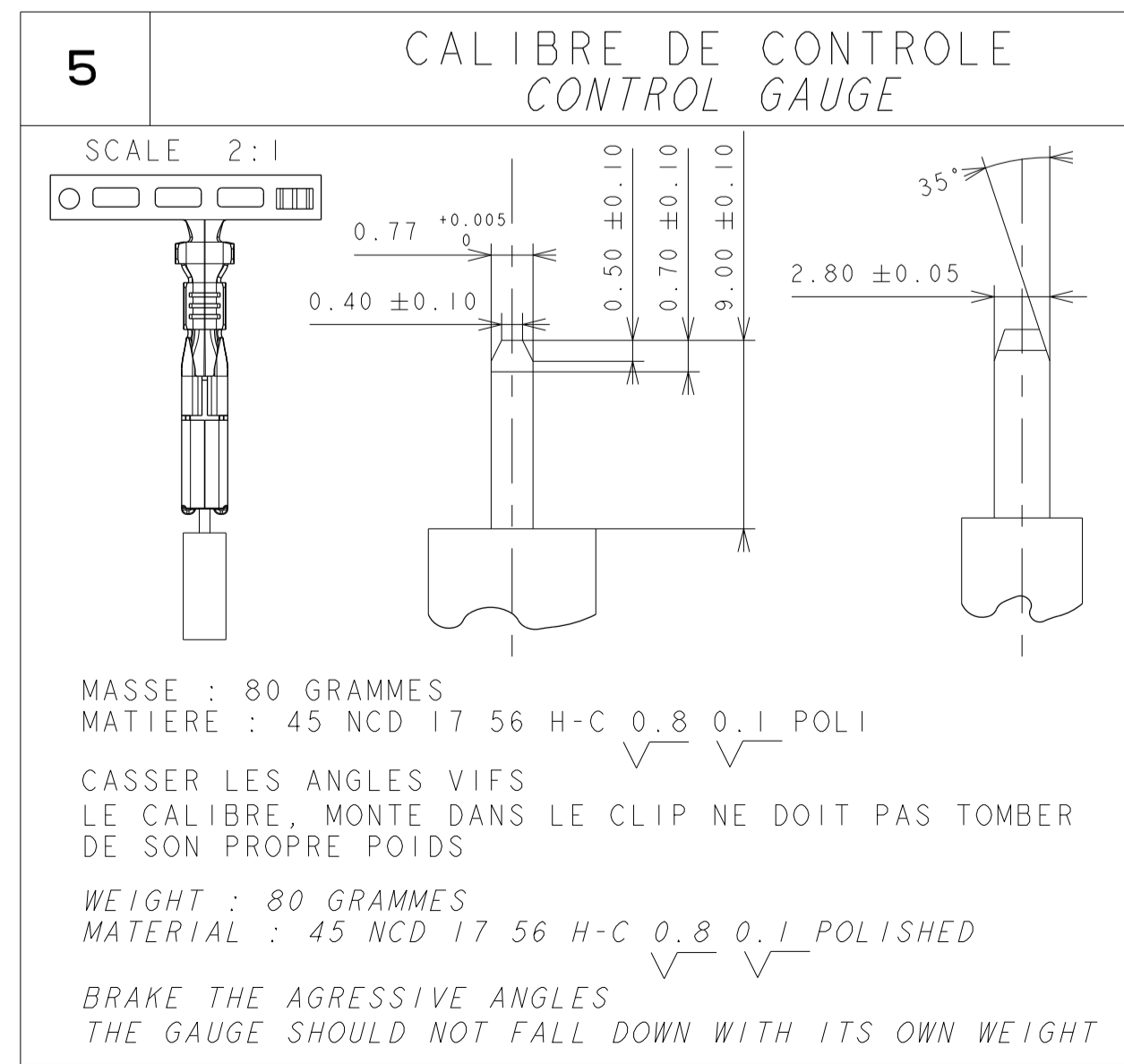
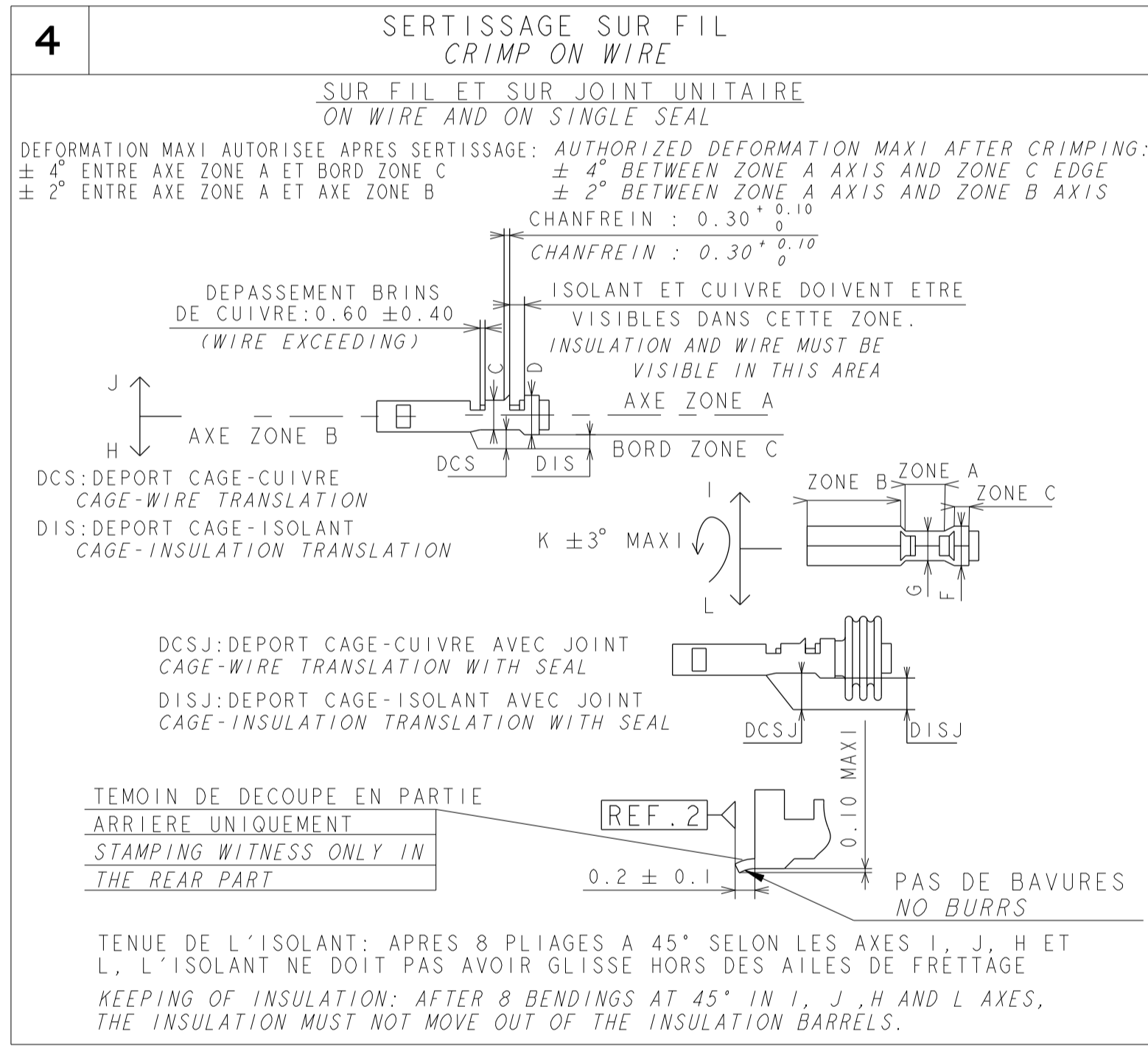
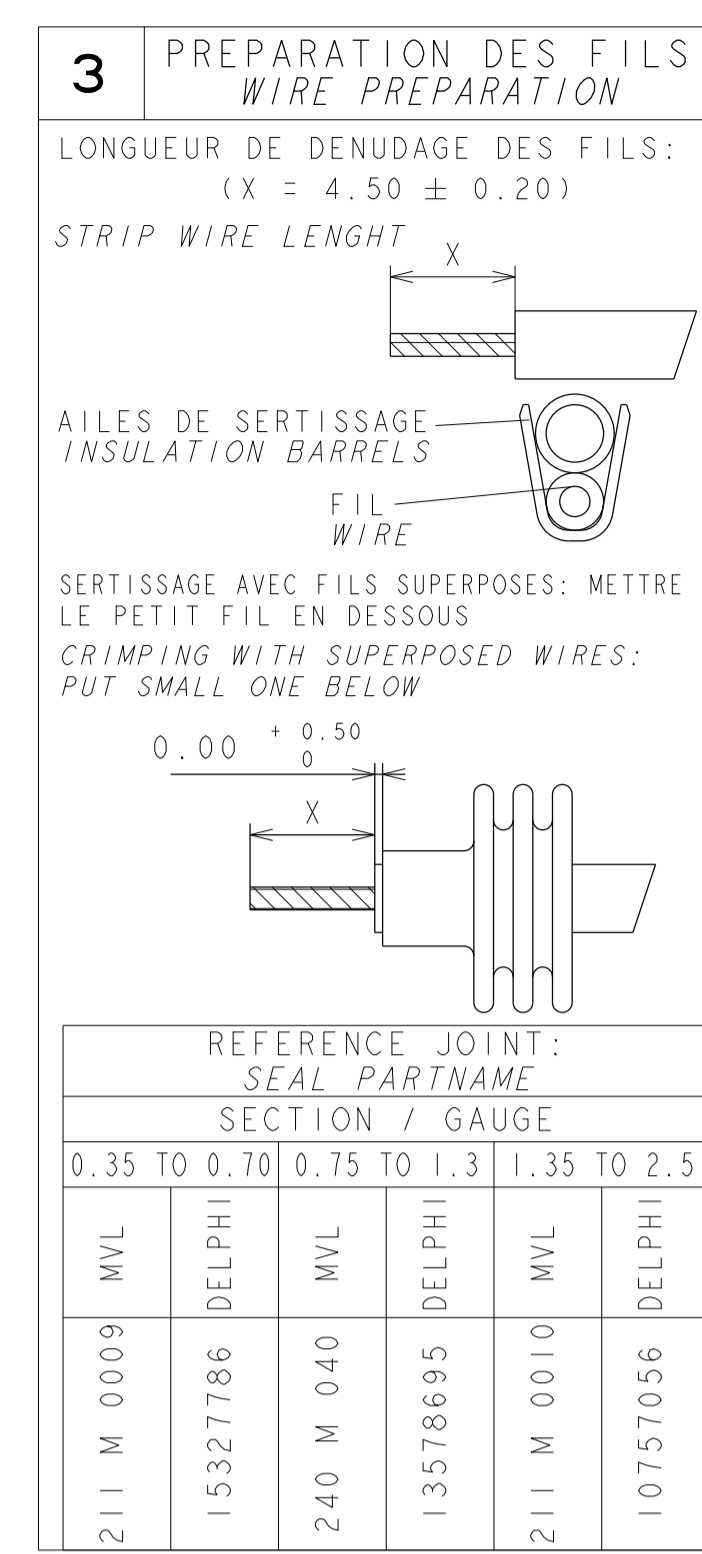
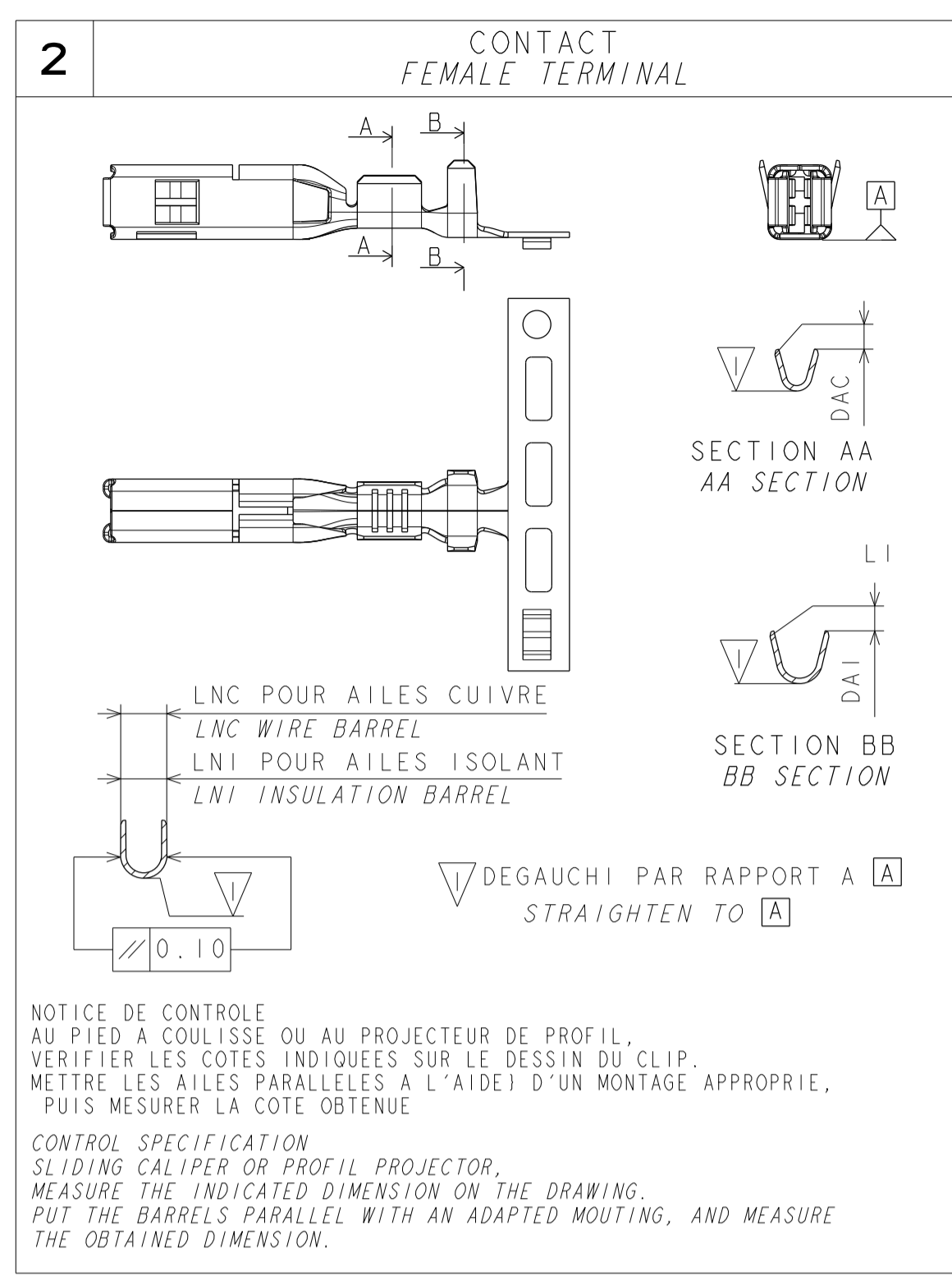
14-01621	DELPHI P/N ADDED		
ECN-NO. NUMERO ECH	POSITION	CHANGE DESCRIPTION MODIFICATION	
PROJET SPEC. SPECIF. PRODUIT	PACKAGING SPEC. SPECIF. EMBALLAGE	APPLICATION SPEC. SPECIF. APPLICATION	COPYRIGHT DELPHI CORPORATION AND/OR ITS AFFILIATES. ALL RIGHTS RESERVED. REVISED THIS DRAWING IS THE PROPERTY OF DELPHI CORPORATION AND CONTAINS DELPHI CONFIDENTIAL INFORMATION. THE REPRODUCTION, DISTRIBUTION AND RELEASE OF THIS DOCUMENT OR ITS CONTENTS IN ANY MANNER OR BY ANY MEANS WITHOUT THE WRITTEN AUTHORIZATION OF DELPHI CORPORATION IS PROHIBITED. IL EST INTERDIT DE REPRODUIRE, DISTRIBUER OU DE LANCER EN PUBLIC CE DOCUMENT OU SON CONTENU EN L'ABSENCE D'AUTORISATION ECRITEE DE DELPHI CORPORATION.
TOLERANCES DIMENSIONS	±0.2 ±0.1	MATERIE: MATERIAL	SEE TABLE
CONTRÔLEUR N° CONTRÔLEUR #		COLOR: COLOR	
DO NOT MEASURE DRAWING NE PAS MESURER LE DRESSING		ECO NO. CODE	ECO LEX: C64 FE
DATE	NAME	TITLE	DESIGNATION
20090701	F FAUBOURG	28 x 08 FEMALE TERMINAL	
CREATED BY CONCÉPTEUR	DATE		
20090701			
APPROVED BY APProuvé	DATE		
20100409			
FILE NAME NOM DE FICHER	NUMERO ESP NUMBER CAP	FBA-0332	
211FT0437			

EUR C04 112 F29

NOUVELLES GAMMES DE SERTISSAGE NEW RANGE OF CRIMPING

1		PARAMETRES DE SERTISSAGE CRIMP PARAMETERS										FILS SUIVANT SPECIF PSA N°: 96 095 032 99 (1R) ET 96 347 082 99 (1D) WIRES ACCORDING TO PSA SPEC N°: 96 095 032 99 (1R) ET 96 347 082 99 (1D)										
CONTACT FEMALE TERMINAL				SERTISSAGE CUIVRE WIRE BARREL				FRETAGE ISOLANT INSULATION BARREL				PAR RECouvreMENT WITH OVERLAPPING		AVEC JOINT UNITAIRE WITH SINGLE SEAL				TYPE FIL WIRE				
SECTION GAUGE	DAC MAXI	DAI MAXI	LNC ± 0.25	LNI ± 0.25	DCS ± 0.10	DIS ± 0.10	DISJ ± 0.10	SECTION SECTION (mm²)		(LARGEUR) (WIDTH)	HAUTEUR (HEIGHT)	Ø EQU. Ø EQU.	(LARGEUR) (WIDTH)	(HAUTEUR) (HEIGHT)	(LARGEUR) (WIDTH)	(HAUTEUR) (HEIGHT)			IR	ID		
								THEORIQUE THEORETIC	RÉELLE REAL													
0.35 to 0.70	0.25	0.25	2.40	3.40	0.85	0.75	0	0.35	0.32	(1.65)	1.09	1.30	(2.52)	(2.02)						ID		
								0.50	0.49	(1.65)	1.17	1.50	(2.53)	(2.05)	(3.31)	(3.13)	ID					
								0.35 + 0.35	0.68	(1.65)	1.25	2.03	(2.59)	(2.31)			ID					
								0.75	0.72	(1.90)	1.31	1.86	(3.00)	(2.20)	(3.85)	(3.22)	ID					
								0.85	0.86	(1.91)	1.40	1.80	(3.05)	(2.23)	(3.49)	(2.97)	ID					
								1.00	0.93	(1.91)	1.40	1.90	(3.02)	(2.41)	(3.87)	(3.41)	ID					
0.75 to 1.30	0.25	0.25	2.40	3.40	1.00	0.50	-	1.25	1.25	(1.92)	1.56	2.15	(3.10)	(2.56)	(3.66)	(3.17)						
								0.35 + 0.5	0.83	(1.91)	1.39	2.11	(3.09)	(2.52)								
								0.35 + 0.75	1.06	(1.91)	1.48	2.31	(3.11)	(2.65)								
								0.35 + 1	1.27	(1.92)	1.57	2.43	(3.11)	(2.65)			ID					
								0.50 + 0.50	0.98	(1.91)	1.45	2.19	(3.10)	(2.60)								
								0.50 + 0.75	1.21	(1.92)	1.54	2.38	(3.11)	(2.65)								
1.35 to 2.50	0.25	0.25	2.40	3.40	1.00	0.20	-0.10	1.4	1.33	(2.85)	1.42	2.30	(3.89)	(2.56)	(3.86)	(3.36)						
								1.5	1.53	(2.87)	1.47	2.20	(3.90)	(2.72)	(3.91)	(3.58)						
								2	1.82	(2.88)	1.55	2.60	(3.91)	(3.05)	(4.05)	(4.06)						
								2	1.73	(2.88)	1.53	2.10	(3.89)	(2.65)	(3.88)	(3.47)	T6					
								2.5	2.62	(2.93)	1.77	2.80	(3.92)	(3.23)	(4.10)	(4.20)						
								0.35 + 1	1.27	(2.85)	1.40	2.43	(3.91)	(2.91)			ID					
3.00 to 4.00	0.25	0.25	2.40	3.40	1.00	0.90	-	0.50 + 1.50	2.02	(2.90)	1.61	2.19	(3.92)	(3.22)								
								0.60 + 1	1.52	(2.87)	1.47	2.75	(3.92)	(3.18)			ID					
								0.60 + 1.40	1.92	(2.89)	1.58	3.10	(3.94)	(3.53)			IR					
								0.75 + 0.75	1.44	(2.86)	1.45	2.56	(3.91)	(3.01)								
								0.75 + 1.5	2.25	(2.91)	1.67	2.96	(3.93)	(3.38)								
								1 + 1	1.86	(2.89)	1.56	2.79	(3.92)	(3.22)			ID					
										IR												

(VALEUR): UNIQUEMENT POUR INFORMATION
(VALUE): FOR INFORMATION ONLY



14-01621									
ECN-NO. NUMERO ECN	POSITION	CHANGE DESCRIPTION MODIFICATION	DELPHI P/N ADDED						
PROJECT SPEC. SPECIF. PRODUIT	PACKAGING SPEC. SPECIF. EMBALLAGE	APPLICATION SPEC. SPECIF. APPLICATION	COPYRIGHT DELPHI CORPORATION AND/OR ITS AFFILIATES. ALL RIGHTS RESERVED. REVISED						
TOLERANCES TOLERANCES	±0.2	±2	MATERIAL: MATERIE:	SEE TABLE	ETAT DE SURFACE	DELPHI			CAU SYSTEM
CONTROL NO. NUMERO MATRIE			COLOR: COULEUR			DELPHI ELECTRICAL/ELECTRONIC ARCHITECTURE EPSON, FRANCE			pro / eng.
DO NOT REASURE DRAWING NE PAS REASURE LE DRESS			TOOL NO. NUMERO OUTIL		ECO EXT. CODE CODE E.C.	ISO PROJECTION PROJECTION ISO	DELPHI CORPORATION AND/OR ITS AFFILIATES. ALL RIGHTS RESERVED. REVISED		
CREATED BY CREEVEUR	DATE	NAME NOM	TITLE DESIGNATION	28 x 08 FEMALE TERMINAL			DRAWING NUMBER REF. PLAN	REV. IND.	APPROVAL LEVEL NIV. D'APPROBATION
CONTROL NO. NUMERO MATRIE	20140400	L DOMERGUE	PROJECT	28 x 08 FEMALE TERMINAL			211FT0437	G	SHEET FEUILLE
APPROVED BY APPR. PAR	20140400	F FAURIE	PROJECT	28 x 08 FEMALE TERMINAL			211FT0437	3	3
APPROVED BY APPR. PAR	20140400	P PARIS CAPPE	ESR NO. NUMERO ESP	FBA-0332	NUMERO CAP.				4:1
FILE NAME NOM DE FICHER	211FT0437								

X-ON Electronics

Largest Supplier of Electrical and Electronic Components

Click to view similar products for [Automotive Connectors](#) category:

Click to view products by [APTIV](#) manufacturer:

Other Similar products are found below :

[003-018-000](#) [60403001](#) [60993906-B](#) [M902-2131](#) [M902-2161](#) [72.330.1035.1](#) [73.353.4028.0](#) [F119300-B](#) [F166900](#) [F258300-B](#) [F358300-B](#)
[F407400](#) [F444110](#) [F487000](#) [F509500B-B](#) [827153-1](#) [8N1515-32-24P](#) [9-1326729-8](#) [925474-1](#) [928905-1](#) [964562-4](#) [968782-1](#) [GT17SA-8DS-](#)
[HU](#) [98891-1012](#) [98947-1016](#) [12004475-L](#) [12010290](#) [12010309-B](#) [12015454](#) [12020219-B](#) [12020308](#) [12041318-B](#) [12052225-L](#) [12052466](#)
[12059125](#) [12064869](#) [12004327-B](#) [12010503-B](#) [12015308](#) [12015384](#) [12015909](#) [1-21030-1](#) [12041254](#) [12041318](#) [12047946-B](#) [12047957](#)
[12047957-L](#) [12059473](#) [12066261](#) [12110546](#)