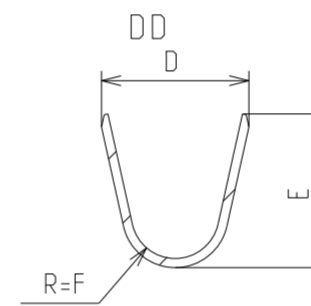
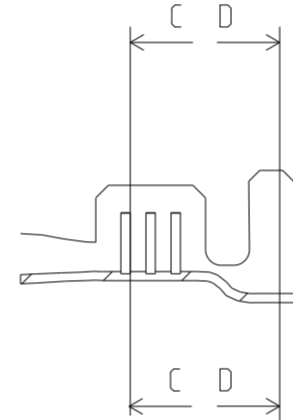
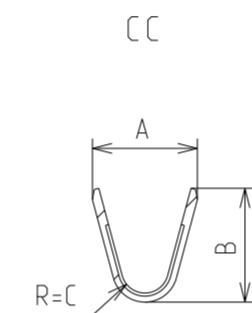
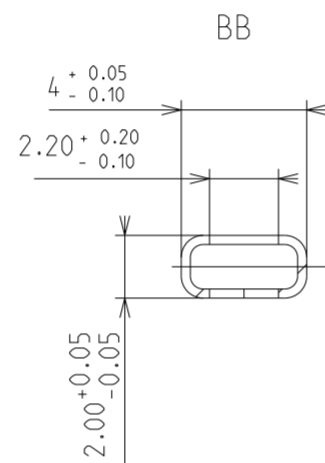
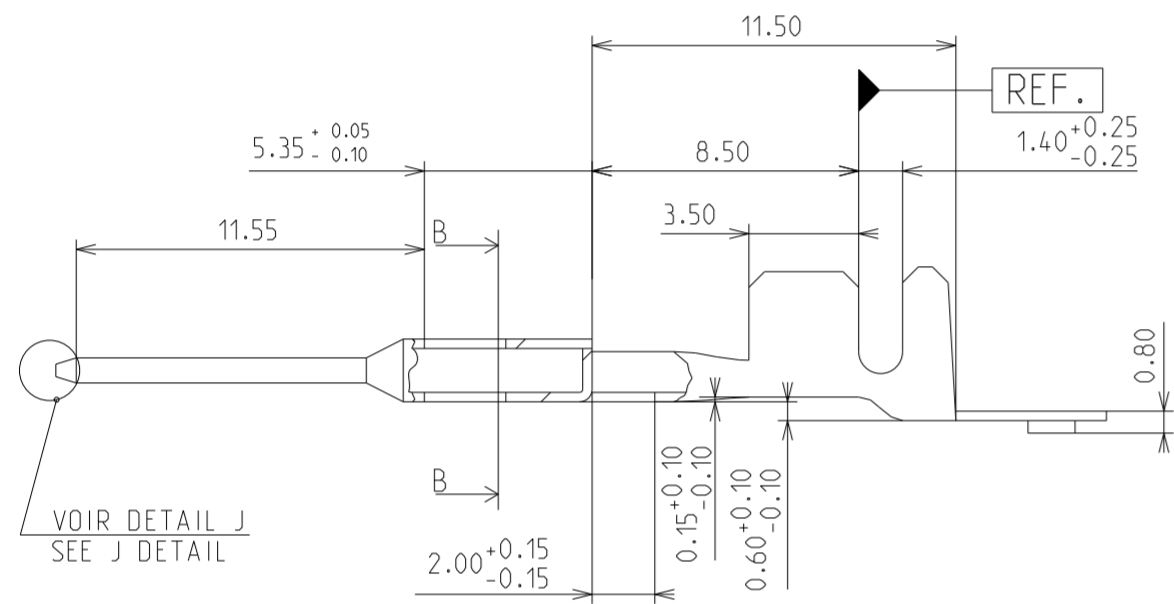
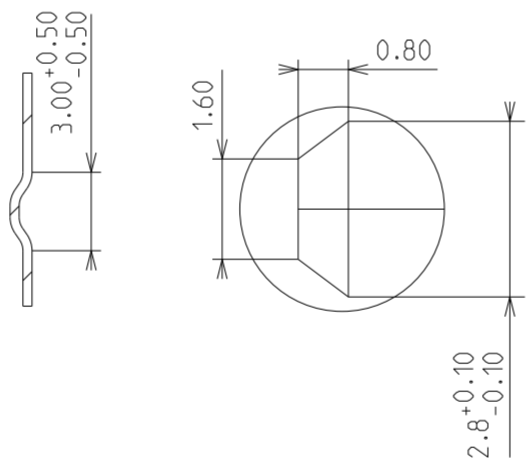


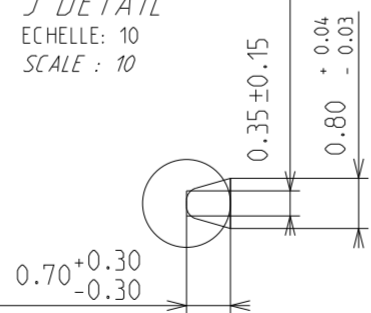
Etat / State		Références								Material	Classe
		JUF / SWS				JUF / SWS					
Pr-é-tamé / Pre-tinned Sn 1 to 3µm	P / N	211 CL 3 S 1160	DELPHI (B) 10779316	211 CL 3 S 1161	DELPHI (B) 10781143	211 CL 3 S 2160	DELPHI (B) 10756743	211 CL 3 S 2161	DELPHI (B) 10793682	Cu Sn 0.1	125°
	Rev.	B	01	E	01	A	01	B	01		
Section / Gauge		0.35 to 0.75				1 to 2.5					
∅ Isolant / Insulation		1.3 to 2.1				2.1 to 3					
A		2.9				3.4					
B		2.2				3.6					
R=C		0.9				0.9					
D ±0.3		4		4.3		4.7		5			
E		3.3		4.10		4.9		5.3			
R=F		1.4		1.4		1.4		1.7			
POIDS sans bande porteuse / WEIGHT without strip carrier		0.00043Kg		0.00042Kg		0.00049Kg		0.00047Kg			



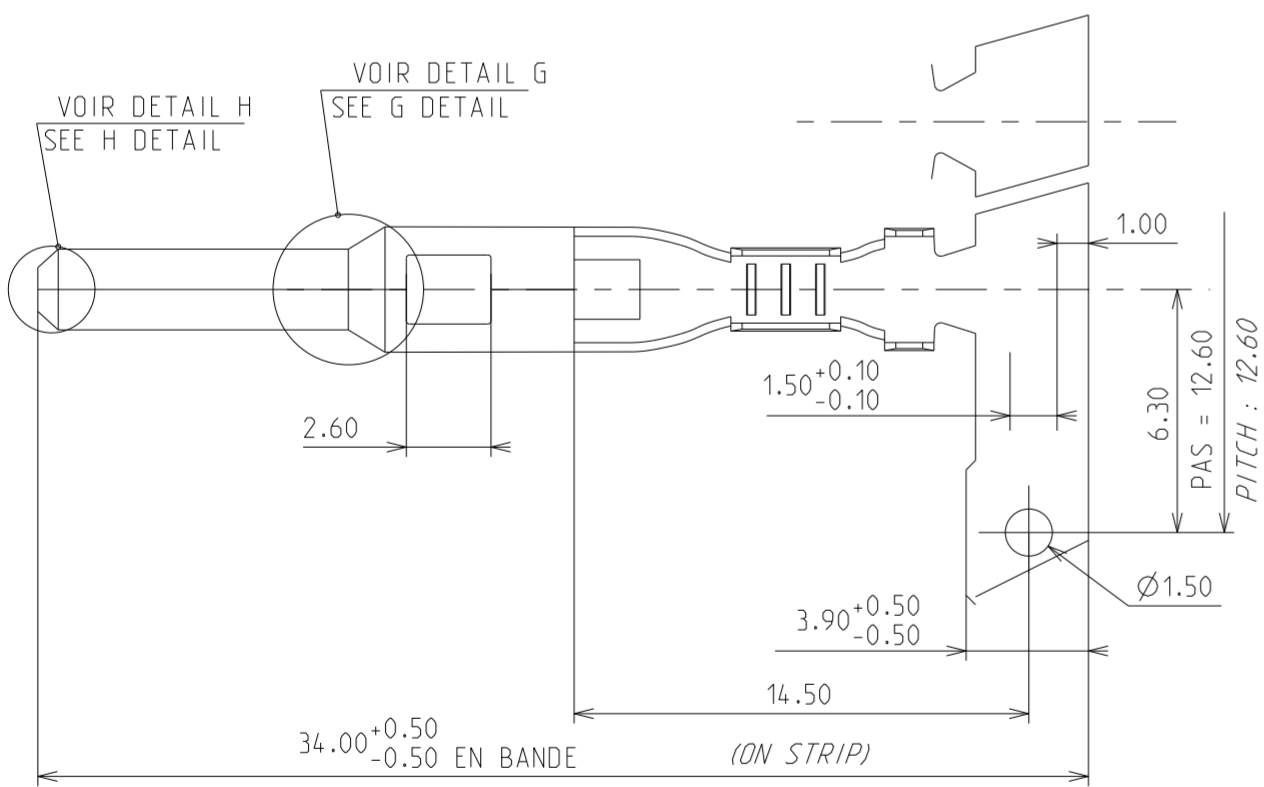
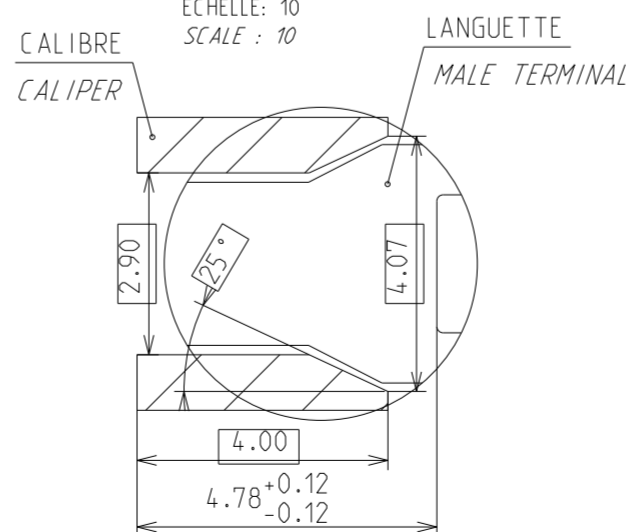
DETAIL H
H DETAIL
Echelle: 10
SCALE: 10



DETAIL J
J DETAIL
Echelle: 10
SCALE: 10

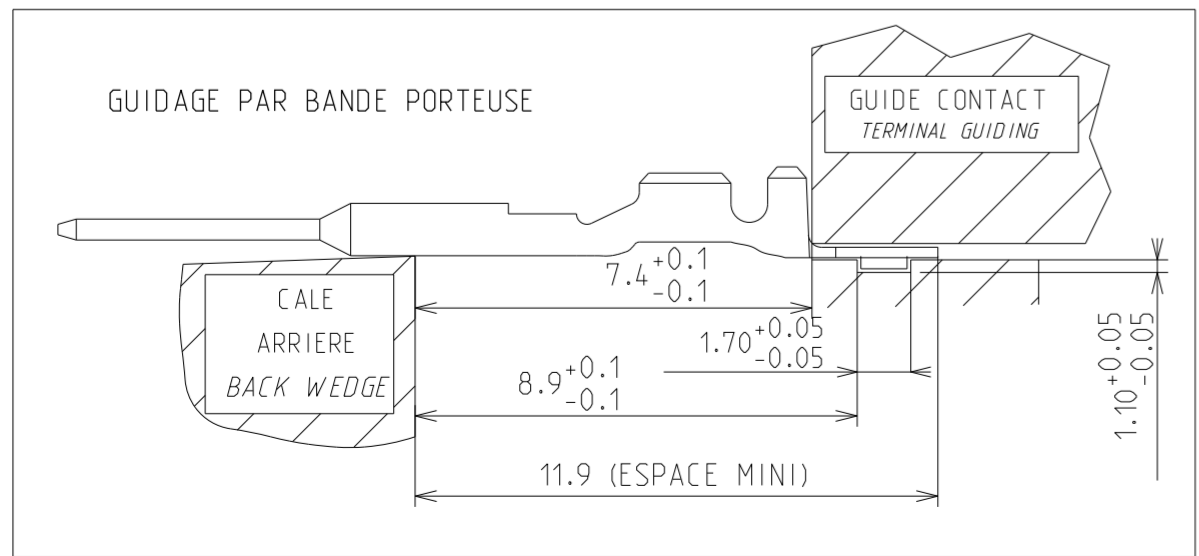
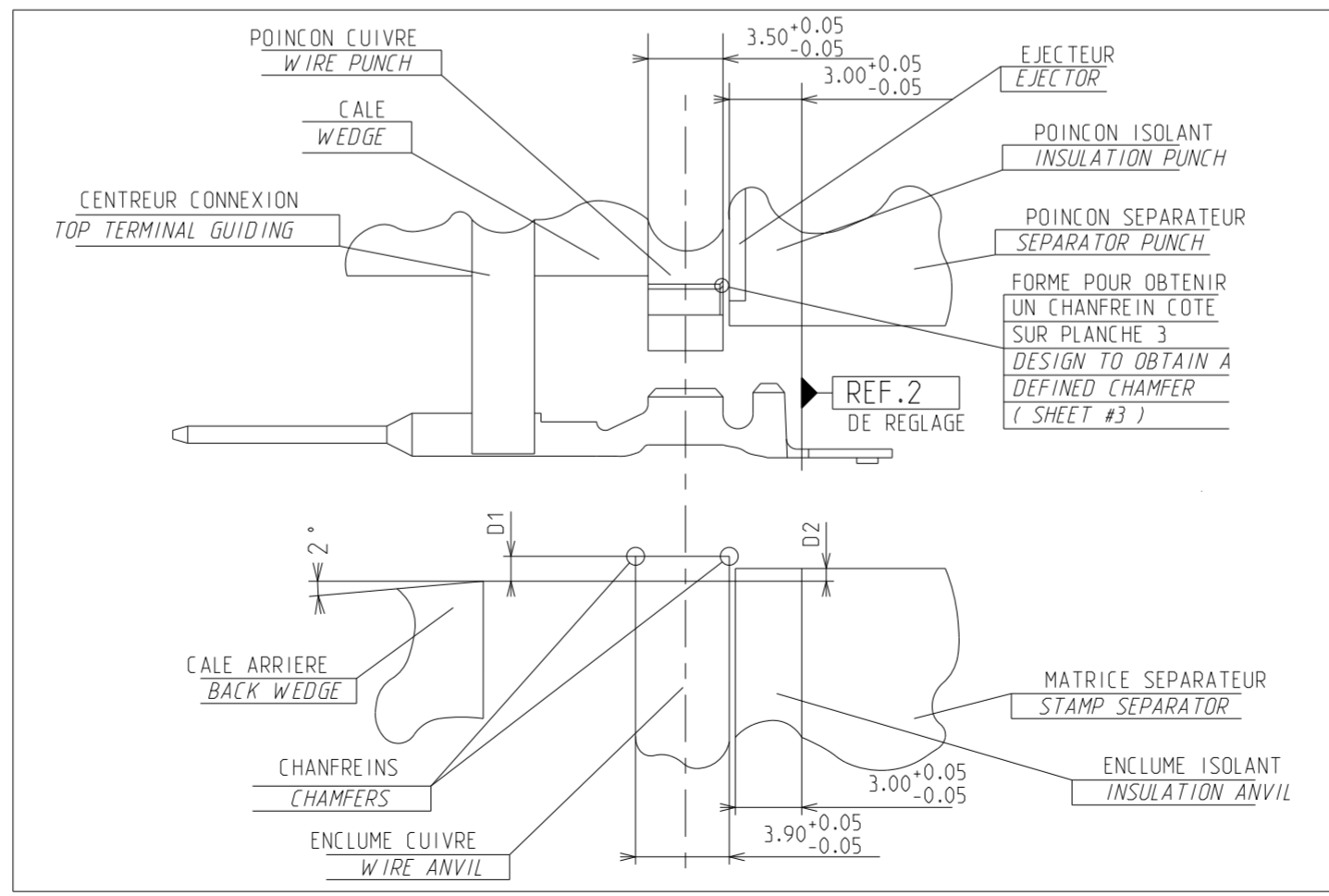
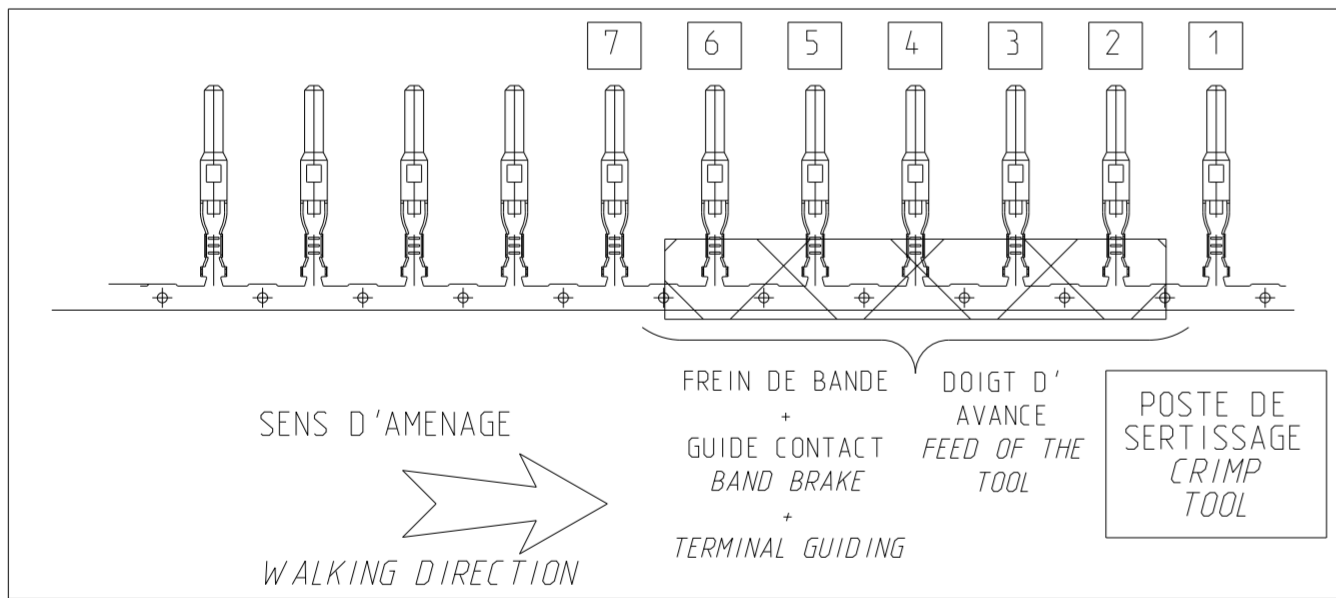
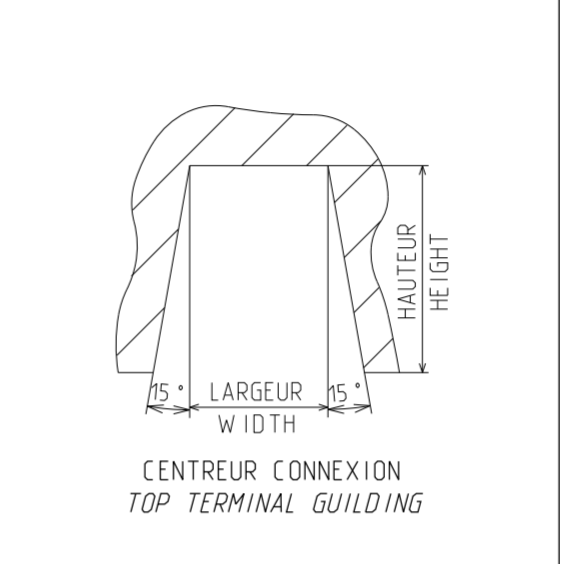
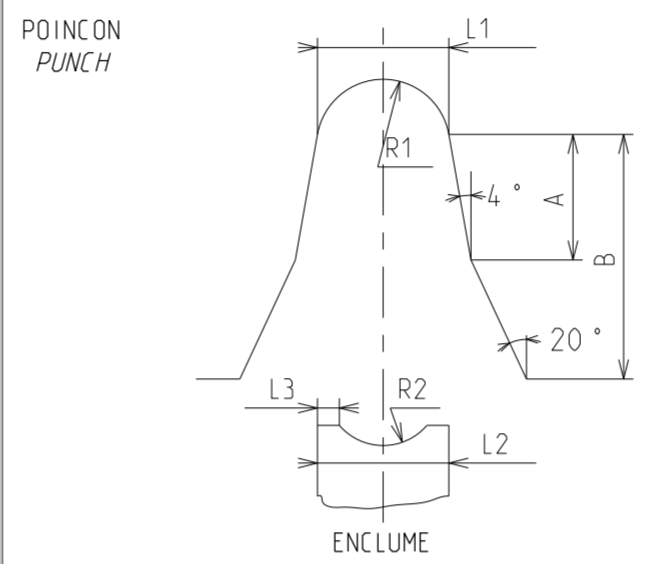
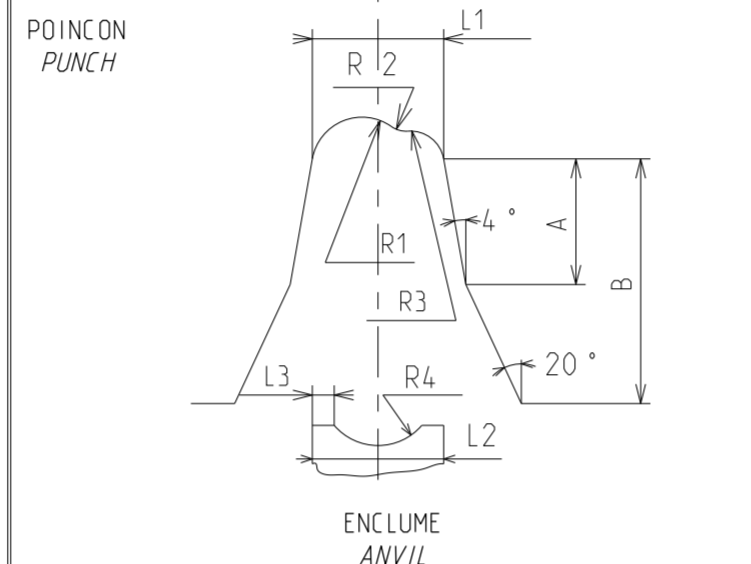
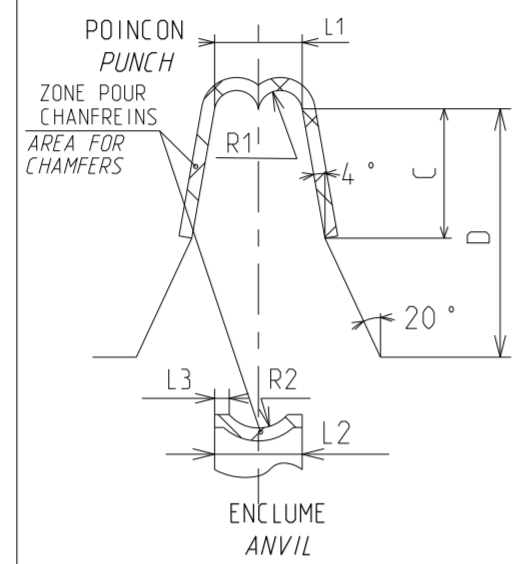


DETAIL G
G DETAIL
Echelle: 10
SCALE: 10



ECN-NO. NUMERO ECN	POSITION POSITION	CHANGE DESCRIPTION MODIFICATION	
-		-	
-		-	
-		-	
-		-	
-		DELPHI P/N ADDED	
PRODUCT SPEC. SPECIF. PRODUIT	PACKAGING SPEC. SPECIF. EMBALLAGE	APPLICATION SPEC. SPECIF. APPLICATION	COPYRIGHT DELPHI CORPORATION AND/OR ITS AFFILIATES. ALL RIGHTS RESERVED. REVISED THIS DRAWING IS THE PROPERTY OF DELPHI CORPORATION AND CONTAINS DELPHI CONFIDENTIAL INFORMATION. THE REPRODUCTION, DISTRIBUTION AND UTILIZATION OF THIS DOCUMENT OR ITS RELATED CAD DATA, AS WELL AS COMMUNICATION OF ANY CONTENT TO OTHERS, WITHOUT EXPRESS AUTHORIZATION, IS PROHIBITED. CE PLAN EST LA PROPRETE DE DELPHI CORPORATION ET CONTIENT DES INFORMATIONS DELPHI CONFIDENTIELLES. LA REPRODUCTION, LA DISTRIBUTION ET L'UTILISATION DE CE DOCUMENT OU DE SES DONNEES MATHEMATIQUES CAD, AINSI QUE LA COMMUNICATION DE TOUT CONTENU A AUTRUI, SANS AUTORISATION EXPRESSE, EST INTERDITE.
TOLERANCES TOLERANCES	± 0.2 ± 2*	MATERIAL : MATIERE :	SEE TABLE
COUNTERPART No. CONTRE-PARTIE N°		SURFACE FINISH ETAT DE SURFACE	
DO NOT MEASURE DRAWING NE PAS PRENDRE DE COTES		ECO Loc. Code CODE B.E.	FE
CREATED BY CREE PAR	DATE 1999-02-24	NAME FF	TITLE DESIGNATION
MODIFIED BY MODIF. PAR	2013/07/01	F FAURIE	PROJECT PROJET
CHECKED BY VERIF. PAR	2013/07/02	L DOMERGUE	SICMA 3
APPROVED BY APPR. PAR	2013/07/02	Patrice CAPPE	ESR NO. NUMERO ESR
FILE NAME NOM DE FICHIER	PCC0801503	FRA-0332	CAT. NO. NUMERO CAT.
		DOCUMENT UNDER PDS CONTROL / DOCUMENT GERE SOUS P.D.S. NO MODIFICATION ALLOWED OUTSIDE / PAS DE MODIFICATION EN DEHORS	
DRAWING NUMBER REF. PLAN		REV. IND.	
PCC0801503		B	
STATE ETAT		SHEET FEUILLE	
SERIAL RELEASED		1 of 1 sur 3	
PART NUMBER REF. ARTICLE		REV. IND.	
See Table		3	
		SCALE ECH.	
		1:1	

CONTACTS FEMALE TERMINAL		GAUGE SECTION	CUIVRE WIRE						ISOLANT												INSULATION				CENTREUR CONNEXION CONNEXION TOP TERMINAL GUIDING										
REFERENCE	DELPHI		POINCON PUNCH			ENCLUME ANVIL			FRETTAGE PAR RECOUVREMENT INSULATION BARREL WITH OVERLAPPING						FRETTAGE AVEC JOINT UNITAIRE SUR FIL INSULATION BARREL WITH SINGLE SEAL						LARGEUR WIDTH	EPAISSEUR THICKNESS	HAUTEUR HEIGHT	COURSE DISPLACEMENT											
MVL	DELPHI		C	D	L1	R1	L2	L3	R2	D1	D2	A	B	L1	R1	R2	R3	L2	L3	R4	D1	D2	A	B	L1	R1	L2	L3	R2						
211 CL 3 S 1160	10779316	0.35 TO 0.75	2.90	7.20	2.10	0.57	2.10	0.26	1.26	0.30	-0.30	3.60	8.10	2.50	0.93	0.50	0.65	2.50	0.21	1.50															
211 CL 3 S 1161	10781143																					0.30	-0.60	3.50	7.80	3.55	1.77	3.55	0.24	1.77	4.05 MINI	5	1.50	9	
211 CL 3 S 2160	10756743	1 TO 2.5	3.70	8.20	2.85	0.77	2.85	0.36	1.50	0.00	-0.80	4.40	8.60	3.85	1.42	0.77	1.00	3.85	0.30	2.31															
211 CL 3 S 2161	10793682																					0.00	-1.10	4.00	8.00	4.10	2.05	4.10	0.27	2.05					



ECN-NO. NUMERO ECN		POSITION POSITION		CHANGE DESCRIPTION MODIFICATION	
PRODUCT SPEC. SPECIF. PRODUIT		PACKAGING SPEC. SPECIF. EMBALLAGE		APPLICATION SPEC. SPECIF. APPLICATION	
TOLERANCES TOLERANCES		MATERIAL : MATIERE :		SURFACE FINISH ETAT DE SURFACE	
COUNTERPART No. CONTRE-PARTIE N°		COLOUR : COULEUR :		DELPHI P/N ADDED	
DO NOT MEASURE DRAWING NE PAS PRENDRE DE COTES		ECON. Loc. Code CODE B.E.		FE	
CREATED BY CREE PAR		DATE DATE		NAME NOM	
MODIFIED BY MODIF. PAR		DATE DATE		NAME NOM	
CHECKED BY VERIF. PAR		DATE DATE		NAME NOM	
APPROVED BY APPR. PAR		DATE DATE		NAME NOM	
FILE NAME NOM DE FICHIER		PCC0801503		28 X 0.8 MALE TERMINAL	
TOLERANCES TOLERANCES		± 0.2 ± 2*		MATERIAL : MATIERE : SEE TABLE	
COUNTERPART No. CONTRE-PARTIE N°		COLOUR : COULEUR :		SURFACE FINISH ETAT DE SURFACE	
DO NOT MEASURE DRAWING NE PAS PRENDRE DE COTES		ECON. Loc. Code CODE B.E.		FE	
CREATED BY CREE PAR		DATE DATE		NAME NOM	
MODIFIED BY MODIF. PAR		DATE DATE		NAME NOM	
CHECKED BY VERIF. PAR		DATE DATE		NAME NOM	
APPROVED BY APPR. PAR		DATE DATE		NAME NOM	
FILE NAME NOM DE FICHIER		PCC0801503		28 X 0.8 MALE TERMINAL	
TOLERANCES TOLERANCES		± 0.2 ± 2*		MATERIAL : MATIERE : SEE TABLE	
COUNTERPART No. CONTRE-PARTIE N°		COLOUR : COULEUR :		SURFACE FINISH ETAT DE SURFACE	
DO NOT MEASURE DRAWING NE PAS PRENDRE DE COTES		ECON. Loc. Code CODE B.E.		FE	
CREATED BY CREE PAR		DATE DATE		NAME NOM	
MODIFIED BY MODIF. PAR		DATE DATE		NAME NOM	
CHECKED BY VERIF. PAR		DATE DATE		NAME NOM	
APPROVED BY APPR. PAR		DATE DATE		NAME NOM	
FILE NAME NOM DE FICHIER		PCC0801503		28 X 0.8 MALE TERMINAL	
TOLERANCES TOLERANCES		± 0.2 ± 2*		MATERIAL : MATIERE : SEE TABLE	
COUNTERPART No. CONTRE-PARTIE N°		COLOUR : COULEUR :		SURFACE FINISH ETAT DE SURFACE	
DO NOT MEASURE DRAWING NE PAS PRENDRE DE COTES		ECON. Loc. Code CODE B.E.		FE	
CREATED BY CREE PAR		DATE DATE		NAME NOM	
MODIFIED BY MODIF. PAR		DATE DATE		NAME NOM	
CHECKED BY VERIF. PAR		DATE DATE		NAME NOM	
APPROVED BY APPR. PAR		DATE DATE		NAME NOM	
FILE NAME NOM DE FICHIER		PCC0801503		28 X 0.8 MALE TERMINAL	

EUR C04 112 F29 PDS

DELPHI
DELPHI PACKARD ELECTRICAL/ELECTRONIC ARCHITECTURE
EPERNON, FRANCE

C ISO PROJECTION PROJECTION ISO

DIMENSION IN MILLIMETERS DIMENSIONS EN MILLIMETRES

pro / eng. A2

DWG SIZE FORMAT

REV. IND. 2 of 1 ser 3

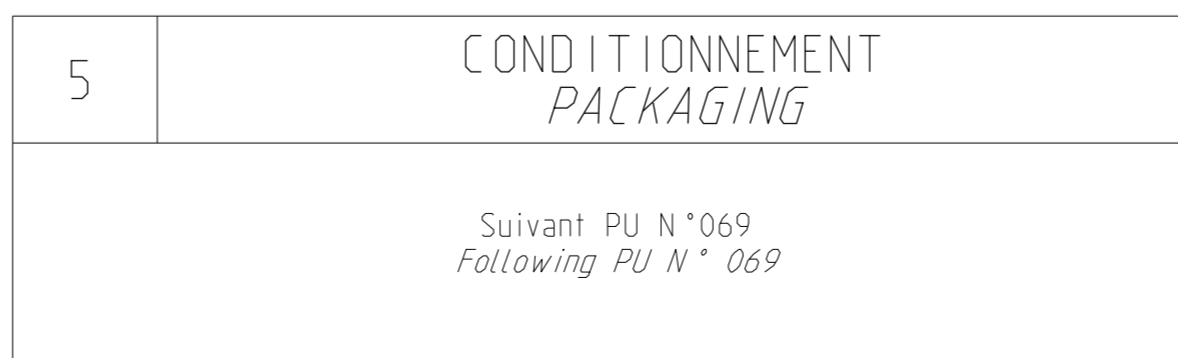
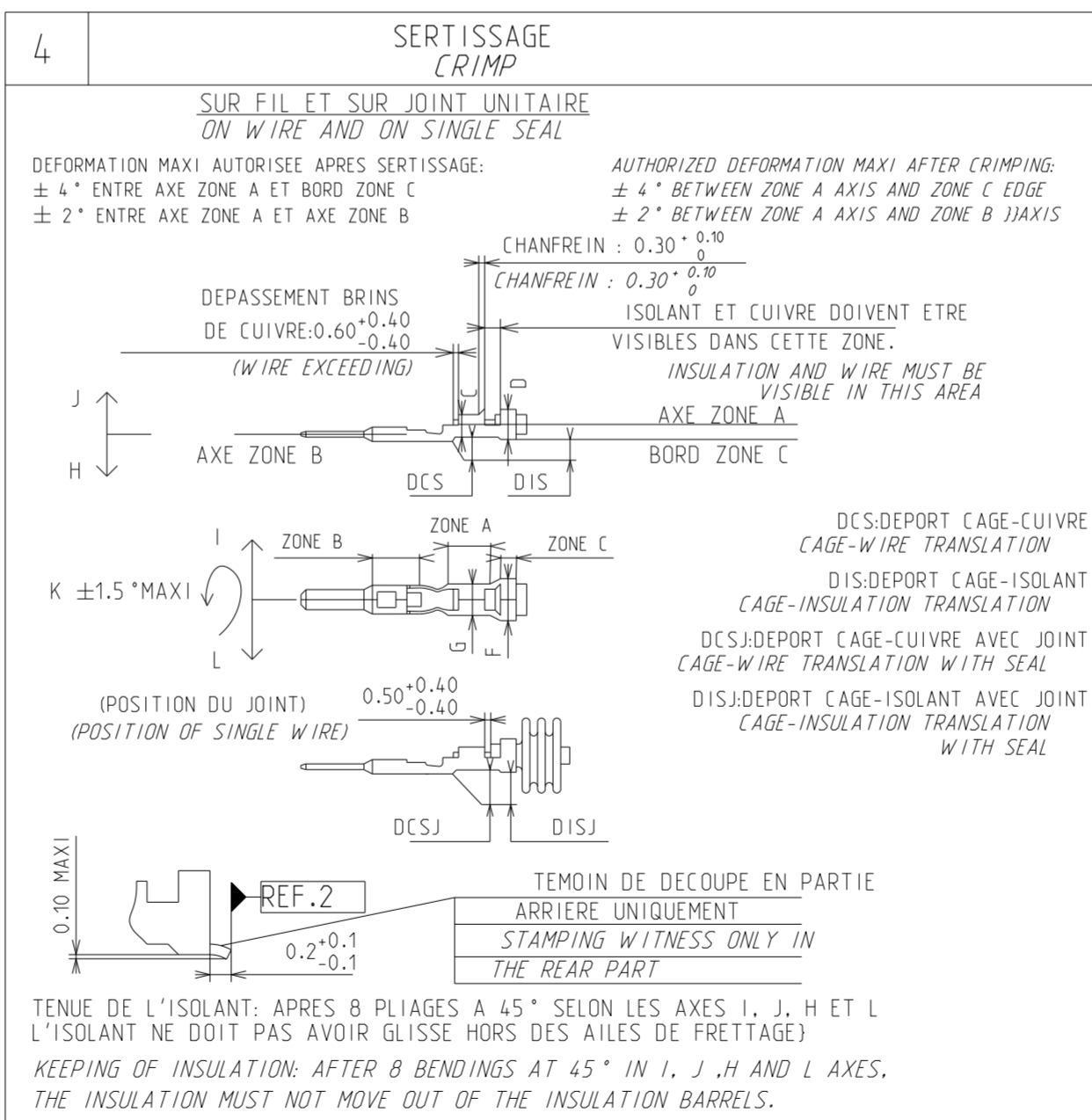
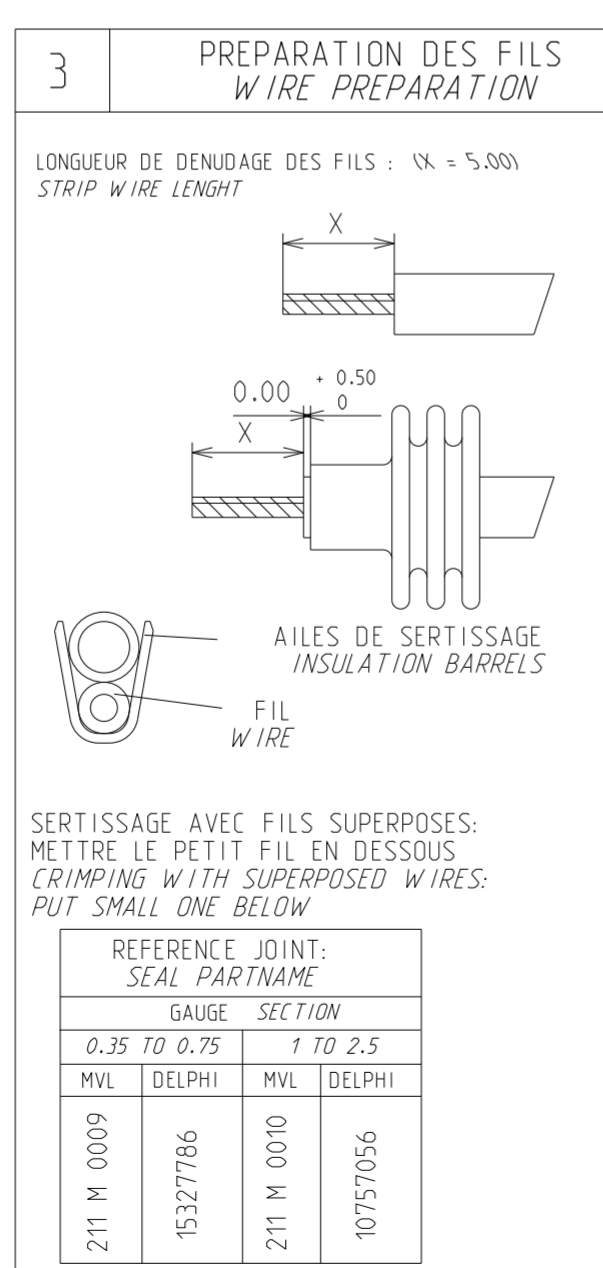
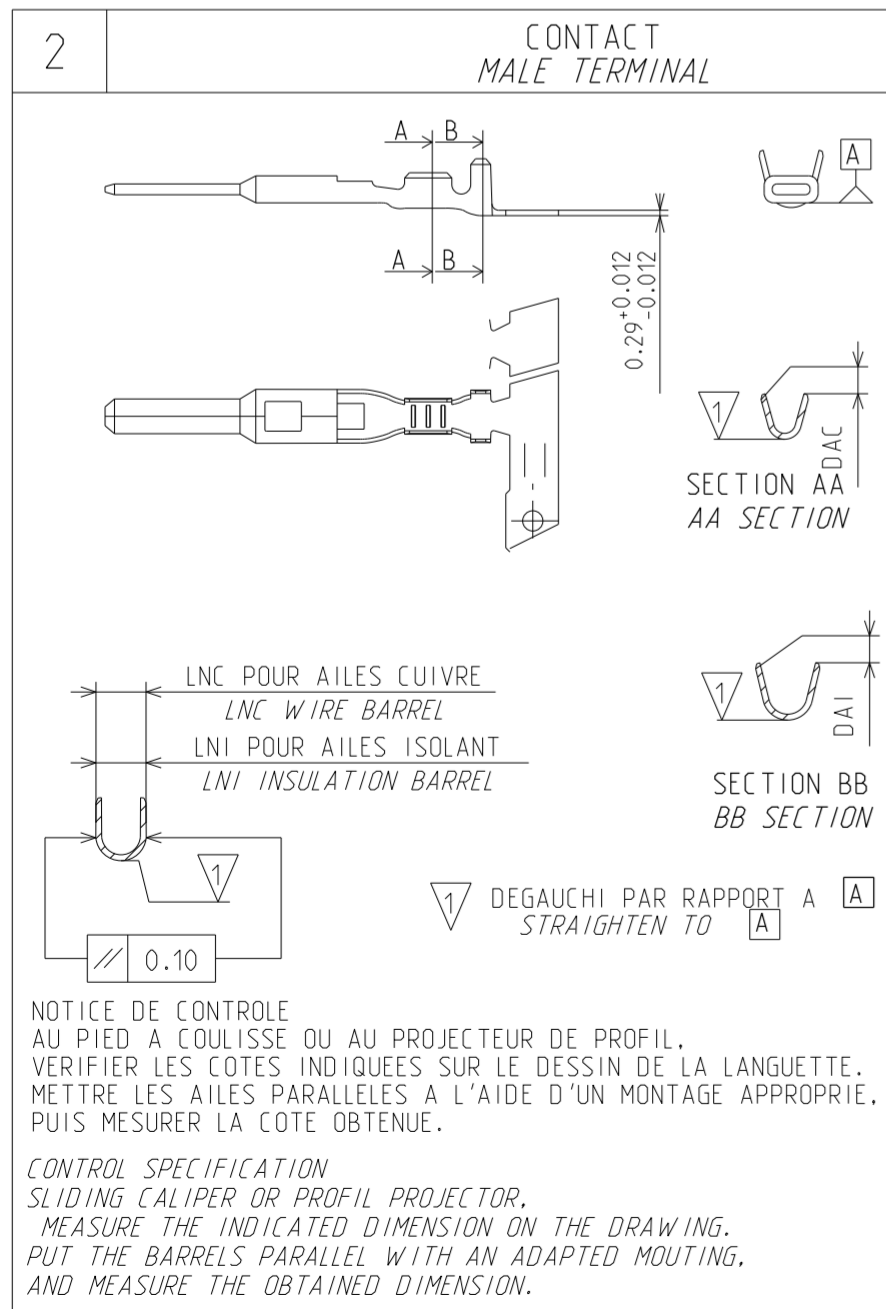
SHEET FEUILLE

SCALE Ech. 1:1

PARAMETRES DE SERTISSAGE CRIMP PARAMETERS																					
CONTACT MALE TERMINAL				SERTISSAGE CUIVRE WIRE BARREL				FRETTAGE ISOLANT INSULATION BARREL													
GAUGE SECTION	REFERENCE F.C.C. F.C.C. PARTNAME		REFERENCE PSA PARTNAME	DAC MAXI DAI MAXI	LNC n 0.25 LNI n 0.25	DCS n 0.10 DIS n 0.10	DCSJ n 0.10 DISJ n 0.10	SECTION SECTION		PAR RECOUVREMENT WITH OVERLAPPING		AVEC JOINT UNITAIRE WITH SINGLE SEAL		TYPE FIL WIRE							
	MVL	DELPHI						THEORIQUE THEORETIC	REELLE REAL	(LARGEUR) (WIDTH)	HAUTEUR HEIGHT	Ø EQU. Ø EQU.	(LARGEUR) (WIDTH)		(HAUTEUR) (HEIGHT)	(LARGEUR) (WIDTH)	(HAUTEUR) (HEIGHT)	IR ID			
0.35 TO 0.75	211 CL 3 S 1160	10779316		0.25	0.25	2.4	3.4	0.30	- 0.30	0.30	- 0.60	0.35	0.34	(2.10)	0.90	1.35	(2.57)	(2.02)	(3.28)	(3.09)	
												0.50	0.49	(2.11)	0.97	1.45	(2.58)	(2.05)	(3.31)	(3.13)	
												0.60	0.59	(2.12)	1.01	1.80	(2.59)	(2.20)			
												0.75	0.72	(2.13)	1.07	1.70	(2.58)	(2.15)	(3.37)	(3.24)	
	211 CL 3 S 1161	10781143		0.25	0.25	2.4	3.4	0.30	- 0.30	0.30	- 0.60	0.35 + 0.35	0.68	(2.13)	1.05	2.03	(2.59)	(2.31)			
												1.00	0.93	(2.83)	1.31	2.00	(3.89)	(2.58)			IR
												1.40	1.33	(2.85)	1.42	1.85	(3.89)	(2.49)	(3.82)	(3.22)	ID
												1.50	1.53	(2.87)	1.47	2.20	(3.90)	(2.72)	(3.91)	(3.58)	
1 TO 2.5	211 CL 3 S 2160	10756743		0.25	0.25	2.4	3.4	0.00	- 0.80	0.00	- 1.10	2.00	1.82	(2.88)	1.55	2.60	(3.91)	(3.05)			
												2.50	2.61	(2.93)	1.77	2.80	(3.92)	(3.23)			ID
												0.35 + 0.60	0.93	(2.83)	1.31	2.39	(3.90)	(2.87)			
												0.35 + 1	1.27	(2.85)	1.40	2.56	(3.91)	(3.01)			IR
	211 CL 3 S 2161	10793682		0.25	0.25	2.4	3.4	0.00	- 0.80	0.00	- 1.10	0.50 + 0.50	0.98	(2.83)	1.32	2.19	(3.90)	(2.71)			
												0.50 + 1.50	2.02	(2.90)	1.61	2.79	(3.92)	(3.22)			ID
												0.60 + 0.60	1.18	(2.85)	1.38	2.71	(3.92)	(3.14)			
												0.60 + 1	1.52	(2.87)	1.47	2.87	(3.92)	(3.29)			
	211 CL 3 S 2161	10793682		0.25	0.25	2.4	3.4	0.00	- 0.80	0.00	- 1.10	0.60 + 1.40	1.92	(2.89)	1.58	3.10	(3.94)	(3.53)			
												1 + 1	1.86	(2.89)	1.56	3.02	(3.93)	(3.44)			IR
																2.79	(3.92)	(3.22)			ID

(VALEUR): UNIQUEMENT POUR INFORMATION

(VALUE) : FOR INFORMATION ONLY



ECN-NO. NUMERO ECH	POSITION POSITION	CHANGE DESCRIPTION MODIFICATION	DELPHI P/N ADDED	
PRODUCT SPEC. SPECIF. PRODUIT	PACKAGING SPEC. SPECIF. EMBALLAGE	APPLICATION SPEC. SPECIF. APPLICATION	COPYRIGHT DELPHI CORPORATION AND/OR ITS AFFILIATES. ALL RIGHTS RESERVED. REVISED THIS DRAWING IS THE PROPERTY OF DELPHI CORPORATION AND CONTAINS DELPHI CONFIDENTIAL INFORMATION. THE REPRODUCTION, DISTRIBUTION AND UTILIZATION OF THIS DOCUMENT OR ITS RELATED CAD DATA, AS WELL AS COMMUNICATION OF ANY CONTENT TO OTHERS, WITHOUT EXPRESS AUTHORIZATION, IS PROHIBITED.	
TOLERANCES TOLERANCES	± 0.2 ± 2*	MATERIAL : MATIERE :	SEE TABLE	SURFACE FINISH ETAT DE SURFACE
COUNTERPART N° CONTRE-PARTIE N°	DO NOT MEASURE DRAWING NE PAS PRENDRE DE COTES	DATE DATE	NAME NOM	TITLE DESIGNATION
CREATED BY CREE PAR	2013/07/24	FF	28 X 0.8 MALE TERMINAL	
MODIFIED BY MODIF. PAR	2013/07/01	FF	PROJECT	
CHECKED BY VERIF. PAR	2013/07/02	L DOMERGUE	SICMA 3	
APPROVED BY APPR. PAR	2013/07/02	Patrice CAPPE	ESR NO. NUMERO ESR	FRA-0332
FILE NAME NOM DE FICHIER	PCC0801503	DOCUMENT UNDER PDS CONTROL DOCUMENT GERE SOUS P.D.S.		NO MODIFICATION ALLOWED OUTSIDE PAS DE MODIFICATION EN DEHORS
DRAWING NUMBER REF. PLAN		PCC0801503		REV. IND.
STATE ETAT		SERIAL RELEASED		REV. IND.
PART NUMBER REF. ARTICLE		See Table		REV. IND.
SCALE ECH.		1:1		REV. IND.

X-ON Electronics

Largest Supplier of Electrical and Electronic Components

Click to view similar products for [Automotive Connectors](#) category:

Click to view products by [APTIV](#) manufacturer:

Other Similar products are found below :

[003-018-000](#) [60403001](#) [60993906-B](#) [629515004020001](#) [M902-2131](#) [M902-2161](#) [72.330.1035.1](#) [73.353.4028.0](#) [F119300-B](#) [F166900](#)
[F258300-B](#) [F358300-B](#) [F407400](#) [F444110](#) [F487000](#) [F509500B-B](#) [827153-1](#) [8N1515-32-24P](#) [9-1326729-8](#) [925474-1](#) [928905-1](#) [964562-4](#)
[968782-1](#) [GT17SA-8DS-HU](#) [98891-1012](#) [98947-1016](#) [12004475-L](#) [12010290](#) [12010309-B](#) [12015454](#) [12020219-B](#) [12020308](#) [12041318-B](#)
[12052225-L](#) [12052466](#) [12059125](#) [12064869](#) [12004327-B](#) [12010503-B](#) [12015308](#) [12015384](#) [12015909](#) [1-21030-1](#) [12041254](#) [12041318](#)
[12047946-B](#) [12047957](#) [12047957-L](#) [12059473](#) [12066261](#)