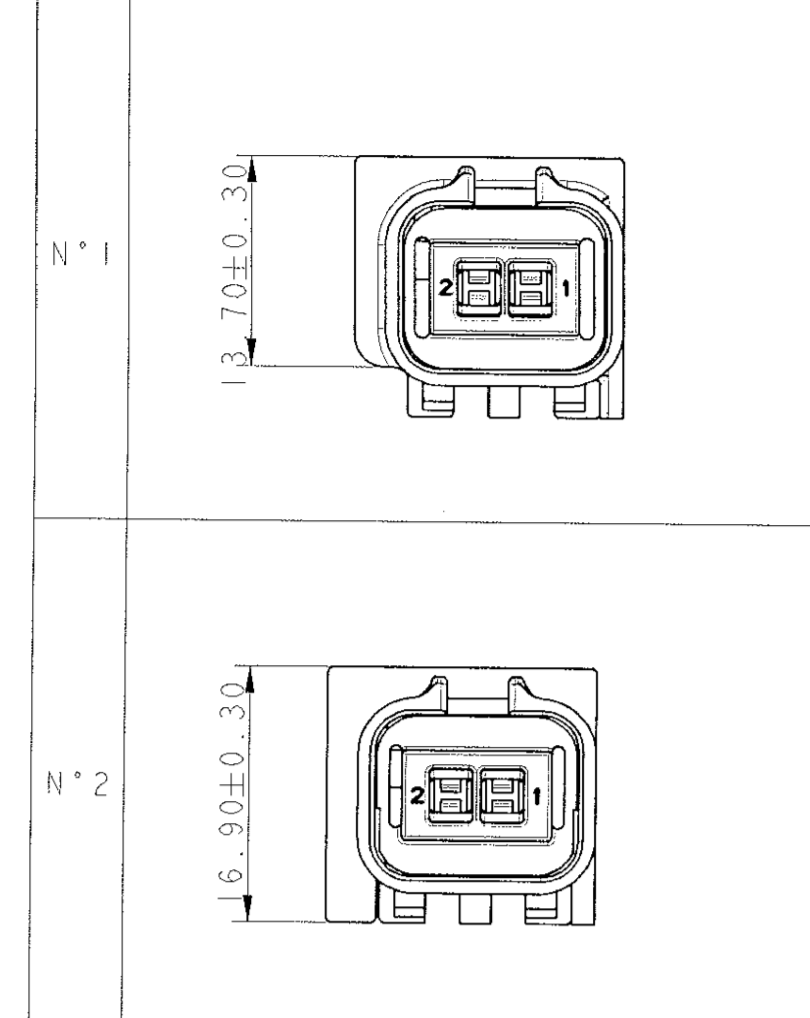


DWG STATUS					REVISION HISTORY				AUTH	DR	APVD1	APVD2
DATE	STG	REV	N/P	CHG								
25AP05	R	01	-	-	INITIAL DRAWING RELEASE				-	LPA	DPL	JPO
11AP07	R	02	-	-	13642521 - RELEASED				-	DPL	LPA	RDE

DEUX DEFINITIONS POSSIBLES



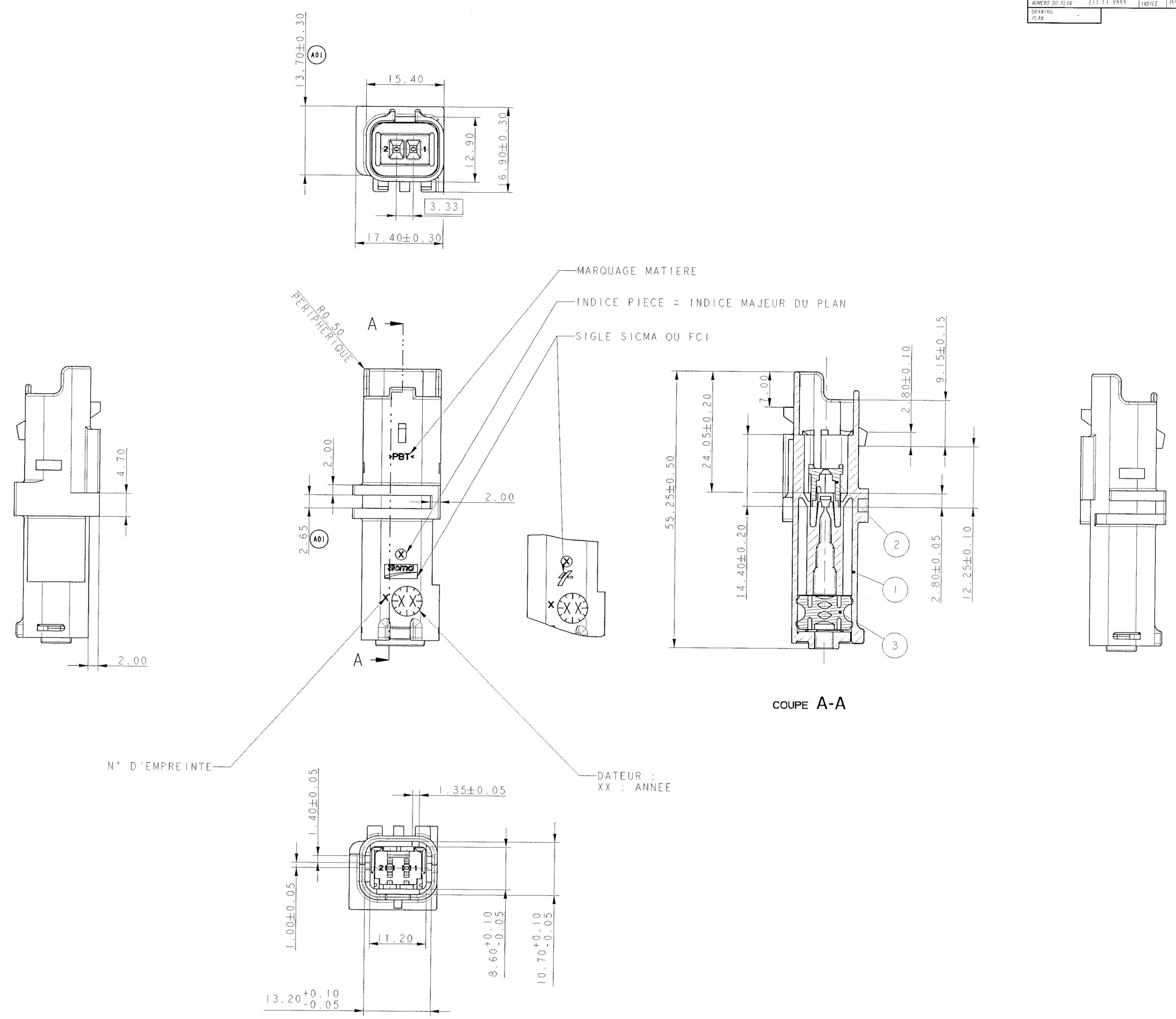
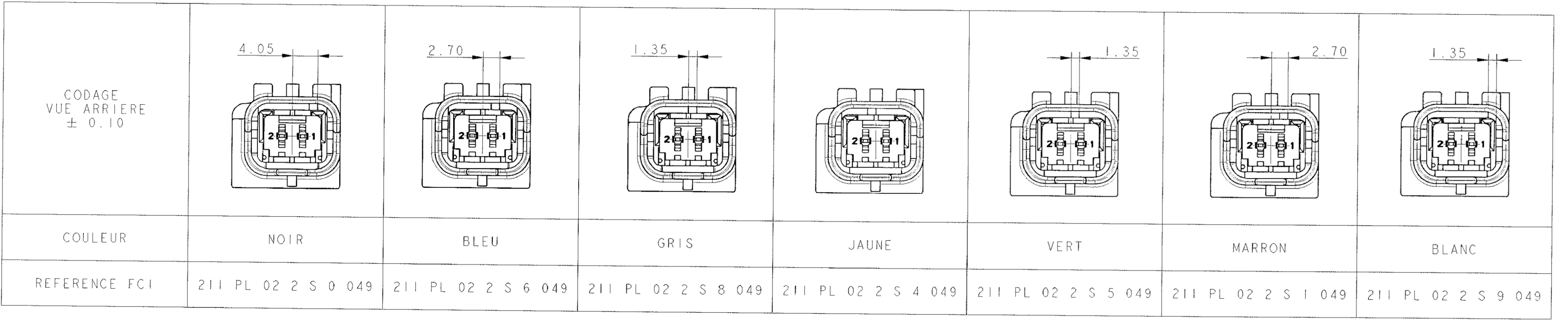
N°	BOUCHON	210 A 01 5 019	PBT NON CHARGE	VERT
1	ISOLANT PORTE-LANGUETTES	211 1 1 042	PBT NON CHARGE	MARRON
		211 1 5 042		VERT
		211 1 4 042		JAUNE
		211 1 8 042		GRIS
		211 1 6 042		BLEU
		211 1 0 042		NOIR
2	GRILLE	211 M 4 023	PBT 15% FV	JAUNE
		211 M 108	SILICONE AUTO-LUBRIFIE	VERT
N°	DESIGNATION	REFERENCE FCI	MATIERE	COULEUR

N°	CONTACT	TYPE	GAMME	REVETEMENT	MATIERE
211 CL 2 S 2120	1.5x0.8	2		SnPb	CuSn0.1
211 CL 2 S 1230	1.5x0.8	1		Au 1.27µm	CuSn0.1
211 CL 2 S 1120	1.5x0.8	1		SnPb	CuSn0.1

CONNECTEUR T 111 B2 B21 7050  
 ALVEOLE SUIVANT STE 96 288 230 99  
 POSITION ALVEOLE SUIVANT STE 96 339 622 99  
 ACCROCHAGE SELON STE 96 153 261 99  
 CONDITIONNEMENT SUIVANT NORME E 73.03.150.G

MASSE PRODUIT LIVRABLE = 7g (ISOLANT+GRILLE+GROMMET)  
 DIAMETRE DE FILS MINI : 1.40  
 MAXI : 2.80

CHARNIERE DE PLAQUETTE ARRIERE ABSENTE OU CASSEE ADMISE  
 PARTICULES DE SILICONE DNAS LE GROMMET, BOUCHANT PARTIELLEMENT  
 UN ORIFICE, ADMISES



ARCHIVE LE 23/09/2003

NO	DATE	REV	DESCRIPTION
A 03 039	22/09/03	A01	REDUCTION ON GROOVE SHAPE AREA

REVISIONS

NO	DATE	REV	DESCRIPTION
1			
2			
3			

APPROVED BY: [Signature]

DATE: 22/09/03

SCALE: 1:1

PROJECT: ANONYMOUS GREEN MATTE SEAL 2-WAY MALE CONNECTOR

DATE: 21/11/04

SCALE: 1:1

- MATING DELPHI PARTS OR RELATED DRAWINGS:
- 10738196 (FCI 211CL2S1120)
  - 10763712 (FCI 211CL2S1230)
  - 10738197 (FCI 211CL2S2120)
  - 15342610 (FCI 210A015019)

PART NO	REV	N/P	GLOBAL STATUS	SUP PN	SUP REV
13642521	01	AA	ACTIVE	211PL022S9049	A01
10889967	01	AA	ACTIVE	211PL022S8049	A01
10847162	01	AA	ACTIVE	211PL022S1049	A01
10846261	01	AA	ACTIVE	211PL022S4049	A01
10812039	01	AA	ACTIVE	211PL022S5049	A01
10787262	01	AA	ACTIVE	211PL022S0049	A01
10768567	01	AA	ACTIVE	211PL022S6049	A01

**DELPHI**  
 DELPHI PACKARD ELECTRIC SYSTEMS - POLAND 30 - 399 KRAKOW

THIS DRAWING IS THE PROPERTY OF DELPHI CORPORATION  
 NO RIGHTS ARE GRANTED TO USE THIS DRAWING FOR ANY PURPOSE  
 OTHER THAN THE FURNISHING OF SERVICES AND SUPPLIES TO  
 DELPHI CORPORATION

DR	DATE
D.PLONKA	11AP07
L.PABIASZ	11AP07
R.DEKA	11AP07

DATE: 11/11/04

SCALE: 1:1

PROJECT: ANONYMOUS GREEN MATTE SEAL 2-WAY MALE CONNECTOR

DATE: 21/11/04

SCALE: 1:1

SEE DRAWING

ASM CONN 2 M 1.5 SICMA-2 SLD

10858548

1 OF 1

## X-ON Electronics

Largest Supplier of Electrical and Electronic Components

*Click to view similar products for [Automotive Connectors](#) category:*

*Click to view products by [APTIV](#) manufacturer:*

Other Similar products are found below :

[003-018-000](#) [60403001](#) [60993906-B](#) [629515004020001](#) [M902-2131](#) [M902-2161](#) [72.330.1035.1](#) [73.353.4028.0](#) [F119300-B](#) [F166900](#)  
[F258300-B](#) [F358300-B](#) [F407400](#) [F444110](#) [F487000](#) [F509500B-B](#) [827153-1](#) [8N1515-32-24P](#) [9-1326729-8](#) [925474-1](#) [928905-1](#) [964562-4](#)  
[968782-1](#) [GT17SA-8DS-HU](#) [98891-1012](#) [98947-1016](#) [12004475-L](#) [12010290](#) [12010309-B](#) [12015454](#) [12020219-B](#) [12020308](#) [12041318-B](#)  
[12052225-L](#) [12052466](#) [12059125](#) [12064869](#) [12004327-B](#) [12010503-B](#) [12015308](#) [12015384](#) [12015909](#) [1-21030-1](#) [12041254](#) [12041318](#)  
[12047946-B](#) [12047957](#) [12047957-L](#) [12059473](#) [12066261](#)