

HV RCS 800 & 890 DIRECT MATE

RCS 890
Direct Mate
2 Way



RCS 800
Direct Mate
2 Way

BENEFITS

- Cost effective solution with unshielded terminal holder within device replacing traditional shielded headers
- Unique and safe mating screwing with innovative Screw Position Assurance (SPA)
- Multiple configurations: RCS 800 (1W straight unshielded); RCS 800 (2W straight shielded); RCS 890 (2W right angle shielded)

FEATURES

- Robust bolt driven mate assist
- Fingersafe via plastic tips on male pins
- Cable range: ~ 50 mm² and smaller



AVAILABLE CONFIGURATIONS

Connector Type	Wire-to-device
Cable Exit Orientation	90°, 180°
Cable Range (mm ²)	35 - 50
Terminal Type	Round 8 mm
# of Power Terminals	2
Shielding	Individual
HVIL	Shunt on female
Assembly Assurance	SPA (Screwed Position Assurance)
Number of Indexes	2 on 890 1 on 800



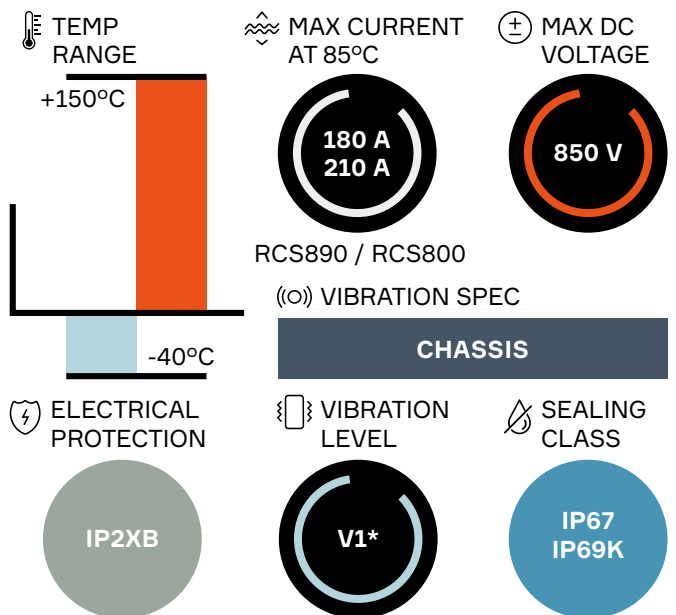
APPLICATIONS

Inverter, battery, junction box, and power electric box

See back page for representative part numbers and packaging dimensions.



TECHNICAL CHARACTERISTICS

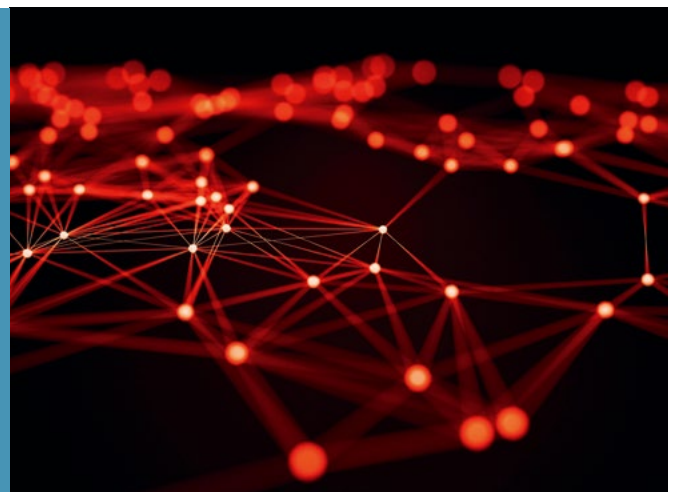


* For classification V2 please consult an Aptiv representative.

About Aptiv

Aptiv is a global technology company that develops safer, greener and more connected solutions enabling the future of mobility. Headquartered in Dublin, Aptiv has approximately 150,000 employees and operates 14 technical centers, as well as manufacturing sites and customer support centers in 45 countries.

Visit aptiv.com



Part number	HVIL	Gender	Terminal size (mm)	Wire range	Exit orientation	Mating part number
RCS 890 Direct Mate						
35084594	Yes	Male	8	Pre assembled pin	90°	35084575
35084575	No	Female	8	35 / 50	90°	35084594
RCS 800 Direct Mate						
35098453	No	Female	8	35	180°	35099885
35099885	No	Male	8	Pre assembled pin	180°	35098453
35099880*	Yes	Male	8	Without pin	180°	35098453

Please, refer to the High Voltage Catalogue for the full part number list.
 * Please contact your local Aptiv representative for serial production information.

ASSOCIATED PARTS

RCS 890 Direct Mate

Part number	Description
33502217	RCS 890 female terminal Ag 35 - 50 mm ²
35166051	RCS 890 female terminal Ag 70 mm ²
15549847	DSQ 1.5 female Ag 0.35 - 0.50 mm ²
15549848	DSQ 1.5 female Ag 0.75 - 1.00 mm ²
35082415	Outer ferule 35 mm ²
35234890	Outer ferule 50 - 70 mm ²
35084603	Recovery shield assembly 35 mm ²
35236787	Recovery shield assembly 50 - 70 mm ²
35084610	Cable seal device for 35 mm ²
35084586	Cable seal device for 50 mm ²
35236755	Cable seal device for 70 mm ²
15441379	DCS/DSQ 1.5 Male Red Single Wire Seal 0.22 - 0.5 mm ²
15441380	DCS/DSQ 1.5 Male Grey Single Wire Seal 0.75 - 1.0 mm ²

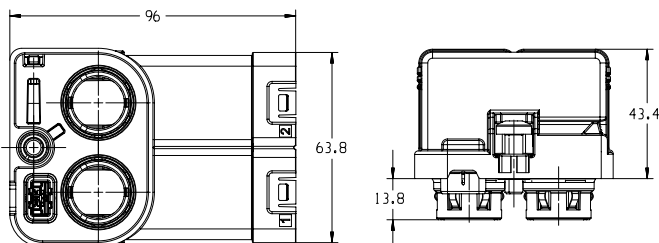
RCS 800 Direct Mate

Part number	Description
13893887	RCS 800 female terminal Ag 35 - 50 mm ²
15441379	DCS/DSQ 1.5 SWS 0.22 - 0.5 mm ²
15441380	DCS/DSQ 1.5 SWS 0.75 - 1.0 mm ²
15549847	DSQ 1.5 female Ag 0.35 - 0.50 mm ²
15549848	DSQ 1.5 female Ag 0.75 - 1.00 mm ²
35082415	Outer ferule 35 and 50 mm ²
35082410	Inner ferule 35 and 50 mm ²
35099247	Cable seal device for 35 mm ²
35099248***	Cable Seal device for 50 mm ²
35092416	RCS800 Tube 35 - 50 mm ²

*** Available only by prototype, please contact your local Aptiv representative for more information on serial production.

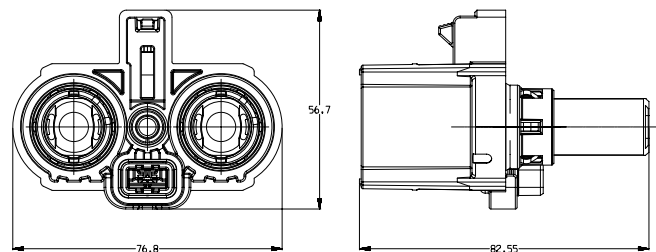
DIMENSION MEASUREMENT SAMPLE

RCS 890 Direct Mate



35084575

RCS 800 Direct Mate



35098453

Part numbers, specifications, dimensions and performance data in this document are for general references only and are subject to change without notice. To verify product information, please contact an Aptiv representative.

CS-SP91-HV-En0519

X-ON Electronics

Largest Supplier of Electrical and Electronic Components

Click to view similar products for [Automotive Connectors](#) category:

Click to view products by [APTIV](#) manufacturer:

Other Similar products are found below :

[003-018-000](#) [60403001](#) [60993906-B](#) [629515004020001](#) [M902-2131](#) [M902-2161](#) [72.330.1035.1](#) [73.353.4028.0](#) [F119300-B](#) [F166900](#)
[F258300-B](#) [F358300-B](#) [F407400](#) [F444110](#) [F487000](#) [F509500B-B](#) [827153-1](#) [8N1515-32-24P](#) [9-1326729-8](#) [925474-1](#) [928905-1](#) [964562-4](#)
[968782-1](#) [GT17SA-8DS-HU](#) [98891-1012](#) [98947-1016](#) [12004475-L](#) [12010290](#) [12010309-B](#) [12015454](#) [12020219-B](#) [12020308](#) [12041318-B](#)
[12052225-L](#) [12052466](#) [12059125](#) [12064869](#) [12004327-B](#) [12010503-B](#) [12015308](#) [12015384](#) [12015909](#) [1-21030-1](#) [12041254](#) [12041318](#)
[12047946-B](#) [12047957](#) [12047957-L](#) [12059473](#) [12066261](#)