

QUALITY CUSTOMER INTERFACE (QCI)

DIMENSIONS LISTED BELOW BY INSPECTION SYMBOL NUMBER MUST BE INCLUDED IN THE PROCESS CONTROL PLAN FOR THIS PART

INSPECTION SYMBOL	ZONE
1	J16
3	F14
4	F16
12	F10

KEY PRODUCT CHARACTERISTICS

NO & TYPE	DESCRIPTION	RATIONALE	PTS	ZONE
1	FF HIGH RIBS			J9
2	FF WIDTH RIBS			HB
3	FF HIGH RIBS			J13
4	FF WIDTH RIBS			HI1

SYMBOL DEFINITION

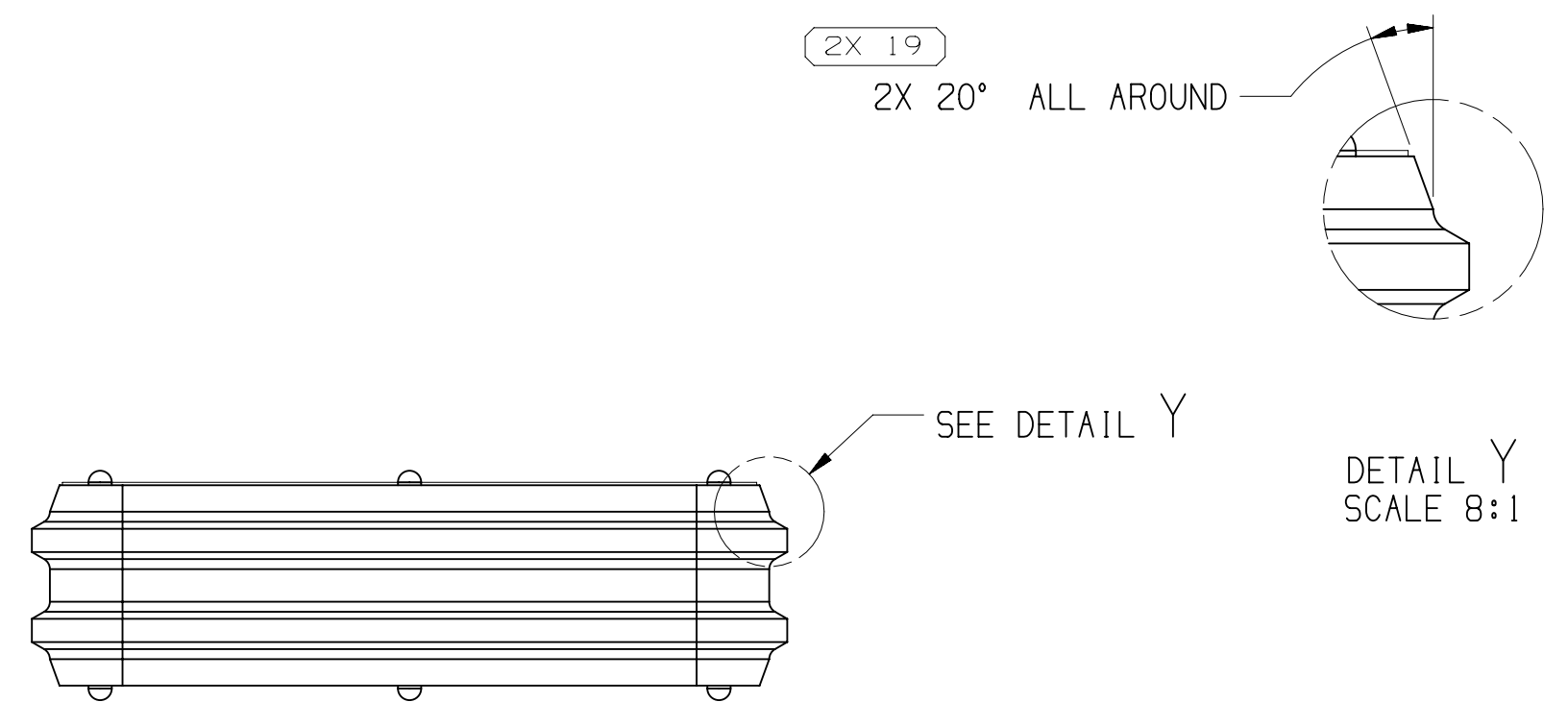
A DIMENSION WITHOUT AN INSPECTION REPORT SYMBOL DOES NOT REQUIRE INSPECTION. IT MAY BE CONTROLLED ON THE INDIVIDUAL COMPONENT DRAWING.

MISSING SYMBOLS

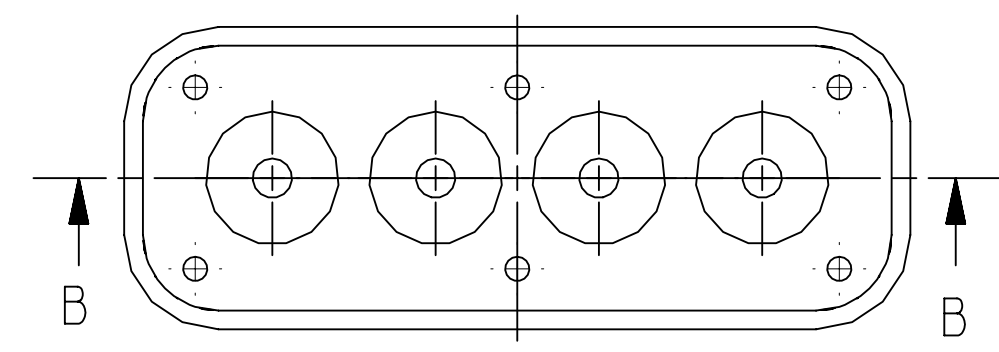
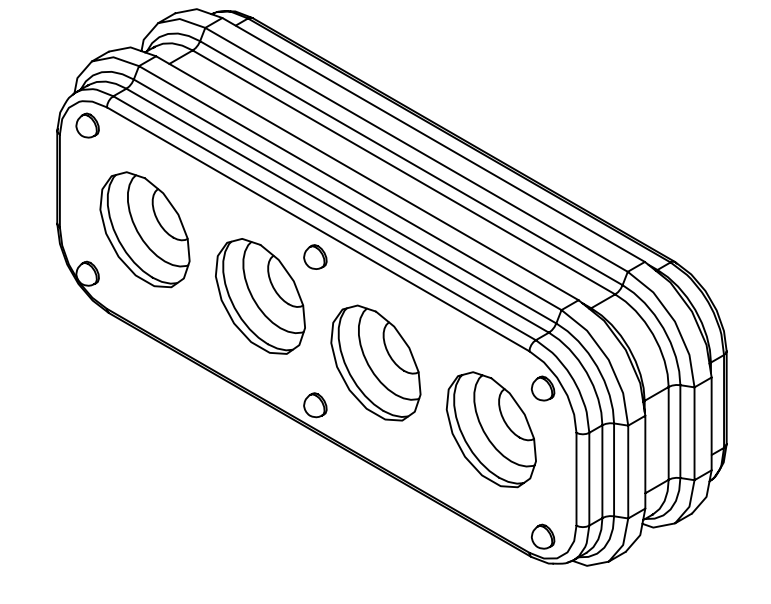
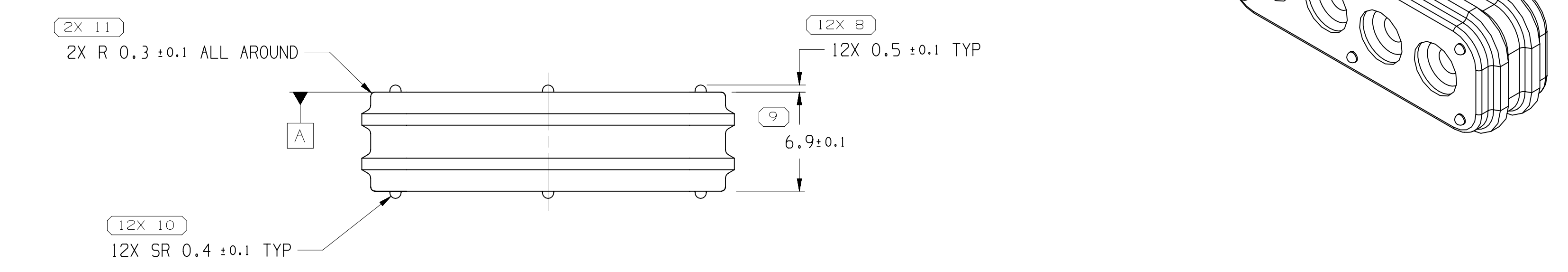
NO MISSING SYMBOL NUMBER

REVISION HISTORY

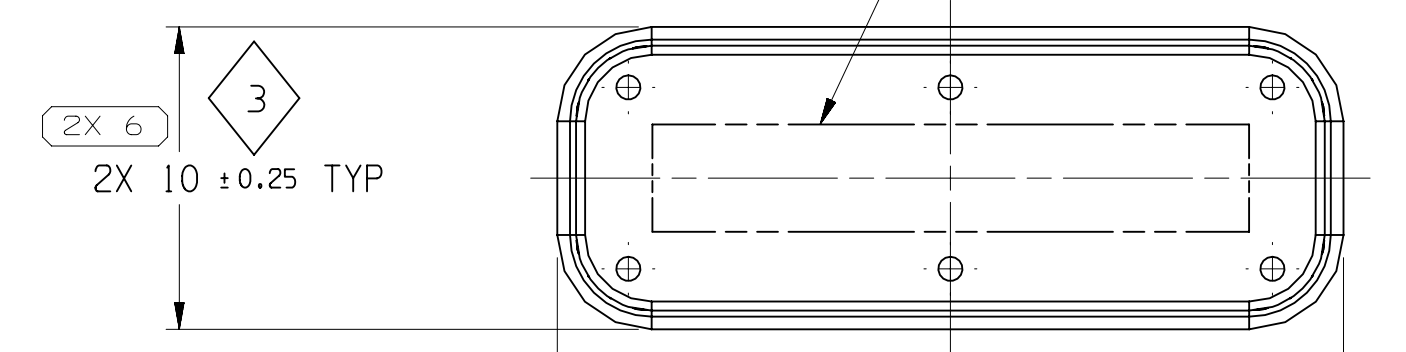
DATE	STG	REV	N/P	CHG	ZONE	REVISION HISTORY	AUTH	DR	APVD	APVD
09AU16	R	04	-	-	-	REDRAWN IN NX. 54200461 DPN 15537512 IS RESTORED. UPDATED P/N CHART	433835	NA	BV	LMV
01SE16	R	05	-	-	-	ALL PARTS - UPDATED TO LATES STANDARD: 15537512 - UPDATED PART AVAILABILITY, ADDED RESTRICTED USAGE COLUMN	434082	AHG	AHG	LMV
25OC17	R	06	-	-	-	ALL PARTS - PSD WAS DIM #17, DIM #10 WAS 12X SR 0.4 ± 0.25 TYP, DIM #11 WAS 2X R0.3 ± 0.25 ALL AROUND, DIM #13 WAS 6X R2.5 ± 0.1, DIM #15 WAS 24.76 ± 0.1, DIM #17 WAS 8.76 ± 0.1 & DIM #18 WAS 10 ± 0.2 AND ADDED WIRE INSULATION NOTE: 33185280 ADDED DIM #21: 33504637 - DIM #6 WAS 10 ± 0.25 & DIM #7 WAS 26 ± 0.25; 15537499 - REINSTATED	435253	CGD	CGD	LMV
28AN18	R	07	-	-	-	ALL PARTS - REVISED "WIRE INSULATION" NOTE	440186	AGC	AGC	LMV
20JL18	R	08	-	-	-	35234778 - RELEASED	440348	CGD	CGD	LMV



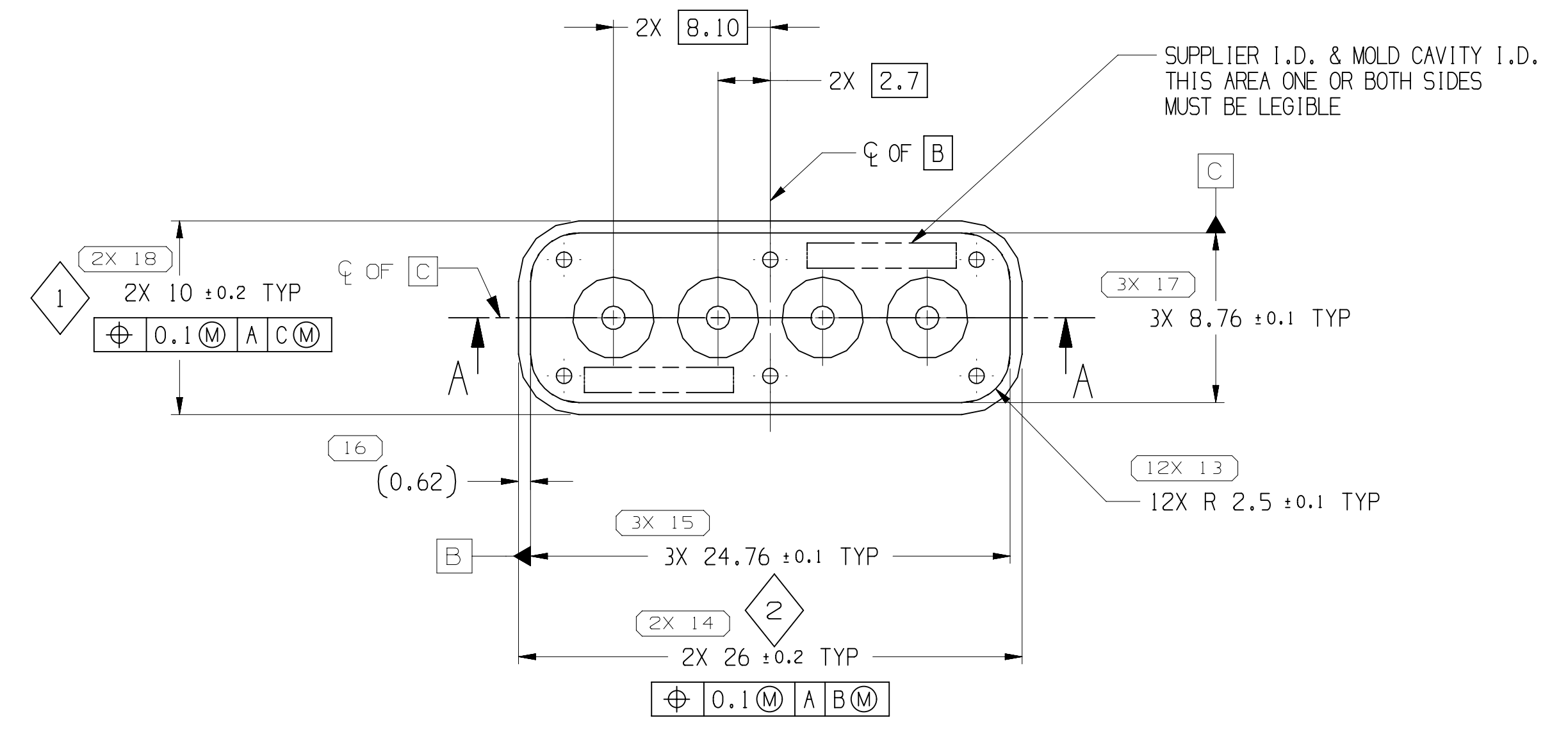
OPTIONAL CONSTRUCTION



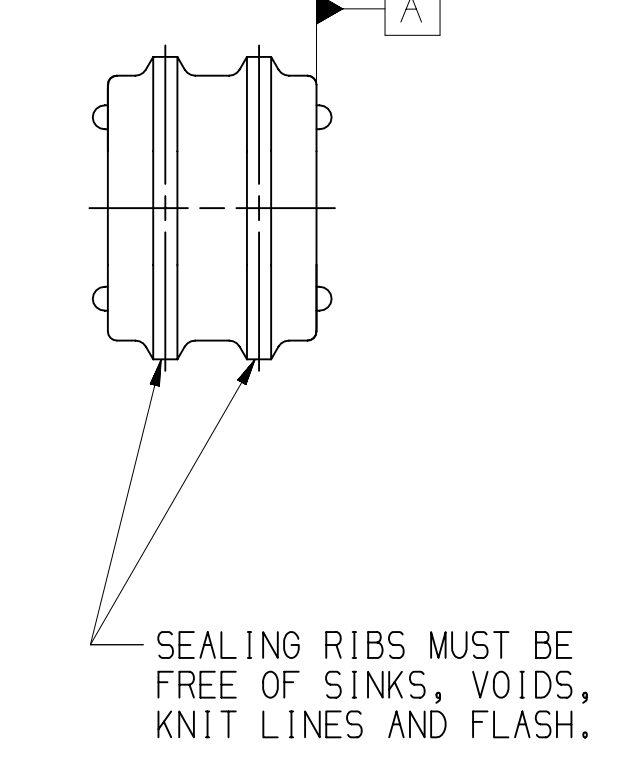
TYPE 102
SAME AS TYPE 101
EXCEPT AS SHOWN



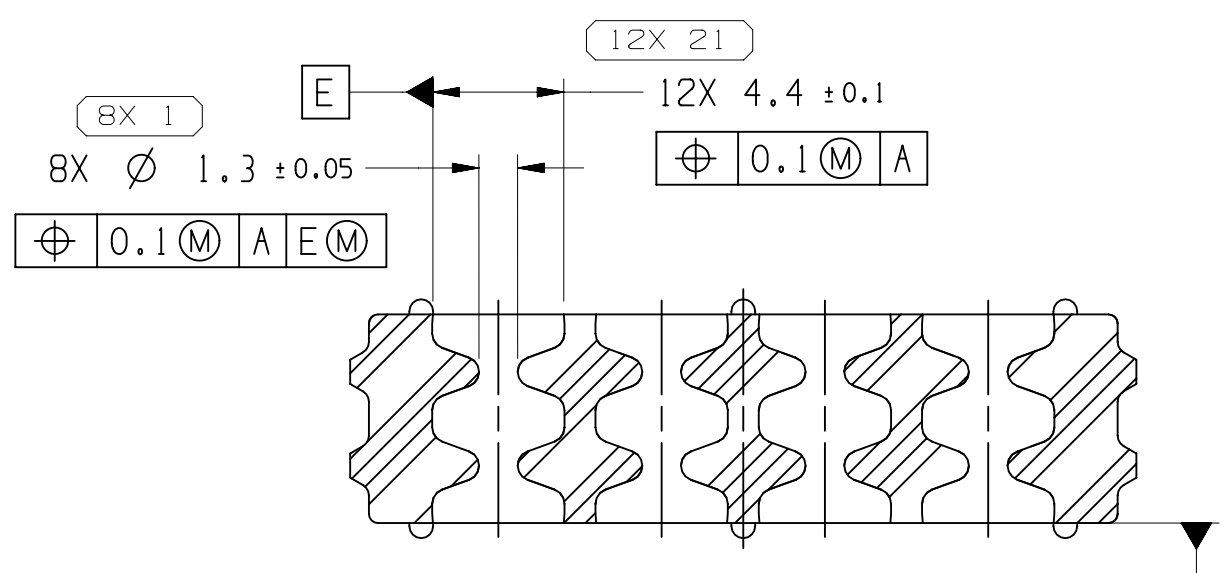
TYPE 104
SAME AS TYPE 101
EXCEPT AS SHOWN



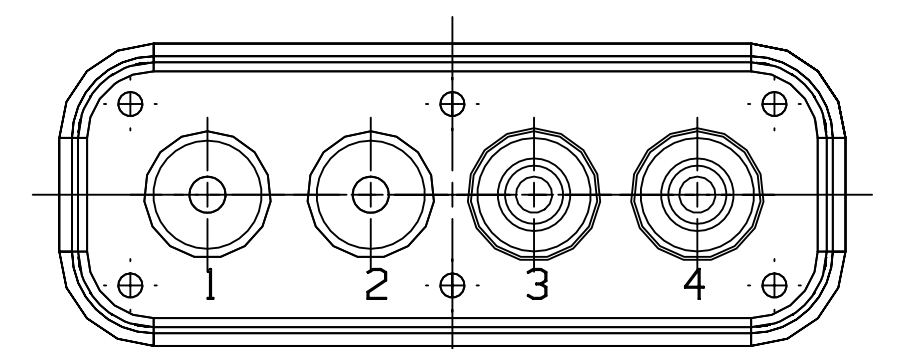
TYPE 101



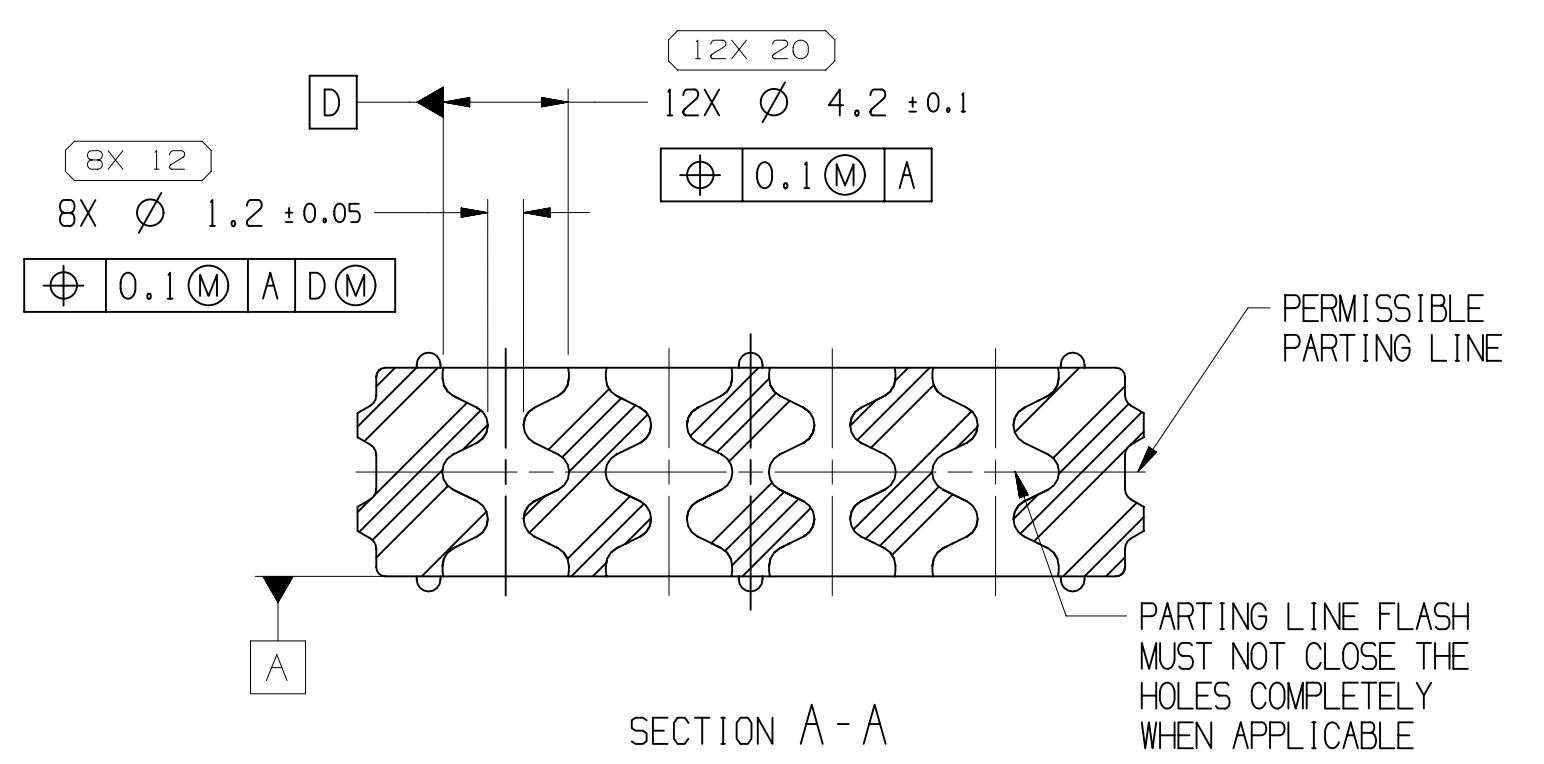
SEALING RIBS MUST BE FREE OF SINKS, VOIDS, KNIT LINES AND FLASH.



SECTION B-B

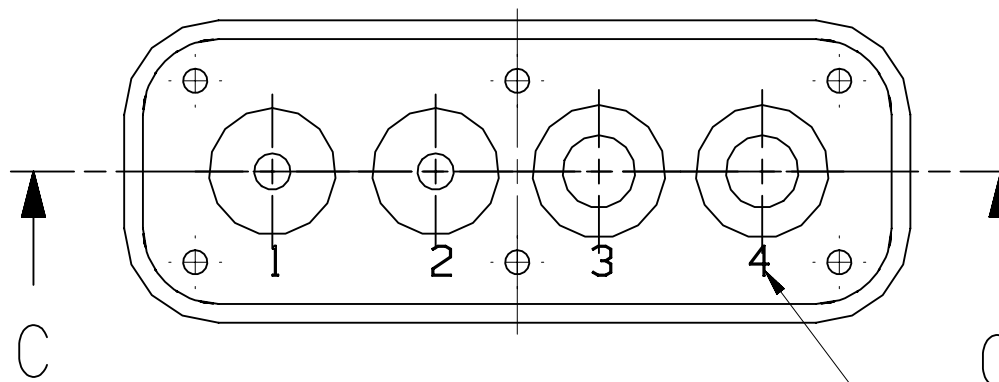


TYPE 105
SAME AS TYPE 101
EXCEPT AS SHOWN



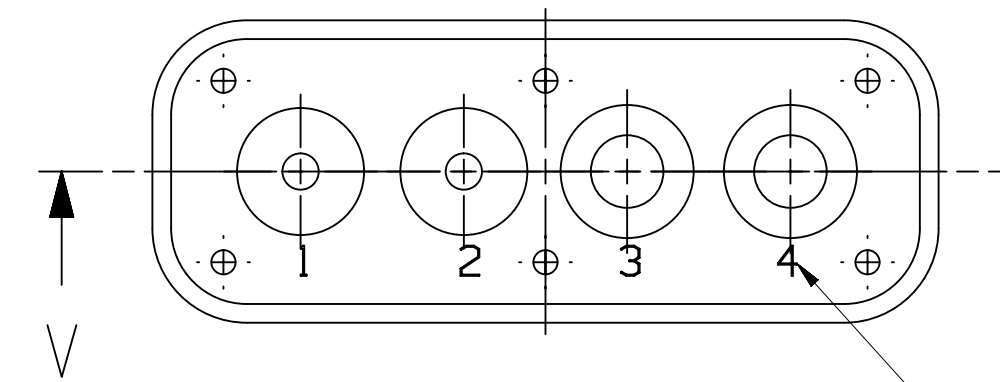
SECTION A-A

PERMISSIBLE PARTING LINE
PARTING LINE FLASH MUST NOT CLOSE THE HOLES COMPLETELY WHEN APPLICABLE



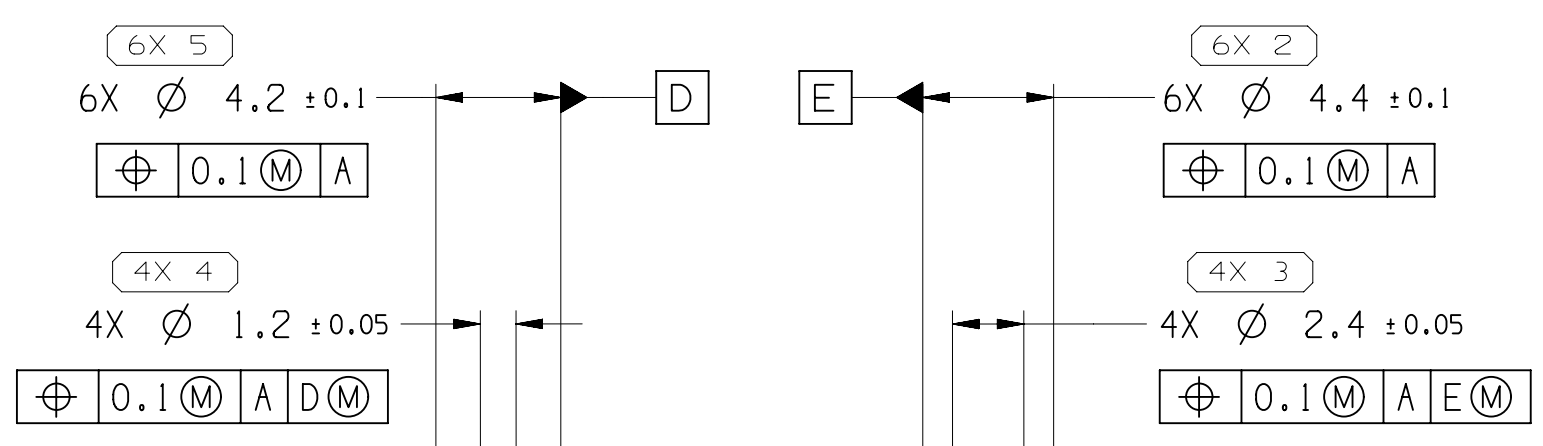
TYPE 103
SAME AS TYPE 101
EXCEPT AS SHOWN

CIRCUIT NO'S 1-4 LOCATION OPTIONAL MUST BE LEGIBLE

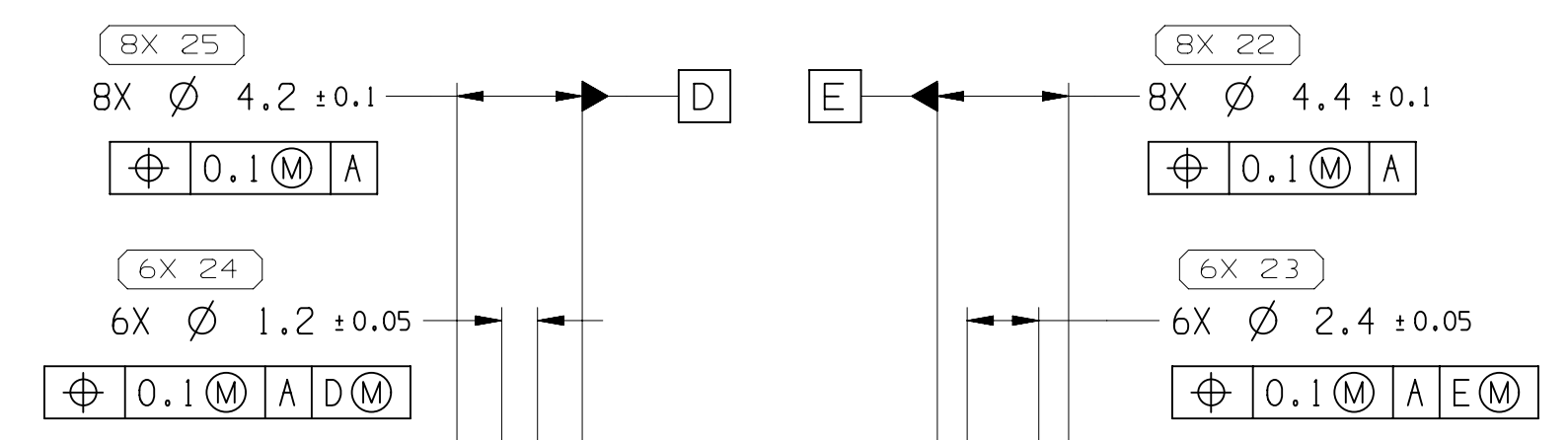


TYPE 106
SAME AS TYPE 103
EXCEPT AS SHOWN

CIRCUIT NO'S 1-4 LOCATION OPTIONAL MUST BE LEGIBLE



SECTION C-C



SECTION V-V

NOTES

- UNLESS OTHERWISE SPECIFIED AND/OR INDICATED:
DIMENSIONS ARE TO FACE OF VIEW SHOWN AND AUTOMATICALLY ROUNDED FOR COMPUTER FOR INSPECTION (SEE MATH MODEL FOR PRECISE DIMENSIONS). FOR ALL OTHER DIMENSIONS NOT SHOWN BUT REQUIRED FOR TOOL BUILD, SEE MATH MODEL FOR PRECISE TOOL PATH DATA.
- THIS PRODUCT IS NOT CATEGORIZED AS AN APPEARANCE ITEM, MINOR IMPERFECTIONS INCLUDING, BUT NOT LIMITED TO, FLOW MARKS, COLOR BLEMISHES, GATE VESTIGE, AND SOFT FLASH THAT DO NOT AFFECT THE FIT, FORM, OR FUNCTION OF THE PART ARE PERMISSIBLE PER EANP-4-3-CS-01-EN.
- PARTS SHOWN ON THIS DRAWING USED IN ASSEMBLIES SHOWN ON TAXI - DPN 15324795 & 15498846 / MVL PN H59003 & H59012
- REFERENCE MATING COMPONENTS OR EQUIVALENT:
TAXI CONNECTOR - DPN 15547329 & 33519332 / MVL PN C17002-MFG & C17001-MFG
- FLASH EXTENSION OF 0.025 THICK X 1.0 WIDE IS THE MAXIMUM PERMISSIBLE AND MUST NOT AFFECT FUNCTION OR FIT OF PART.
- MUST BE BAKED (POST CURED) FOR 5 HOURS AT 450° F TO DRIVE OFF VOLATILE MATERIALS. 450° F AIR TEMPERATURE MUST BE MAINTAINED EVERYWHERE IN IVEN WHILE FRESH AIR IS CONTINUOUSLY INTRODUCED SO AS EXHAUST AIR SATURATED WITH VOLATILES.
- WIRE INSULATIONS:
THIN WALL X-LINK 20AWG TO 10AWG (Ø 1.7 MIN TO Ø 4.09 MAX) OR EQUIVALENT METRIC WIRES AS CHARTED BELOW. SEE CONNECTOR ASSEMBLY FOR APPLICABLE WIRE SIZES.

DIMENSIONAL RANGE (MM)	TOLERANCE
FROM 0 TO >20	±0.15
>20 TO >30	±0.2
>30 TO >70	±0.3
>70 TO >100	±0.4
>100 TO >150	±0.5
>150 TO >200	±0.6
>200 TO >250	±0.7
>250 TO >300	±0.8
>300 TO >400	±1.0

PART NO	REV	PART NO	REV	N/P	TYPE	MAT'L SPEC AND COLOR	VOLUME CM ³	RESTRICTED USAGE	BAKING (SEE NOTE #6)	WIRE GAGE CIRCUITS NO	TEMP CLASS	
-	-	35234778	01	-	106	SILICONE METHYL/VINYL GREEN	1.338	-	YES	20/14	10/12	T3
54200428	M	15537499	01	AB	105	SILICONE METHYL/VINYL BLUE	1.347	-	NO	20/14 ANY LOCATION		T3
54200461	M	15537512	01	AC	103	SILICONE METHYL/VINYL RED	1.311	RESTRICTED	NO	20/14	10/12	T3
54200458	M	33504637	01	AB	104	SILICONE METHYL/VINYL YELLOW	1.554	-	NO	NO WIRES		T3
55200439	M	15537433	01	AC	101	SILICONE METHYL/VINYL BLUE	1.347	-	YES	20/14 ANY LOCATION		T4
C17019-U	M	33185280	01	AC	102	SILICONE METHYL/VINYL PURPLE	1.289	-	NO	20/10 ANY LOCATION		T3

APTIV
CONNECTION SYSTEMS
WARREN, OH
COPYRIGHT 2016 APTIV. ALL RIGHTS RESERVED.
THIS DRAWING IS THE PROPERTY OF APTIV AND CONTAINS APTIV CONFIDENTIAL INFORMATION. THE REPRODUCTION, DISTRIBUTION AND UTILIZATION OF THIS DOCUMENT OR ITS RELATED CAD DATA, AS WELL AS COMMUNICATION OF ANY CONTENT TO OTHERS, WITHOUT EXPRESS AUTHORIZATION, IS PROHIBITED.

DATE: 09AU16
DR: ANBUMANI
APVD: VINOTH
APVD3: LUCIA MELCHOR
APVD4: [Signature]

THIS DOCUMENT IS IN ACCORDANCE WITH ASME Y14.5M-1994 AS MODIFIED BY THE 2018 GLOBAL DIMENSIONING AND TOLERANCING ADDENDUM-2018. SEPARATE PATTERNING OF FEATURES MAY BE MADE SEPARATELY REGARDLESS OF DATUM REFERENCES.

ALL DIMENSIONS ARE IN MILLIMETERS

REFERENCE: C17019

THIRD ANGLE PROJECTION
DO NOT SCALE
USE MATH DATA

APTIV
CONNECTION SYSTEMS
WARREN, OH
COPYRIGHT 2016 APTIV. ALL RIGHTS RESERVED.
THIS DRAWING IS THE PROPERTY OF APTIV AND CONTAINS APTIV CONFIDENTIAL INFORMATION. THE REPRODUCTION, DISTRIBUTION AND UTILIZATION OF THIS DOCUMENT OR ITS RELATED CAD DATA, AS WELL AS COMMUNICATION OF ANY CONTENT TO OTHERS, WITHOUT EXPRESS AUTHORIZATION, IS PROHIBITED.

DATE: 09AU16
DR: ANBUMANI
APVD: VINOTH
APVD3: LUCIA MELCHOR
APVD4: [Signature]

THIS DOCUMENT IS IN ACCORDANCE WITH ASME Y14.5M-1994 AS MODIFIED BY THE 2018 GLOBAL DIMENSIONING AND TOLERANCING ADDENDUM-2018. SEPARATE PATTERNING OF FEATURES MAY BE MADE SEPARATELY REGARDLESS OF DATUM REFERENCES.

ALL DIMENSIONS ARE IN MILLIMETERS

REFERENCE: C17019

THIRD ANGLE PROJECTION
DO NOT SCALE
USE MATH DATA

DRAWING NUMBER: 33519337
SIZE: A0
SCALE: 4:1
FRAME NO: 1 OF 1
SHEET NO: 1 OF 1
STG: R
REV: 08

X-ON Electronics

Largest Supplier of Electrical and Electronic Components

Click to view similar products for [Automotive Connectors](#) category:

Click to view products by [APTIV](#) manufacturer:

Other Similar products are found below :

[003-018-000](#) [60403001](#) [60993906-B](#) [629515004020001](#) [M902-2131](#) [M902-2161](#) [72.330.1035.1](#) [73.353.4028.0](#) [F119300-B](#) [F166900](#)
[F258300-B](#) [F358300-B](#) [F407400](#) [F444110](#) [F487000](#) [F509500B-B](#) [827153-1](#) [8N1515-32-24P](#) [9-1326729-8](#) [925474-1](#) [928905-1](#) [964562-4](#)
[968782-1](#) [GT17SA-8DS-HU](#) [98891-1012](#) [98947-1016](#) [12004475-L](#) [12010290](#) [12010309-B](#) [12015454](#) [12020219-B](#) [12020308](#) [12041318-B](#)
[12052225-L](#) [12052466](#) [12059125](#) [12064869](#) [12004327-B](#) [12010503-B](#) [12015308](#) [12015384](#) [12015909](#) [1-21030-1](#) [12041254](#) [12041318](#)
[12047946-B](#) [12047957](#) [12047957-L](#) [12059473](#) [12066261](#)