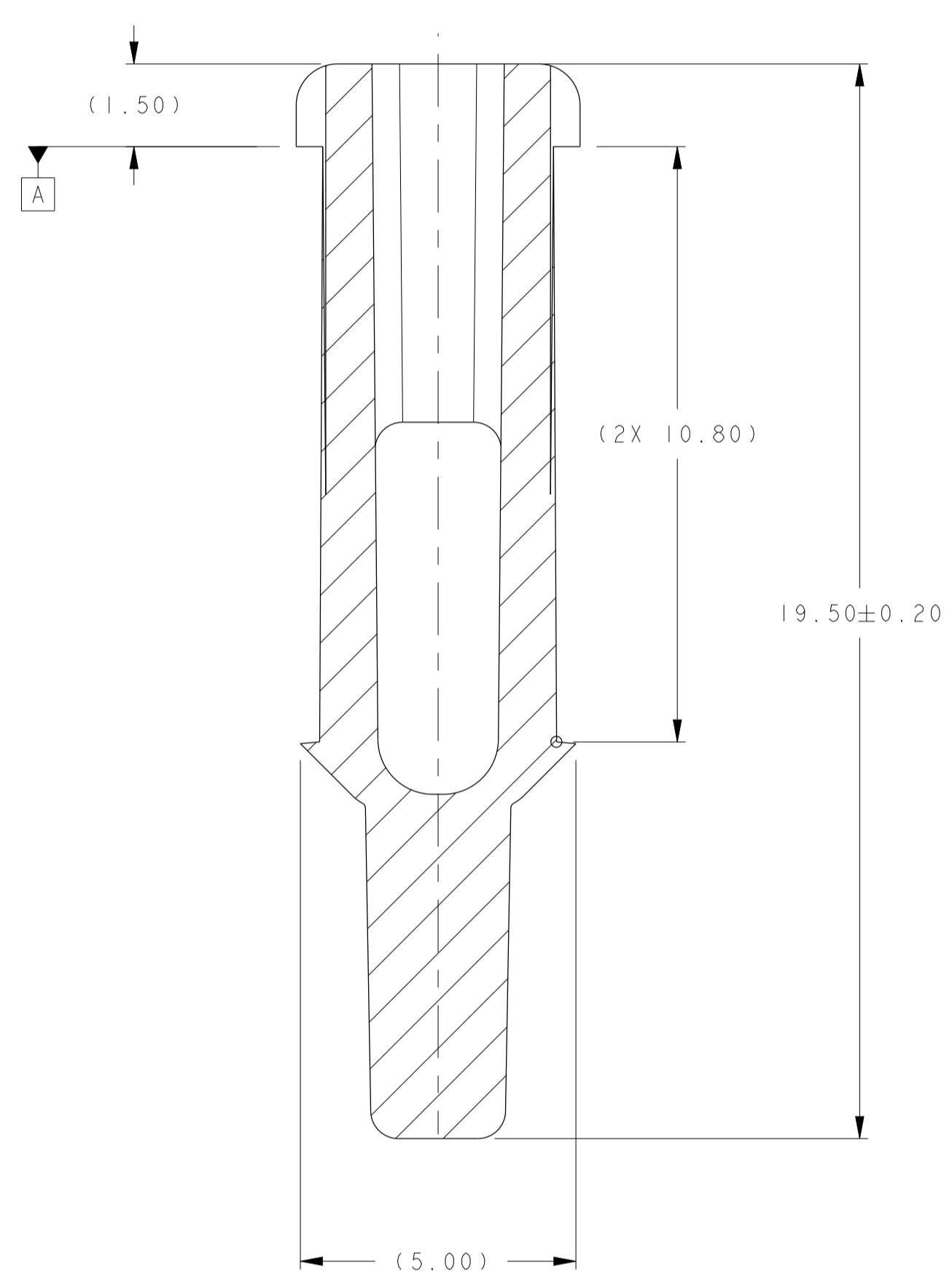
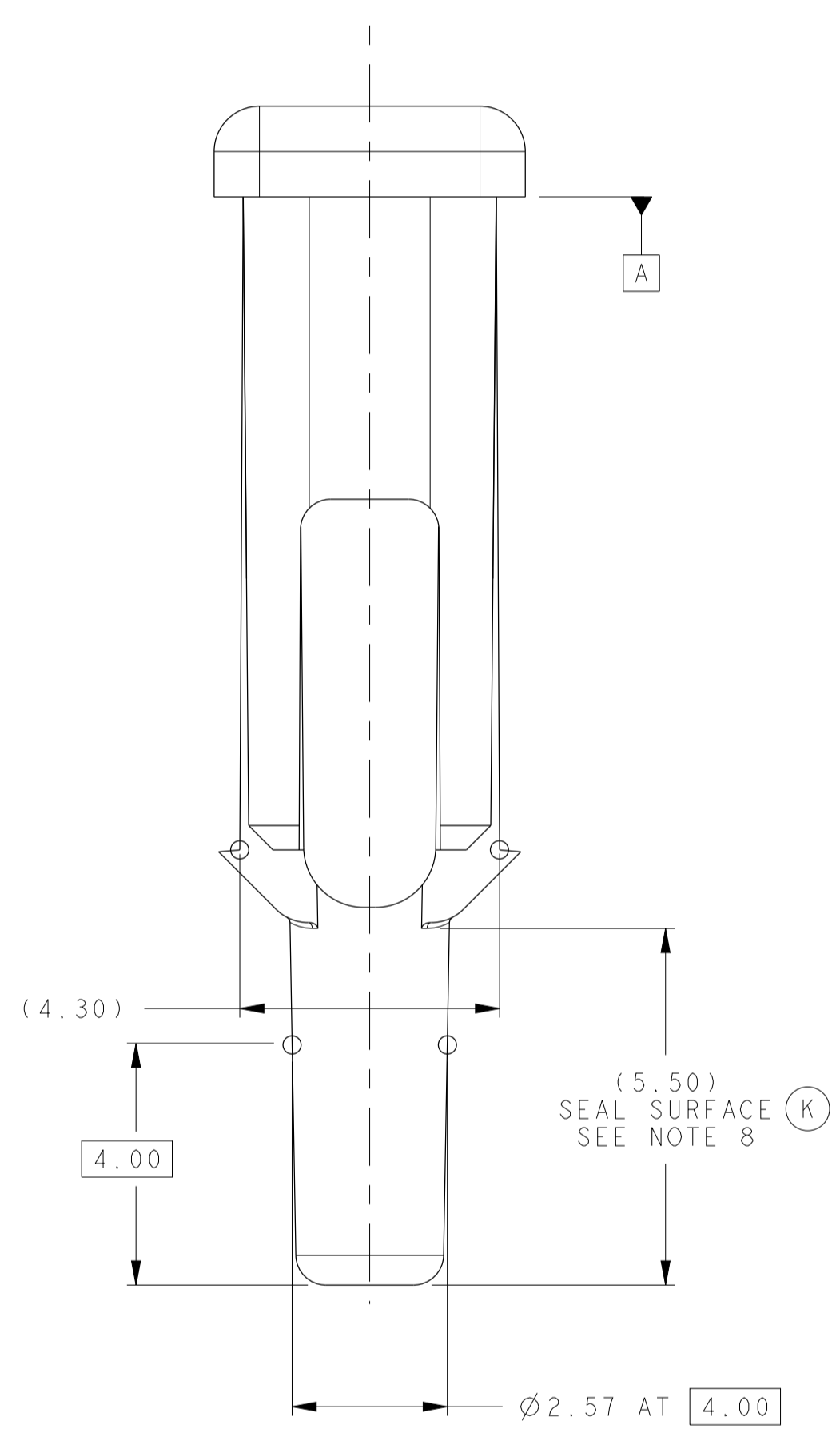
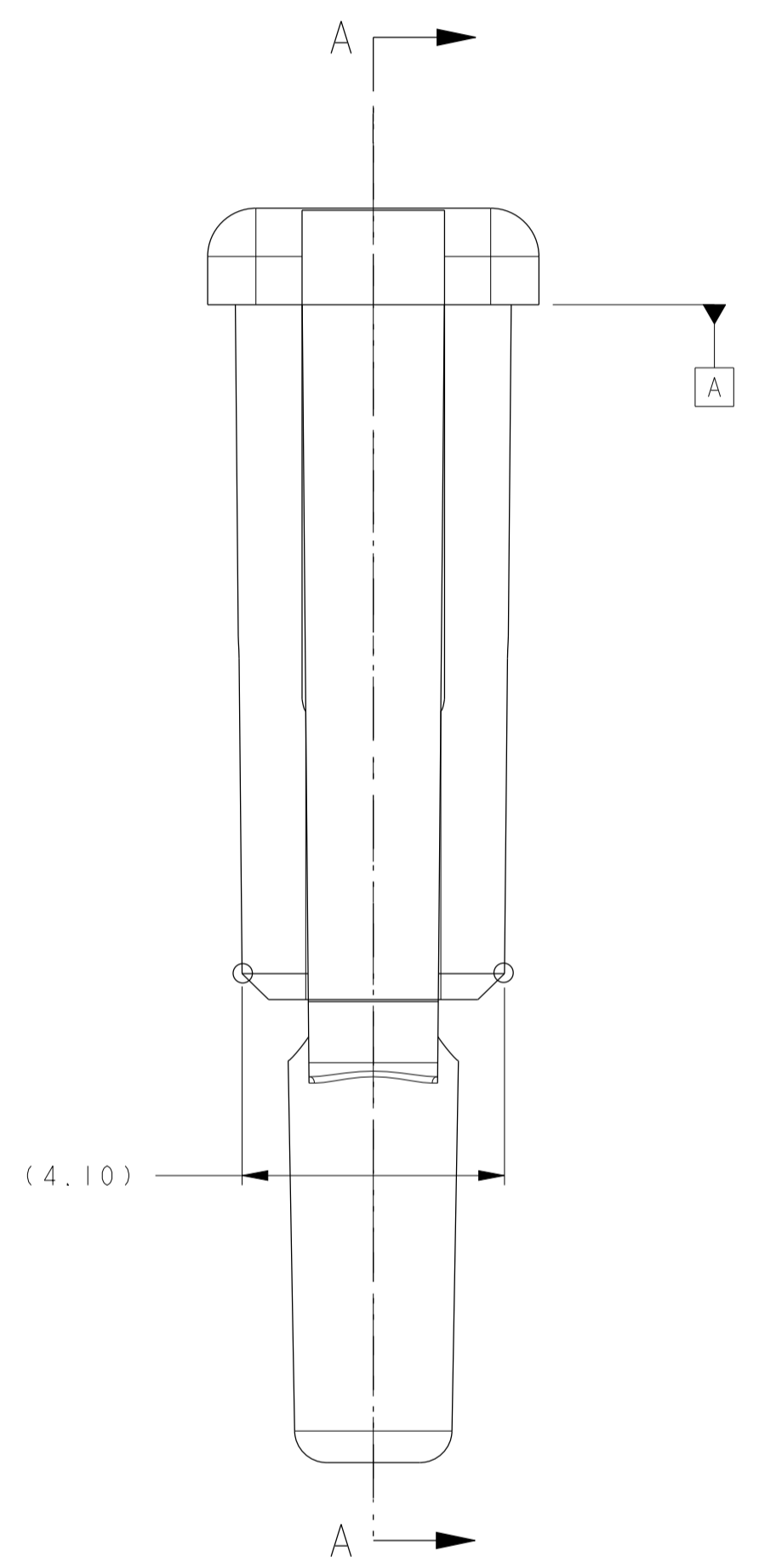
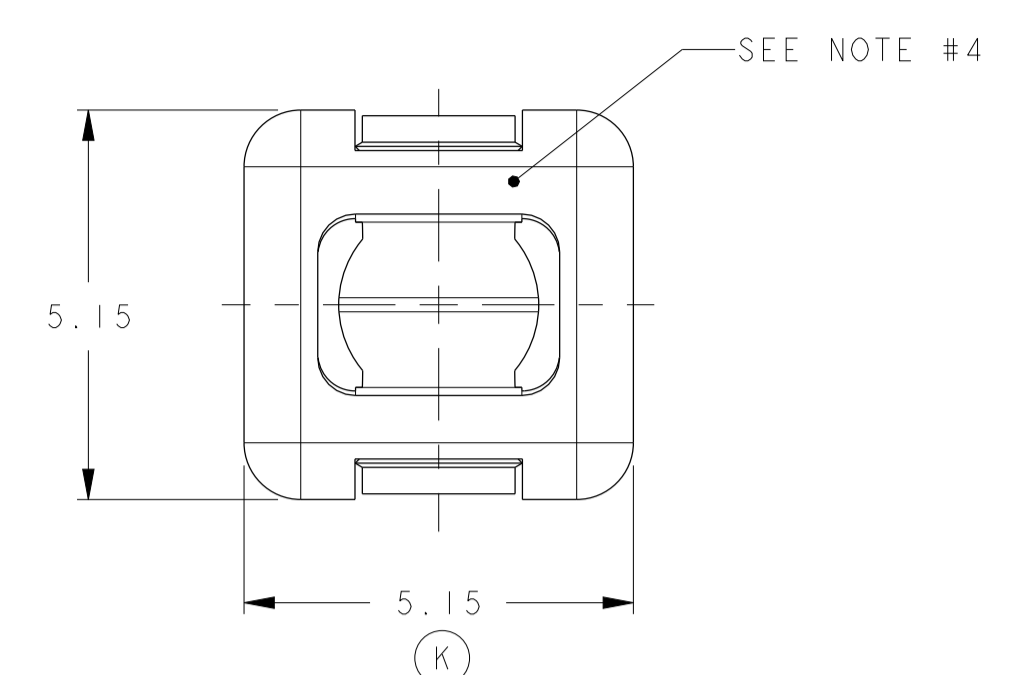
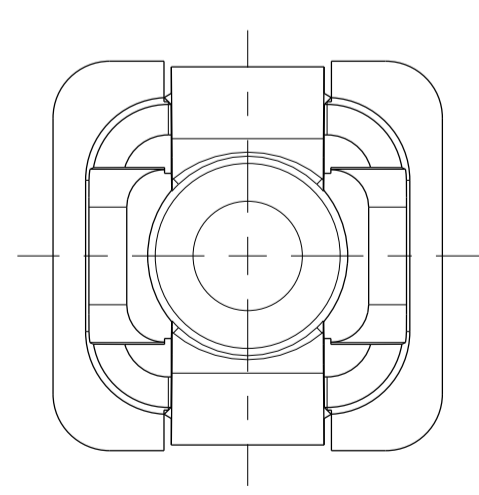


ISO VIEW
SCALE 1:1



SECTION A-A



NOTES:

- UNLESS OTHERWISE SPECIFIED:
TOLERANCE ON:
1 PLACE DIMENSIONS: ± 0.25
2 PLACE DIMENSIONS: ± 0.10
ANGULAR DIMENSIONS: $\pm 3^\circ$
- PART TO BE MOLDED FREE FROM FLASH, VOIDS, STRESSES, IMPERFECTIONS, AND TOOL MARKS, THAT AFFECT FUNCTION, OR HANDLING OF THE PART
- ALL EJECTOR MARKS TO BE RAISED +0.25MM OR RECESSED -0.25MM BELOW THE SURFACE OF THE PART
- SOURCE ID, MOLD ID, CAVITY ID AND RECYCLE CODE TO BE SHOWN LEGIBLY WITH RAISED OR DEPRESSED CHARACTERS TO BE (1.0 HIGH X 0.30 WIDE) MINIMUM
- MOLD VENDOR TO SUBMIT FOR ENGINEERING APPROVAL, LOCATION AND TYPES OF PULLER RINGS, GATING, PARTING LINES AND EJECTION MARKS PRIOR TO CONSTRUCTION OF TOOLING.
- MATERIAL: PER MS-DB41 NYLON PA66 GF35
BASF ULTRAMID A3EG7 OR EQUIVALENT, 100% REGRIND ALLOWED
COLOR: DARK GRAY
RECYCLE CODE: >PA66 GF35<
- PART VOLUME: 151.163 MM³
- NO PARTING LINE OR TOOLING MARKS PERMISSIBLE ON SEALING SURFACE
- INDICATES QUALITY ASSURANCE REQUIREMENTS. SPC DATA REQUIRED: MOLD PROCESS PARAMETERS: CAVITY PRESSURE ONLY
- INDICATES IN PROCESS INSPECTION FOR MANUFACTURING. DIMENSIONS OR SPECIFICATION IS REQUIRED.
- MUST CONFORM TO USCAR 2, REV 4

13-01384	ALL	ECO 424955 - REVISED & REDRAW IN PDS, ADDED DELPHI P/N, MATERIAL SPECIFICATION AND REV LEVEL FOR MVL PART TITLE REVISED WAS SEAL PLUG APEX 150
ECN-NO.	ZONE	CHANGE DESCRIPTION
PRODUCT SPEC:	PACKAGING SPEC:	APPLICATION SPEC:
APEX 150		
<small>THIS DRAWING IS THE PROPERTY OF DELPHI CORPORATION AND CONTAINS DELPHI CONFIDENTIAL INFORMATION. THE REPRODUCTION, DISTRIBUTION AND UTILIZATION OF THIS DOCUMENT OR ITS RELATED CAD DATA, AS WELL AS COMMUNICATION OF ANY CONTENT TO OTHERS, WITHOUT EXPRESS AUTHORIZATION, IS PROHIBITED.</small>		
TOLERANCES	X.XX ± 0.10	MATERIAL: AS NOTED
CONTRIBUTOR:	APEX 150-2.8	COLOR: DARK GREY
DO NOT MEASURE DRAWING		TOOL NO. M425-MALE/CUST
DATE	NAME	TITLE
2008-10-18	T. LEW	SEAL PLUG APEX 150
20151213	Shirley BIAN	PROJECT
20140910	Matt MAJON	APEX 28 MALE CAVITY
20140910	Bob CUE	ESR NO. CAT. NO.
FILE NAME	K53022-CUST	DOCUMENT UNDER PDS CONTROL. NO MODIFICATION ALLOWED OUTSIDE
54240003	C	I3765188 01
MVL	DELPHI	MATERIAL SPECIFICATION
STATE	MI	APPROVAL LEVEL
4	D	SHEET
54240003	A	SCALE 1:1

X-ON Electronics

Largest Supplier of Electrical and Electronic Components

Click to view similar products for [Automotive Connectors](#) category:

Click to view products by [APTIV](#) manufacturer:

Other Similar products are found below :

[003-018-000](#) [60403001](#) [60993906-B](#) [M902-2131](#) [M902-2161](#) [72.330.1035.1](#) [73.353.4028.0](#) [F119300-B](#) [F166900](#) [F258300-B](#) [F358300-B](#)
[F407400](#) [F444110](#) [F487000](#) [F509500B-B](#) [827153-1](#) [8N1515-32-24P](#) [9-1326729-8](#) [925474-1](#) [928905-1](#) [964562-4](#) [968782-1](#) [GT17SA-8DS-](#)
[HU](#) [98891-1012](#) [98947-1016](#) [12004475-L](#) [12010290](#) [12010309-B](#) [12015454](#) [12020219-B](#) [12020308](#) [12041318-B](#) [12052225-L](#) [12052466](#)
[12059125](#) [12064869](#) [12004327-B](#) [12010503-B](#) [12015308](#) [12015384](#) [12015909](#) [1-21030-1](#) [12041254](#) [12041318](#) [12047946-B](#) [12047957](#)
[12047957-L](#) [12059473](#) [12066261](#) [12110546](#)