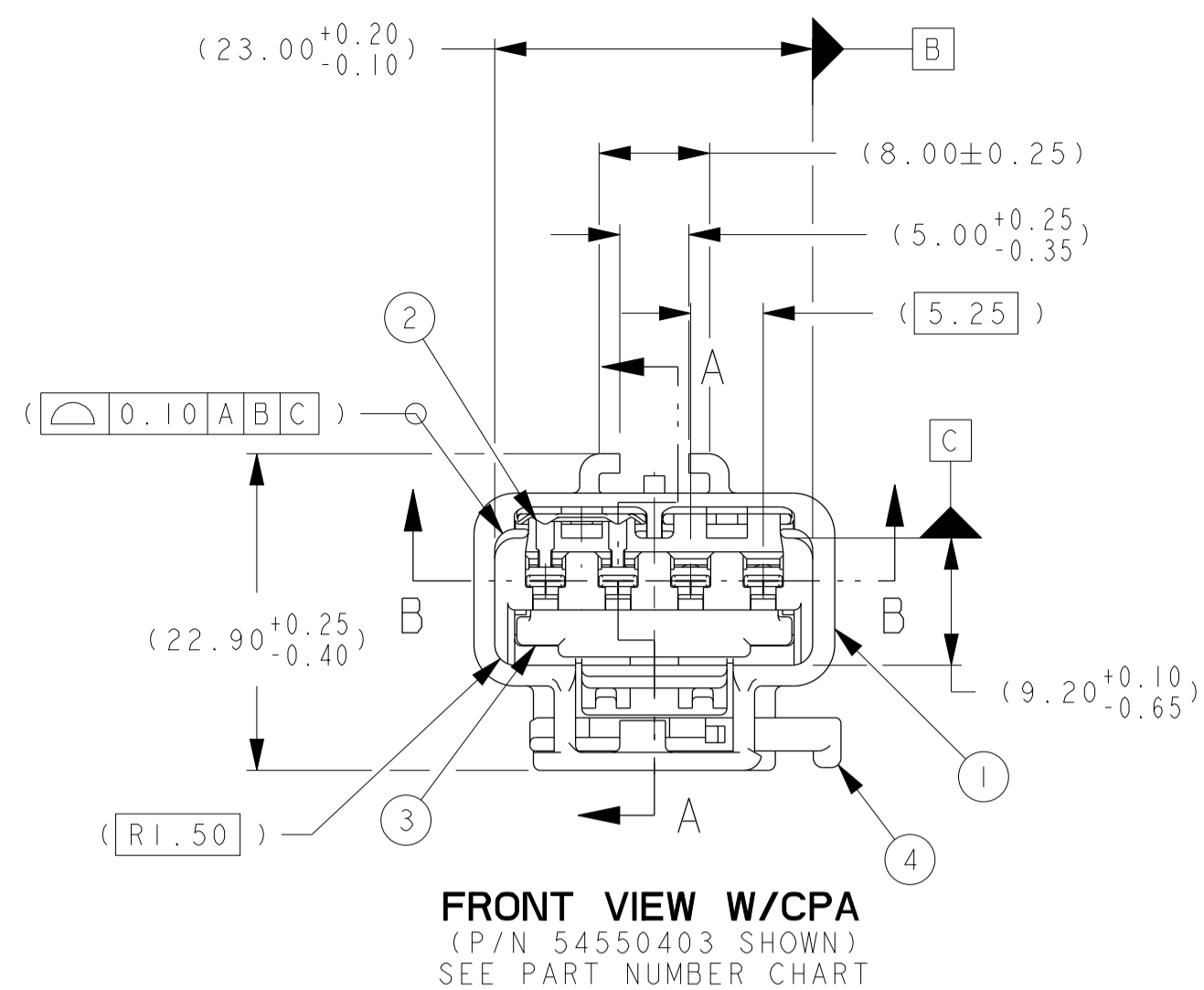
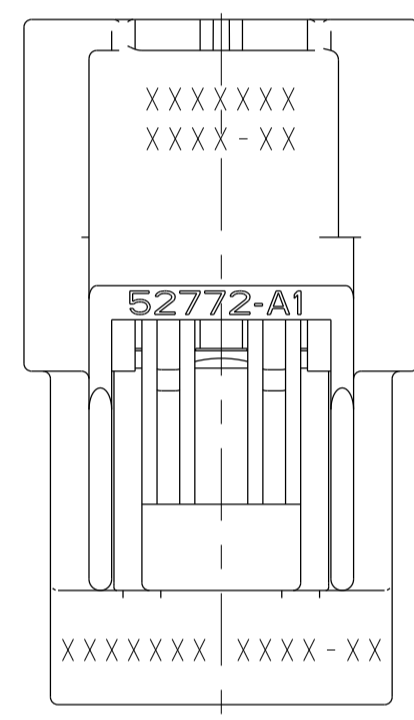


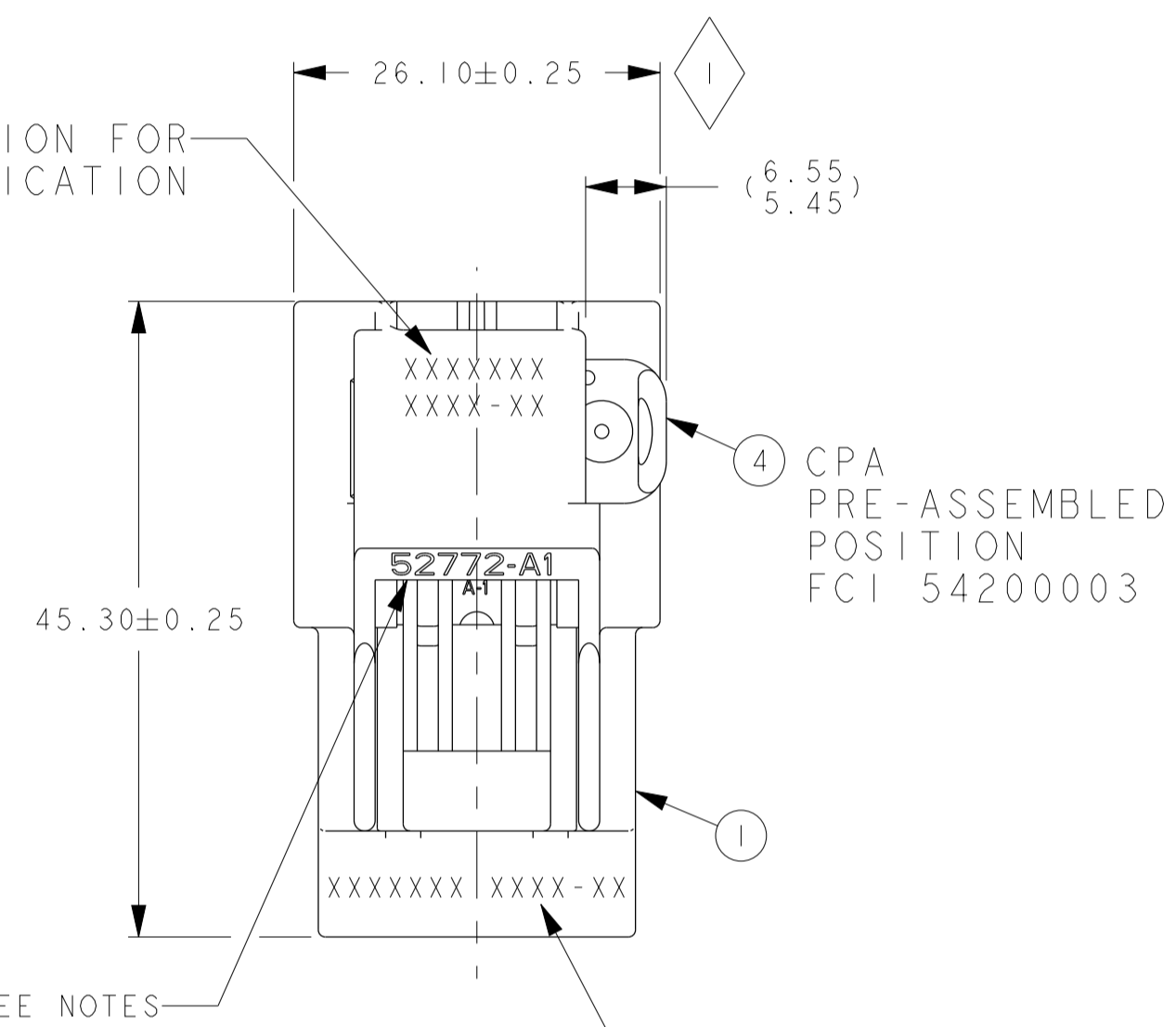
FRONT VIEW W/O CPA
(P/N 54550403N SHOWN)
SEE PART NUMBER CHART



FRONT VIEW W/CPA
(P/N 54550403 SHOWN)
SEE PART NUMBER CHART



OPTIONAL LOCATION FOR PART IDENTIFICATION



CPA
PRE-ASSEMBLED
POSITION
FCI 54200003

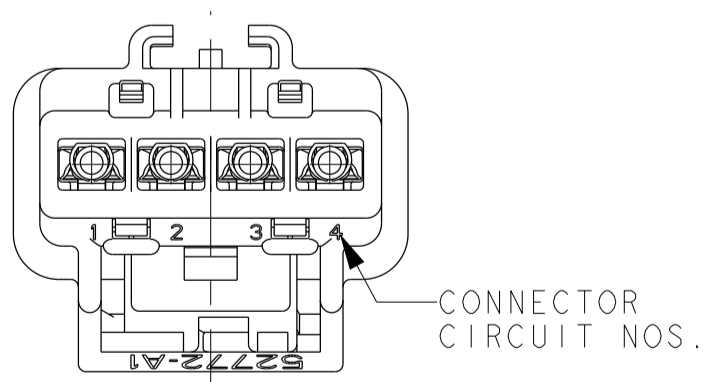
9 SEE NOTES

LAST 5 DIGITS OF 8 DIGIT P/N & PART CHANGE LEVEL (PCL) OR

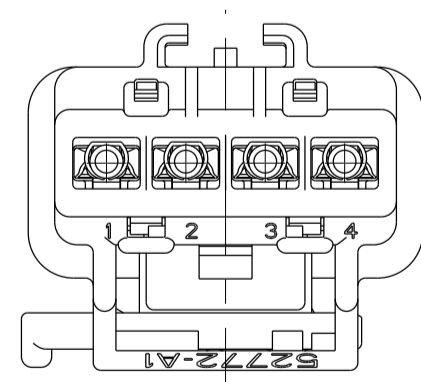
LAST 6 DIGITS OF 9 DIGIT P/N OR 10 DIGIT P/N & PART CHANGE LEVEL (PCL)

MFG. DAILY DATE CODE & ASSY MACHINE NO. LETTERING MUST BE LEGIBLE

OPTIONAL

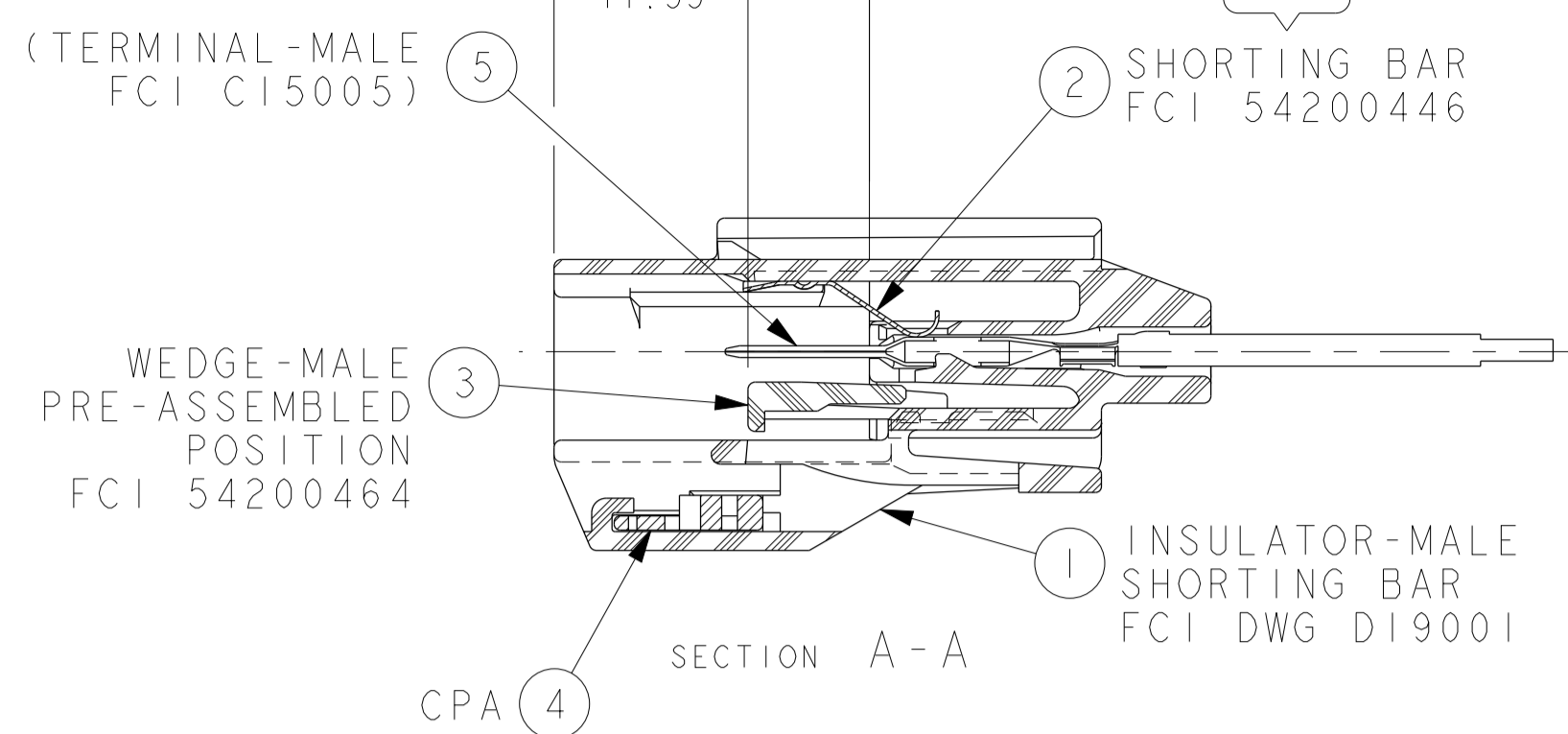


BACK VIEW W/O CPA

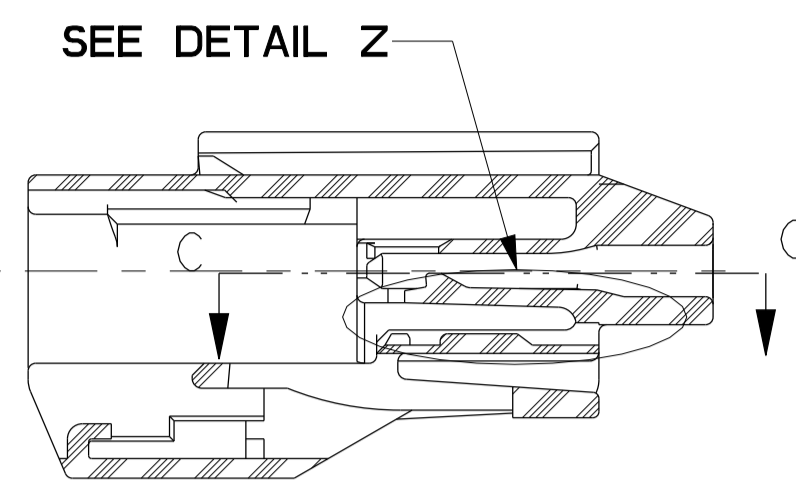


BACK VIEW W/CPA

CONNECTOR CIRCUIT NOS.

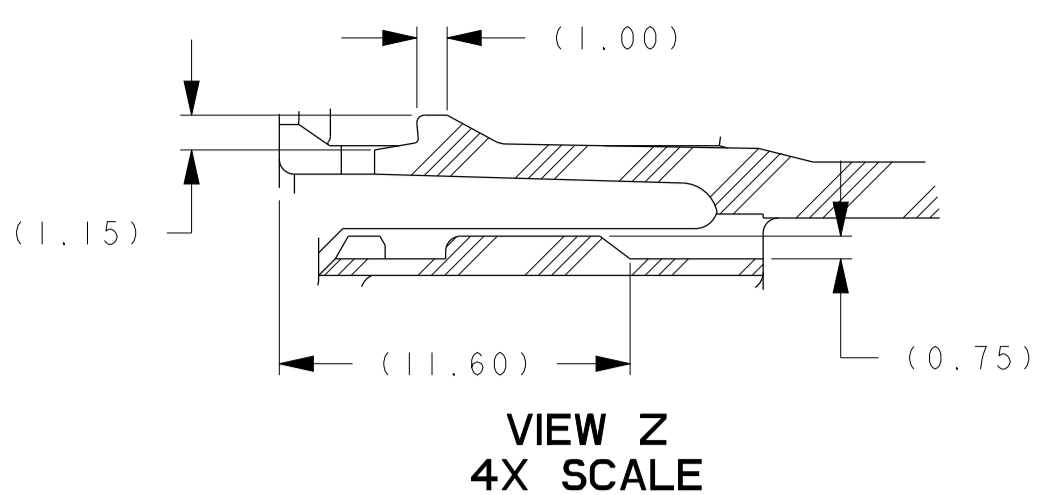


SECTION A-A

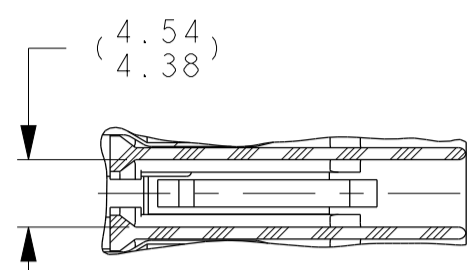


SUPPLEMENTAL SECTION A-A

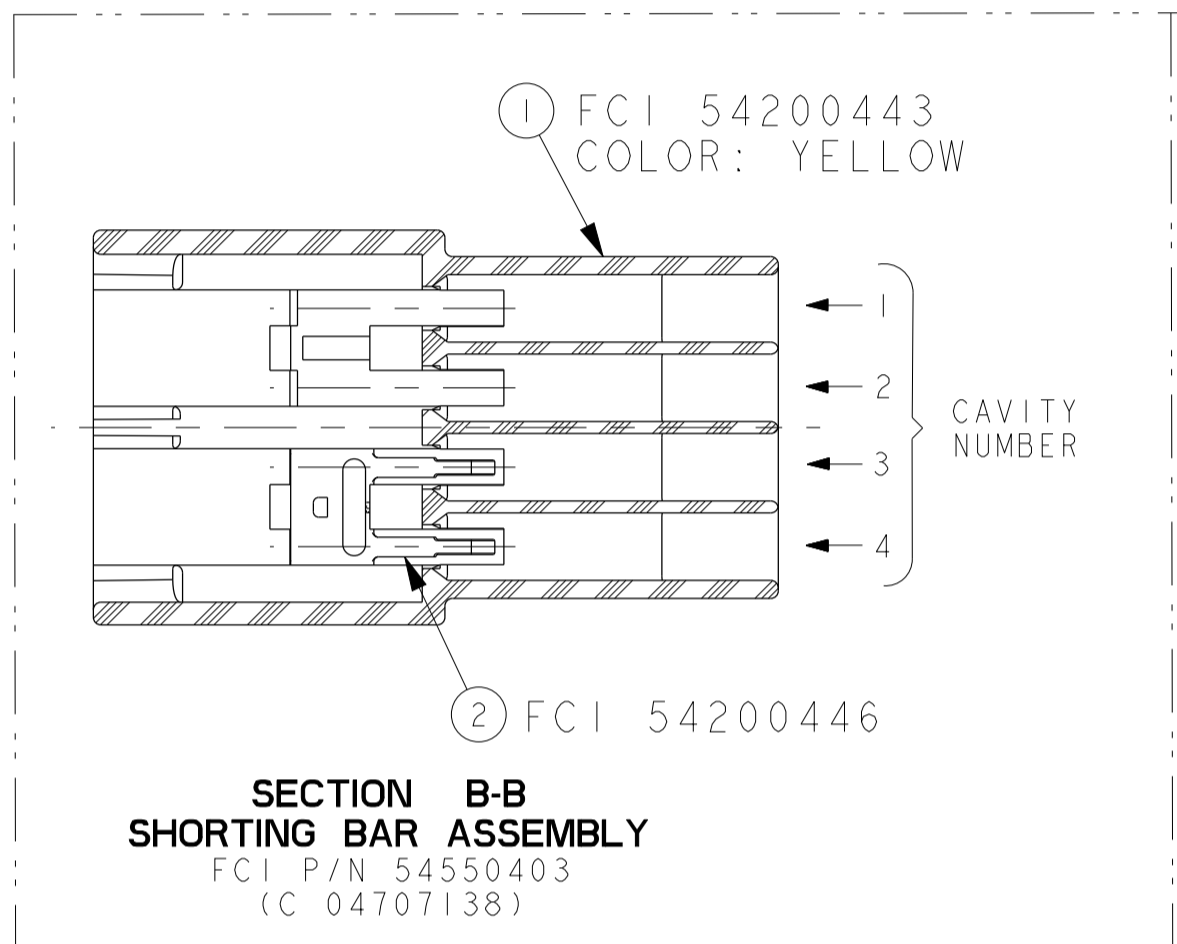
INSULATOR VIEWS FOR REFERENCE



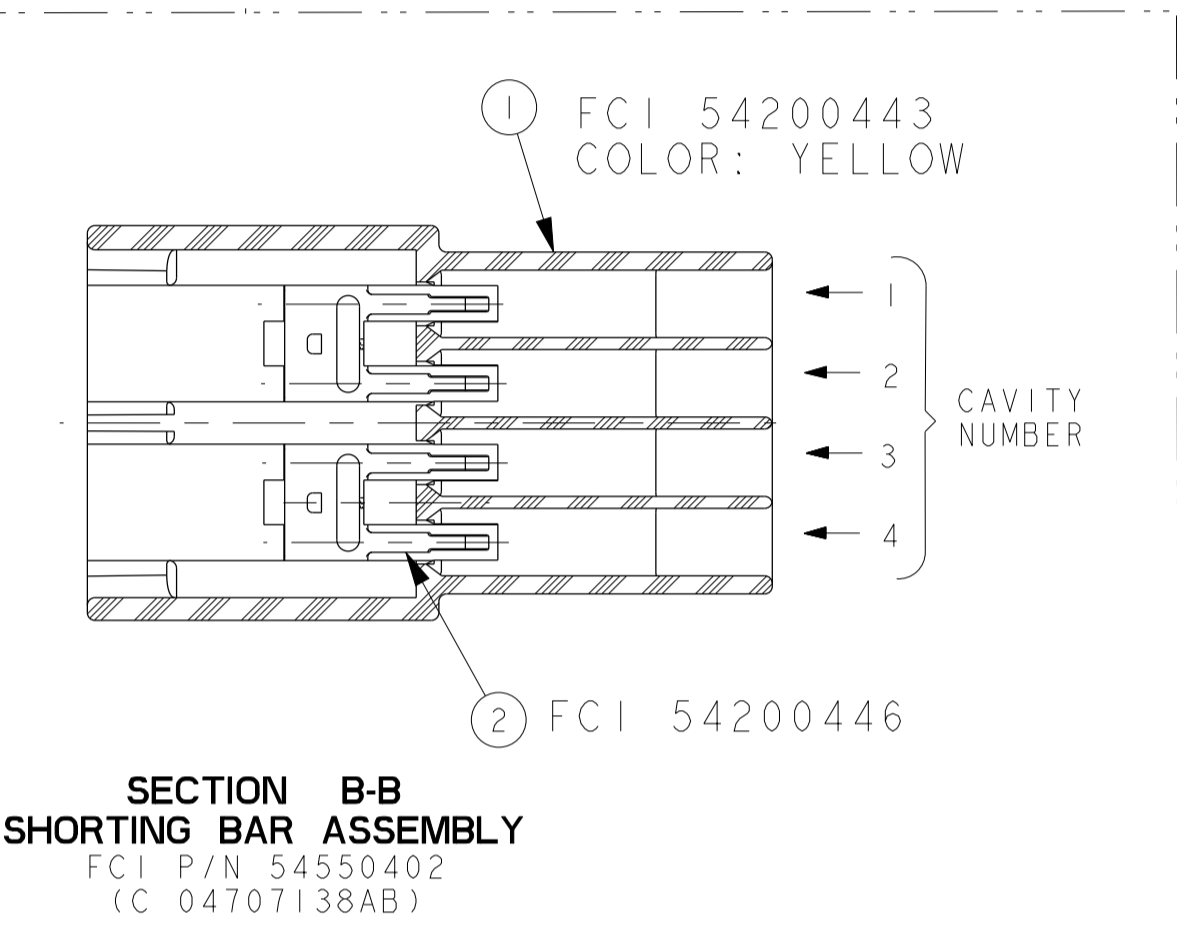
VIEW Z
4X SCALE



PARTIAL SECTION C-C



SECTION B-B
SHORTING BAR ASSEMBLY
FCI P/N 54550403
(C 04707138)



SECTION B-B
SHORTING BAR ASSEMBLY
FCI P/N 54550402
(C 04707138AB)

NOTES:

- 1 QUALITY ASSURANCE REQUIREMENTS PER CHRYSLER PS-7300:1 SPC DATA REQUIRED
- 2 ENGINEERING APPROVAL OF SUPPLIER SAMPLES IS REQUIRED PRIOR TO AUTHORIZATION OF PART PRODUCTION.
- 3 CHANGES IN DESIGN COMPOSITION OR PROCESSING FROM THE PART PREVIOUSLY APPROVED FOR PART PRODUCTION REQUIRES PRIOR ENGINEERING APPROVAL
- 4 WIRE FABRICATORS MUST PURCHASE FROM SOURCES SHOWN
- 5 RECOMMENDED TO BE USED WITH THINWALL INSULATION 22 GA. THRU 14 GA. PER MS-8288, MS-9502 OR MS-7889 (EXCEPT AS NOTED) PROVIDING THAT TERMINAL GRIP FOR THAT CORE/INSULATION COMBINATION IS SHOWN ON THE MALE TERMINAL DRAWING
MAX. CORE CRIMP WIDTH= 2.85
MAX. CORE CRIMP HEIGHT= 2.25
MAX. INSULATION CRIMP WIDTH= 3.60
MAX. INSULATION CRIMP HEIGHT= 3.23
- 6 USE WITH DOUBLE X-MAS TREE CLIP P/N 04707091 WHEN REQUIRED
USE WITH SINGLE X-MAS TREE CLIP P/N 04625797 WHEN REQUIRED
USE WITH 2.80MM APEX MALE TERM PER C15005-CUST SYM ABOUT CENTERLINE 180° ORIENTATION PERMISSIBLE
- 7 PART MATES WITH FCI P/N 54550400 (CHRYSLER P/N 04707139)
- 8 TEST METHOD PER CHRYSLER PERFORMANCE SPEC# PF-9600. CONNECTOR ENGAGE & DISENGAGE WITH FEMALE LATCH DEPRESSED FORCE NOT TO EXCEED 90 N FOR THIS SYSTEM
CPA SEATING FORCES- 40 N MAX
WEDGE SEATING FORCES- 100 N MAX
X-MAS TREE CLIP INSERTION FORCES- 75 N MAX
- 9 SUPPLIER, MOLD & CAVITY I.D. SIGNIFIES TOOL OWNERSHIP, FOR REFERENCE
- 10 ANNUAL QUALITY REQUIREMENTS: IT IS PERMISSIBLE TO PERFORM CONTINUOUS CONFORMANCE PER FCI SPECIFICATION #AQA-001 INSTEAD OF ANNUAL LAYOUT & ANNUAL PV REQUIREMENTS OF QS-9000 SECTION 2 & PF-9600

ALL NON-REFERENCE DIMENSIONS ARE REQUIRED
- CURRENT PRODUCTION TOOLING
- POINT OF LAST RUN
SERVICE TOOLING GUIDE INFORMATION PER APEX TRAINING MANUAL

- 11 MUST CONFORM TO THE FOLLOWING CHRYSLER STANDARDS:
PF-9600 PERFORMANCE CHRYSLER EXCEPT AS NOTED ABOVE
PS-7300 QUALITY ASSURANCE CHRYSLER
PF-SAFETY
PS-4480-CEK-4 CHRYSLER PART I.D., (G-009-2 YNA)
PS-9065 REGRIND, CHRYSLER (G-009-7 YNA)
PS-9227 DATA EXCHANGE, CHRYSLER (G-009-7 YNA)
PS-10052 INFORMATION SECURITY CHRYSLER
- 12 THIS DRAWING (H59004) REPLACES CHRYSLER DRAWING NUMBER 04707464 LEVEL "G" CHRYSLER DRAWING IS FOR REFERENCE ONLY
- 13 FCI P/N'S WITH SUFFIX "N" DESIGNATES ASSEMBLIES WITHOUT CPA

FCI	52772 OR 52772 H	W/O SHT. CLIP	PCL	W/ SHT. CLIP	PCL	(CHRYSLER) PART NO.	CUSTOMER PART NO.	SHORTING BAR LOC.
F540210	L	54550402N	K	N/A	N/A	1 & 2 + 3 & 4		
		54550403N	K	N/A	N/A	3 & 4		
F640210	L	54550402	K	04707138AB	TRW 2003103D	1 & 2 + 3 & 4		
		54550403	K	04707138	N/A	3 & 4		

LEGENDS:
CHRYSLER: C
TRW: TRW

VENDOR VENDOR CODE FCI PART NO.

12-00125	ALL	REVISED AND REDRAWN IN PDS SEE REV K1 FOR PREVIOUS CHANGES ADDED P/N'S F540210 AND F640210 WITHOUT SHORTING BARS AND MATING P/N CHART REVISED P/N'S 54200401 & 54200401N COLOR ORANGE REMOVED NOT AVAILABLE	
ECN-NO.	ZONE	CHANGE DESCRIPTION	
PROJECT SPEC.	PACKAGING SPEC.	APPLICATION SPEC.	THIS DRAWING AND ALL OTHER INFORMATION CONTAINED THEREIN IS PROPRIETARY AND THE PROPERTY OF FCI. THIS DRAWING MAY NOT BE COPIED, REPRODUCED OR DISCLOSED TO ANY THIRD PARTY WITHOUT THE EXPRESSED WRITTEN PERMISSION OF FCI. FCI April 10, 1999
TOLERANCES	SEE DWG	MATERIAL: PA66GF	SURFACE FINISH
CONTROL M.	H59013	COLOR: YELLOW	
DO NOT MEASURE DRAWING		TOOL NO. A-035	ECO Loc. C46 AN
CREATED BY	DATE	NAME	TITLE
2008-09-31		RAJAJUMAR	CHART-ASSEMBLY
MODIFIED BY	DATE	NAME	TITLE
20100109		Sudha BIAN	4-WAY MALE
CHECKED BY	DATE	NAME	TITLE
20100109		Frank HOLZBL	PROJECT SHORTING BAR (UNSEALED)
APPROVED BY	DATE	NAME	TITLE
20100109		JIM CAMPBELL	28MM APEX CONNECTOR SYSTEM
FILE NAME	H59004	ESR NO.	CAT. NO.

EUR. CON. 11/1 FEB 03S

SCALE 2.00

X-ON Electronics

Largest Supplier of Electrical and Electronic Components

Click to view similar products for [Automotive Connectors](#) category:

Click to view products by [APTIV](#) manufacturer:

Other Similar products are found below :

[003-018-000](#) [60403001](#) [60993906-B](#) [629515004020001](#) [M902-2131](#) [M902-2161](#) [72.330.1035.1](#) [73.353.4028.0](#) [F119300-B](#) [F166900](#)
[F258300-B](#) [F358300-B](#) [F407400](#) [F444110](#) [F487000](#) [F509500B-B](#) [827153-1](#) [8N1515-32-24P](#) [9-1326729-8](#) [925474-1](#) [928905-1](#) [964562-4](#)
[968782-1](#) [GT17SA-8DS-HU](#) [98891-1012](#) [98947-1016](#) [12004475-L](#) [12010290](#) [12010309-B](#) [12015454](#) [12020219-B](#) [12020308](#) [12041318-B](#)
[12052225-L](#) [12052466](#) [12059125](#) [12064869](#) [12004327-B](#) [12010503-B](#) [12015308](#) [12015384](#) [12015909](#) [1-21030-1](#) [12041254](#) [12041318](#)
[12047946-B](#) [12047957](#) [12047957-L](#) [12059473](#) [12066261](#)