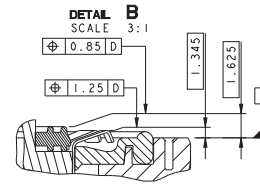


ZONE DE MARQUAGE
MARKING AREA

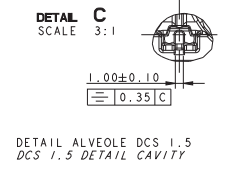
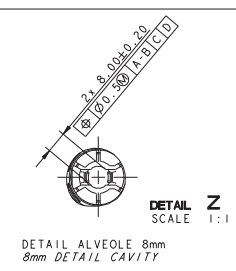
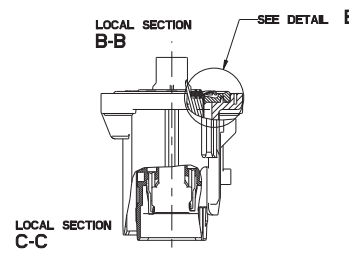
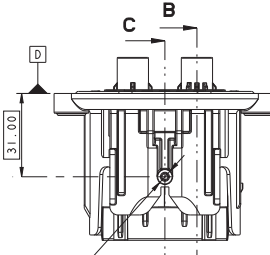
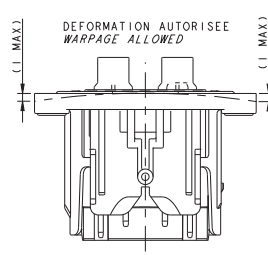
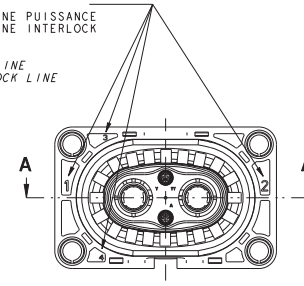
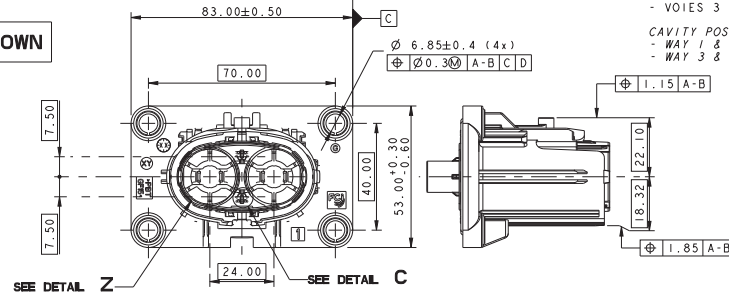
CODING 1 SHOWN

DESIGNATION DESIGNATION	REFERENCE MVL MVL PART-N°	REFERENCE DELPHI DELPHI PART-N°	SECTION DU FIL WIRE SECTION	DIAMETRE EXTERNE DU FIL EXTERNAL WIRE DIAMETER	JUF / SWS		COULEUR COLOR
					REFERENCE MVL MVL PART-N°	REFERENCE DELPHI DELPHI PART-N°	
TO SEE TABLE ON SHEET 2							
LANGUETTE RONDE 8mm ARGENTE SILVER 8mm ROUND MALE TERMINAL	6 010 07 14	33511802	0.35mm ²	Ø1.25 - 1.35	6 099 39 13	15441379	ROUGE RED
LANGUETTE DCS2 1.5 DOREE GOLD DCS2 1.5 MALE TERMINAL	6 010 07 34	10779703	0.5mm ²	Ø1.4 - 1.5	6 099 39 28	15441380	GRIS GREY
PORTE-CLIPS 2V RCS800 V2 CODE1 2W RCS800 V2 CODE1 FEMALE CONNECTOR	F673110	13974469	1.0-mm ²	Ø1.75 - 1.9	6 099 39 28	15441380	
	F773110	33511761					
PORTE-CLIPS 2V RCS800 V2 CODE2 2W RCS800 V2 CODE2 FEMALE CONNECTOR	A DEFINIR TO BE DEFINED	A DEFINIR TO BE DEFINED					
PORTE-CLIPS 2V RCS800 V2 CODE3 2W RCS800 V2 CODE3 FEMALE CONNECTOR							



REPERES ALVEOLE :
- VOIES 1 ET 2 : LIGNE PUISSANCE
- VOIES 3 ET 4 : LIGNE INTERLOCK

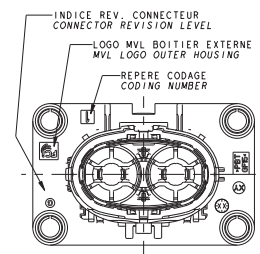
CAVITY POSITIONING:
- WAY 1 & 2: POWER LINE
- WAY 3 & 4: INTERLOCK LINE



- NOTES:
- CAHIER DES CHARGES MVL : FE PS 10 008
 - CLASSE DE TEMPERATURE DU CONNECTEUR : CLASS 3 (-40°C ; +125°C)
 - CLASSE DE VIBRATION :
 - PRECONDITIONNEMENT
 - 3x 16h (COMBINEE AVEC TEMPERATURE -40°C/+125°C) ; 3.9g
 - CLASSE D'ETANCHEITE :
 - 1000mb INITIAL
 - 500mb APRES LES TESTS D'ENVIRONNEMENT
 - EFFORT D'ACCROULEMENT : F=80N
 - CONDITIONNEMENT : FE PA 10 003
 - DOSSIER DE MISE EN OEUVRE : PU138
 - MASSE DU PRODUIT : 0.09 kg ±10%
 - CE PLAN EST UN EXTRAIT DES PLANS DE DEFINITIONS.
 - ON FERA REFERENCE POUR TOUT LITIGE AUX PLANS DE DEFINITIONS.
 - PLAN DU PORTE-CLIPS : PCC0732943
 - LE COUPLE DE SERRAGE PRECONISE PARTICIPE A UNE FONCTION SECURITAIRE D'ETANCHEITE.

- NOTES:
- MVL PRODUCT SPECIFICATIONS: FE PS 10 008
 - TEMPERATURE CLASS OF THE CONNECTOR: CLASS 3 (-40°C ; +125°C)
 - VIBRATION CLASS:
 - PRECONDITIONING
 - 3x 16h (COMBINED WITH TEMPERATURE -40°C/+125°C) ; 3.9g
 - SEALING CLASS:
 - 1000mb INITIAL
 - 500mb AFTER TEST ENVIRONMENT.
 - MATING FORCE: F=80N
 - PACKAGING: FE PA 10 003
 - HANDLING MANUAL: PU138
 - MASS OF THE PRODUCT: 0.09 kg ±10%
 - THIS DRAWING IS AN EXTRACT OF THE DETAIL DRAWINGS.
 - IN CASE OF CONFLICT, REFER TO THEM.
 - DRAWING FEMALE CONNECTOR: PCC0732943
 - THE PRECONIZED SCREWING TORQUE PARTICIPATE TO A SECURITY SEALING FEATURE.

REFERENCE MVL / MVL PART-N°	F473110 REVISION G	F573110 REVISION G	A DEFINIR / TO BE DEFINED
REFERENCE DELPHI / DELPHI PART-N°	33511764 REVISION 01	33511762 REVISION 01	
CODAGE MECANIQUE MECHANICAL KEY	CODAGE 1 KEY 1	CODAGE 2 KEY 2	CODAGE 3 KEY 3
IDENTIFIANT IMDS IMDS ID	212448595	212869634	A DEFINIR TO BE DEFINED
CODAGE CONNECTEUR SUIVANT VUE DE FACE ECHELLE: 1:1 PLUG CODING FRONT VIEW SCALE: 1:1	<p>2 CODEURS 2 PLACES</p> <p>Dimensions: 35°±3.5°, 2.00±0.15, R17.7</p>	<p>2 CODEURS 2 PLACES</p> <p>Dimensions: 45°±3.5°, 2.00±0.15, R17.7</p>	<p>2 CODEURS 2 PLACES</p> <p>Dimensions: 55°±3.5°, 2.00±0.15, R17.7</p>
CODAGE EQUIPEMENT SUIVANT VUE ARRIERE ECHELLE: 1:1 DEVICE CODING REAR VIEW SCALE: 1:1	<p>Dimensions: 22.50, 8.50, 0.3 A-B, 0.2 C</p>	<p>Dimensions: 22.50, 6.75, 0.3 A-B, 0.2 C</p>	<p>Dimensions: 22.50, 6.75, 0.3 A-B, 0.2 C</p>



DELPHI P/W ADDED

ECO-NO.	POSITION	DESCRIPTION	DATE

PRODUCT SPEC: PROJECT: SPECIF. PART-N°: APPLICATION SPEC: SPECIF. PART-N°: CHANNEL DESCRIPTION: PART 1 OF 1

PROPERTY: PROJECT: SPECIF. PART-N°: APPLICATION SPEC: SPECIF. PART-N°: CHANNEL DESCRIPTION: PART 1 OF 1

PREPARED BY: DATE: CHECKED BY: DATE: DRAWING TITLE: 2W POWER RCS800 V2 HEADER

DESIGNED BY: DATE: CHECKED BY: DATE: DRAWING TITLE: 2W POWER RCS800 V2

DRAWING NO.: PCC0732944

REV. 1

DATE: 2014-07-23

SCALE: 1:1

SEE TABLE

X-ON Electronics

Largest Supplier of Electrical and Electronic Components

Click to view similar products for [Automotive Connectors](#) category:

Click to view products by [APTIV](#) manufacturer:

Other Similar products are found below :

[003-018-000](#) [60403001](#) [60993906-B](#) [629515004020001](#) [M902-2131](#) [M902-2161](#) [72.330.1035.1](#) [73.353.4028.0](#) [F119300-B](#) [F166900](#)
[F258300-B](#) [F358300-B](#) [F407400](#) [F444110](#) [F487000](#) [F509500B-B](#) [827153-1](#) [8N1515-32-24P](#) [9-1326729-8](#) [925474-1](#) [928905-1](#) [964562-4](#)
[968782-1](#) [GT17SA-8DS-HU](#) [98891-1012](#) [98947-1016](#) [12004475-L](#) [12010290](#) [12010309-B](#) [12015454](#) [12020219-B](#) [12020308](#) [12041318-B](#)
[12052225-L](#) [12052466](#) [12059125](#) [12064869](#) [12004327-B](#) [12010503-B](#) [12015308](#) [12015384](#) [12015909](#) [1-21030-1](#) [12041254](#) [12041318](#)
[12047946-B](#) [12047957](#) [12047957-L](#) [12059473](#) [12066261](#)