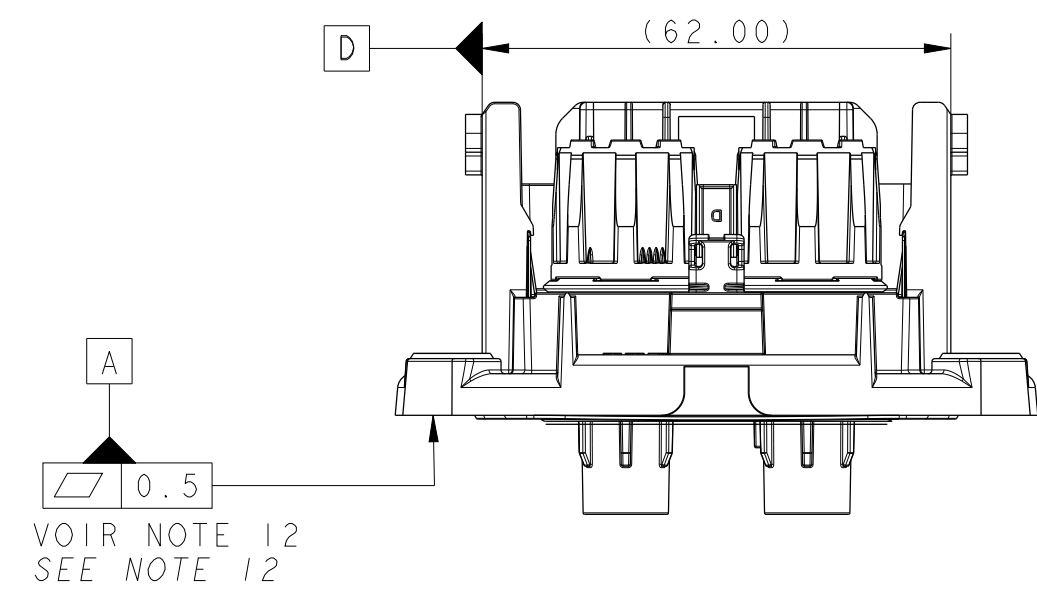
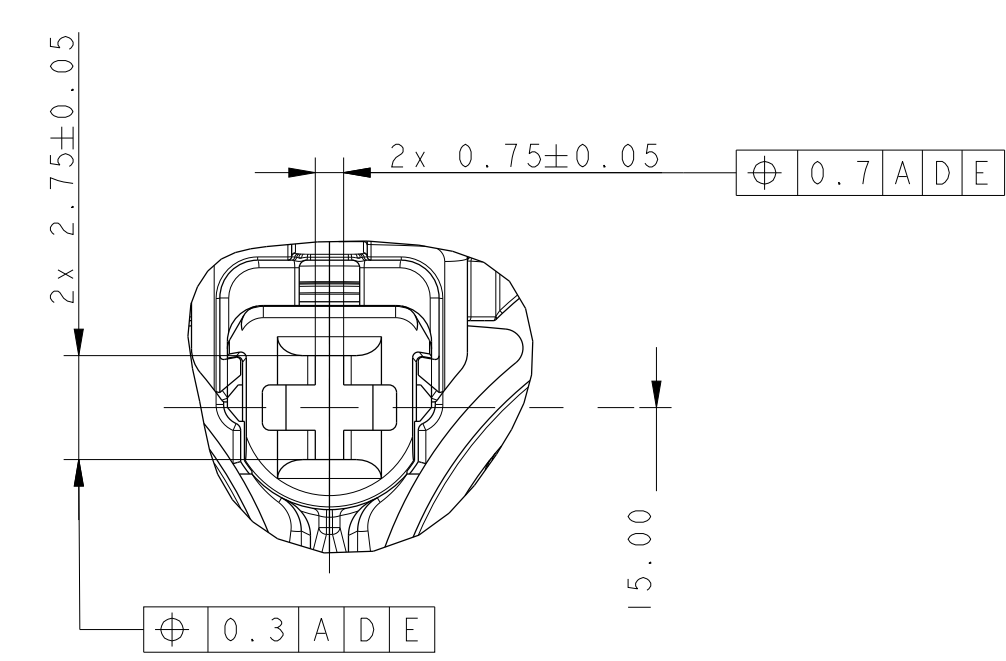


DESIGNATION DESIGNATION	REFERENCE MVL MVL PART-N°	REFERENCE DELPHI DELPHI PART-N°	SECTION DU FIL WIRE SECTION	DIAMETRE EXTERNE DU FIL EXTERNAL WIRE DIAMETER	JUF / SWS		
					REFERENCE MVL MVL PART-N°	REFERENCE DELPHI DELPHI PART-N°	COULEUR COLOR
LANGUETTE RONDE 8mm ARGENTE SILVER 8mm ROUND MALE TERMINAL	VOIR TABLEAU "POSITION DU BUSBAR" PAGE 2 / SEE "BUSBAR POSITION" TABLE ON SHEET 2						
CLIP DCS2 1.5 DORE GOLD DCS2 1.5 FEMALE TERMINAL	60001214	13547706	0.35mm ²	Ø1.25 - 1.35	60993913	15441379	ROUGE RED
ORTE-CLIPS 2V RCS890 CODE1 2W RCS890 CODE1 FEMALE CONNECTOR	60001234	10847167	0.5mm ²	Ø1.4 - 1.5	60993928	15441380	GRIS GREY
ORTE-CLIPS 2V RCS890 CODE2 2W RCS890 CODE2 FEMALE CONNECTOR	F922210	33511750	1.0mm ²	Ø1.75 - 1.9			
	F032210	33511751			COD2 OUTILLAGE NON LANCE / COD 2 TOOLS NOT LAUNCHED		

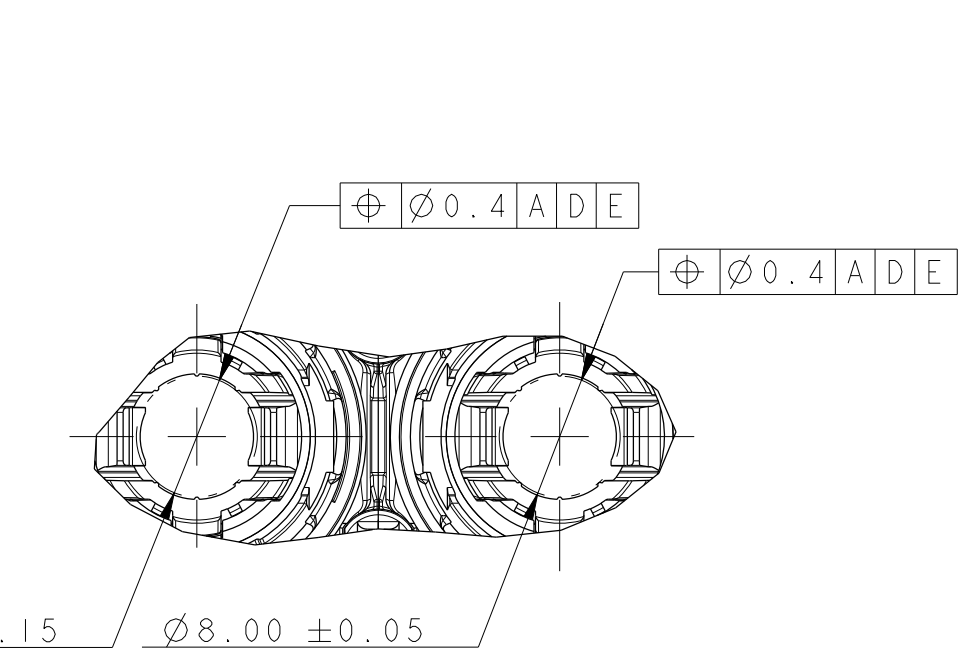
REPERE	DESIGNATION TITLE	COULEUR COLOR	MATIERE MATERIAL	QUANTITE QUANTITY
1	BOITIER EXTERNE COD 1 KEY 1 OUTER HOUSING	ORANGE ORANGE	PA 6.6 30% FV PA6.6 GF 30	1
2	BOITIER INTERNE INNER HOUSING	ORANGE ORANGE	PBT 15% FV PBT GF 15	1
3	BLINDAGE COURT SHIELD SHORT	-	ALLIAGE DE CUIVRE CuFe2P + ETAIN COPPER ALLOY CuFe2P + TIN	2
4	BLINDAGE LONG SHIELD LONG	-	ALLIAGE DE CUIVRE CuFe2P + ETAIN COPPER ALLOY CuFe2P + TIN	2
5	JOINT PLAT INTERIEUR INTERNAL FLAT SEAL	GRIS GREY	SILICONE LSR LSR SILICON	1
6	JOINT PLAT EXTERIEUR EXTERNAL FLAT SEAL	GRIS GREY	SILICONE LSR LSR SILICON	1
7	JOINT INTERFACIAL INTERFACE SEAL	GRIS GREY	SILICONE LSR LSR SILICON	1
8	CHEMINEE PROTECTIVE CHIMNEY	ORANGE ORANGE	PBT 15% FV PBT GF 15	2
9	TPA TPA	BLEU BLUE	PA 6.6 30% FV PA6.6 GF 30	2
10	INSERT METALLIQUE METALIC INSERT	-	ACIER C67S CARBON STEEL C67S	4



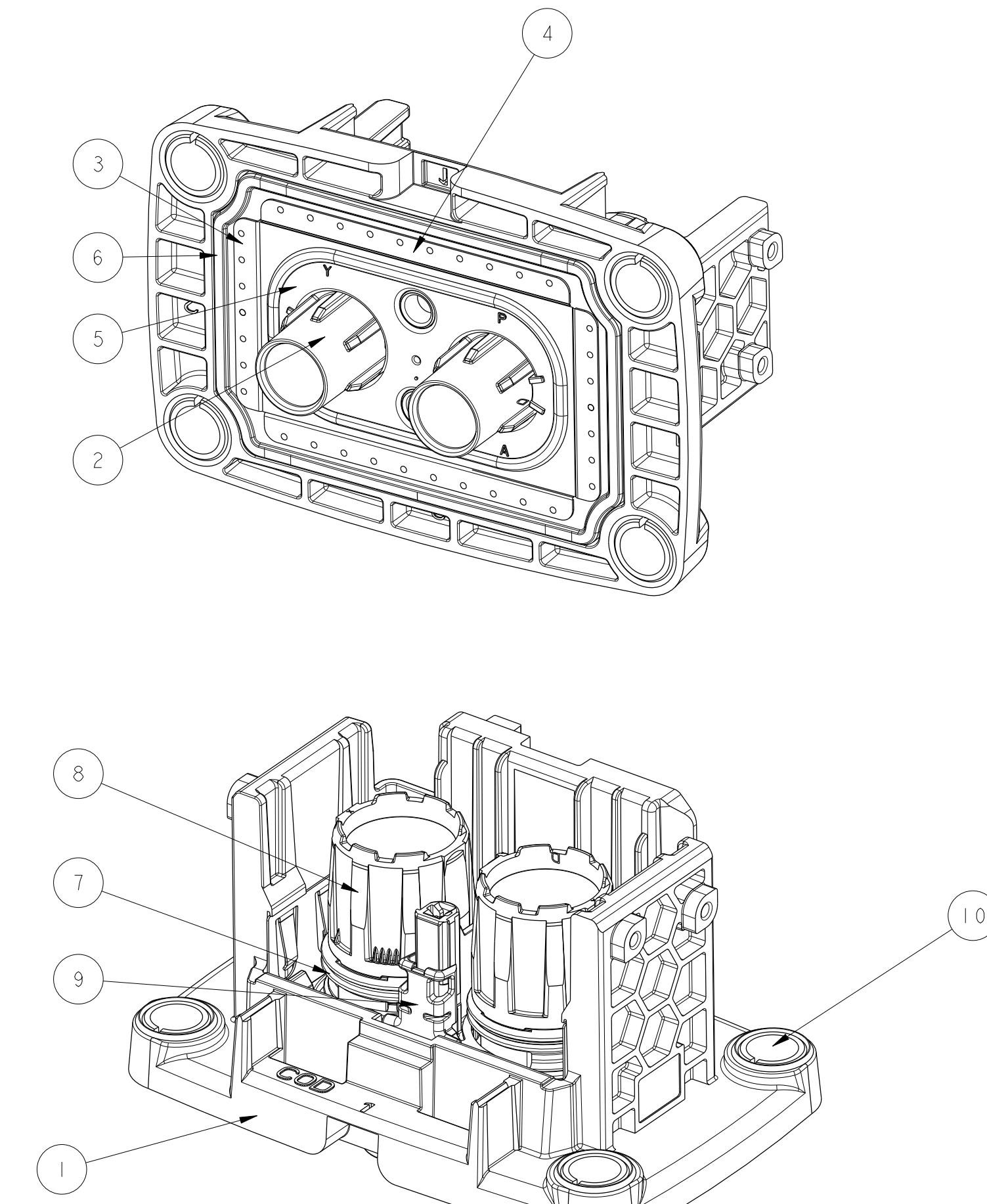
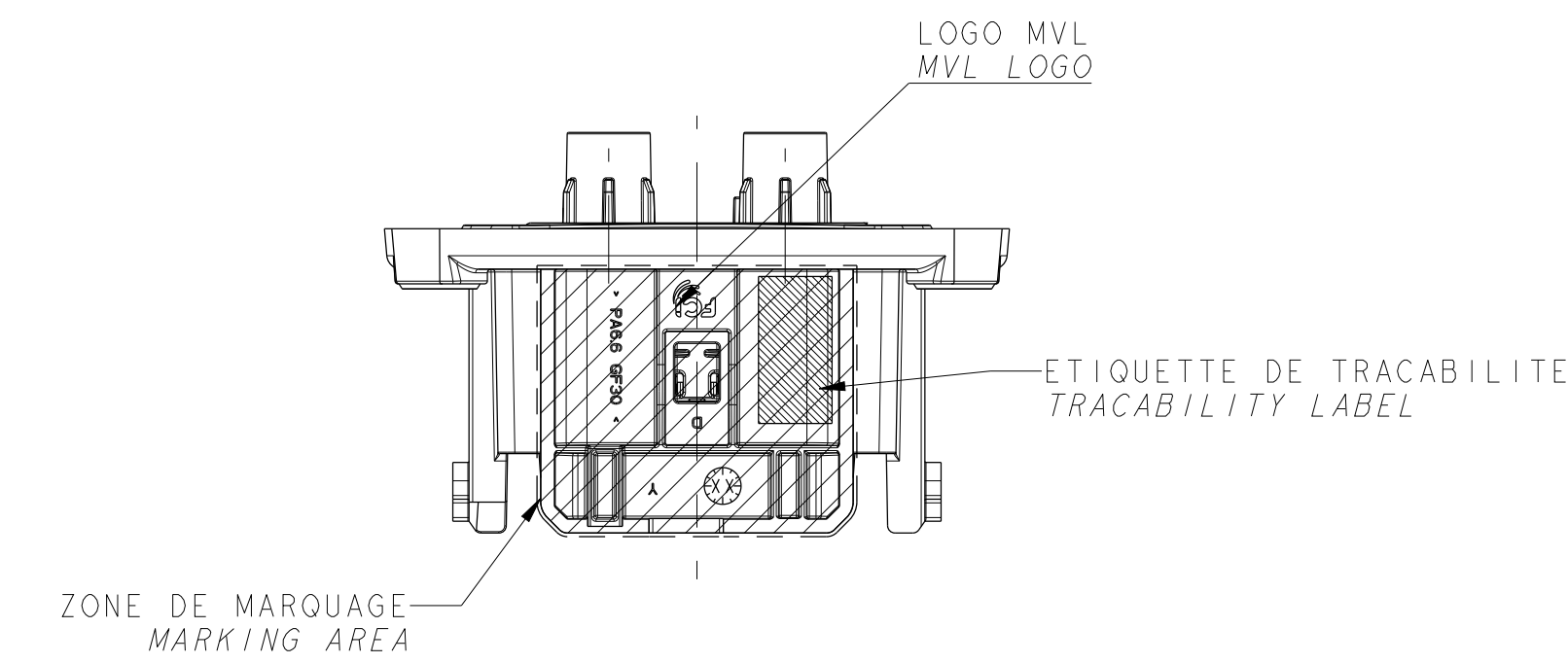
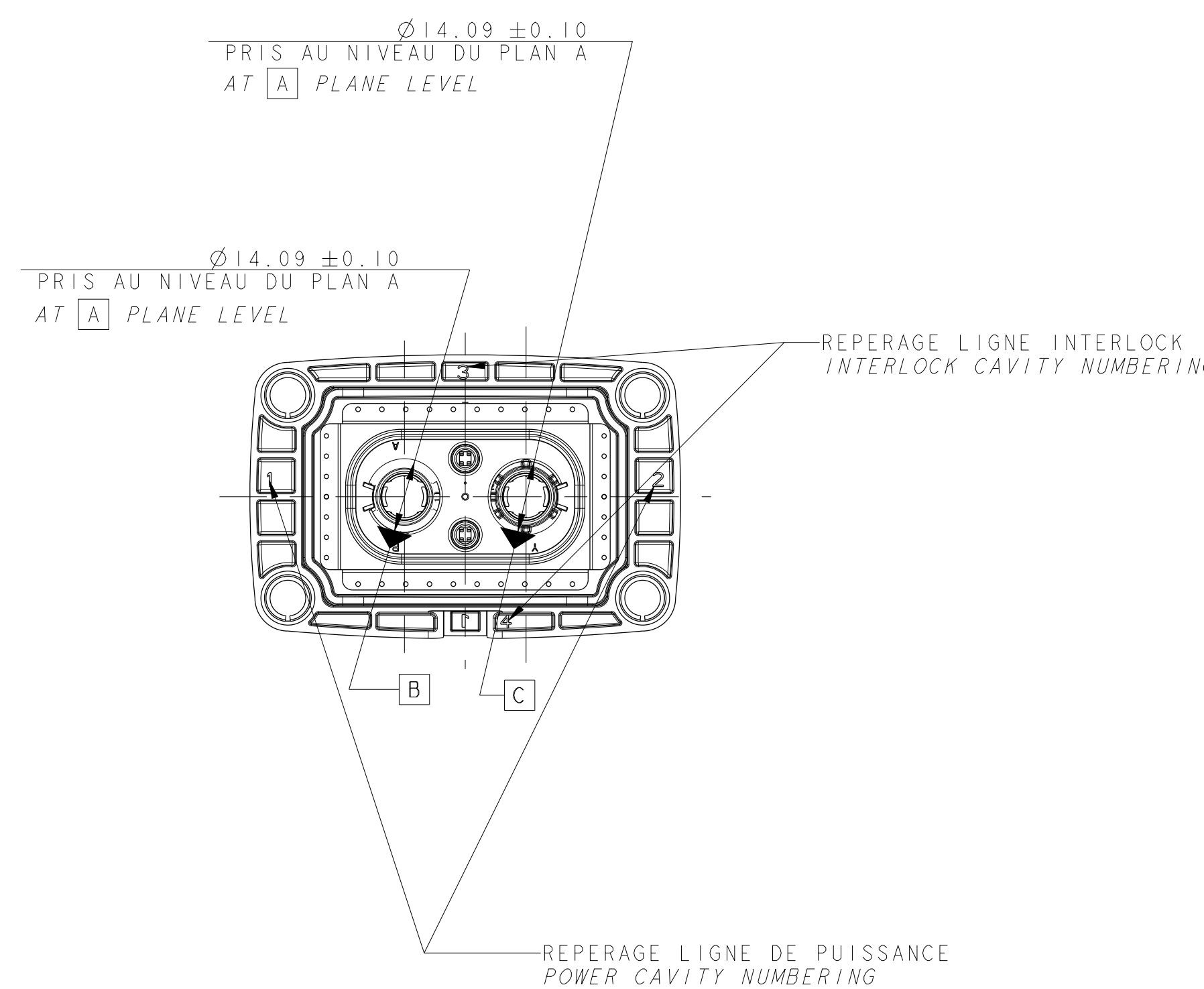
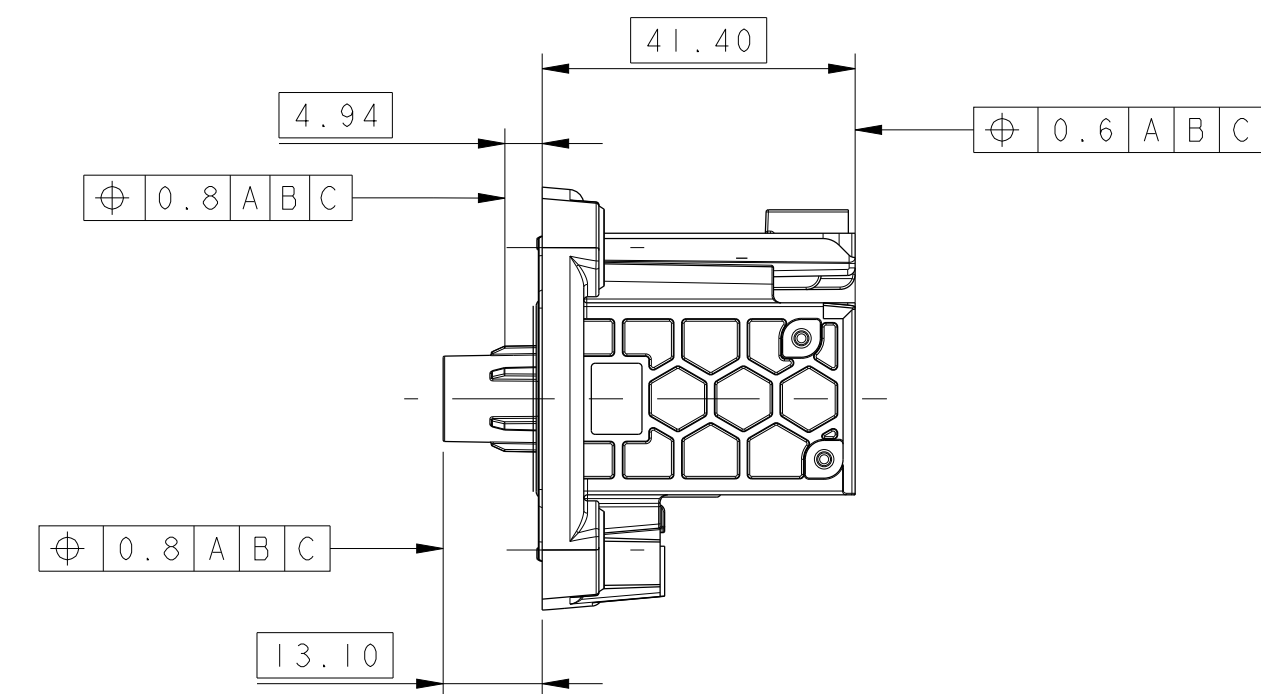
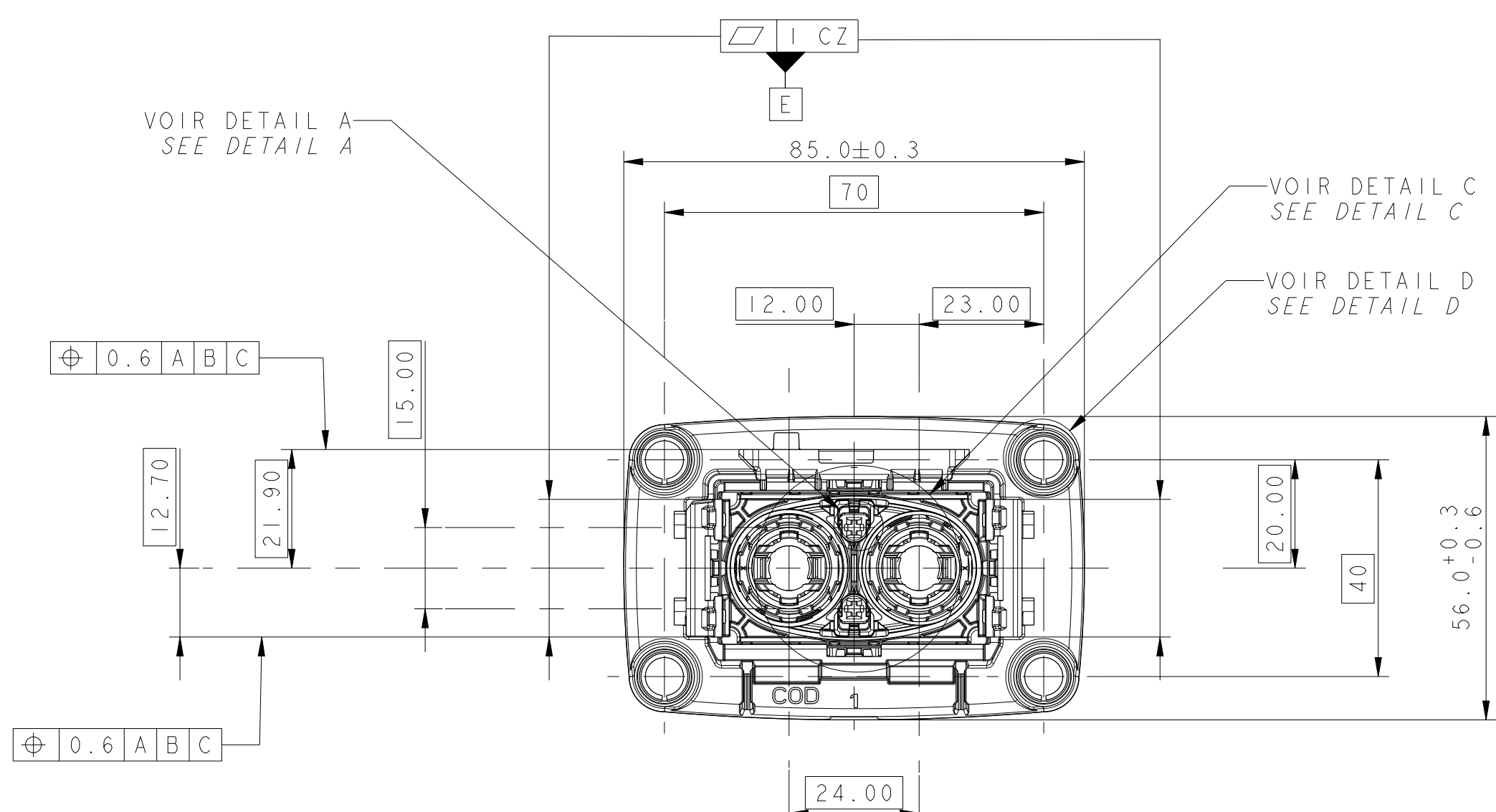
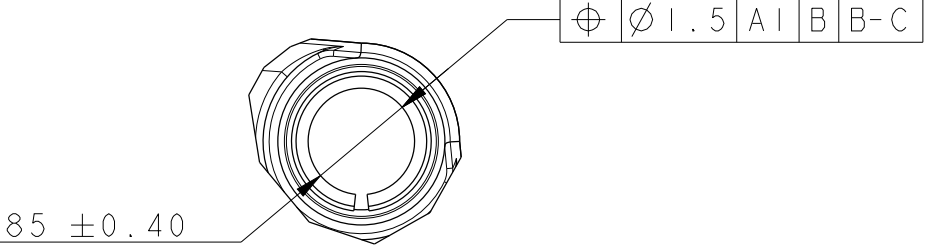
DETAIL A
ECHELLE / SCALE 5:1



DETAIL C
ECHELLE / SCALE 2:1



DETAIL D
ECHELLE / SCALE 2:1



- NOTA :
- CAHIER DES CHARGES MVL - FE PS 12 006 :
 - CLASSE DE TEMPERATURE DU CONNECTEUR : -40°C ; +125°C
 - CLASSE DE VIBRATION : PROFIL DE CAISSE (3.9G / DE 5 A 1000 HZ)
 - CLASSE D'ETANCHEITE : CONNEXION ACCOUPLEE (HORS BLINDAGE) : 1000mb INITIAL ET 500mb APRES LES TESTS D'ENVIRONNEMENT
 - EFFORT D'ACCROULEMENT : F < 85N
 - CONDITIONNEMENT : FE PA 12 003
 - DOSSIER DE MISE EN OEUVRE : PU158
 - POIDS DU PRODUIT : 0.07469 kg ±10%
 - CE PLAN EST UN EXTRAIT DES PLANS DE DEFINITIONS
 - ON FERA REFERENCE POUR TOUT LITIGE AUX PLANS DE DEFINITIONS
 - PLAN DU PORTE-CLIPS : PCC0771866
 - LE COUPLE DE SERRAGE PRECONISE PARTICIPE A UNE FONCTION SECURITAIRE D'ETANCHEITE
 - A L'ETAT LIBRE, LE DEFAUT DE CONCAVITE PEUT DEPASSER LA PLANEITE TOLERANCE JUSQU'A UNE VALEUR MAXI DE 1.5 MM
 - A L'ETAT CONTRAINT LA PLANEITE DOIT ETRE DE 0.5 mm
 - COUPLE DE SERRAGE 8Nm ±10%
 - MONTE SUR INTERFACE DECRITE EN PLANCHE 2
 - LE REVETEMENT DU BUSBAR DOIT ETRE COMPATIBLE AVEC CELUI DE LA LANGUETTE Ø8 (ARGENT)
 - AFIN D'EVITER TOUTE CORROSION GALVANIQUE
 - VISSAGE DE LA LANGUETTE Ø8 SUR BUSBAR PAR VIS M6 CLASSE 8.8 MINI SUIVANT E25-030 (COUPLE DE SERRAGE 8Nm±10%) CETTE FONCTION PARTICIPE A LA SECURITEE ELECTRIQUE
 - NIVEAU CEM INITIAL : 62dB A 100MHz / 58 dB A 150 MHz / 48 dB A 500 MHz ET 42 dB A 1000 MHz
 - NIVEAU CEM APRES VIEILLISSEMENT : 54dB A 100MHz / 51 dB A 150 MHz / 40 dB A 500 MHz ET 34 dB A 1000 MHz
 - FORCE DE FERMETURE DU TPA : 12N±3 / FORCE D'OUVRETURE DU TPA : 20N±5
 - FORCE D'EXTRACTION DU TPA : 30N MINI
 - FORCE D'EXTRACTION AXIALE DE LA CHEMINEE > 80N

- NOTE :
- MVL PRODUCT SPECIFICATIONS : FE PS 12 006 :
 - CONNECTOR TEMPERATURE CLASS : -40°C ; +125°C
 - VIBRATION CLASS : BODY PROFILE (3.9G / FROM 5 TO 1000 HZ)
 - SEALING CLASS CONNECTED WITH PLUG (WITHOUT SHIELDING) : 1000mb INITIAL 500mb AFTER TEST ENVIRONMENTAL
 - MATING FORCE : F < 85N
 - PACKAGING : FE PA 12 003
 - HANDLING MANUAL : PU158
 - MASS OF THE PRODUCT : 0.07469 kg ±10%
 - THIS DRAWING IS AN EXTRACT OF THE DETAILS DRAWINGS IN CASE OF CONFLICT REFERED TO IT
 - DRAWING FEMALE CONNECTOR : PCC0771866
 - THE PRECONIZED SCREWING TORQUE PARTICIPE TO A SECURITARY SEALING FEATURE
 - ON FREE STEP, THE FAILURE OF CONCAVITY SHALL NOT EXCEED FLATNESS TOLERANCE AT THE MAXI VALUE OF 1.5 MM
 - ON CONSTRAINT STEP, THE FLATNESS TOLERANCE NOT EXCEED 0.5 mm
 - SCREWING WITH 4 SCREWS DESCRIBE ON SHEET 2
 - SCREWING TORQUE 8Nm ±10%
 - MOUNTED ON INTERFACE DESCRIBE ON SHEET 2
 - BUSBAR PLATING MUST BE COMPATIBLE WITH M6 MALE TERMINAL PLATING (SILVER) TO AVOID GALVANIC COROSION
 - Ø8 MALE TERMINAL SCREWING ON BUSBAR WITH M6 CLASS 8.8 MINI ACCORDING TO E25-030 (SCREWING TORQUE 8Nm±10%)
 - INITIAL CEM LEVEL : 62dB AT 100MHz / 58 dB AT 150 MHz / 48 dB AT 500 MHz & 42 dB AT 1000 MHz
 - CEM LEVEL AFTER AGING : 54dB AT 100MHz / 51 dB AT 150 MHz / 40 dB AT 500 MHz AND 34 dB AT 1000 MHz
 - CLOSING TPA FORCE : 12N±3 / OPENING TPA FORCE : 20N±5 / EXTRACTION TPA FORCE : 30N MINI
 - CHIMNEY AXIAL EXTRACTION FORCE > 80N

REFERENCE DELPHI / DELPHI PART-N°	33503821 REVISION 01	33513322 REVISION 01
REFERENCE MVL / MVL PART-N°	F722210 REVISION D	F822210 REVISION D
CODAGE MECANIQUE MECHANICAL KEY	CODAGE 1 / KEY 1	CODAGE 2 / KEY 2
CODAGE CONNECTEUR SUIVANT VUE DE FACE ECHELLE: 1:1 PLUG CODING FRONT VIEW SCALE: 1:1		
CODAGE EQUIPEMENT SUIVANT VUE ARRIERE CONNECTEUR ECHELLE: 1:1 DEVICE CODING REAR CONNECTOR VIEW SCALE: 1:1		

14-10902

ET/12/12/AGB DELPHI PART-N°

DELPHI

2W RCS890 MALE CONNECTOR

2W RCS890 POWER CONNECTOR

PCC0771866

SERIAL RELEASED

See Table

X-ON Electronics

Largest Supplier of Electrical and Electronic Components

Click to view similar products for [Automotive Connectors](#) category:

Click to view products by [APTIV](#) manufacturer:

Other Similar products are found below :

[003-018-000](#) [60403001](#) [60993906-B](#) [629515004020001](#) [M902-2131](#) [M902-2161](#) [72.330.1035.1](#) [73.353.4028.0](#) [F119300-B](#) [F166900](#)
[F258300-B](#) [F358300-B](#) [F407400](#) [F444110](#) [F487000](#) [F509500B-B](#) [827153-1](#) [8N1515-32-24P](#) [9-1326729-8](#) [925474-1](#) [928905-1](#) [964562-4](#)
[968782-1](#) [GT17SA-8DS-HU](#) [98891-1012](#) [98947-1016](#) [12004475-L](#) [12010290](#) [12010309-B](#) [12015454](#) [12020219-B](#) [12020308](#) [12041318-B](#)
[12052225-L](#) [12052466](#) [12059125](#) [12064869](#) [12004327-B](#) [12010503-B](#) [12015308](#) [12015384](#) [12015909](#) [1-21030-1](#) [12041254](#) [12041318](#)
[12047946-B](#) [12047957](#) [12047957-L](#) [12059473](#) [12066261](#)