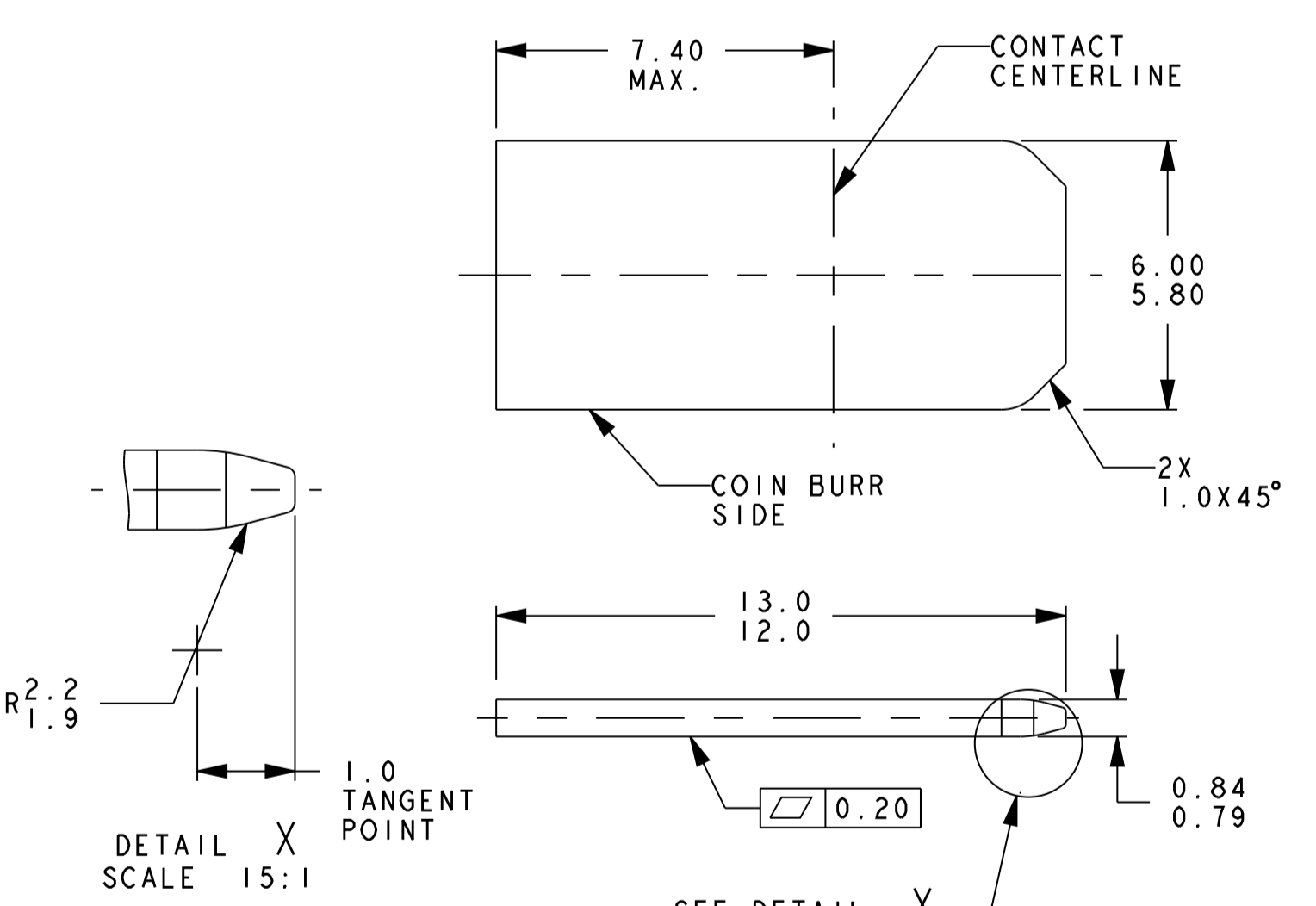


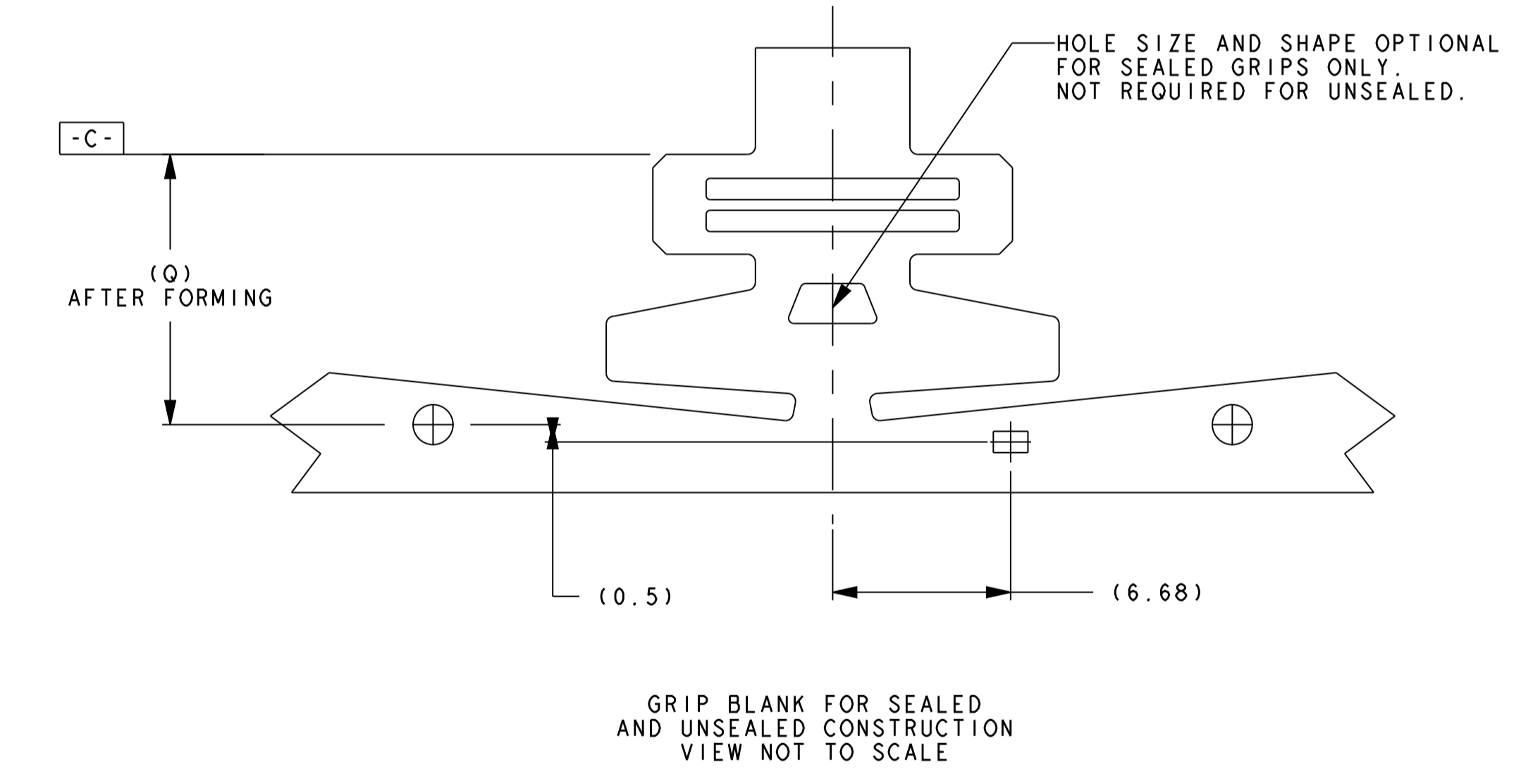
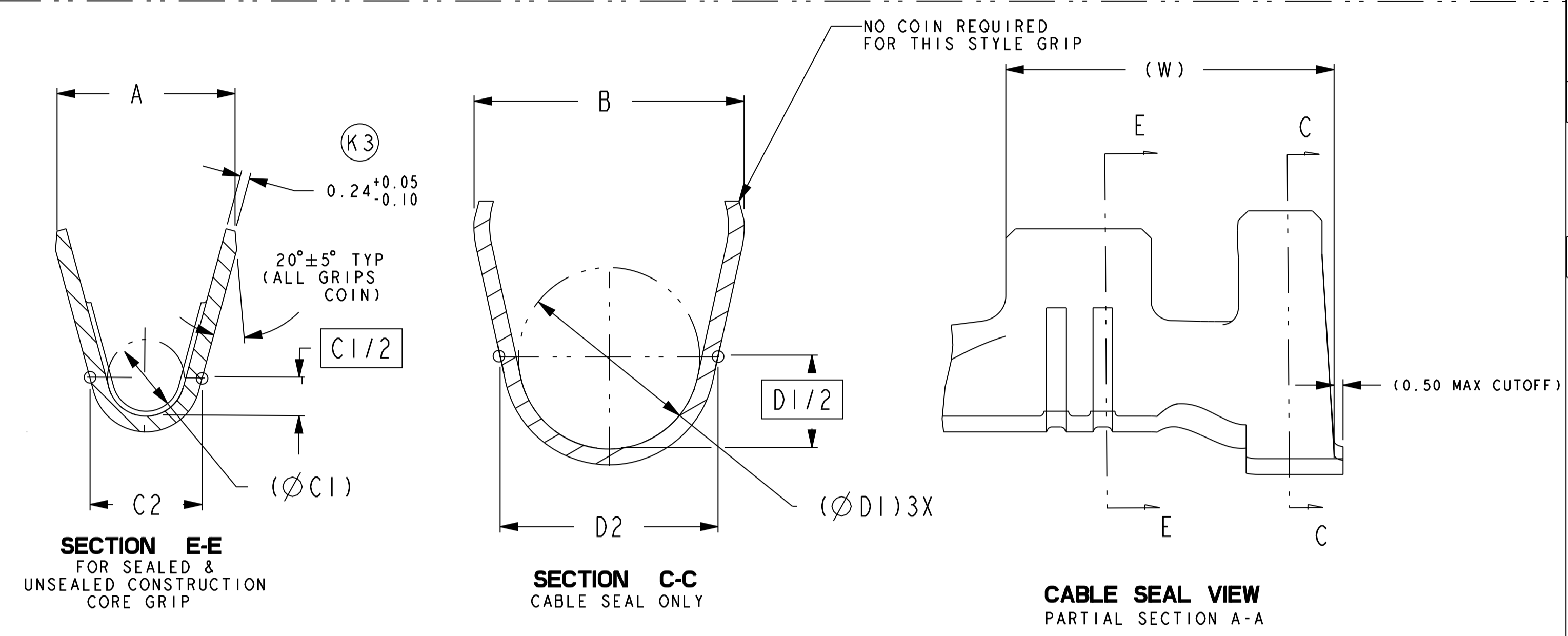
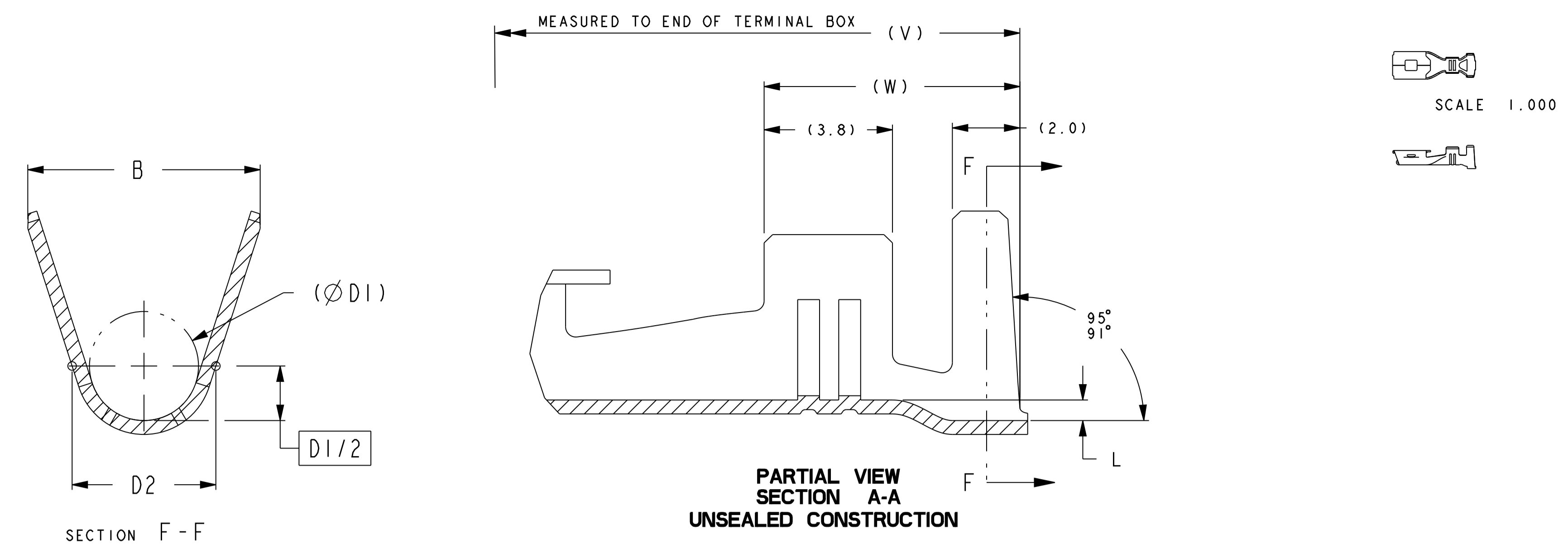
TERMINALS TO FEED AS SHOWN AFTER BEING REELED OFF PRODUCTION TOOL.  
 PACKAGING: PANCAKE REELS WITH PAPER INTERLEAF  
 NOTE: CUSTOMER REQUESTS FOR REWIND PARTS WILL INCLUDE AN "RW" AT THE END OF THE BILL OF MATERIAL (B.O.M.) PART NUMBER. EXAMPLE:  
 STANDARD WIND: FCI PART NUMBER  
 REVERSE WIND: FCI PART NUMBER THEN RWA.  
 THIS PART NUMBERING SYSTEM WILL BE AVAILABLE FOR ALL CHARTED PART NUMBERS.

**REELING OPTIONS**

**MATING BLADE VIEW**



MATERIAL: COPPER ALLOY 50% MIN I.A.C.S TIN PLATED



- NOTES:
- INDICATES SPC DIMENSION (2)
  - INDICATES CRITICAL INSPECTION DIMENSION (3)
  - MEETS ALL ES-F8DB-14A464-AA TEST SPECIFICATIONS.
  - TERMINAL SYMMETRICAL ABOUT CENTRELINE EXCEPT AS SHOWN.
  - DIMENSIONAL TOLERANCE:  
 1 PLACE ±0.30  
 2 PLACE ±0.13  
 ANGULAR ±2°
  - PARTS CONFORM TO THE ELECTRICAL CONNECTION SUBSYSTEM DESIGN SPECIFICATION (SDS) REV 1.4 DATED 1-28-97 EXCEPT:  
 EL-0070-TERMINAL PLATING MARK NOT SHOWN
  - FOR CAVITY SPECIFICATION INFORMATION REFERENCE FCI DRAWING NUMBER A25009
  - PART MUST COMPLY WITH AVPT(A04/T406)

ITEM ①  
 MATERIAL: 0.398±0.013 C194 COPPER ALLOY TO ASTM B-465  
 100% HALT TIN PLATED 0.0013/0.0038 THICK  
 TENSILE STRENGTH: 413-483 Mpa  
 YIELD STRENGTH: 379 Mpa MIN.  
 ELONGATION IN 51MM: 2%MIN.

ITEM ②  
 MATERIAL: 0.254 ±0.010 C70260 TM04 COPPER TO ASTM B-422  
 100% HALT TIN OR 95/5 TIN SILVER PLATED 0.0013/0.0038 THICK  
 TENSILE STRENGTH: 689-862 Mpa  
 YIELD STRENGTH: 689 Mpa MIN.  
 ELONGATION IN 51MM: 1%MIN.

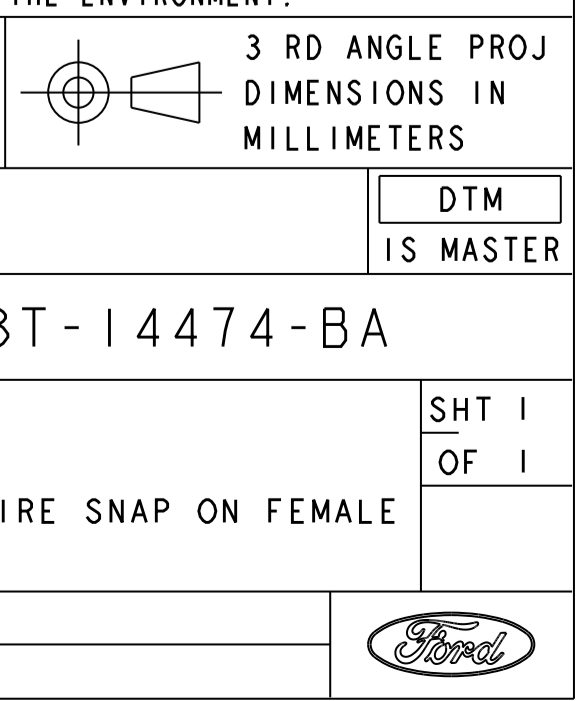
| FORD PART NO.                 | GREASE   | GRIP CODE | WIRE SIZE METRIC | WIRE SIZE AWG | CONDUCTOR   |              | INSULATION  |              | CABLE SEAL P/N |
|-------------------------------|----------|-----------|------------------|---------------|-------------|--------------|-------------|--------------|----------------|
|                               |          |           |                  |               | CRIMP WIDTH | CRIMP HEIGHT | CRIMP WIDTH | CRIMP HEIGHT |                |
| DUST-14474-TA (F286010)       | N/A      | 16        | 0.75             | 18            | 2.80        | 1.50         | 2.40        | N/A          |                |
| BUST-14474-RAA (F560310)      | NYE-8917 |           | 1.00             | ---           |             | 1.55         | 2.60        |              |                |
|                               |          |           | 1.25             | 16            |             | 1.60         | 2.80        |              |                |
| CUST-14474-RA (F409110)       | N/A      | 12        | 2.50             | ---           | 3.10        | 2.05         | 3.80        | 3.30         |                |
| BUST-14474-PAA (F660310)      | NYE-8917 |           |                  |               |             |              |             |              |                |
| IL5T-14474-AA (S4001200)      |          | 12        | 2.0              | 14            | 3.10        | 1.95         | 5.10        | 4.90         |                |
|                               |          |           | 3.0              | 12            |             | 2.05         | 5.10        |              |                |
| AUST-14474-DAA (FCI: F803600) | NYE-8917 |           | 2.0              | 14            |             | 1.95         | 5.10        |              |                |
|                               |          | 10        | 3.0              | 12            | 3.85        | 2.05         | 5.10        | 5.60         |                |
|                               |          |           | 4.0              | ---           |             | 2.35         | 6.10        |              |                |
| XL3T-14474-BA (FCI: 54001004) |          |           | 5.0              | 10            |             | 2.45         | 5.70        |              |                |
|                               |          | 10        | 6.0              | ---           | 3.85        | 2.60         | 5.90        | 5.60         |                |
| 4L3T-14474-BA (FCI: 54001021) | NYE-8917 |           | 4.0              | ---           |             | 2.35         | 6.10        |              |                |
|                               |          |           | 5.0              | 10            |             | 2.45         | 5.70        |              |                |
|                               |          | 10        | 6.0              | ---           | 3.85        | 2.60         | 5.90        | 4.35         |                |
| YFIT-14474-BA (FCI: 54001007) | N/A      |           | 4.0              | ---           |             | 2.35         | 4.35        |              |                |
| BUST-14474-SAA (FCI: F760310) | NYE-8917 |           | 5.0              | 10            |             | 2.45         | 4.60        |              |                |
|                               |          | 10        | 6.0              | ---           | 3.85        | 2.60         | 4.70        | N/A          |                |
|                               |          |           |                  |               |             |              |             |              |                |

USE XL3T-14603-BA FOR HEAVY WALL APPLICATIONS. (3.8-4.7 INSULATION O.D.)  
 USE IL5T-14603-BA FOR THIN WALL APPLICATIONS. (3.10-4.10 INSULATION O.D.)

| A   | B   | (ØC1) | C2  | (ØD1) | D2  | L   | (O)   | (V)  | (W) | CABLE SEAL | WIRE CODE | FORD PART NO.                   |
|-----|-----|-------|-----|-------|-----|-----|-------|------|-----|------------|-----------|---------------------------------|
| 3.5 | 4.2 | 1.2   | 1.9 | 2.0   | 2.9 | 0.4 | 10.85 | 23.4 | 7.5 | NO         | 16        | DUST-14474-TA<br>BUST-14474-RAA |
| 5.6 | 8.8 | 2.4   | 3.4 | 5.4   | 6.5 | 1.1 | 10.50 | 24.0 | 8.0 | YES        | 10        | XL3T-14474-BA<br>4L3T-14474-BA  |
| 4.6 | 4.9 | 2.0   | 2.9 | 2.8   | 3.8 | 0.4 | 10.85 | 23.4 | 7.5 | NO         | 12        | CUST-14474-RA<br>BUST-14474-PAA |
| 4.6 | 6.9 | 2.0   | 2.9 | 4.6   | 5.6 | 0.6 | 10.50 | 24.0 | 8.0 | YES        | 12        | IL5T-14474-AA<br>AUST-14474-DAA |
| 5.6 | 6.8 | 2.4   | 3.4 | 3.2   | 4.2 | 0.4 | 10.85 | 23.4 | 7.5 | NO         | 10        | YFIT-14474-BA<br>BUST-14474-SAA |

| REF | DESCRIPTION                                | DATE     | BY |
|-----|--|----------|----|
| 1   | ISSUED FOR PRODUCTION                      | 20080429 | RR |
| 2   | REVISED FOR CABLE SEAL P/N                 | 20090903 | RR |
| 3   | REVISED FOR UNSEALED CONSTRUCTION          | 20100602 | RR |
| 4   | REVISED FOR SEaled & UNSEALED CONSTRUCTION | 20110812 | RR |

| LTRS       |         | REVISIONS |          |                                       |
|------------|---------|-----------|----------|---------------------------------------|
| ORIGINATOR | CHECKER | ENG APP   | MATL APP |                                       |
| MI         | RR      |           |          | DATE: 20080429<br>AELE-E-11786306-070 |
| NI         | RR      |           |          | DATE: 20090903<br>AELE-E-11786306-108 |
| PI         | RR      |           |          | DATE: 20100602<br>AELE-E-11786306-127 |
| RI         | RR      |           |          | DATE: 20110308<br>AELE-E-11786306-145 |
| SI         | RR      |           |          | DATE: 20110812<br>AELE-E-11786306-160 |
| TI         | RR      |           |          | DATE: 20110812<br>AELE-E-11786306-168 |



DRW SIZE A0

## X-ON Electronics

Largest Supplier of Electrical and Electronic Components

*Click to view similar products for [Automotive Connectors](#) category:*

*Click to view products by [APTIV](#) manufacturer:*

Other Similar products are found below :

[003-018-000](#) [60403001](#) [60993906-B](#) [629515004020001](#) [M902-2131](#) [M902-2161](#) [72.330.1035.1](#) [73.353.4028.0](#) [F119300-B](#) [F166900](#)  
[F258300-B](#) [F358300-B](#) [F407400](#) [F444110](#) [F487000](#) [F509500B-B](#) [827153-1](#) [8N1515-32-24P](#) [9-1326729-8](#) [925474-1](#) [928905-1](#) [964562-4](#)  
[968782-1](#) [GT17SA-8DS-HU](#) [98891-1012](#) [98947-1016](#) [12004475-L](#) [12010290](#) [12010309-B](#) [12015454](#) [12020219-B](#) [12020308](#) [12041318-B](#)  
[12052225-L](#) [12052466](#) [12059125](#) [12064869](#) [12004327-B](#) [12010503-B](#) [12015308](#) [12015384](#) [12015909](#) [1-21030-1](#) [12041254](#) [12041318](#)  
[12047946-B](#) [12047957](#) [12047957-L](#) [12059473](#) [12066261](#)