

FEATURES

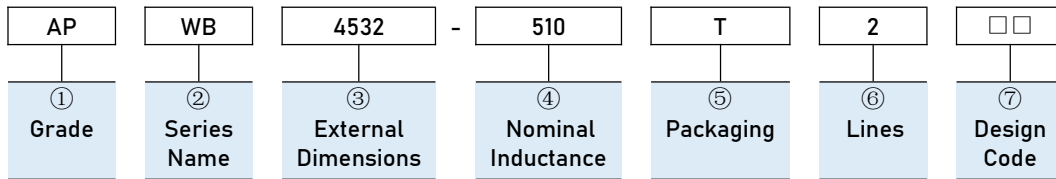
- Winding type realizes small size and low profile.
- Prevention of common mode noise at high frequency.
- Excellent solderability.
- Operating Temperature: -40℃~+85℃ .
- RoHS, Halogen Free and REACH Compliance.



APPLICATIONS

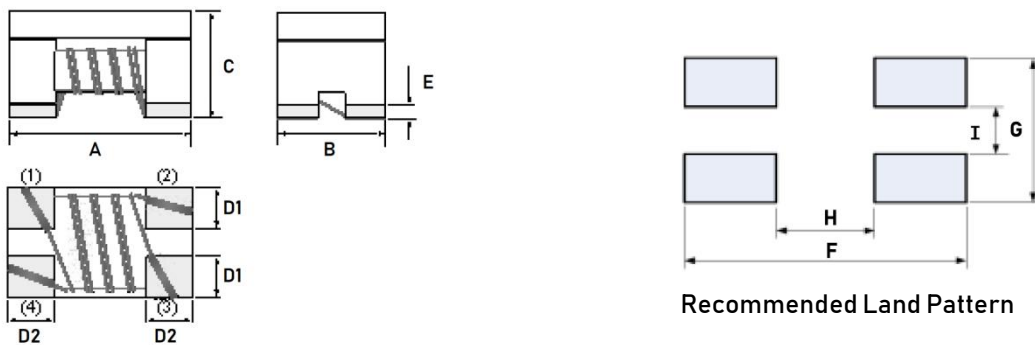
- Multimedia system.
- Facsimiles, Modems, Household Appliances, etc.

PART NUMBERING



① Grade		② Series Name		③ External Dimensions	
AP	Grade Code	WB	Winding Type Common Mode Choke Coil	3225 [1210] 4532[1812]	
⑤ Packaging		④ Nominal Inductance		⑥ Number of Lines	
T	Tape & Reel	Code (example)	Nominal Inductance [μH]	2	
		110	11		
		510	51		
		201	200		
		⑦ Design Code			
		□□	Standard product is blank		

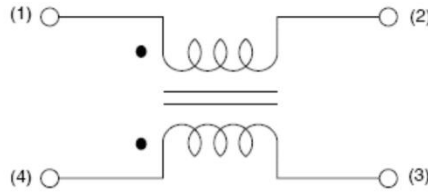
DIMENSIONS & RECOMMENDED LAND PATTERN



Unit: mm

Series	Dimensions						Recommended Land Pattern			
	A	B	C	E	D1 Typ.	D2 Typ.	F Typ.	G Typ.	I Typ.	H Typ.
APWB3225	3.2±0.2	2.5±0.2	2.1±0.2	0.2±0.1	0.8	0.9	4	2.5	0.9	2.2
APWB4532	4.5±0.2	3.2±0.2	2.8±0.2	0.2±0.1	1	1.2	5.10	3.6	1.05	3.4

EQUIVALENT CIRCUIT



ELECTRICAL CHARACTERISTICS

● APWB3225 Series

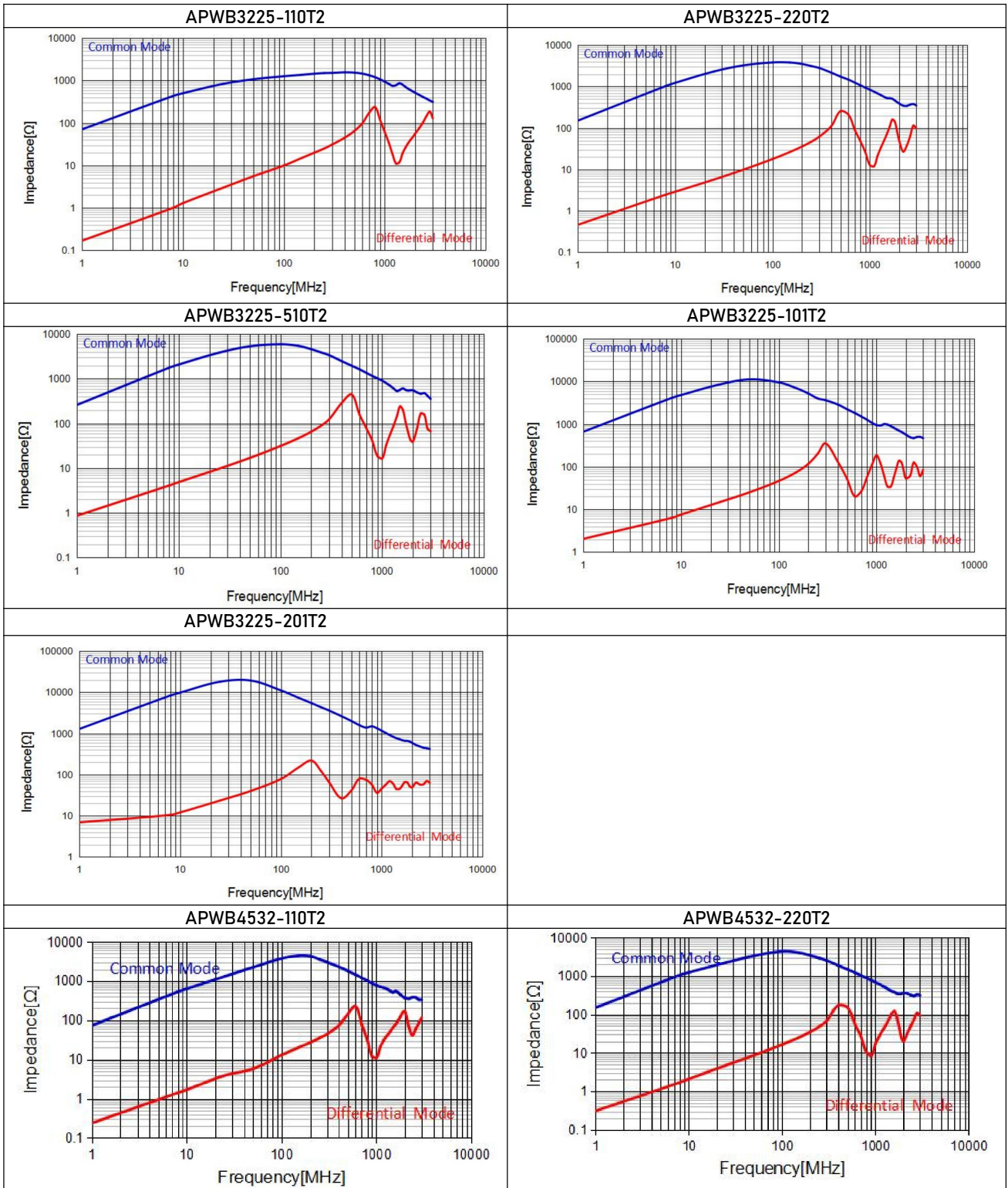
Part Number	Inductance	Heat Rating Current Max.	Rated Voltage	Test Freq.	DC Resistance Max.	Insulation Resistance Min.
Units	μH	mA	Volts	KHz/V	Ω	MΩ
Symbol	L(+50%/-30%)	I _{rms}	VDC	Freq.	DCR	IR
APWB3225-110T2	11	400	80	100/0.1	0.4	10
APWB3225-220T2	22	300	80	100/0.1	0.5	10
APWB3225-510T2	51	200	80	100/0.1	0.7	10
APWB3225-101T2	100	150	80	100/0.1	1.5	10
APWB3225-201T2	200	70	80	100/0.1	4.8	10

● APWB4532 Series

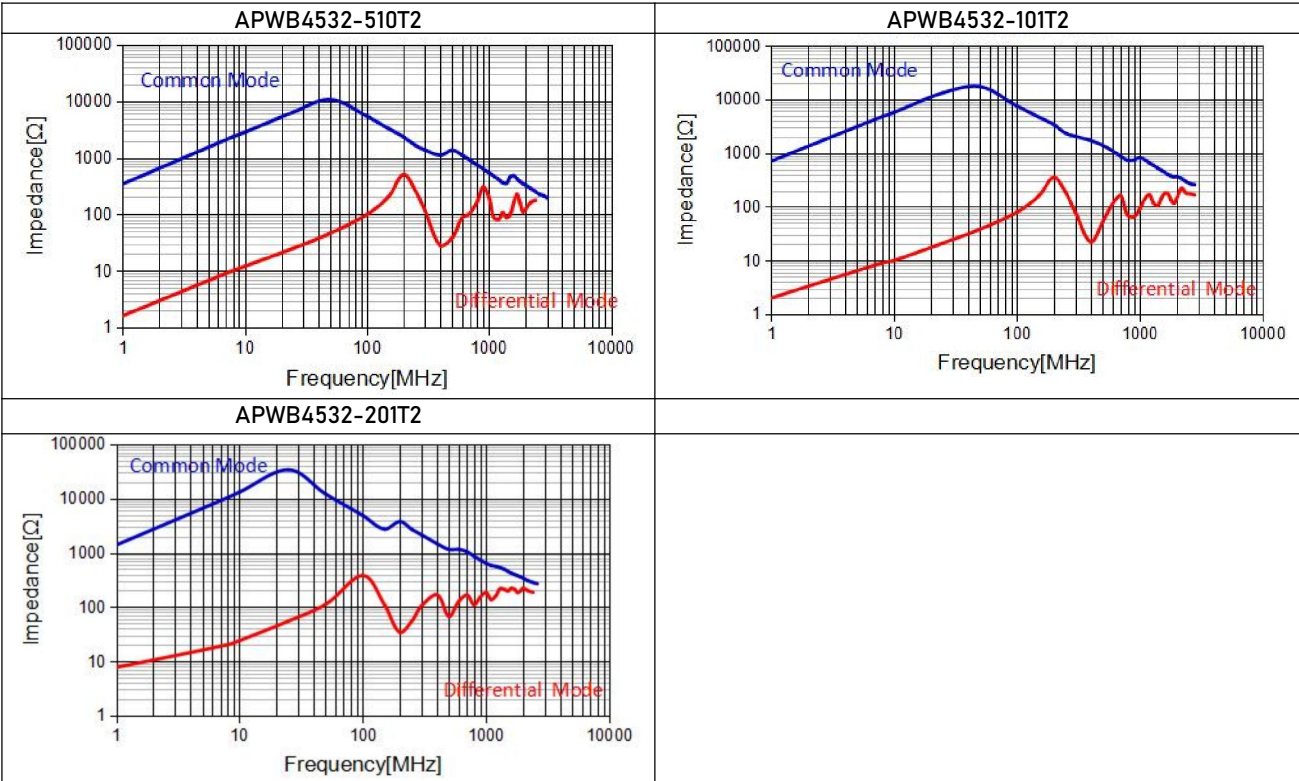
Part Number	Inductance	Heat Rating Current Max.	Rated Voltage	Test Freq.	DC Resistance Max.	Insulation Resistance Min.
Units	μH	mA	Volts	KHz/V	Ω	MΩ
Symbol	L(+50%/-30%)	I _{rms}	VDC	Freq.	DCR	IR
APWB4532-110T2	11	360	50	100/0.1	0.6	10
APWB4532-220T2	22	310	50	100/0.1	1.0	10
APWB4532-510T2	51	230	50	100/0.1	1.0	10
APWB4532-101T2	100	200	50	100/0.1	2.0	10
APWB4532-201T2	200	100	50	100/0.1	4.5	10

- Rating DC current: Temperature rise(ΔT) is 40 °C approximately at I_{rms}.
- Storage temp.: -10 °C ~ +40 °C R.H.: 65% Max.
- Moisture sensitivity level (MSL) : 2

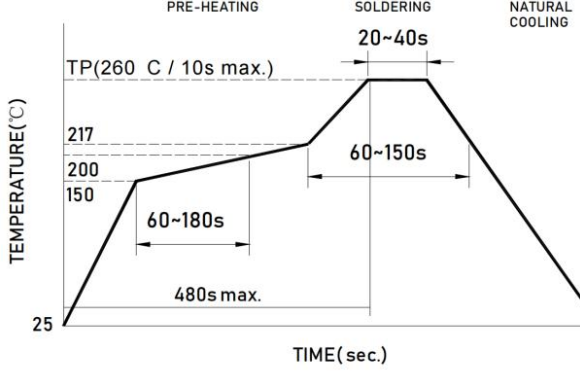
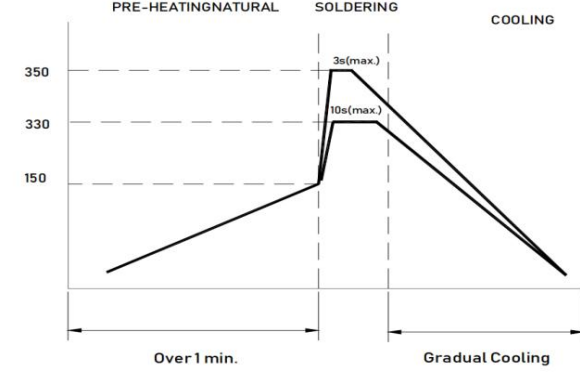
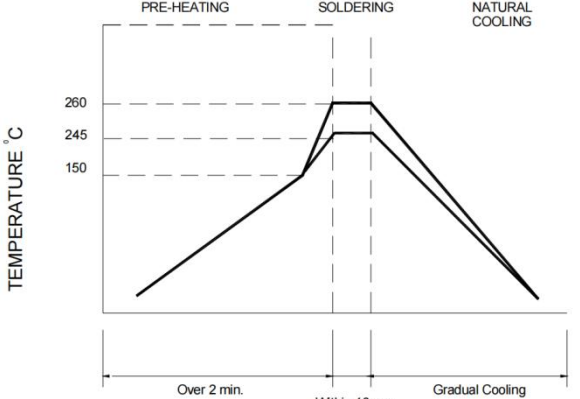
ELECTRICAL CHARACTERISTIC CURVE



ELECTRICAL CHARACTERISTIC CURVE



SOLDERING CONDITIONS

<p>Re-flow Soldering</p> <ul style="list-style-type: none"> ● Preheat circuit and products to 150 °C ● 260 °C tip temperature (max) ● Reflow times: no more than 2 times ● Solder paste thickness: the best 0.08mm is ,but max is 0.1mm 	 <p>The graph shows a temperature profile for re-flow soldering. The y-axis is Temperature (°C) with markers at 25, 150, 200, 217, and TP(260 C / 10s max.). The x-axis is Time (sec.) with markers for 60~180s, 480s max., 60~150s, 20~40s, and 60~180s. The profile is divided into three phases: PRE-HEATING (ramp up to 200°C), SOLDERING (ramp up to 260°C, dwell at 260°C for 10s max., then ramp down), and NATURAL COOLING (ramp down from 200°C).</p>
<p>Hand Soldering</p> <ul style="list-style-type: none"> ● Use a 20 watt soldering iron with tip diameter of 1.0mm. ● Limit soldering time to 3 sec. 	 <p>The graph shows a temperature profile for hand soldering. The y-axis is Temperature (°C) with markers at 150, 330, and 350. The x-axis is Time (sec.) with markers for Over 1 min., 3s(max), 10s(max), and Gradual Cooling. The profile is divided into three phases: PRE-HEATING (ramp up to 150°C), SOLDERING (ramp up to 350°C, dwell at 350°C for 3s max., then ramp down to 330°C, dwell at 330°C for 10s max., then ramp down), and NATURAL COOLING (ramp down from 330°C).</p>
<p>Wave Soldering</p> <ul style="list-style-type: none"> ● Never contact the ceramic with the iron tip. ● 1.0mm tip diameter (max). 	 <p>The graph shows a temperature profile for wave soldering. The y-axis is Temperature (°C) with markers at 150, 245, and 260. The x-axis is Time (sec.) with markers for Over 2 min., Within 10 sec., and Gradual Cooling. The profile is divided into three phases: PRE-HEATING (ramp up to 150°C), SOLDERING (ramp up to 260°C, dwell at 260°C for 10s max., then ramp down to 245°C, dwell at 245°C for 10s max., then ramp down), and NATURAL COOLING (ramp down from 245°C).</p>

Note:
This series product is not applies in automotive or related products. Otherwise, we will shall not bear than the resulting all the problems of quality and responsibility.

Please be sure to request approval specifications that provide further details of the products. Kindly not that the content of these specifications are subject to change or may be discontinued without prior notice. This product may not be designed/used in medical or high risk applications without APV approval.

X-ON Electronics

Largest Supplier of Electrical and Electronic Components

Click to view similar products for [Common Mode Chokes / Filters](#) category:

Click to view products by [APV](#) manufacturer:

Other Similar products are found below :

[PE-64683](#) [RD5122-6-9M6](#) [RD6137-6-7M5](#) [RD8147-16-3M0](#) [ST6118T-R](#) [FE3X025-10-7NL](#) [RD7147-25-0M7](#) [TCM0806G-350-2P-T](#)
[TCM0806G-650-2P-T](#) [IND-0110](#) [UAL21VR0802000](#) [UALSC023000000](#) [UALSC1020JH000](#) [UALSU10VD20010](#) [UALSU9VD070100](#) [36-00037](#) [UALW21HS072450](#) [UALSU9H0208000](#) [UAL24VK06450CH](#) [PLT10HH501100PNB](#) [PLT10HH401100PNB](#) [PLT10HH1026R0PNB](#)
[36-00029-01](#) [PE-67531](#) [TLH10UB](#) [113 0R5](#) [2752045447](#) [7351V](#) [CMF16-153131](#) [RD7147-6-6M0](#) [T8116NLT](#) [FE2X10-4-2NL](#) [36-00029-07](#)
[T8003NLT](#) [CTX01-13663](#) [CTX66-19521-R](#) [RC212-0.5-10M](#) [RC112-0.4-15M](#) [RC212-0.6-6M8](#) [RC212-0.4-15M](#) [RC112-0.3-30M](#)
[WTCF2012Z0M751PB](#) [PH9408.814NLT](#) [PAC6006.364NLT](#) [PAC6006.444NLT](#) [PAC6006.204NLT](#) [PH9407.204NLT](#) [PAC6006.264NLT](#)
[PH9408.105NLT](#) [PH9408.494NLT](#) [PAC6006.104NLT](#)