

ARES-5300 series

Programmable Embedded Controller with Intel® Atom® E3845 processor



Features

- Fanless, Cable-less and Modularized Design
- Wide Range DC Power Input (9 ~ 36V)
- RS-485 Auto-flow Control Supported
- Easy Installation/Maintenance
- Outside accessible CFast Slot

System

CPU	Soldered onboard Intel® Atom™ E3845 1.9GHz processor
Memory	2GB DDR3L SO-DIMM RAM module installed
Graphics	Integrated in Intel® Core
LAN Chipset	2 x Intel i210AT PCIe GbE controllers
Watchdog Timer	1~255 level reset

I/O

Super IO chipset	Fintek F81866
Serial Port	4 x RS-485 ports in the 2x10-pin terminal block (for ARES-5300 only)
Digital IO	8-bit programmable Digital Input/ Output in the 2x10-pin terminal block (for ARES-5300 only)
USB 2.0 Port	4 x USB type A connectors (External) 1 x USB type A connector (Internal)
LAN	2 x RJ-45 Gigabit Ethernet ports
Video Port	1 x DVI/ VGA connector for DVI-D/Analog RGB
KB/MS	USB interface Keyboard/ Mouse via Y-cable
Expansion Bus	1 x Half size Mini-Card socket

Environmental

Operating Temp.	-30 ~ 60°C (-22 ~ 140°F), ambient with air flow
Storage Temp.	-40 ~ 85°C (-40 ~ 185°F)
Relative Humidity	10 ~ 95% @ 60°C (non-condensing)
Vibration	5~500Hz 3G rms X,Y,Z axis w/SSD, according to IEC 68-2-64 40G peak acceleration (11 m sec. duration), operation
Shock & Crash	60G peak acceleration (11 m sec. duration), non operation According to IEC 68-2-27

Qualification

Certification	CE, FCC Class A
----------------------	-----------------

Power Requirement

Power Input	DC 9~36V input (w/ 2-pin DC input terminal block combine remote power on/off switch)
Power Consumption	TBD

Storage

Type	1 x mSATA socket 1 x Outside accessible CFast slot
-------------	---

Mechanical

Construction	Aluminum alloy
Mounting	DIN Rail quick release mounting kit and can allow to rotate by 90 degrees
Weight	1555g
Dimensions (WxDxH)	170 x 127 x 70mm

Ordering Information

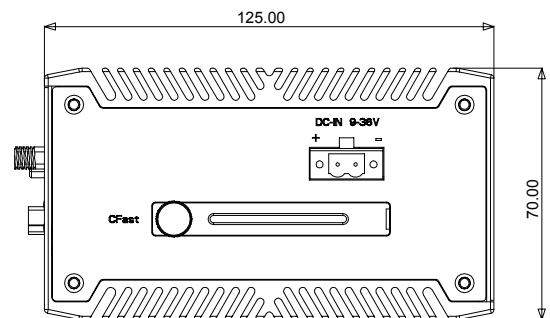
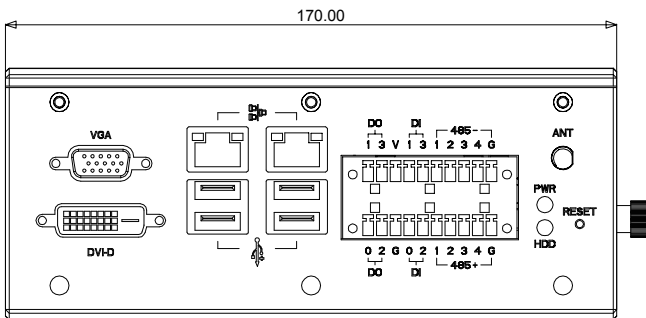
ARES-5300-E3845	ARES-5300 programmable Embedded Controller w/ Intel Atom® E3845
ARES-5300E-E3845 (BTO)	ARES-5300 programmable Embedded Controller w/ Intel Atom® E3845, without DIO & Serial ports

DIN Rail Mount



All specifications are subject to change without notice.

Dimensions



Unit: mm

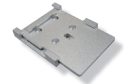
Standard Accessories

DRK-5300

Din rail mounting kit for EPC-5300 Series

SPCC+Ni, Al6063

Din Rail 35 mm



Optional Configuration (CTOS * Kit)

PAC-B065W-1

65W AC/DC adapter kit

19VDC, 3.4A, 65W AC/DC adapter kit



WIFI-IN1300

Intel Centrino Advanced-N 6205 WiFi module w/ 20cm internal wiring



ANT-H11

1 x 2dBi HSUPA antenna



ANT-D11

1 x WiFi Dual-band 2.4G/5G antenna



MM-3L-2G

DDR3L-1333 4GB SDRAM



MM-3L-4G

DDR3L-1333 2GB SDRAM



16GB SSD

mSATA MLC 16GB



32GB SSD

mSATA MLC 32GB

*CTOS means *Configure to Order Service*.

All specifications are subject to change without notice.

X-ON Electronics

Largest Supplier of Electrical and Electronic Components

Click to view similar products for [Embedded Box Computers](#) category:

Click to view products by [Arbor Technology](#) manufacturer:

Other Similar products are found below :

[tBOX312-870-FL-i7-DC](#) [tBOX313-835-FL-RJ-DC](#) [UPOS-3150-R0W0E](#) [ARK-20-S8A1E](#) [R2224WTTYSR](#) [BXNUC9i5QNX](#)
[BXNUC9i5QNX1](#) [BKNUC9V7QNX](#) [BKNUC9V7QNX1](#) [2-A0DF-2001](#) [EM3000-3845-8-128-WL-U-1](#) [TANK-870AI-i5/8G/2A-R10](#)
[PRFE21000038](#) [EM5000-I3-8-128-WL-W7-1](#) [EM3000-3845-8-128-WL-W7-1](#) [PRFE21000039](#) [AMOS-825-1Q10A1](#) [UPS-EDAI-X70864-](#)
[U01-DC01](#) [MXE-211/M8G](#) [PXIe-3985/M16G](#) [PXIe-3987/M16G/SSD](#) [ROScube-I, IntelR Core? i7, RQI-57](#) [AIMB-T1215DA-00Y0E](#) [AIMB-](#)
[T1217DW-00Y0E](#) [AIMB-T12315A-00Y0E](#) [AMAX-5580-74000A](#) [AMAX-5580-54000A](#) [AMAX-5580-C3000A](#) [APAX-5580-474AE](#) [ARK-](#)
[6322-Q0A2E](#) [DS-100GF-S8A1E](#) [DS-100GL-S8A1E](#) [EPC-R4680CQ-XAA1E](#) [ESRP-CSS-UNO2484](#) [ITA-1611-10A1E](#) [ITA-1711-10A1E](#)
[UNO-247-J1N1AE](#) [UTX-3115FS-S6A2E](#) [AMI220AF-4L-7500](#) [AMI220AF-4L-7700](#) [ELIT-1200](#) [AIE100-903-FL](#) [EBOX671-517-FL-DC](#)
[MVS900-511-FL](#) [AMS200](#) [CSB200-898-IT](#) [SE-92-I7](#) [SI-606](#) [SI-60E](#) [ITG-100-AL-E1/2GB/S-R10](#)