

ARCA Enclosures

Product presentation

High Performance Polycarbonate Cabinets

Superior performance and security in most demanding environments. Easy to use. Quick to install. All this is driven by innovation and market driven product development.

ARCA is a non corrosive and cost effective alternative to sheet steel cabinets being installed in harsh and demanding environments. ARCA has all the features of steel but benefits of high grade thermoplastic.

The Fibox ARCA Cabinet is made from rugged polycarbonate which offers many benefits: non corrosive, high impact resistance, low maintenance, UV resistant, aesthetically pleasing.



ARCA Enclosures

Features



100 % corrosion-free

High impact resistance – Robust and rigid design - IK10

High ingress protection - Watertight – IP66

Electrically insulated – 1500 V DC

UV stabilized raw material – UL 508 (UL 746c)

Flammability rating according to UL 94-5VA

Easy to customize

Low maintenance

ARCA Enclosures

Technical Information

Property	Value
Material	Glass fiber reinforced polycarbonate
RAL Color	7035
Ingress Protection	IP66
Impact resistance	IK10 +35°C, IK8 -25°C
Temperature range, PUR Gasket	-40°C to +80°C
Electrical insulation	Totally insulated up to 1500VDC according to Low Voltage Directive 2006/95/EC
Flammability rating	UL 94-5VA, glow wire 960°C
UV resistance	UL 508
Non-toxicity	Halogen free, according to DIN/VDE 0472, Part 815
Standards	EN/IEC 62208 and EN/IEC 61439-1-4

ARCA Enclosures

Approvals and tests

EN/IEC

UL/ULc

GOST

UV

- 5000h accelerated test
- UV protective coating available for extra protection

Other certificates on request

ARCA Enclosures

Product Key ARCA



ARCA 203015 S

S Swinghandle
W Cover with window, 2 -point locking

203015	200x300x150 mm
302015	300x200x150 mm
304015	300x400x150 mm
304021	300x400x210 mm
403015	400x300x150 mm
403021	400x300x210 mm
405021	400x500x210 mm
406021	400x600x210 mm
504021	500x400x210 mm
507030	500x700x300 mm
604021	600x400x210 mm
608030	600x800x300 mm
705030	700x500x300 mm
806030	800x600x300 mm

Polycarbonate

ARCA Enclosures

Benefits

ARCA DIN RAIL FRAME SET

- Very easy and quick installation
- Easy and quick assembly of electrical components (6 minutes)
Can be done on work bench and then entire assembled frame can be easily mounted on cabinets just by four screws
- Corner brackets and front plates made of plastic (spec)
- Set: includes Din rails, front plate, corner brackets and screws
- DIN rail distance 150mm



INNER DOOR

- Very quick to install – No tools or screws required
- Hinged, lockable
- Made of painted aluminium and steel



FULL PACKED AND READY TO GO

- Maximum installation features
- Fastest on the market
- Light weight
- Easy to customize
- Control unit for heating



ARCA - MAKE DIFFICULT EASY

ARCA Enclosures

Product and features



Shaped gasketed rib

- Better waterproof
- Water not collected on the upper side of the gasket rib



Mounting Pods

- In the bottom and on all 4 sides for multiple purposes
 - 6 pods from 500x400 and up



Corner design

- Double corner to secure fixing without destroying the IP
- Robust and rigid cabinet

ARCA Enclosures

Product and features



Door

- Door opening angle 120°
- Both horizontal and vertical option
- Pre-formed mounting pods inside
- Easy access to the contents



2 Versions

- Grey and with glued Window
 - No transparent door
 - Same mould cannot produce both glass fiber filled PC and transparent (moulds for transparent need to be polished and glass fiber acts as sand paper for polished surface).
 - Glass fiber important for rigidity
 - Visual it will not look nice if you can see gasket, rib, locks etc. from the front

ARCA Enclosures

Product and features



Hinge

- Easy removable internal hinge
- Easy assembly and refined appearance



Gasket

- Wide and secured gasket with PUR material for high quality sealing



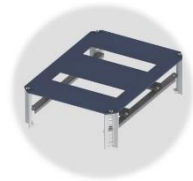
Special moulded rib design

- Reinforcement ribbing to make door rigid and more stable

ARCA Enclosures

Accessories available

Din rail frame set



- Very easy and quick installation
- Easy and quick assembly of electrical components - can be done on work bench and then entire assembled frame can be easily mounted on cabinets just by four screws
- Corner brackets and front plates made of plastic
- Set: includes Din rails, front plate, corner brackets and screws
- DIN rail distance 150mm

Inner door



- Very quick to install – No tools or screws required
- Hinged, lockable
- Made of painted aluminium and steel

Door guide



- Secure closing for mid and large size cabinets
- Included in the cabinet

Locking options

- DB3 standard
- Key, triangle, square, etc. as accessory



ARCA Enclosures

Accessories available



Wall mounting

- Two installation options:
 - Secure mounting from inside (stainless steel)
 - Quick installation from outside (plastic)
- Wall mounting brackets with two depths: 10mm and 50mm
 - Stainless Steel
 - Plastic



Pole mounting

- Accessory kit for mounting cabinets on poles: pole diameter 100-300mm

ARCA Enclosures

Accessories available



Flanges

- By machining cut out available 3020-8060 range of threaded, smooth and membrane flanges for managing cable entries



Mounting plates

- Galvanized steel
- Perforated galvanized steel (26x11mm)
- Multiperforated galvanized steel (Ø3,6mm)
- Resin bonded paper board



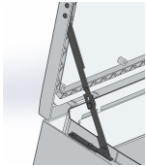
Adjustable mounting plate and corner adjustment set

- Easy to assemble the mounting plate to desired depth with corner brackets.



ARCA Enclosures

Extended accessory range



Door Stopper

- Left/Right/Small/Mid



Rain Canopy Set

- Or snow roof as we call it in the cold north



Coupling and connecting part Kit



PEN bar system

- Neutral and Earth bar with quick access up to 600x400 only

ARCA Enclosures

Applications

- Heavy industries
- Steel mills
- Petrochemical plants
- Temporary connections
- Public services
- Traffic signalling
- Telecom
- Water and Waste
- Control units
- Infra structure
- OEM panels
- DIN-rail enclosures
- Pump controls
- Marine applications
- Smart grid applications



ARCA Enclosures

Remember to use...

- The right cabinet to the right job
 - Environment
 - Application
 - Protection



ARCA Enclosures

Superior Performance

Why Polycarbonate?

The main body of the Fibox ARCA cabinet is made from rugged glass-fiber filled polycarbonate with many benefits:

- 100% Corrosion Free.
- Low maintenance.
- High impact resistance. Watertight even after major impacts.
- Easy to customize. Possible to have recess areas and threaded holes.
- UV resistant
- Aesthetically pleasing



ARCA Enclosures

Innovations – Make Difficult Easy

Technological Advantage

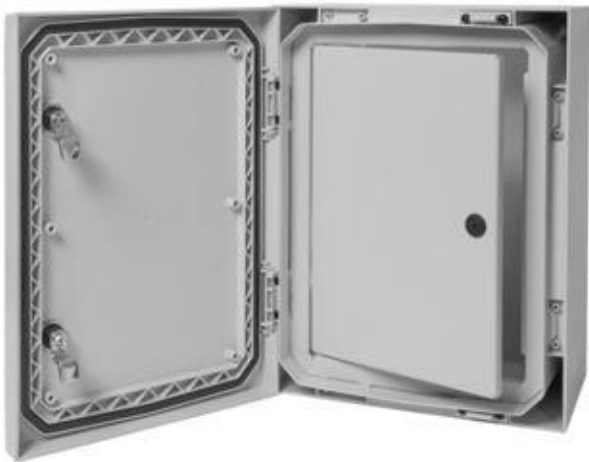
- Polycarbonate gives us an opportunity to “Make Difficult Easy” in a smart way not possible in steel world.
- Low maintenance

Innovations - Make Difficult Easy

- Patent - Easy-to-use DIN rail frame set design – quick to install - no special tools needed
- Patent - Lockable inner door – no tool required for installation

ARCA Enclosures

The Cabinet Platform for the future



ARCA Product platform enables the new feature's development through intelligent accessories.

Global market driven specified accessories available from the launch.

Future solutions development possible based on local markets customer needs.



ARCA Enclosures

Learn more:

- www.fibox.com
 - [ARCA products](#)
 - [ARCA accessories](#)
- Catalogues
 - [ARCA Cabinet ENG/DE](#)
 - [Fibox Enclosure and Cabinet Overview:](#)
 - [Enclosure catalogue 5.0](#)
- Video
 - [ARCA IEC](#)

X-ON Electronics

Largest Supplier of Electrical and Electronic Components

Click to view similar products for [Mounting Fixings](#) category:

Click to view products by [Fibox](#) manufacturer:

Other Similar products are found below :

[007310](#) [007541](#) [6-141-P](#) [620HA038NF09](#) [620HA038NF11](#) [M81714/60-12-01](#) [71-074914-006](#) [71-146610-6H](#) [712HA170B23128-N](#) [75-69116-8S](#) [75-69211-3P](#) [75-69214-6P](#) [75-69224-28P](#) [75-69224-5S](#) [770-006A109](#) [770-006A109R](#) [770-006A207](#) [770-006A208W1](#) [770-006A209](#) [770-006A306](#) [770-006A703W1](#) [770-006A704](#) [770-006A704W1](#) [770-006A705](#) [770-006A706](#) [770-006A706W1](#) [770-006A707](#) [770-006A709](#) [770-007A203](#) [770-007A203W1](#) [770-007A204W1](#) [770-007A207W1](#) [770-007A703](#) [770-007A704W1](#) [770-007A706](#) [770-007A707W1](#) [770-010Y208](#) [770-010Y308](#) [770-010Y705](#) [770-010Y706](#) [770-010Y707W1](#) [770-011T201](#) [770-011T203](#) [770-011T701W1](#) [770-011T702](#) [770-011T702W1](#) [770-011T703](#) [770-013311](#) [770-013312](#) [770-013709](#)