

1700 & 1750 Toggle Switches 16A 250Vac Single and Double Pole



- ▶ Nylon toggle switches
- ▶ Ratings up to 20A, 250V ac
- ▶ Single and double pole
- ▶ Wide choice of terminals
- ▶ Choice of circuit options including 3 position
- ▶ Flat & round actuator options

Approvals and specifications



16(4)A 250Vac T85



- UL 20A 250Vac Non Ind (Single pole)
- UL 16A 250Vac Non Ind (Double pole)
- UL CSA (2 pos types) 250Vac 1hp, 125Vac 1/2hp
- UL CSA (3 pos types) 250Vac 1/2hp, 125Vac 1/4hp
- CSA 16A 250Vac Non Ind
- UL 85°C, file E45221, CSA file LR10990
- UL and CSA N/A on momentary types

Selective "A, B, C" and "OFF, A, A+B" circuits at 5 amp also available.
3mm contact gap except where marked μ .
Technical data on pages 4 & 5.

toggle switches

C 1750 H O - - -

TERMINAL FUNCTION ACTUATOR BODY OPTIONS

TERMINAL	FUNCTION		ACTUATOR
C 6.3 x 0.8	Single pole 1700 ON - OFF	Double pole 1750 ON - OFF	H 16.4
H 4.8 x 0.8	1710 μ ON - ON	1760 μ ON - ON	R 13.8 The switch is on between centre terminals (2 & 5) and the terminals over which the lever is positioned.
K 2.8 x 0.8	1720 μ ON - OFF - ON	1770 μ ON - OFF - ON	
T Solder	1721 μ ON - OFF - ON (momentary 1 side)		
X PCB 0.8 Sq	1722 μ ON - OFF - ON (momentary 2 sides)		



C1700R --



C1700H --



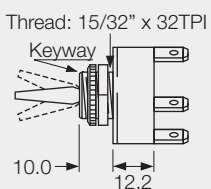
C1760R --



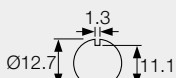
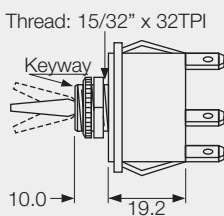
C1750H --

BODY

0
Single pole



0
Double pole



Panel hole (all types)
Panel thickness (Max)
Both nuts - 3.5mm
Less backnut - 6.5mm

OPTIONS

Neck Seal A0539MOAAA

Material - Nitrile
(H & R Actuators)
Actuator visible



Cover A1080MOAAA

Material - EPDM
(R Actuator only)



Cover A0331MOAAA

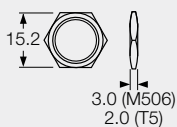
Material - PVC
(R Actuator only)



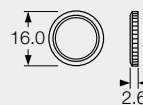
Covers have internal nylon nuts

Fixing nuts (Standard is M506 & T92)

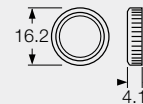
T5 Hex brass
M506 Hex nylon



T92 Knurled brass - slotted



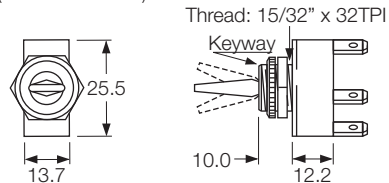
M279 Knurled nylon



DIMENSIONS (mm)

Single Pole

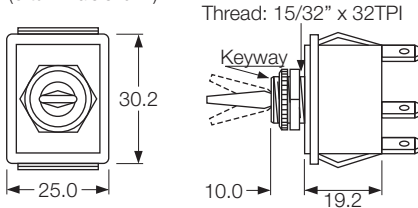
(C terminals shown)



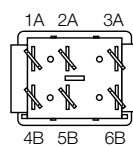
Optional
F00232PAAA
plate SP or DP

Double Pole

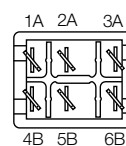
(C terminals shown)



Without barrier



With barrier



Optional terminal barrier M441.

X-ON Electronics

Largest Supplier of Electrical and Electronic Components

Click to view similar products for [Toggle Switches](#) category:

Click to view products by [Bulgin](#) manufacturer:

Other Similar products are found below :

[8A1-C-222](#) [60012L](#) [6006L](#) [6663](#) [7101MD9V30GE](#) [7101SPDV30BE](#) [7103SDV30BE](#) [7105D](#) [7108P3YAV2BE](#) [71YY50282](#)
[7201MD9AVBE](#) [7301K38](#) [7306K36](#) [7310K36](#) [7314K36](#) [7506K4](#) [7691K14](#) [7700K1](#) [8396K108](#) [8824K14](#) [8828K13](#) [G2VX](#) [G3VX](#) [PS83-](#)
[121G](#) [A101MD9AB04](#) [A101SD9AB04](#) [A101SDCQ04](#) [A103SD9AQ04](#) [A107TZB04](#) [A123P32YZQ](#) [A123S1YZG](#) [A127S1YCQ](#) [1-1825192-](#)
[0](#) [A131S1YZQ](#) [A201SCWZB04](#) [A207SYCB04](#) [A208J61ZQ0004](#) [A221K12KAG](#) [A221S1YZQ](#) [A221T1TCQ](#) [A232K12KZQ](#) [A232M1YCQ](#)
[A323S1CWZQ](#) [A423S1CWZG-M8](#) [A423S1YZQ](#) [12149A-3V](#) [12156AX408](#) [12147AGKX679](#) [12149AD2G0383VX408](#) [12246X778](#)