

Add industrial
connectivity to your
device

Want to add serial communications to
your device using the RS-485 protocol?
The Arduino MKR 485 shield will provide
the industrial connectivity you need.

[STORE . ARDUINO . CC / ARDUINO - MKR - 485 - SHIELD](https://store.arduino.cc/arduino-mkr-485-shield)



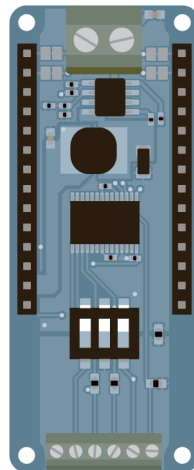


MKR 485 SHIELD

Thanks to this shield, you can now connect your MKR board to any of the industrial systems that using the RS 485 protocol. The MKR 485 shield is the ultimate expansion that allows MKR boards to connect to almost any legacy industrial system, such as industrial PLCs, controllers, drives and HMIs. Old industrial systems (e.g., machinery, heating systems, and conveyors) can be turned into IoT devices through a serial connection using the MKR 485.

GENERAL

Input Voltage	7V-16 V
Transceiver	TJA1049T/3
Interface	UART
Power Consumption	40 mA
Weight	12 g
Product Code	ASX00004



X-ON Electronics

Largest Supplier of Electrical and Electronic Components

Click to view similar products for [Interface Development Tools](#) category:

Click to view products by [Arduino](#) manufacturer:

Other Similar products are found below :

[DP130SSEVM](#) [ISO3086TEVM-436](#) [ADP5585CP-EVALZ](#) [CHA2066-99F](#) [AS8650-DB](#) [MLX80104 TESTINTERFACE](#) [I2C-CPEV/NOPB](#)
[ISO35TEVM-434](#) [416100120-3](#) [XR18910ILEVB](#) [XR21B1421IL28-0A-EVB](#) [EVAL-ADM2491EEBZ](#) [MAXREFDES23DB#](#)
[MAX9286COAXEVKIT#](#) [MAX3100EVKIT](#) [MAX13235EEVKIT](#) [XR21B1424IV64-0A-EVB](#) [CMOD232+](#) [MAX13042EEVKIT+](#)
[MAX14838EVKIT#](#) [MAXCAM705OV635AAA#](#) [MAX9205EVKIT](#) [DS100BR111AEVK/NOPB](#) [DC241C](#) [MAX9286RCARH3DB#](#)
[DC1794A](#) [SN65HVS885EVM](#) [EVB81112-A1](#) [DFR0257](#) [XR22404CG28EVB](#) [ZLR964122L](#) [ZLR88822L](#) [EVK-W262U-00](#) [DC196A-B](#)
[DC196A-A](#) [DC327A](#) [OM13585UL](#) [MAX16972AGEEVKIT#](#) [MARS1-DEMO3-ADAPTER-GEVB](#) [MAX7315EVKIT+](#) [PIM511](#) [PIM536](#)
[PIM517](#) [DEV-17512](#) [STR-FUSB3307MPX-PPS-GEVK](#) [MAXREFDES177#](#) [EVAL-ADM2567EEBZ](#) [EVAL-ADN4654EBZ](#)
[MAX2202XEVKIT#](#) [MAX13171EEVKIT+](#)